

32<sup>ND</sup>

INTERNATIONAL

POST-SECONDARY

DAIRY CATTLE JUDGING

CONTEST

SUNDAY, OCTOBER 2, 2022

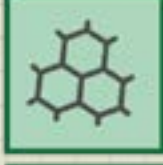
ENTRIES DUE: SEPTEMBER 9



55<sup>th</sup>

**WDE**

World Dairy Expo 2022  
10.2-10.7  
Madison, WI, USA



Listed below are the top individual and top team past winners of the International Post-Secondary Dairy Cattle Judging Contest.

## Traditional Contest

### Top Individual

---

1989 - Sue Northrup, SUNY Cobleskill	2006 - Amanda Durant, Morrisville State College	2018 - Lydia Williams, SUNY Cobleskill
1990 - Greg Silva, Modesto Junior College	2007 - Caitlyn Morehart, Modesto Junior College	2019 - Cassi Menendez, SUNY Cobleskill
1991 - Allen Van Gorder, Morrisville State College	2008 - Christopher Curtiss, SUNY Cobleskill #2,	2020 - No Show
1992 - Rebecca Dumont, SUNY Cobleskill	2009 - Matt Henkes, Northeast Iowa Community	2021 - Erin Curtis, SUNY Cobleskill
1993 - Derek Wolf, Morrisville State College	College	
1994 - Ted Dechow, Morrisville State College	2010 - Thomas McCarthy, Morrisville State College	
1995 - Mike Lortie, Michigan State University	2011 - Rocco Cunningham, Modesto Junior College	
1996 - Daniel Martin, College of Sequoias	2012 - Austen Schmidt, UW-Madison Farm &	
1997 - Tara Taylor, Morrisville State College	Industry Short Course	
1998 - Jana McClelland, Santa Rosa Junior College	2013 - Jessica Telgmann, Kaskaskia College	
1999 - Rudi DeWinkle, Modesto Junior College	2014 - Evan Castrogiovanni, Morrisville State	
2000 - Kristi Grindly, Highland Community College	College, New York	
2001 - Darrin Hill, Morrisville State College	2015 - Tanner Topp, Ohio State University Ag Tech	
2002 - Joseph Silva, Modesto Junior College	Institute	
2003 - Sarah Van Exel, Modesto Junior College	2016 - Rachel Ekkel, Michigan State University Ag	
2004 - Cole Bettencourt, Modesto Junior College	Tech	
2005 - Chris Smithgall, Morrisville State College	2017 - Kennedy Crothers, SUNY Cobleskill	

### Top Team

---

1989 - Modesto Junior College, California	2006 - Kaskaskia College, Illinois
1990 - Ohio State University Ag Tech Institute, Ohio	2007 - Modesto Junior College, California
1991 - Morrisville State College, New York	2008 - SUNY Cobleskill #2, New York
1992 - Morrisville State College, New York	2009 - Ohio State University Ag Tech Institute, Ohio
1993 - Modesto Junior College, California	2010 - SUNY Cobleskill #1, New York
1994 - Morrisville State College, New York	2011 - Modesto Junior College, California
1995 - Modesto Junior College, California	2012 - SUNY Cobleskill, New York
1996 - Morrisville State College, New York	2013 - Kaskaskia College, Illinois
1997 - Morrisville State College, New York	2014 - Morrisville State College "A", New York
1998 - Santa Rosa Junior College, California	2015 - Ohio State University Ag Tech, Ohio
1999 - Modesto Junior College, California	2016 - Northeast Iowa Community College, Iowa
2000 - Modesto Junior College, California	2017 - SUNY Cobleskill, New York
2001 - Morrisville State College, New York	2018 - SUNY Cobleskill, New York
2002 - Morrisville State College, New York	2019 - SUNY Cobleskill, New York
2003 - Modesto Junior College, California	2020 - No Show
2004 - Modesto Junior College, California	2021 - Kaskaskia, Illinois
2005 - Northeast Iowa Community College, Iowa	

## Practical Contest

### Top Team

---

1996 - Ohio State University Ag Tech Institute	2008 - SUNY - Cobleskill #1	2020 - No Show
1997 - Morrisville State College	2009 - SUNY - Cobleskill #2	2021 - Kaskaskia College
1998 - Michigan State University	2010 - Northeast Iowa Community College	
1999 - University of Minnesota - Crookston	2011 - Lakeshore Technical College #1	
2000 - Modesto Junior College	2012 - Northeast Iowa Community College	
2001 - Michigan State University	2013 - Modesto Junior College	
2002 - UW-Madison Farm & Industry Short Course	2014 - University of Wisconsin - Platteville	
2003 - Alfred State College	2015 - Lakeshore Technical College #1	
2004 - Michigan State University	2016 - Northeast Iowa Community College	
2005 - University of Guelph	2017 - Northeast Iowa Community College	
2006 - Ohio State University Ag Tech Institute	2018 - Kaskaskia College	
2007 - Ohio State University Ag Tech Institute	2019 - Northeast Iowa Community College	

**Superintendent..... Jerome Meyer, Zoetis, Sun Prairie, WI**

**Assistant Superintendent ..... Maureen DeBruin, Holstein Association USA, Inc., Jefferson, WI**

#### - Assistant Superintendents -

Dave Badula, Cassville, WI; Cindy Cooper, Sun Prairie, WI; Jake Cramer, Beaver Dam, WI;  
Cheryl Ehrke, Fort Atkinson, WI; Cierra Ehrke Essock, Fort Atkinson, WI; Kristen Klossner, New Glarus, WI; Erin Leach, Tillamook, OR;  
Mark & Morgan Lundy, Fort Atkinson, WI; Ron Martin, Fort Atkinson, WI; Chrissy Meyer, Sun Prairie, WI; and Brenda Murphy, Poynette, WI.

# - INTERNATIONAL POST-SECONDARY DAIRY CATTLE JUDGING CONTEST -

## **\*\*NEW SCHEDULE\*\* - SCHEDULE OF EVENTS -**

<b>Saturday, October 1</b>	<b>2:30 p.m.</b>	<b>Registration for Practical Contest</b> - East Lobby of the Coliseum
	<b>3:00 p.m.</b>	<b>Practical Contest begins with linear demonstration and contest</b>
	<b>3:45 p.m.</b>	<b>Commercial and Registered Heifer Evaluation</b> - Coliseum
	<b>4:30 p.m.</b>	<b>Mating Class</b> - Coliseum
	<b>5:00 p.m.</b>	<b>Practical Contest &amp; Reasons</b> - Coliseum <b>After Reasons - Buffet Dinner</b> - Clarion Hotel
<b>Sunday, October 2</b>	<b>6:30 a.m.</b>	<b>Breakfast</b> - Mendota 3-4, Exhibition Hall, Expo grounds Five complimentary breakfast tickets per team are included with your registration fee. Additional tickets may be purchased at entry.
	<b>7:30 a.m.</b>	<b>Contestants assemble in the Coliseum</b> - East side of the Coliseum
	<b>8 a.m.</b>	<b>Traditional Judging Contest begins</b>
	<b>11:15 a.m.</b>	<b>Contestants Luncheon, followed by Contestant Oral Reasons</b> - Mendota 3-4, Lake Rooms
	<b>3 p.m.</b>	<b>Coaches Meeting</b> - Mendota 3, Exhibition Hall
	<b>5:30 p.m.</b>	<b>Joint 4-H, Intercollegiate &amp; Post-Secondary Banquet Reception</b> - The Tanbark, Expo grounds Agri-Graphics will be available for team photographs during the Banquet Reception.
	<b>6:30 p.m.</b>	<b>Joint 4-H, Intercollegiate &amp; Post-Secondary Awards Banquet</b> - The Tanbark, Expo grounds Five complimentary tickets per team

**\*\*Business attire is appropriate for the reception & awards banquet.\*\***

**REGISTER ONLINE AT:**  
[www.worlddairyexpo.com/pages/Online-Contest-Registration.php](http://www.worlddairyexpo.com/pages/Online-Contest-Registration.php)

## **- REGISTRATION DEADLINE & FEES -**

The contest is divided into a Practical Contest and Traditional Judging Contest. The Traditional Contest entry fee is \$100 per team or \$25 per individual. The Practical Contest entry fee is \$100 per team or \$25 per individual. Entry deadline is September 9. Teams may enter the Practical and/or Traditional Contests via the website for a late fee of \$125 September 10 - 16.

**If not also registered in the Traditional Contest**, participation in the Practical Contest includes an awards banquet ticket. Separate awards will be given in each contest. When entering the Practical Contest, please indicate if your team will be attending the complimentary light meal following the conclusion of the Practical Contest on Saturday evening.

One Coaches Meeting ticket is complimentary. Additional Coaches Meeting tickets are available for \$25. Five tickets will be provided for the breakfast the morning of the contest. Additional tickets are \$15 per person. Five complimentary Awards Banquet tickets are also provided per team. Additional tickets for the banquet will be \$28 per person.

World Dairy Expo does not charge admission or parking fees the day of the contest. However, admission will be charged starting Tuesday, September 28. Additional entry tickets are available at a reduced rate of \$10 per person per day until September 10. After that time, the full price of \$12 per person per day is required to enter the grounds. A season event pass is available for \$35. **\*\*NEW THIS YEAR\*\*** A link to purchase discounted admission tickets will be included in your confirmation email after registering your team. *Admission tickets must be purchased via this link and not at the time of team registration.*

World Dairy Expo requires all contestants, coaches and leaders to abide by all rules and regulations set forth for its Post-Secondary Contest. By submitting registration payment, you agree that you, and the persons you represent herewith, will abide by each of the rules stipulated within the contest rules and regulations. Contestants will be held responsible for their actions. The use of outside aide is forbidden and includes, but not limited to, the use of electronic communications, internet sources, phone calls or other communication tools. Contestants, coaches and leaders are not permitted in or near the dairy cattle barns on the grounds prior to the contest except as announced by the Superintendent.

## **- TEAM AND ENTRIES -**

The teams shall consist of three/four members representing the agricultural college, technical college, short course or farm training program in which they are regularly enrolled. In each breed, the top three team members' scores will be used in determining awards. Also, overall awards will be based on the top three team members' scores. A school may enter different team members for the Practical and Traditional Contest.

## **- CONTESTANTS AND ELIGIBILITY -**

Eligibility is limited to students enrolled in current year post-secondary institutions not accredited by ADSA. Included are students in farm training classes, short courses, junior colleges, two-year technical colleges and four-year non-Land Grant colleges. Non-U.S. teams are encouraged to participate. Each school is limited to entering two teams. Practical contest is open to Intercollegiate contestants.

A contestant is **ineligible** if the contestant has ever done any of the following: (1) competed in the World Dairy Expo International Post-Secondary Dairy Cattle Judging Contest, (2) competed in the National Intercollegiate Dairy Cattle Judging Contest, (3) been official judge of dairy cattle at a fair

or show, (4) taught dairy judging in college or secondary school, or (5) been an employee or paid consultant of a breed organization, breeding service or similar unit, for which his/her duties include evaluation of dairy cattle for type (excluding internships).

Participation in this contest will in no way affect a contestant's eligibility in so far as future participation in the National Intercollegiate Dairy Cattle Judging Contest should the contestant later transfer to a four-year agricultural college. A contestant may participate in the Post-Secondary Contest practical contest one year and retain eligibility for the traditional contest another year. The reverse is also true. Practical contest eligibility includes students from ADSA approved schools.

If the eligibility of any contestant is protested, such protest must be made in writing and presented to the contest Superintendent(s) at the day of the contest before the contest begins. The protest must be accompanied by a check for \$25, which will be returned if the protest is sustained. In case the protest is not sustained, the \$25 shall be forfeited. Substitutions may be made during contest registration. Additional students may be entered as individuals.

### - ARRIVAL -

Contestants must not arrive on Expo grounds prior to the start of the offered team breakfast at 6:30 a.m. Sunday (with one noted exception below). If not partaking in the offered team breakfast, once on grounds, please proceed directly to the Coliseum.

Please note, if a contestant is participating in the Post-Secondary Practical contest on Saturday afternoon they may be on the grounds for that contest but must go directly to the Coliseum. After the contest, contestants must exit the grounds. Additionally, any student that participates in the Post-Secondary Practical contest will remain eligible for the Intercollegiate Contest at World Dairy Expo.

### - SUPERINTENDENT -

The superintendent(s) shall have complete charge of the contest. The superintendent(s) shall see that all rules and regulations governing the contest are duly carried out and that the contest is conducted with fairness and justice to all concerned. The superintendent(s) shall also decide all questions which may arise in connection with the interpretation of the rules.

### - JUDGING SYSTEM -

A committee of judges shall place all classes and hear and grade reasons. If the number of teams entered indicates that additional associate judges are necessary to expedite and make more efficient the hearing and grading of reasons, the superintendent(s) shall have the authority to appoint such judges.

### - PRACTICAL CONTEST -

All contestants participating in the Practical Contest shall report to the Superintendent(s) at **2:30 p.m., Saturday, October 1**, where they will receive full instructions in regard to the routing and details of the contest. Opportunity will be given for participants to ask questions. Contest begins at **3:00 p.m.** There will be four parts to this contest. Each phase of the contest will be allocated 25 minutes.

1. The first part of the contest will be the Linear Contest. Although the contest has separate team and individual awards, team scores will be tabulated and included in the practical contest. The results and awards will be given at the time of the awards banquet. Each contestant will be given four animals to score for ten linear traits. The scores closest to the "official" scores will receive the highest ranking. High scores are those contestants that are (+/-) 5 points or less, while those lowest scores are (+/-) 10 points or more. The Linear Contest total is 200. Team scores will be calculated the same as the traditional contest.
2. The second part of the contest will consist of up to six non-ID animals. A situation scenario will be provided prior to the contest describing conditions under which animals are going into. Contestants will judge as a team with no individual scores but all members of a team, must participate. Each team will act as a buying group. Placings will be made using the enclosed score card for non-ID heifers. They will be asked a number of questions (not yes or no types). Questions will not have equal values and points may be given for certain incorrect answers much as breaks are assigned in traditional judging classes. Contestants should be prepared to answer questions concerning heifer weights, heifer values, heifer body conditions and to identify discriminating factors to be evaluated on the heifer scoreboard. Detailed questions on heifer rearing will be asked. Each team may receive a maximum of 50 points for correct placings and answers to the provided questions. This will NOT be a reasons class this year.
3. The third part of the practical contest will consist of six registered Holstein heifers with provided pedigrees. A situation scenario will be provided specifying conditions that the contestants (acting as buyers) are putting the animals in. Again contestants will judge as a team with no individual scores but all members of a team, must participate. Animals will be placed 1-6 using the enclosed score card for Registered Heifers. Contestants will also answer questions about the animals in the class. Again, yes or no questions will be avoided and questions will be scored in the same manner as the non-ID heifer class. Each team may receive a maximum of 100 points for correct placings and each team may receive a maximum of 50 points for the question portion, and 50 points for the team reason portion. Teams should be aware that situation scenarios may change dramatically from year to year.  
Practical Reasons: Each team will be required to give a set of reasons to justify their placings on the registered heifer class. The reasons will be no longer than 5 minutes and will be given to a two judge panel. Each team will have 20 minutes to prepare for their reasons. Each team member must participate in the reasons discussion for maximum score. The reasons should have an opening statement, both genetic & phenotypic animal comparisons, and a closing statement. Reasons will have a maximum 50 points.
4. The final part of the contest will consist of team members being presented either a cow or a heifer and require them to mate the animal. This is a team event and will be at the conclusion of the Registered Heifer segment. Each team will be provided with a scenario to mate the provided female and have to choose from a list of five provided sires. The teams will have a full pedigree on the female and also a full PTA and pedigree description of each bull. Teams will answer five written questions and be required to pick the best choice to mate the heifer/cow. Also, as a team they will give reasons to justify their mating of the animal to the sire of their choice. These reasons should relate to the scenario that was provided and include both phenotypic and genotypic explanations. Reasons will be a maximum of two minutes in length and at least two team members must present. All team members must be prepared to answer questions after their reasons. Each team may receive a maximum of 100 points. 50 points for correct answers to the provided questions and 50 points for team reasons.

## - DAIRY HEIFER ECONOMIC SCORE CARD -

MAJOR TRAIT DESCRIPTION	NON-ID	REG.
<b>1. PRODUCTION PERFORMANCE . . . . .</b>	<b>30%</b>	<b>50%</b>
<b>A. Genomic values, genetic indexes for Net Merit, Protein, Milk, Fat, PL, and SCS are all considered. The higher these genetic values, the more desirable the ranking.</b>	15%	27%
<b>B. Predicted Producing Abilities or Herdmate Deviations for milk, protein and fat. These reflect production relative to management in the herd. The higher the better.</b>	10%	15%
<b>C. The actual production records with emphasis on total production per Day of life. Emphasis is put on milk, protein, and fat.</b>	5%	5%
<b>D. Strength of pedigree for production and type for generations.</b>	0%	3%
 <b>2. CONFORMATION. . . . .</b>	 <b>55%</b>	 <b>35%</b>
<b>A. FORM</b>	22%	14%
<i>Attractive individuality and harmonious blending of parts with the exception of feet and legs, is evaluated. Listed in priority order; the descriptions of the traits to be considered are as follows:</i>		
<b>Rump – long and wide throughout with pin bones slightly lower than hip bones.</b>		
<b>Thurls - wide apart and centrally placed between hip bones and pin bones.</b>		
<b>Tailhead - set slightly above and neatly between pin bones. Tail free from coarseness. The vulva is nearly vertical.</b>		
<b>Back – Straight and strong; loin broad, strong and nearly level; slight arch preferred.</b>		
<b>Front End – adequate constitution with front legs straight, wide apart and squarely placed. Shoulder blades and elbows set firmly against the chest wall. The crops should have adequate fullness.</b>		
<b>Barrel – long, deep and wide; depth and spring of rib increasing toward the rear with a deep flank.</b>		
<b>Chest – deep and wide floor with well sprung fore ribs blending into the shoulders.</b>		
<b>Breed Characteristics – exhibits overall style and balance; clean cut head, broad muzzle with large, open nostrils, and strong jaw.</b>		
<b>B. FEET AND LEGS</b>	11%	7%
<i>Feet and rear legs are evaluated. Evidence of mobility is given major consideration. Listed in priority order; the descriptions of the traits to be considered are as follows:</i>		
<b>Feet – Steep angle and deep heel with short, well-rounded, closed toes.</b>		
<b>Rear Legs-</b>		
• <b>Rear View – straight, wide part with feet squarely placed.</b>		
• <b>Side View – moderate set (angle) to the hock.</b>		
• <b>Hocks – cleanly molded, free from coarseness and puffiness with adequate flexibility.</b>		
• <b>Bone – flat, clean with adequate substance.</b>		
• <b>Pasterns – short, strong with some flexibility.</b>		
<i>Slightly more emphasis is placed on Feet than on Rear legs when evaluating this breakdown.</i>		
<b>C. DAIRY CHARACTER</b>	11%	7%
<i>Evidence of potential milking ability is evaluated. Major consideration should be given to general openness and angularity with out weakness, flatness of bone, and freedom from coarseness. Listed in priority order, The descriptions of the traits to be considered are as follows:</i>		
<b>Ribs – Wide apart. Rib bones wide, flat, deep and slated toward the rear.</b>		
<b>Thighs – Lean, incurving to flat and wide apart from the rear.</b>		
<b>Withers – Sharp with chine prominent.</b>		
<b>Neck – Long, lean and blending smoothly into the shoulders; clean cut throat, dewlap, and brisket.</b>		
<b>Skin – Thin, loose and pliable.</b>		
<i>Allowance should be given for winter and fall yearlings to carry more condition as they approach calving.</i>		



**D. STATURE** 11% 7%

*Growth, vigor, early maturity and good health are evaluated. Major consideration should be given to height at the point of wither. The description of the trait to be considered is as follows:*

**Stature – Height including length in the leg bones with a long bone pattern throughout the body structure; height at withers and hips should be relatively proportionate.**

- |   |            |            |
|---|------------|------------|
| <b>3. MANAGEMENT TRAITS . . . . .</b>   | <b>15%</b> | <b>15%</b> |
| <b>A. Age is a consideration. Generally older heifers are more economical than younger heifers. Younger cows are more economical than older cows.</b>   | <b>3%</b>  | <b>3%</b>  |
| <b>B. Reproductive status is considered. Generally pregnant animals have more economic value. Calving interval can also be utilized to look at the history of reproduction. Animals not pregnant for a long time can receive severe discrimination.</b> | <b>5%</b>  | <b>5%</b>  |
| <b>C. Temperament or other observed traits can affect the ranking</b>   | <b>1%</b>  | <b>1%</b>  |
| <b>D. Health history and/or vaccination are considered. If animals have severe problems or are known to carry disease severe discrimination should be given.</b>  | <b>6%</b>  | <b>6%</b>  |

**- PRACTICAL CONTEST DETERMINATION OF RATINGS -**

Maximum team score is 600. For the linear contest, the average of the top three individuals will be compiled for a team score. This will be added to the totals for each of the three heifer classes for a total overall team score for this contest. In case of a tie, the team placing highest on the combined total of the heifer classes will be the winner. If the teams are still tied, the team with the highest score in the linear contest will be the winner. If there is still a tie, it will be left a tie.

**-TRADITIONAL CONTEST -**

**Twelve Classes** of four individuals each shall be judged. These classes of heifers and cows shall be selected from the Ayrshire, Brown Swiss, Guernsey, Holstein, Jersey, Milking Shorthorn and Red & White. The animals shall be handled in a careful manner so that all contestants may have an equal opportunity to examine them. The animals shall be lined up consecutively in single file and numbered 1 to 4 inclusively.

**- METHOD OF CONDUCT -**

No member of any team, nor their coach, shall be allowed in the cattle barns, nor have the privilege of inspecting cattle selected for the contest at World Dairy Expo prior to the contest. No coach will be allowed on the floor of the Coliseum during the contest or while reasons are being given. Violation may result in team disqualification. Contestants are not permitted to talk to one another during the entire contest, including reasons. Doing so will result in disqualification.

**Inspection of Cattle** - Team members shall be divided into sufficient number of groups to provide the best opportunity to view and judge the animals; one assistant Superintendent shall have charge of each group. Contestants shall not at any time place their hands on any animal.

**Reasons** - Contestants shall give oral reasons, two minutes in length, for **five** classes in the traditional contest. The Superintendent shall notify the Contestants before the contest starts, the classes for which reasons will be required in order that contestants may take notes. Reasons will be given on the afternoon of the day of the contest. Contestants are allotted 15 minutes between the completion of the contest and the first set of reasons. Contestants will have at least 15 minutes in-between each set of reasons.

**Materials** - The superintendent shall provide ringside iPads for recording placings, and any other necessary materials for conducting the contest. No contestant shall be allowed to take any book, notes or writing paper into the ring except materials as are furnished by the superintendent(s).

**Time Allowed** - Contestants will be allowed 15 minutes to place non-reasons classes. A total of 18 minutes will be given on oral reason classes. Contestants will be notified three minutes prior to the end of each class.

Contestants will utilize ringside iPads to submit each class placing. These iPads will replace the traditional paper cards submitted at the conclusion of each class. Contestants will have a unique barcode attached to their contestant number. When the contestant has completed judging a class, he/she will scan the barcode at an iPad and will then select the breed, class and input his/her placing. Each contestant will have a back-up paper he/she will use to record his/her placings and submit at the conclusion of the contest.

**- TRADITIONAL CONTEST DETERMINATION OF RATINGS -**

Ratings shall be based upon a possible score of 50 points for each class placed and 50 points for each set of reasons. Since there are 12 classes to be placed and five sets of reasons given, there will be a possible total score of 850 points per contestant.

The final rank of each contestant in each breed shall be determined by totaling his/her scores on placings and reasons for that breed. The individual rank for all breeds shall be determined by adding his/her scores for each of the breeds.

The team rankings for each breed shall be determined by totaling the scores on placings and reasons for each of the three highest scoring team members of that breed. In like manner, the team ranking for all breeds shall be determined by combining the scores of the three highest scoring members of each of the breeds in the contest.

Contest ties will be broken as follows:

1. Team breed ties will be broken on:
  - A. Higher team, same breed, reasons score
  - B. Higher team, overall reasons score
  - C. Higher team, overall score
  - D. Lower team, total placings score in reasons classes
  - E. Team with the most perfect placing scores
  - F. Coin flip
2. Individual breed ties will be broken on:
  - A. Higher individual, same breed reasons score
  - B. Higher individual, overall reasons scores
  - C. Higher individual, overall score
  - D. Lower individual, total placings score in reasons classes
  - E. Individual with the most perfect placing scores
  - F. Coin flip
3. Individual overall placing-only ties will be broken on:
  - A. Higher individual, total reasons score
  - B. Individual with the more perfect placing scores
  - D. Coin flip
4. Individual overall reasons ties will be broken on:
  - A. Higher individual, overall score
  - B. Highest single breed reasons score, any breed
  - C. Lower individual, total placings score in reasons classes
  - D. Individual with the most perfect placings scores
  - E. Coin Flip
5. Team overall reasons ties will be broken on;
  - A. Higher team, overall score
  - B. Lower team, total placings score in reasons classes
  - C. Team with the most perfect placing scores
  - D. Coin flip
6. Individual overall ties will be broken on:
  - A. Higher individual, total reasons score
  - B. Lower individual, total placing score in reasons classes
  - C. individual with the most perfect placing scores
  - D. Coin flip
7. Team overall ties will be broken on:
  - A. Higher team, total reasons score
  - B. Lower Team, total placing score in reasons classes
  - C. Team with most perfect placings score
  - D. Coin Flip

### - PRE-CONTEST PRACTICE SESSIONS AND TOURS -

Information regarding pre-contest practice sessions and tours will be sent with entry confirmation. The sessions will take place on Friday, September 30. Lunch will be provided by *Hoard's Dairyman*, Fort Atkinson, WI. **Meal reservations are required. Please complete the reservation line on the entry form.** Please take time to send thank you's to the tour hosts. Without their cooperation these tours would not be available.

### - BIO-SECURITY -

1. **All contest members are required to bring enough plastic boots for each farm.**
2. Avoid farms, sale barns, stockyards, animal laboratories, packinghouses, zoos, fairs or other animal facilities for five days prior to leaving a foreign country.
3. Avoid contact with livestock or wildlife for five days after arrival in the United States from international travel.
4. Any individual who has been on a farm or in contact with an animal infected with foot and mouth disease should have no contact with wild or domestic animals for ten days before visiting the practice team herd facilities. Individuals must then thoroughly shower, shampoo, and change into new clothing before attending the practice sessions.

### - LODGING -

To make your trip to Madison easier, World Dairy Expo has a block of rooms reserved at the AmericInn Madison South for youth judging team participants, coaches and parents. Rooms are just \$189 per night for double queen rooms. Please **call the AmericInn directly** at 608-222-8601 by **September 1**. Specify you are with the WDE Youth Contest Group.

If you wish to reserve different lodging accommodations for the national contest events, please refer to the Attendee Information and Hotel Information portion of the World Dairy Expo website, for updated lodging information.



## - PLEASE THANK THESE SPONSORS -

### Platinum Level Sponsor

Channel Seed  
Timothy Hoyt - 113 Shawn Dr, Arlington, WI 53911

### Gold Level Sponsor

STgenetics  
Amber Dammen - 8137 Forsythia St., Suite 100, Middleton, WI 53562

### Silver Level Sponsor

Bio-Vet, Inc.  
Julie Dochnahi - 300 Ernie Drive, Barneveld, WI 53507

## - TRADITIONAL CONTEST -

### Top Team Overall

Award  
Ron and Sandy Curran - Ultra Scan, 737 Miami Pass,  
Madison, WI 53711

### Awards

The Hartford Livestock Department  
Jay Huntwork - 11602 West Center Road, Suite 350, Omaha, NE 68144

### 2nd Place Team Overall

Pen Sets  
E-Zee Milking Equipment, LLC  
Suzanne Hann - 4904 Triangle Street, Suite A, McFarland, WI 53558

### Top 5 Teams Overall

Neck Ribbons & Medallions  
Ag-Bag by RCI  
Taylor Weisensel - 208 River Knoll Drive, Mayville, WI 53050

### Top 5 Teams Overall

Picture Plaques  
FarmFirst Dairy Cooperative  
Julie Sweney - 4001 Nakoosa Trail, Suite 100, Madison, WI 53714

### Top 5 Teams in Each Breed

Ribbons  
Ag-Bag by RCI  
Taylor Weisensel - 208 River Knoll Drive, Mayville, WI 53050

### Top Team & Individual - In Each Breed

Ayrshire Breeders Association  
Becky Payne - 1224 Alton Darby Creek Road, Suite B,  
Columbus, OH 43228

### Brown Swiss Cattle Breeders' Association

Norm Magnussen - 800 Pleasant St., Beloit, WI 53511-5456

### American Guernsey Youth Fund

Robin Alden - 1224 Alton Darby Creek Road, Suite G,  
Columbus, OH 43228

### Holstein Association USA, Inc.

Emily Annexstad - 1 Holstein Place, PO Box 808, Brattleboro, VT 05302

### American Jersey Cattle Association

Kimberly Billman - 6486 E. Main St., Reynoldsburg, OH 43068-2362

### The American Milking Shorthorn Society

Marcia Clark - 800 Pleasant Street, Beloit, WI 53511

### Red & White Dairy Cattle Association

Carley Krull - PO Box 579, Watertown, WI 53094

### Top 10 Individuals – In Each Breed

Ribbons  
FarmFirst Dairy Cooperative  
Julie Sweney - 4001 Nakoosa Trail, Suite 100, Madison, WI 53714

### 2nd Place Individuals – In Each Breed

Award  
Hoard's Dairyman  
Corey Geiger - 28 Milwaukee Ave W, PO Box 801,  
Fort Atkinson, WI 53538

### Top Individual Overall

(\$100 Cash + Award)  
Accelerated Genetics  
Terri Smith - 11740 US 42 North, Plain City, OH 43064

### Top 5 Individuals Overall

Cash Awards  
National Dairy Shrine  
Mike Opperman - PO Box 68, Fort Atkinson, WI 53538

### Top 10 Individuals - All American Awards

Neck Ribbons & Medallions  
Ag-Bag by RCI  
Taylor Weisensel - 208 River Knoll Drive, Mayville, WI 53050

### Top Individual Oral Reasons

Award  
The Hartford Livestock Department  
Jay Huntwork - 11602 West Center Road, Suite 350, Omaha, NE 68144

### Top 10 Individuals in Oral Reasons

Ribbons  
Dave Badula - 1524 Jack Oak Road, Cassville, WI 53806

### Top Team in Oral Reasons

Picture Plaques  
Ag-Bag by RCI  
Taylor Weisensel - 208 River Knoll Drive, Mayville, WI 53050

### Top 5 Teams in Oral Reasons

Ribbons  
FarmFirst Dairy Cooperative  
Julie Sweney - 4001 Nakoosa Trail, Suite 100, Madison, WI 53714

### Top Individual - Placings Only

Cash Award  
Dave Badula - 1524 Jack Oak Road, Cassville, WI 53806

### High Individuals – Placings Only 1st – 10th

Ribbons  
Maureen DeBruin - N5387 Popp Road, Jefferson, WI 53549





## - PLEASE THANK THESE SPONSORS -

### - PRACTICAL CONTEST -

#### High Team Awards

Plaques

Ag-Bag by RCI

*Taylor Weisensel - 208 River Knoll Drive, Mayville, WI 53050*

#### 2nd High Team

Cash Award

Feedworks USA, Ltd

*Malcolm Ballard - 6075 Miami Rd, Cincinnati, OH 45243*

#### 3rd High Team

Cash Award

Den-K Holsteins, Inc.

*Dennis & Kirsten Areias - 13315 S. Baker Road, Los Banos, CA 93635*

#### Top 3 Teams Overall

Rosettes

Feedworks USA, Ltd

*Malcolm Ballard - 6075 Miami Rd, Cincinnati, OH 45243*

### - LINEAR CONTEST -

#### Top Team

Awards

*Maureen DeBruin - N5387 Popp Road, Jefferson, WI 53549*

#### Top 3 Teams

Cash Award

Holstein Association USA, Inc.

*Emily Annexstad - 1 Holstein Place, PO Box 808, Brattleboro, VT 05302*

#### Top Individual

Award

The Hartford Livestock Department

*Jay Huntwork - 11602 West Center Road, Suite 350, Omaha, NE 68144*

#### Top 10 Individuals

Rosettes

### - REGISTERED HEIFERS -

#### Top Team

Awards

Ag-Bag by RCI

*Taylor Weisensel - 208 River Knoll Drive, Mayville, WI 53050*

### - COMMERCIAL COWS -

#### Top Team

Awards

Feedworks USA, Ltd.

*Malcolm Ballard - 6075 Miami Rd, Cincinnati, OH 45243*

Cash Award

*In memory of Jim Armbruster by Maureen DeBruin*

*N5387 Popp Road, Jefferson, WI 53549*

### - MATING CONTEST -

#### Top Team

Awards

Ag-Bag by RCI

*Taylor Weisensel - 208 River Knoll Drive, Mayville, WI 53050*

#### Cattle Leadspeople Sponsors

Select Sires, Inc.

STgenetics

University of Wisconsin - Madison Badger Dairy Club

Vita Plus Corporation

#### All Contest Participants

Team Lunch

*Saloah Hageman - 16 Elm Acres Dr, Fond du Lac, WI 54935*

World Dairy Expo Souvenir Pin

World Dairy Expo

*Laura Herschleb - 3310 Latham Drive, Madison, WI 53713*

Clipboards

International Protein Sires

*Ron Sersland - PO Box 157, Rock Springs, WI 53961*

Contestant Barcode/Souvenir Tags

Datamars, Inc.

*Trisha Klement - 1110 Industrial Blvd, Temple, TX 76504*

Pencils

Trans Ova Genetics

*Emily Warnimont - 2938 380th Street, Sioux Center, IA 51250*

Pre-Contest Practice Tour Lunch

Hoard's Dairyman

*Corey Geiger - 28 Milwaukee Ave W. - PO Box 801,  
Ft Atkinson, WI 53538*

