

HOLSTEIN CATTLE LOG

2-6
OCT.

THE NEXT FRONTIER

52ND
ANNUAL

★ 2018 ★
WORLD
DAIRY
EXPO
WORLDDAIRYEXPO.COM



ALLIANT ENERGY CENTER  MADISON, WI, USA



OPEN YOUR CUTTING WINDOW. AND YOUR LIFE.

HarvXtra® with Roundup Ready® Technology gives you the flexibility to manage your operation your way, and maybe even give yourself the day off.

See your alfalfa seed supplier booth for a chance to win a vacation of your choice.

HARVXTRA.
with Roundup
Ready® Technology

© 2018 Forage Genetics International, LLC. HarvXtra® is a trademark of Forage Genetics International, LLC. Roundup Ready® is a trademark of Monsanto Technology LLC, used under license by Forage Genetics International, LLC.

HarvXtra® Alfalfa with Roundup Ready® Technology is subject to planting and use restrictions. Visit www.ForageGenetics.com/legal for the full legal, stewardship and trademark statements for these products.





International Holstein Show

Noon Friday, October 5 (Heifers)

8 a.m. Saturday, October 6 (Cows and Groups)

Dairy Cattle Exhibitor Committee

Chair

Tom Morris, Amery, WI

Vice-Chair

Bryan Voegeli, Monticello, WI

Overall Dairy Cattle Show Superintendent

Dave Bollig, Belleville, WI

Ethics Coordinator

David Jeans, DVM, Evansville, WI

Katie Agnew, Oconomowoc, WI

Angela Brown, Dodgeville, WI

Justin Burdette, Mercersburg, PA

John Dalton, Hartland, WI

Dean Dohle, Halfway, MO

Bruce Gingerich, Millersburg, IN

Gene Hall, Jr., Cushing, OK

Lynn Harbaugh, Marion, WI

Julie Hemp, Beaverville, IL

Jennifer Hill, Thurmont, MD

Ysabel Jacobs, Cap-Sante, QC

Jason James, Mineral Point, WI

Randy Knapp, Epworth, IA

Deb Lakey, Trempealeau, WI

Billy Lattire, Lawrenceburg, IN

Sheila McGuirk, DVM, Madison, WI

Donna Mertz, DVM, Blair, NE

Roger Owens, Frederic, WI

Terri Packard, Boonsboro, MD

Christy Ratliff, Garnett, KS

Mark Rueth, Oxford, WI

Chad Ryan, Fond du Lac, WI

Boyd Schaufelberger, Greenville, IL

Rick "RT" Thompson, Darlington, WI

Phillip Topp, Botkins, OH

Bonnie Van Dyk, New Richmond, WI

Clark Vilter, Hartland, WI

World Dairy Expo's Board of Directors

President

**Alan Deming, President, East Central/Select Sires

1st Vice-President

**Bill Hageman, Jr., At-Large Director

2nd Vice-President

**Debbie Crave, At-Large Director

Secretary/Treasurer

**Michael Hellenbrand, Purebred Breeders of World Dairy Expo

Bill Barlass, Purebred Breeders of World Dairy Expo

Cliff Becker, Farm Journal Media

Dan Belk, Foremost Farms USA

Steve Blessing, Purebred Breeders of World Dairy Expo

**Dave Bollig, Overall Dairy Cattle Show Superintendent

Paula Bovre, Wisconsin Holstein Association

David Cooper, National Milk Producers Federation

Jim Crowley, Jr., Director Emeritus

Jason Danhof, Purebred Breeders of World Dairy Expo

Glen Easter, Dairy Farmers of America

Troy Esser, BouMatic

Randy Geiger, Lakeshore Federated Dairy Cooperative

Tim Griswold, Dane County Holstein Breeders

**Bob Hagenow, At-Large Director

**Dean Hermsdorf, ABS Global, WDE Commercial Exhibitor
Committee Chair

Kevin Jorgensen, Select Sires, Inc.

Ernie Kueffner, At-Large Director

Ray Kuehl, Director Emeritus

Dave Kyle, Foremost Farms USA

Steve Larson, At-Large Director

Joan Lau, At-Large Director

Julie Luedkte, Cooperative Resources International

Chuck Miller, Nasco

**Tom Morris, WDE Dairy Cattle Exhibitor Committee Chair

Boyd Schaufelberger, Holstein Association USA, Inc.

Mike Schiller, Associated Milk Producers, Inc.

Steve Strickler, Dairy Farmers of America

Kate VandenBosch, UW-Madison CALS

Clark Vilter, WI Guernsey Breeders Association

**Bryan Voegeli, Purebred Breeders of World Dairy Expo

Doug Williams, At-Large Director

**Denotes Member of Executive Committee



Judge

Carl Phoenix
Sunderland, Ontario

Associate Judge

Joel Phoenix
Cannington, Ontario

Superintendent

Ken Elliott
Marshall, Wisconsin

World Classic

2018 Sale
Friday, October 5
7 p.m.
Coliseum

★ 2018 ★
**WORLD
 DAIRY
 EXPO**

Please see the World Dairy Expo Premium Book for additional Dairy Cattle Show award sponsors.



World Dairy Expo, Inc.
 3310 Latham Drive
 Madison, Wisconsin 53713 USA
 Phone: 608-224-6455 • Fax: 608-224-0300
 worlddairyexpo.com • wde@wdexpo.com
 facebook.com/worlddairyexpo • twitter.com/wdexpo
 instagram.com/wdexpo • snapchat: worlddairyexpo
 ExpoFM: 95.7 FM

Staff

Scott Bentley, General Manager
 Ann Marie Magnochi, Dairy Cattle Show Manager
 Laurie Breuch, Dairy Cattle Show Coordinator
 Crystal Ripp, Trade Show Manager
 Becky Bachman, Trade Show Coordinator
 Katie Schmitt, Communications Specialist
 Annette Ziegler, Accounting Manager
 Dawn Dommissie, Administrative Services Manager
 Cassi Miller, Program Assistant
 Laura Herschleb, Attendee Services Coordinator
 Joan Judd, Administrative Assistant

Future Dates:

Oct. 1-5, 2019 • Sept. 29-Oct. 3, 2020 • Sept. 28-Oct. 2, 2021

A special "Thank You" to all Dairy Cattle Show sponsors including:

Supreme Champion of the Open Show
 Gregory Blaska Memorial Trophy: World Dairy Expo, Inc.

Supreme Champion of the Open Show Cash Awards: BouMatic

Supreme Champion of the Open Show Royal Blanket: Agpro, Inc.

Supreme Champion of the Open Show Director's Chair:
 International Protein Sires

Reserve Supreme Champion of the Open Show Cash Award:
 Trans Ova Genetics

Reserve Supreme Champion of the Open Show Royal Blanket:
 E-Zee Milking Equipment, LLC

Reserve Supreme Champion of the Open Show Director's Chair:
 Joe & Patti Schluter

Grand Champion of the Open Show Sashes: Arethusa Farm

\$1,000 Grand Champion of the Open Show Cash Awards:
 Udder Comfort International, Inc.

Intermediate Champion of the Open Show
 One free ovum pick-up (OPU): Vytelle, LLC

Supreme Champion Heifer of the Open Show
 W. Terry Howard Memorial Trophy: World Dairy Expo, Inc.

Supreme Champion Heifer of the Open Show Cash Award:
 Trans Ova Genetics

Supreme Champion Heifer of the Open Show Royal Banner:
 Trans Ova Genetics

Reserve Supreme Champion Heifer of the Open Show Cash Award:
 Golden Calf Company

Reserve Supreme Champion Heifer of the Open Show Royal Banner:
 Golden Calf Company

Junior Champion of the Open Show Sashes: GHD

Neck Ribbons & Medallions:
 Jetstream Genetics, LLC

Morning Coffee Cart: ABS Global and St. Jacobs ABC

Pre-Show Donuts & Coffee: Dane County Holstein Breeders

DeLaval Dairy Cattle Exhibitor Appreciation Picnic: DeLaval, Inc.

Herdsmanship Jackets & Awards: Select Sires, Inc.

Superintendent Jackets: Masters Choice Hybrids

Milking Parlor Equipment & Supplies: BouMatic

Exhibitor Hats: Agri-Plastics Mfg.

Exhibitor Welcome Bags & Milk Buckets: Nasco

Milk Receiving Tanks: Poly Dome

Barn Disinfectant: Ecolab

Cattle Check-In Apparel: Bio-Vet, Inc.

Sharps Containers: Elanco Animal Health

RFID Tag Sponsor: Datamars, Inc.

ExpoTV Broadcast: Boehringer Ingelheim, Dairy Tech, Inc.
 Madero Dairy Systems, and STgenetics

A special "Thank You" to all Junior Dairy Cattle Show sponsors including:

Junior Show Gold Sponsor: MilkSource Genetics, Trans Ova Genetics and Tom Morris Ltd.

Supreme Champion of the Junior Show Cash Award: BouMatic

Supreme Champion of the Junior Show Trailer Award: Frenchville Trailer Service, LLC

Supreme Champion of the Junior Show Royal Blanket: Select Sires, Inc.

Supreme Champion of the Junior Show Director's Chair: International Protein Sires

Reserve Supreme Champion of the Junior Show Cash Award: Udder Comfort International, Inc.

Reserve Supreme Champion of the Junior Show Royal Blanket: Ameriprint

Reserve Supreme Champion of the Junior Show Director's Chair, In Memory of Tom Lyon: Maple Lawn Farm

Grand Champion of the Junior Show Sashes: FarmFirst Dairy Cooperative

\$500 Grand Champion of Junior Show Cash Awards: Udder Comfort International, Inc.

Supreme Champion Heifer of the Junior Show Cash Award: Golden Calf Company

Supreme Champion Heifer of the Junior Show Royal Banner: Scott Culbertson

Reserve Supreme Champion Heifer of the Junior Show Cash Award: Ghost Hollow

Reserve Supreme Champion Heifer of the Junior Show Royal Banner: Ebert Enterprises LLC

Junior Champion of the Junior Show Sashes: Duane T. Cole, DDS

Junior Show Neck Ribbons & Medallions: Accelerated Genetics

Dairy Cattle Youth Exhibitor Pizza: Endovac Animal Health

THE NEXT FRONTIER

★
SHOWRING SPONSORS

TRANS OVA
genetics

SEMEX[®]

Genetics for Life[®]

Phibro
ANIMAL HEALTH CORPORATION **TM**

RAILBIRD JUDGING CONTEST

See how your placings match up to the official judges in Expo's new Railbird Judging Contest!

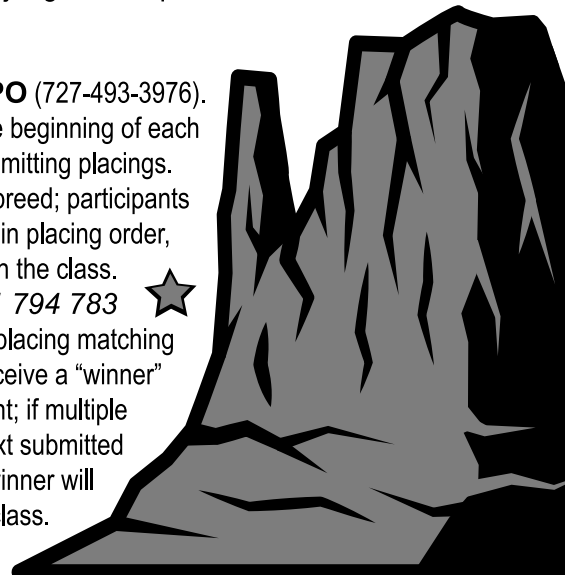
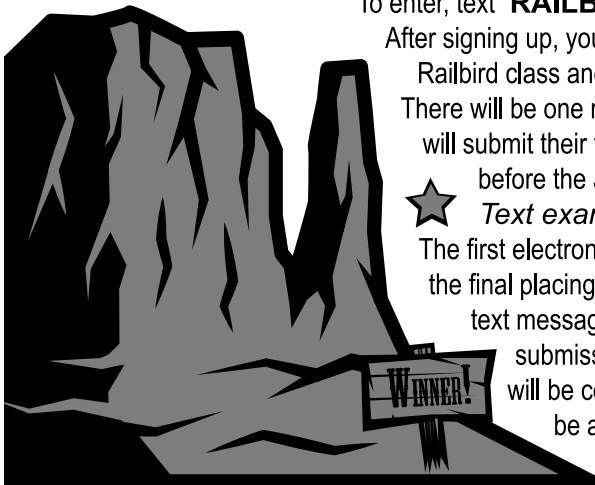
To enter, text "**RAILBIRD**" to **727-4-WDEXPO** (727-493-3976).

After signing up, you will receive an alert at the beginning of each Railbird class and given instructions for submitting placings.

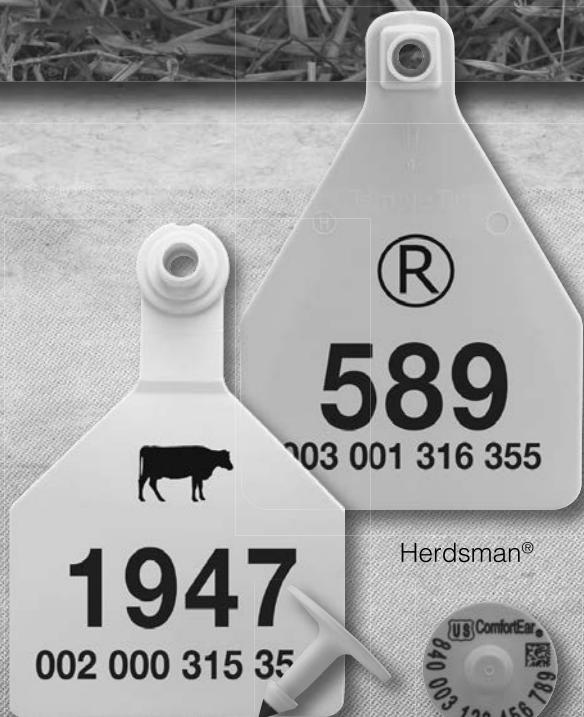
There will be one milking class selected per breed; participants will submit their top four backtag numbers, in placing order, before the Judge makes his first pull in the class.

★ *Text example: Railbird 798 781 794 783* ★

The first electronic time-stamped accurate placing matching the final placing of the official judge will receive a "winner" text message. One entry per participant; if multiple submissions are made, the last text submitted will be considered the entry. One winner will be awarded for each Railbird class.



TOUGH TAGS FOR TENDER EARS



Z2 No-Tear-Tag®

ComfortEar® 840

There are plenty of tough ear tags on the market today. But only genuine Z Tags and Temple Tags combine rugged durability with advanced design features that make it easy to tag young calves without tearing tender young ears. So this calving season, invest in the trusted tags that treat your calves with TLC – Z Tags and Temple Tags.



For more information call 800-433-3112 or contact your distributor.

© 2018 DATAMARS. Z Tags and Temple Tag are registered trademarks of DATAMARS. All rights reserved.



Solutions for Animal Health and Productivity



We know a healthy herd is a productive one. Our comprehensive portfolio of dairy offerings includes proven and effective solutions that help you address important challenges and optimize the opportunity to support the health and productivity of your cows.

Providing you products such as:

Nutritional Specialties, Mineral Nutrition Ingredients
and Vaccines

Phibro
ANIMAL HEALTH CORPORATION TM

AB20

Animate

cellerate
YEAST SOLUTIONS

OmniGen-AF

GemStone



>>DTR: **INTENSE DEVOUR POUTINE-RED**
Res Jr. Champion & 1st Intermediate Calf
Quebec Spring Red Holstein Show- 2018
Owned by: Westcoast Holsteins, BC



Devour^{RC}

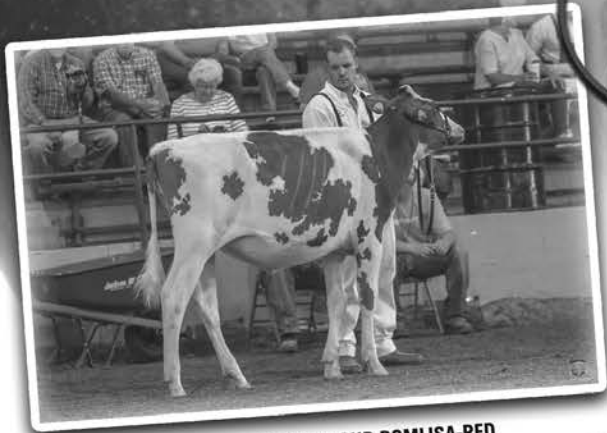
14H07802

HIGH OCTANE ♣ (EX-94-2E-EX-MS) DESTRY
(EX-94-2E-EX-MS) TALENT ♣ (EX-96-4E-EX-MS-DOM) APPLE

+3.06 PTAT
+3.55 UDC | +4.94 RUH | +4.54 RUW

Devour comes from an All-American family and his seven closest dams average 94.6 points. Three dams have 12 All-American nominations under their belt, they have proven they transmit to the next generation. DEVOUR this line of the Apple family to make the next GREAT RED ONE!

CONTACT YOUR LOCAL REPRESENTATIVE TODAY!



>>DTR: **INTENSE DEVOUR POMLISA-RED**
1st Place Winter Heifer Calf | Ohio State Fair Red & White Show- 2018
Owned by: Alyson & Kenlee Philips

AcceleratedGenetics®



Kleen Flo Inflations

Compatible with Conewango and Milk-Rite Inflations

This rubber is FDA compliant and has been specifically engineered for the Kleen Flo Liners and are “Phthalates Free”. Soft and Responsive in relation to pulsation signals and maintains an excellent teat massage. Kleen Flo Liners are designed for High Performance, Consistency, Quick Break in time and a great Vacuum shut-off

FOR 06 SHELL			
<p>25076 - Kleen Flo TLC-D1 Compatible with: Conewango ID-T1, Milk Rite TLC-D1</p> <p>25077 - Kleen Flo TLC-D1-V - vented Compatible with: Conewango ID-T1-V, Milk Rite TLC-D1-V</p> <ul style="list-style-type: none"> NARROW BORE LOWER VACUUM <p>Replacement for: 25050 & 25053</p>	<p>25072 - Kleen Flo 01A Compatible with: Conewango ID-01A, Milk Rite 01BU, Kleen Flo 01</p> <ul style="list-style-type: none"> NARROW BORE LARGE FLEXIBLE MOUTH PIECE to accommodate different teat sizes 	<p>25073 - Kleen Flo 01AU-LI Compatible with: Conewango ID-08E, Milk Rite 01AU, Milk Rite 01A-U-LT, Milk Rite 08E-U-LT</p> <ul style="list-style-type: none"> MEDIUM/NARROW BORE LOW SUP MEDIUM MOUTH <p>Replacement for: 25011, 25010 & 25010</p>	<p>25075 - Kleen Flo 01D Compatible with: Conewango Jersey ID-01D, Milk Rite Jersey</p> <ul style="list-style-type: none"> NARROW BORE SMALLER FIRM MOUTH LOW SUP <p>Replacement for: 25037</p>
FOR SS BM SHELL		FOR BIO	FOR PLASTIC UN SHELL
<p>25086 - Kleen Flo BM400M Compatible with: Conewango IB-LB, Milk Rite BM 400M</p> <p>25087 - Kleen Flo BM400M-V - vented Compatible with: Conewango IB-LB-V, Milk Rite BM 400M-V</p> <ul style="list-style-type: none"> LOW SUP LARGE BORE REINFORCED LINE <p>Replacement for: 25019 & 25020</p>	<p>25092 - Kleen Flo 004U Compatible with: Conewango IW-004, Milk Rite 004U</p> <ul style="list-style-type: none"> NARROW BORE MILKS FAST & CLEAN <p>Replacement for: 25024</p>	<p>25096 - Kleen Flo IU-282 Compatible with: Conewango IU-282, Milk Rite 282U, Milk Rite IU-282, Milk Rite 282U-LT</p> <ul style="list-style-type: none"> NARROW BORE FLEXIBLE MILK TUBE LOW SLIPPAGE <p>Replacement for: 25031</p>	

We trust you will be happy with the Kleen Flo Liners. If not we will issue a full credit if returned within 30 days of sale. Offer good through 2018

“PHATHALATES FREE”

STOP BY OUR BOOTH FOR A FREE SAMPLE TODAY.

STOP BY OUR BOOTH AND SEE OUR RAPID EXIT PARLOR

REQUEST A COPY OF OUR 2018 PARLOR CATALOG!



Booth EH2811-2911

Offices in Gordonville, PA and McFarland, WI
For more information on Custom Parlor Packages contact us at:
800-729-4118 info@ezmilking.com www.ezmilking.com



Time. Labor. Fuel. Feed. Save on all of these with our EXCLUSIVE Balanced Flow™ Technology.

Don't Just Feed...





GENUINE CERTIFIED HARVESTORE PARTS

- > Engineered Specifically for Harvestore Systems and Unloaders
- > 67+ Years of Experience
- > Local Authorized Dealer Network
- > Competitively Priced
- > Long Lasting
- > Best Warranty in the Market



NEW CHAINS



NEW BREATHER BAG



NEW GEARBOX

QUALITY FEED FROM QUALITY PRODUCTS

CST's Harvestore® BLUEPRINT Parts represent the finest quality and service for your Harvestore System. Don't settle for sub-standard after-market parts. Get Harvestore BLUEPRINT Parts, the only parts specifically engineered and manufactured for your Harvestore System.

Join Us at
World Dairy Expo
Booth #1201-1303
ENTER TO WIN
OUR RAFFLE!

- > **Cutter and Conveyor Chains for XL 200, XL 400, Alliance and Goliath Unloaders**
 - Smooth bearing surfaces
 - Laser-cut finished pitch holes
 - Shot peened sidebars
 - Proprietary steel alloys
 - Case hardened pins & bushings
 - Heat treated sidebars
 - Pre-lubricated joints
- > **Breather Bags**
 - Individual grommeted mounting tabs
 - Heavy-duty material withstands 2x greater pressure & pull force
 - 3-year warranty - Ask your local dealer
 - 3x stronger than competition after exposure to caustic conditions
- > **Gearbox**
 - Extended bearings for better drive shaft support
 - Regreasable bearing that prevents bearing contamination
 - Integrated drive shaft for reduced clearances & improved gearbox life

CST Industries | 345 Harvestore Drive | DeKalb, IL 60115 | 844-44-TANKS | harvestore.com



Reduced aerobic spoilage and improved silage bunk life

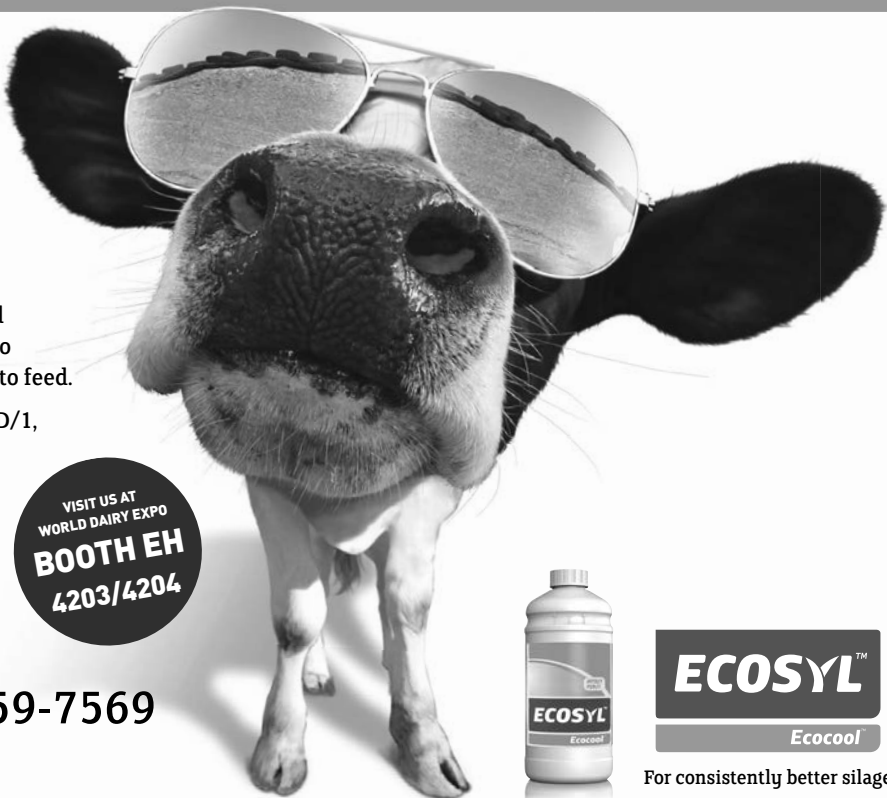
How cool is that?

Ecocool improves fermentation and reduces aerobic spoilage in silage so there is more, better-quality silage to feed.

- Contains *L. plantarum* strain MTD/1, the world's most proven *Lactobacillus* strain
- Plus *L. buchneri* strain PJB/1 for improved feedout and bunk life

VISIT US AT
WORLD DAIRY EXPO
BOOTH EH
4203/4204

Telephone 800-759-7569
www.ecosyl.com



For consistently better silage

Visit us at
EH 2011



Cow Comfort Solutions



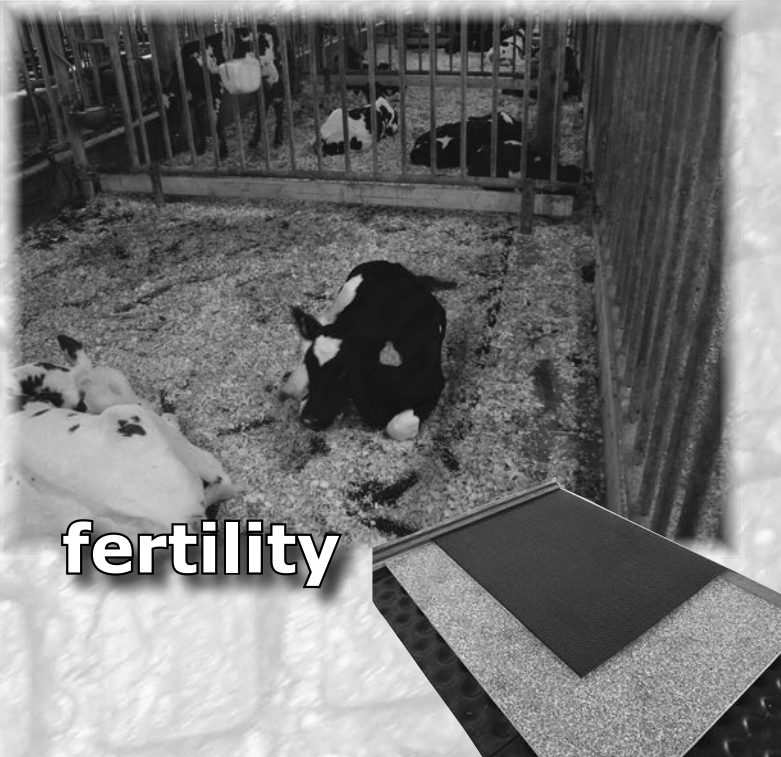
milk yields



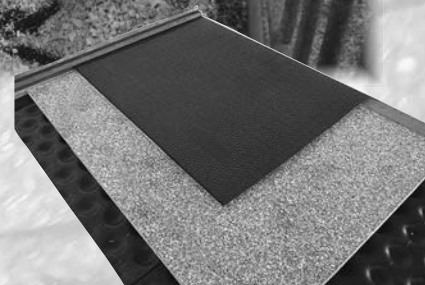
hoof health



lying time



fertility



Agromatic INC

(800) 800-5824
www.agromatic.net
Fond du Lac, WI

Purple Cow Gift Shop

Located on the north end of the Exhibition Hall lobby, the Purple Cow will be open from 9 a.m. - 6 p.m. Tuesday through Friday and 9 a.m. - 4 p.m. on Saturday. Bring your list and shop early for the largest selection!



World Dairy Expo's
Official Gift Shop



UDDER TECH



VISIT OUR BOOTH ARENA BUILDING #500
or SHOP ONLINE: UDDERTECHINC.COM
888.438.8683



UDDER TECH

**FREE SHIRT WITH
\$50 ORDER AT OUR BOOTH
AT WORLD DAIRY EXPO**

*WHILE SUPPLIES LAST



Get your fix just outside
the Coliseum at the
grilled cheese stand.

Featuring award-winning AMPI cheese.



www.ampi.com
800-533-3580

Stop by the AMPI booth,
Exhibition Hall #4407,
to learn more about the
dairy farmer-owned
cooperative behind the
delicious cheese.

YOUR PARTNER FOR:
DAIRY, BEEF
AND GOAT GENETICS

DAIRY BREEDS



HOLSTEIN



BROWN SWISS



PIE ROUGE



NORMANDE

HIGH POTENTIAL BEEF BREEDS



CHAROLAISE



LIMOUSINE



BLONDE D'AQUITAINE



PARTHENAISE



BAZADAISE



ROUGE DES PRÉS

HARDY DAIRY BREEDS



ABONDANCE



TARENDAISE

GOATS



ALPINE



SAANEN



BOER

CROSSING BEEF BREEDS



CHAROLAIS EXCELLENCE



INRA 95



LIMOUSIN



BLOND

HARDY BEEF BREEDS



AUBRAC



GASCONNE



SALERS

LE FRENCH TOUCH

reliability & performance

COME VISIT US AT OUR BOOTH AL 221-222 AT WORLD DAIRY EXPO, MADISON !

The new DeLaval VMS™ V300 milking robot

99.8%
Attachment rate

Up to
50%
faster
attachment
time

Up to
7500 lbs
milk per day

10%
Higher capacity

**IT ALL REVOLVES
AROUND YOU**

We live milk



www.delaval.com

★ 2018 ★
**WORLD
DAIRY
EXPO**

Visit our booths
EH3011-3315 & TM754

LEGEND.

They say with age comes wisdom.

Well, when the business is passed down over 5 generations, wisdom is something you're born into. But you're responsible for adding value beyond that inheritance. It's your progressive thinking that leads to the next generation of our product.

Creating "Legendary" is a modern day practice.

**VISIT US AT
WORLD DAIRY EXPO
OCT. 2-6
BOOTH EH 2008-2309**



calf-tel.com

**SHOP CALF-TEL ACCESSORIES
NOW AVAILABLE ONLINE**



HEART MEETS SMART

© 2018 HAMPEL - ALL RIGHTS RESERVED

Class **705 Spring Heifer Calf**

Born 03/01/2018 - 05/31/2018

Premiums: \$100, 95, 90, 85, 80, 75, 70, 65, 60, 55, 50, 40, 40, 40, 35, 35, 35, 30, 30, 30, 30, 25, 25, 20

1st Place Award presented by Genes Diffusion, Verona, WI

Bred & Owned Award presented by Sonnenbrook Holsteins, Belleville, WI

3100 All-Glo Solomon Keurig	03/13/2018	B&O	S-Walnutlawn Solomon-ET D-All-Glo Gold C Kappuccino-ET	Justin & Ashley Kaufman Berlin PA
3101 Wi Fischerdale Kboy Exist	03/10/2018	B&O	S-Morningview Mcc Kingboy D-Wi Fischerdale Atwood Exile	Payton, Braelyn & Reagan Sarbacker Verona WI
3102 Sco-Lo Avalanche Roll On-ET	03/09/2018		S-Dymenthalm Mr Apples Avalanche D-Miss Slo-Lo-Kc Rosalee-ET	M. Sprecher, K Zapalac & S Paulson Arlington WI
3103 Cloverhill DM Anyas Abra-ET	03/08/2018		S-Val-Bisson Doorman-ET D-Cloverhill Atwood Anya-ET	Joseph, Tammy & Megan Kirchner Memphis MO
3104 Ms Macland T&L Chase Gold D-02-00 139 10,192 3.0% 303	03/08/2018	B&O	S-Mr D Apple Diamondback D-Royal Lynn GH Chase For Gold	Scott Culbertson and T&L Cattle Company Elgin MN
3105 Reyncrest Solomn Lucille-ET	03/08/2018	B&O	S-Walnutlawn Solomon-ET D-Reyncrest Alexander Lavish-ET	Andrew Reynolds Corfu NY
3106 Show-Mar D-Back Uppercut	03/08/2018	B&O	S-Mr D Apple Diamondback D-Show-Mar Storm 1320	Dylan Brantner Evans City PA
3107 Xcaret Doorman Maui	03/08/2018	B&O	S-Val-Bisson Doorman-ET D-Xcaret Beemer Maholly	Tim Hoesse, Kate & Cooper Heeren Glencoe MN
3108 Gibbs Dman Big Smile-ET D-04-03 279 29,860 3.8% 1,132	03/07/2018	B&O	S-Val-Bisson Doorman-ET D-Gibbs Atwood Swayna	Heath & Payton Gibbs Epworth IA
3109 DJ-Purepride Fire and Ice-ET	03/06/2018		S-Mr Chassity Gold Chip-ET D-DJ-Purepride Icemkr-Red-ET	Wayne & Samantha Giese Edgar WI
3110 Siemers Avch Haylina-ET	03/06/2018	B&O	S-Dymenthalm Mr Apples Avalanche D-Siemers Dundee Haya 9652-ET	Jake, Connor & Lauren Siemers Newton WI
3111 Siemers Jcby Molly 29227-ET	03/06/2018	B&O	S-Cycle Doorman Jacoby-ET D-Ryan-Vu Sid Molly	Jake, Connor & Lauren Siemers Newton WI
3112 ZBW M Kd Lori	03/06/2018	B&O	S-Woodcrest King Doc D-ZBW M Light Beem	Mason Ziemba Durhamville NY
3113 B-J-Grove Crush Rammie-TW D-02-06 305 20,572 3.2% 661	03/05/2018	B&O	S-Maverick Crush D-B-J-Grove McQueen Rainbow	Kasey Clanton Mulberry Grove IL
3114 Budjon-Vail Bubbly Girl-ET D-04-04 127 12,539 3.7% 461	03/05/2018		S-Dymenthalm Mr Apples Avalanche D-Lingle Gold Freaky Girl	Westcoast Holsteins Chilliwick BC
3115 Pfaffsway Gold Chip Brew	03/05/2018	B&O	S-Mr Chassity Gold Chip-ET D-Pfaffsway As Beyond Belief	Kole & Beau Trapp and Olivia Pfaff Taylor WI
3116 Banowetz Crush Skylite	03/04/2018	B&O	S-Maverick Crush D-Banberg Braxton Saltine	Levi Banowetz Charlotte IA
3117 Kamps-RX Appleb Atbest-ET	03/04/2018		S-Val-Bisson Doorman-ET D-KHW Regment Apple B-Red-ETN	Tim, Barb & Kyle Natzke Fond Du Lac WI

3118	T-Triple-T Prime Suspect					03/04/2018	B&O	S-Oh-River-Syc Byway-ET	Colton Thomas
	D-05-10	305	22,426	5.5%	1,224	3.5%P	791P	D-T-Triple-T Gold Promise-ET	North Lewisburg OH
		365	25,637	5.6%	1,427	3.5%P	898P		
3119	Budjon-Vail A Cover Girl-ET					03/03/2018		S-Dymenthalm Mr App Avalanche-TW	Rodney Bohnhoff
	D-03-02	305	24,460	3.6%	876	3.0%P	745P	D-Lingle Gold Freaky Girl-ET	Plymouth WI
3120	Ms Fairholm Temptation-ET					03/03/2018		S-Dymenthalm Mr Apples Avalanche	Darren Ropp and Delbert Dahl
								D-Ernest-Anthony Terrific-ET	Strawn IL
3121	Ms Pg Pv All In					03/03/2018	B&O	S-Eclipse Allthway-ET	Kanani Price and Kristopher Ackley
								D-Ms Caraibes Callin U Out-ET	Jonesboro IN
3122	Blondin t&l Avalanche Angelina					03/02/2018	B&O	S-Dymenthalm Mr Apples Avalanche	Ferne Blondin
	D-01-10	305	22,516	3.8%	847	3.3%P	732P	D-Elmbridge Atwood Angelina	Saint-Placide QC
		365	26,859	3.8%	1,032	3.3%P	888P		
3123	Budjon-Abbott Avl Anitta-ET					03/02/2018		S-Dymenthalm Mr Apples Avalanche	Glamourview-lager & Walton
	D-01-11	301	19,490	3.4%	672	3.0%P	587P	D-Walk-Era Dundee Annelise	Walkersville MD
3124	Camp-Gold Doorman Diva10-ET					03/02/2018	B&O	S-Val-Bisson Doorman-ET	Mike and Cindy Weimer And Wade Sturgeon
								D-Siemers Atw Hayas-Diva-ET	Emlenton PA
3125	J&K-Vue DBack Guinness-ET					03/02/2018	B&O	S-Mr D Apple Diamondback	Matthew Boop and Jessica Nolt
								D-J&k-Vue Encore Gina-ET	Millmont PA
3126	Jacobs Unix Velour					03/02/2018	B&O	S-Croteau Lesperron Unix	Ferne Jacobs
	D-04-11	305	38,314	4.6%	1,764	3.4%P	1,294P	D-Jacobs Doorman Valesia	Cap-Sante QC
		365	45,047	4.7%	2,097	3.4%P	1,541P		
3127	K-Hurst Doorman Peakaboo-ET					03/02/2018		S-Val-Bisson Doorman-ET	Dusty & Nicole Schirm & Silver-Mist
								D-Kingsmilldcf Damon Precious	Ashville OH
3128	Lizettes Avalanch Laynie-ET					03/02/2018		S-Dymenthalm Mr Apples Avalanche	Westcoast Holsteins
	D-04-02	305	30,356	4.2%	1,201	3.2%P	1,222P	D-Lottos Atwood Lizette	Chilliwack BC
3129	Maple Flat B Crush Delight					03/02/2018		S-Maverick Crush	Chris & Jen Hill and Winright Holsteins
	D-02-11	305	28,950	3.6%	1,041	3.1%P	904P	D-Lin-Ro Symt Doris-ET	Thurmont MD
3130	Miss Show-N-Style Pippa					03/02/2018	B&O	S-Walnutlawn Solomon-ET	Show-N-Style Cattle Co and K. Luchterhand
	D-01-11	305	27,060	4.4%	1,200	3.3%P	886P	D-Miss Show-N-Style Pepper-ET	Orangeville IL
3131	Ms Fier-Ep D-Back Bella-ET					03/02/2018	B&O	S-Mr D Apple Diamondback	Fier-View\ Russ& Heather Thyen
								D-Rosedale Blake Ball	Grove City MN
3132	Cherry Crest Scalene					03/01/2018	B&O	S-Cycle Mcgucci Jordy-Red	Cherry Crest, Weavercroft
								D-Speek-NJ Uno Dolce Rae-ET	West Salem OH
3133	Damestar Unix Ivory					03/01/2018		S-Croteau Lesperron Unix	Ferne Jacobs & Ferme Jean-Paul Petitclerc Et Fils
	D-04-06	305	24,055	4.3%	1,036	3.3%P	794P	D-Damestar Embassy Isadora	Cap-Sante QC
		365	26,253	4.4%	1,157	3.4%P	884P		
3134	Ernest-Anthony Acme Addy-ET					03/01/2018		S-KHW Elm-Park Acme-ET	Joseph, Tammy & Megan Kirchner
								D-EK-Oseeana Ambrosia-ET	Memphis MO
3135	Indies-View-GW Lorelei Ammo					03/01/2018	B&O	S-Mr Leaninghouse Ammo-P-ET	Garrett Schmidt
								D-Indies-View-GW Laurissa Sha	Melrose WI

3136 Lindlaur Diamondback Andie	03/01/2018	S-Mr D Apple Diamondback D-Klingendale Gold Chip Addie	Lindsay and Lauren L'Amoreaux Louisville OH
3137 Lizettes Avalanch Lattice-ET D-04-02 305 30,356 4.2% 1,201 3.2%P 1,222P	03/01/2018	S-Dymenthalm Mr Apples Avalanche D-Lottos Atwood Lizette	Westcoast Holsteins Chilliwack BC
3138 Ms Beauty Aval Blush-ET	03/01/2018	S-Dymenthalm Mr Apples Avalanche D-Jacobs Sid Beauty-ET	Brooke M Clark of GMC Farm Cornish Flat NH
3139 Ms Smith Oak Doorman Salsa D-02-00 305 26,810 3.8% 1,210 3.5%P 1,019P	03/01/2018 B&O	S-Val-Bisson Doorman-ET D-SCO-LO-AF Sid Sangria	Chris & Jen Hill and Bill Smith Thurmont MD
3140 Ms Solomon Karrots	03/01/2018 B&O	S-Walnutlawn Solomon D-Lima Kansas Hurrican	M Decker, M Farber, S & J Swarts Wantage NJ
3141 OCD Callen Analise	03/01/2018	S-OCD 1stclass Callen-ET D-Petitclerc Doorm Analise-ET	Kenlee Philips Lingleville TX
3142 Ocean-View Heaven Sent-ET	03/01/2018 B&O	S-Sonnek Gc Corvette-ET D-Ocean-View Brxton Helion-ET	Ocean View Genetics Deerfield WI
3143 Our-Favorite Charming-ET D-01-11 142 11,617 4.5% 526 3.3%P 388P	03/01/2018 B&O	S-Maverick Crush D-Our-Favorite Compelling-ET	Todd and Mary Stanek Fall Creek WI
3144 Red-Brae Doorman Theresa-ET D-02-03 160 8,622 4.3% 371 3.2%P 274P	03/01/2018 B&O	S-Val-Bisson Doorman-ET D-Oakfield BKW Char Theron-ET	Elise & Brady Bleck Glenbeulah WI
3145 Reyncrest Avalnche Lusha-ET	03/01/2018 B&O	S-Dymenthalm Mr Apples Avalanche D-Reyncrest Alexandr Lavish-ET	Andrew Reynolds Corfu NY
3146 Sidbeauty Avalache Bailey-ET	03/01/2018	S-Dymenthalm Mr Apples Avalanche D-Jacobs Sid Beauty-ET	Eaton Holsteins, B&c Murphy, & Co-Vale Holsteins Marietta NY
3147 Souvenir Classic Bombay D-04-04 174 10,825 3.7% 399 3.4%P 372P	03/01/2018	S-O'Conors Classic-ET D-Frater Damion Bruxelle	Savannah & Kolton Crack Richmond QC

Class 706 Winter Heifer Calf

Born 12/01/2017 - 02/28/2018

Premiums: \$100, 95, 90, 85, 80, 75, 70, 65, 60, 55, 50, 40, 40, 40, 35, 35, 35, 30, 30, 30, 30, 25, 25, 20

1st Place Award presented by Ran-Rose Holsteins, Corey Geiger & Krista Knigge, Mukwonago, WI

Bred & Owned Award presented by International Protein Sires, Rock Springs, WI

3148 Sheeknoll Solomon Anita-ET	01/05/2018	S-Walnutlawn Solomon-ET D-Sheeknoll Durham Arrow	John Cunningham Penngrove CA
3149 Comestar Lautastar Goldwyn_et	01/02/2018	S-Braedale Goldwyn D-Comestar Lautasha Doorman	Doeberier, Bowen and Schilling West Salem OH
3150 Beslea Doorman Lattitude D-05-11 305 30,423 3.7% 1,133 3.2%P 979P 365 3,435 3.7% 1,279 3.2%P 1,120P	12/20/2017	S-Val-Bisson Doorman-ET D-Beslea Goldwin Lacy	Rick & Shannon Allyn Jeremiah Lungwitz Canaan CT
3151 Ms Pg Pv Beem Of Light	12/18/2017 B&O	S-Pol Butte Mc Beemer-ET D-Ms After Being Lucky-ET	H & H McIsaac and M, M & M Price Martinton IL
3152 Budjon-Vail Solomon Hollee-ET D-03-06 132 13,026 3.7% 486 2.8%P 370P	12/16/2017	S-Walnutlawn Solomon-ET D-Comestar Hopra Atwood	Elite Genetics Co Ltd Lomira WI
3153 All-Glo Byway Montral-ET	12/15/2017	S-Oh-River-Syc Byway-ET D-Pennwood Goldchip Madison	Eaton Holsteins, Clarkvalley, Mt. Elgin Marietta NY

3154 Ms Thorgyway Mogul Loveable	12/12/2017	B&O	S-Mountfield Ssi Dcy Mogul-ET D-Robsan Hm Luckyleah358	Jenna Thorgerson Sheldon WI
3155 B-J-Grove Doorman Buggy-ET D-02-04 305 25,808 3.1% 801 3.2%P 822P	12/09/2017	B&O	S-Val-Bisson Doorman-ET D-B-J-Grove Atwood Butterfly	Kasey Clanton Mulberry Grove IL
3156 Fairmont Octane Luster D-04-08 305 29,060 3.8% 1,094 3.3%P 968P	12/09/2017		S-Stantons High Octane D-Vt Pond View Atwood Lady	Savannah & Kolton Crack Richmond QC
3157 Fairmont Avalanche Amelia-ET	12/08/2017		S-Dymenthalm Mr Apples Avalanche D-VT-Pond View Gold April-ET	Jaydn & Kennedy Kimball and Noah Reid Windham ME
3158 Frankhaven Goldwyn Fancy-ET	12/08/2017		S-Braedale Goldwyn D-Morgrove Allen Fallon-ET	Doeberienr, Bowen and Dymnt West Salem OH
3159 Kellercrest Crush Lip-Stick D-02-00 305 25,910 4.3% 1,112 3.0%P 783P 315 26,770 4.3% 1,148 3.0%P 810P	12/06/2017	B&O	S-Marerick Crush D-Kellercrest Mont Lisbeth-ET	Kimberly Keller Mt. Horeb WI
3160 Quietcove First Class-ET D-03-07 305 24,260 3.6% 870 3.1%P 752P 365 27,020 3.6% 977 3.2%P 860P	12/06/2017		S-Val-Bisson Doorman-ET D-Quietcove-W Gold Flower-ET	David Dymnt, Kathleen O'Keefe & Dusty Schirm Hammond WI
3161 Topp-View Union Adrenaline	12/06/2017		S-Our-Favorite Union 142-ET D-Topp-View Braxto Alexis	Robb Hart and Matt MacLaury Chittenango NY
3162 Intrigue Hypnotic Storm	12/05/2017	B&O	S-Mr Hotstuffs Hypnotic-ET D-Intrigue Avatar 1476	Cory & Kendalyn Schmidt Cosmos MN
3163 Ocean-View Admire Me D-06-05 270 38,320 4.5% 1,733 2.9%P 1,094P	12/05/2017	B&O	S-Maple-Downs-I G W Atwood-ET D-Dun-Did Sanchez Arabella	Ocean View Genetics Deerfield WI
3164 Ren-Bow Corvette Lollipop	12/05/2017		S-Sonnek Gc Corvette-ET D-Ren-Bow Atwood Lilly	Olivia & Lillian Finke and Ruth Baumbauer London OH
3165 Bucks-Pride Slater Maria	12/04/2017	B&O	S-Walnut Lawn Slater-ET D-Bucks-Pride Clark Annmarie	Bucks Pride LLC Bloomville OH
3166 Crave Expander Gabe 11141	12/04/2017	B&O	S-Stantons Expander D-Crave Attic Gabrielle 8756	Roseanne Crave Waterloo WI
3167 Quietcove Foxys Baffle Me D-02-02 250 16,640 4.1% 685 3.2%P 531P	12/04/2017	B&O	S-Mr D Apple Diamondback D-Quietcove-W Foxys Brownie-ET	Lilly A & Trapper C Elsass Wapakoneta OH
3168 RuAnn Jacob Sachse-75891-ET	12/04/2017		S-Cycle Doorman Jacoby-ET D-RuAnn San Sachse-5124519	Caydee Weese Turlock CA
3169 T-Triple-T Dempsey Payton D-02-03 266 18,320 4.7% 860 3.3%P 611P	12/04/2017	B&O	S-Lirr Drew Dempsey D-T-Triple-T Pizzazz-ET	Colton Thomas North Lewisburg OH
3170 Miss Ocd Doorm Georgette-ET	12/03/2017	B&O	S-Val-Bisson Doorman-ET D-Penlow Geography Goldwyn-ET	Oakfield Corners Dairy Oakfield NY
3171 Ms Borderview Doorman Salty D-02-07 305 22,230 4.0% 884 3.2%P 706P	12/03/2017		S-Val-Bisson Doorman-ET D-Craigcrest Rejoices Sidney-ET	Justin, Daniel, Neveah, Emmet & Tyler Chupp Inola OK
3172 Ocd Blake Findlay-ET	12/03/2017	B&O	S-Walnutlawn Blake-ET D-Ms Ken-Dren Sanchez Feather	Joseph & Amanda Nash & Oakfield Corners Lyndonville NY

3173 BHL-HA Faiths Fame	12/02/2017	B&O	S-Sonnek Gc Corvette-ET D-OCD Shadow Leap Of Faith-ET	Kennedy Kimball and Noah Reid Windham ME
3174 Cash Atwood Danae	12/02/2017	B&O	S-Maple-Downs-I G W Atwood D-Westcoast Doorman Cash 3444	Precision Genetics Chilliwack BC
3175 Duckett Doorman Gail-ET	12/02/2017		S-Val-Bisson Doorman-ET D-Laidlawn Sanchez Gemini	Walker & Carter Behnken Omaha NE
3176 Duckett Doorman Gina-ET D-07-05 177 19,106 4.0% 767	12/02/2017	B&O	S-Val-Bisson Doorman-ET D-Laidlawn Sanchez Gemini	Mike & Julie Duckett Rudolph WI
3177 Fer-Crest Thunderstruck	12/02/2017		S-Walnutlawn Solomon-ET D-Rob-Cri Duckett Gw Tory-ET	Rhett, Shanelle, Wyatt & Garrett Borth Ellsworth WI
3178 Gbm C Jills Jewel	12/02/2017	B&O	S-Maverick Crush D-Gbm Atwood Jill	Greg, Kimberly & Kayla Moret Prairie Du Chien WI
3179 Holbric Ammo Annaleigh-ET D-03-01 305 30,841 4.0% 1,222 3.4%P 1,041P 363 33,659 4.0% 1,361 3.4%P 1,158P	12/02/2017	B&O	S-Mr Leaninghouse Ammo-P-ET D-Holbric Destry Analiese	Morgan Olbrich Harvard IL
3180 Keystone Solomon Allstar	12/02/2017	B&O	S-Walnutlawn Solomon-ET D-Keystone O Kaliber Alyssa	Ella Hlavaty and Luke Seipt Lititz PA
3181 Lanormande Highoctane Lilly	12/02/2017		S-Stantons High Octane D-Frohland Lilly Echo Jordan	Westcoast Holsteins Chilliwack BC
3182 Mish-Ro Aftershock Shay	12/02/2017		S-Ms Atlees Sht Aftershock-ET D-Mish-Ro Doorman Spirit Rae	Ryan Goedken Earlville IA
3183 Ms Roll-N-View Jacoby Dream	12/02/2017		S-Cycle Doorman Jacoby-ET D-Ms Rnview Dream Keeper-ET	Kinsey Maes Lebanon PA
3184 Pfaffsway Defiant Jen A	12/02/2017	B&O	S-Scientific B Defiant-ET D-Pfaffsway Absolute J	Kole & Beau Trapp, Olivia Pfaff and Fred Ullom Taylor WI
3185 Andreane Avalanche Alana-ET	12/01/2017		S-Dymentholm Mr Apples Avalanche D-Pierstein Doorman Alanis-ET	Matthew Pacheco Kerman CA
3186 Desperle Shanie Gold Chip	12/01/2017		S-Mr Chassity Gold Chip-ET D-Desperle Shanti G W Atwood	Kylie Osinga Hico TX
3187 Eastriver Dempsey Coralie 556 D-05-00 305 13,431 4.8% 640 3.2%P 428P	12/01/2017		S-Lirr Drew Dempsey D-Eastriver Wh Coralie 106	Glamourview-lager & Walton Walkersville MD
3188 Geno Doorman Tesla D-06-02 305 27,293 3.9% 1,076 3.3%P 836P 313 27,756 4.0% 1,096 3.3%P 915P	12/01/2017		S-Val-Bisson Doorman D-Ernest-Anthony Testify-ET	Ferme Cerpolaït St-Louis QC
3189 Maiz-N-Blu Db Lilly-ET	12/01/2017		S-Mr D Apple Diamondback D-Ms Atwood Lacey-ET	Kristopher Ackley and Durham Meyer East Liberty OH
3190 Mcwilliams Attic Delight	12/01/2017		S-Allyndale-I Attic-ET D-Welkcrest W Brax Dazzle-ET	Doeberienner, Conroy, Burdette, Bowen West Salem OH
3191 Ocean-View Got The Z Factor 06-03 305 42,500 4.8% 2,034 3.0%P 1,289P	12/01/2017	B&O	S-Val-Bisson Doorman-ET D-Ocean-View Atwood Zandra	Ocean View Genetics Deerfield WI

3192 RJohn Prestige Champion	12/01/2017	S-Val-Bisson Doorman-ET D-Silvermaple Windham Camille-ET	Dawson Nickels, Madison & Melanie Sarbacker Watertown WI
3193 Sun-Made Crave Drn Diane-ET	12/01/2017	S-Val-Bisson Doorman-ET D-Comestar Larion Goldwyn-ET	Crave Brothers Farm LLC Waterloo WI
3194 TS Dorman Arri-ET	12/01/2017	S-Val-Bisson Doorman-ET D-Me-Do-Mb Durham Adeen	Mallory Nifong Orfordville WI
3195 Westcoast Avalanche Geneva	12/01/2017 B&O	S-Dymenthalm Mr Apples Avalanche D-Flower-Brook Geneva-Red-ET	Westcoast Holsteins Chilliwack BC
Class 707 Fall Heifer Calf			
Born 09/01/2017 - 11/30/2017			
Premiums: \$100, 95, 90, 85, 80, 75, 70, 65, 60, 55, 50, 40, 40, 40, 35, 35, 35, 30, 30, 30, 30, 25, 25, 20			
1st Place Award and Bred & Owned Award presented by International Protein Sires, Rock Springs, WI			
3196 Garay Doorman Bellamy	10/27/2017	S-Val-Bisson Doorman-ET D-Willowhaven Goldwyn Bliss	Lookout and Gerald Halbach Canton De Hatley QC
3197 Ernest-Anthony Tangerine-ET D-04-05 305 31,850 3.1% 976	10/13/2017 3.2%P 1,021P	S-Dymenthalm Mr App Avalanche-TW D-Ernest-Anthony Gs Teal-ET	Wolf & Heath New Bavaria OH
3198 Hornland Doorman Girl-ET	09/24/2017 B&O	S-Val-Bisson Doorman-ET D-Ms Opportunity Ginger-ET	Olivia & Kaden Horn Loyal WI
3199 Maple-Downs Immunity Jill	09/20/2017	S-Blondin Immunity-ET D-Maple-Downs Hammer Jill	Kelsey Campbell Middleburgh NY
3200 Holbric Ammo-P Ampule 04-07 305 29,409 3.9% 1,156 365 33,509 4.0% 1,314	09/15/2017 B&O 3.3%P 973P 3.3%P 1,127P	S-Mr Leaninghouse Ammo-P-ET D-Holbric Durham Adelle	Morgan Olbrich Harvard IL
3201 Milksource Believe-ET D-03-01 305 26,015 3.8% 993	09/15/2017 3.2%P 830P	S-Walnutlawn Solomon-ET D-Ehrhardt Gold Beauty-ET	Molly Olstad Stoughton WI
3202 Winright Atwood Kiss	09/15/2017 B&O	S-Maple-Downs-I G W Atwood-ET D-Winright Sid Elegance	Brian Joseph Enright Winchester ON
3203 Ransom-Rail Adhere Willow	09/14/2017	S-Willsbro K&L Adhere-ET D-Ransom-Rail Bradnick Sydnea	Mallory Rhodes Millport NY
3204 Garay Doorman Blind Date	09/09/2017	S-Val-Bisson Doorman-ET D-Willowhaven	Jm Valley , Fortale, Jp Proulx Amqui QC
3205 Arthurcreek Candy Crush-ET	09/08/2017	S-Maple-Downs-I G W Atwood-ET D-Arthurcreek Shottle Candy	Ian Adrian Lancaster WI
3206 Crazy-Chaos Byway Harmony	09/06/2017	S-Oh-River-Syc Byway-ET D-STJ-PV Doorman Harp-ET	Ben Johnson New Carlisle IN
3207 Rbcc-Xtreme V Solm Evilseye	09/06/2017 B&O	S-Walnutlawn Solomon-ET D-Rbcc-Xtreme V Sid-Evil	Rhett, Shanelle, Wyatt & Garett Borth Ellsworth WI
3208 Cerpolaite Peter Sunday D-01-11 305 21,310 4.2% 902 365 25,172 4.3% 1,071	09/05/2017 B&O 3.5%P 747P 3.5%P 891P	S-L-L-M Dairy Kingby Peter-ET D-Cerpolaite Doorman Summum	Ferme Cerpolaite St-Louis QC
3209 Luncrest Ambission-1924-ET	09/05/2017	S-Stantons High Octane D-Regancrest-GVH Arizona-ET	Triple-T Holsteins North Lewisburg OH

3210	Sunkist Mario Kiara	09/05/2017	B&O	S-Quality Doorman Mario-ET D-Sunkist Fever Era	Benjamin Donnay Glencoe, MN
3211	Miley Avalanche Genessee-ET	09/04/2017	B&O	S-Dymenthalm Mr Apples Avalanche D-Miley Advent B Gem-Red	Doebieriener, Bowen, Conroy, Miley Holsteins West Salem OH
3212	Ryan-Vu Doorman Risin Shine D-06-08 305 28,688 4.5% 1,294 3.0%P 852P	09/04/2017	B&O	S-Val-Bisson Doorman-ET D-Ryan-Geiger A Rising Star	Dylan & Cameron Ryan Fond Du Lac WI
3213	Duckett Dback Shiloh	09/03/2017		S-Mr D Apple Diamondback D-Duckett-Gk Dundee Skylar-ET	M, M, & M Price and C Cunningham Martinton IL
3214	Macland Rachels Ranaway	09/03/2017		S-Maple-Downs-I G W Atwood-ET D-Macland Rachels Runaway	Dusty & Nicole Schirm, Lourenco Pires & Joseph Osinga Ashville OH
3215	Oakfield-Bro Sirw Fickel-ET	09/03/2017		S-Mattenhoff Sirwood D-Penn-Gate Storm Fleurel-ET	Robert Fasbender Cornell WI
3216	Savage-Leigh Lalas First-ET	09/03/2017	B&O	S-Val-Bisson Doorman-ET D-Savage-Leigh Gold Lala-ET	Chase Savage Union Bridge MD
3217	T-Triple-T-Ent Primetime-ET D-06-09 305 41,463 4.8% 1,999 2.9%P 1,194P 365 48,457 4.9% 2,288 3.0%P 1,418P	09/03/2017	B&O	S-Val-Bisson Doorman-ET D-T-Triple-T-I Durham Poppi	Triple-T, Entourage-Lc & Tim Cummings North Lewisburg OH
3218	Zehrvue Aftershock Hi-Whey	09/03/2017	B&O	S-Ms Atlees Sht Aftershock-ET D-Zehrvue Absolt Hi-Time-Red	Rosalee Zehr Pontiac IL
3219	Cobequid Doorman Piper	09/02/2017		S-Val-Bisson Doorman-ET D-Cobequid Windhammer Panic-ET	Anna Moser Dansville MI
3220	Desperle Bunny Doorman	09/02/2017		S-Val-Bisson Doorman-ET D-Desperle Bonnie Duplex	Eaton, Clark Valley, Boulet Granville NY
3221	Gabz Defiant Reagan D-02-03 305 27,430 3.7% 1,023 3.2%P 869P 362 32,560 3.8% 1,198 3.2%P 1,006P	09/02/2017	B&O	S-Scientific B Defiant-ET D-Ms Smartys Regel-ET	Gabbie Gregorio Acampo CA
3222	Kampy Corvette Gretchen	09/02/2017		S-Sonnek GC Corvette-ET D-Bella-Ridge Game Over-ET	Aleah Farms, Kingsway Farms, Werrhurst Holsteins Beaverton ON
3223	Lakeshore Doorman Blaze-ET D-03-10 305 27,970 3.1% 859 3.2%P 883P	09/02/2017	B&O	S-Val-Bisson Doorman-ET D-River-Valley Barbara 4-ET	Taylor Powell Tremont IL
3224	OCD Defiant Lethal-ET	09/02/2017	B&O	S-Scientific B Defiant-ET D-Wilstar-Rs Tlt Limited-Red	Oakfield Corners Dairy Oakfield NY
3225	Ryan-Mvlo Solo Response-ET	09/02/2017		S-Walnutlawn Solomon-ET D-Ryan-Vu Regin Raz A Taz	Claire Betley Pulaski WI
3226	Wildpfaffs Luck Bea Lady-ET	09/02/2017	B&O	S-Stantons High Octane D-Pfaffsway Bltmr Lyrical-ET	Kole & Beau Trapp and Olivia Pfaff Taylor WI
3227	All-Glo Okool Tully	09/01/2017		S-Parrabel Rocks O'kool-Imp-ET D-Pennwood Dempsy Tamarack	Eaton Holsteins, Clarkvalley, Mt. Elgin Marietta NY
3228	Arthurcreek Kingboy Chill	09/01/2017		S-Morningview Mcc Kingboy D-Arthurcreek G Chip Coors	Brylie Volker Sumner IA

3229	Bevens-Creek Brasch Moola D-02-01 305 26,180 3.6% 951	09/01/2017	3.2%P 839P	S-Mr Brasch-ET D-Bevens-Creek Atwood Money	Justin, Daniel, Neveah, Emmet & Tyler Chupp Inola OK
3230	Crave Solomon Sophia-ET	09/01/2017	B&O	S-Walnutlawn Solomon-ET D-Crave Zenith Gracious 4449	Roseanne Crave Waterloo WI
3231	Etgen-Way Beemer Salantra	09/01/2017	B&O	S-Pol Butte Mc Beemer-ET D-Et-Gen-Way Sabathia Sassy	Cash & Henry Etgen and Greg Cornish North Fairfield OH
3232	Jacobs Gold Chip Version D-05-01 305 25,547 4.8% 1,219	09/01/2017	3.5%P 902P 365 29,811 4.9% 1,464 3.7%P 1,087P	S-Mr Chassity Gold Chip-ET D-Jacobs Atwood Vedette	Ferme Jacobs Cap-Sante QC
3233	Knonaudale Snylodge Jasmine	09/01/2017		S-Cycle Doorman Jacoby-ET D-Knonaudale Oshie	Makayla & Kaleb Osinga Hico TX
3234	Lehoux Control Fabuleuse	09/01/2017		S-JK Eder-I Control-ET D-Pierstein Dempsey Fabs	Doeberienner, Bowen, Conroy West Salem OH
3235	Milksource Dempsey Amour D-02-00 274 26,534 3.1% 811	09/01/2017	3.3%P 873P	S-Lirr Drew Dempsey D-Milksource Cvtt Ambition-ET	MilkSource Genetics, LLC Kaukauna WI
3236	Ms Allison's Mchammer Ariel	09/01/2017		S-Budjon-Vail Mc Hammer D-Errolea Pts Allison	Arnie, Ashley & Andy Gruenes Richmond MN
3237	Petitclerc Solomon Tropic	09/01/2017		S-Walnutlawn Solomon-ET D-Pierstein Windbrook Tibout-ET	N Bilz, K Chambers & K Schachelmayer Dorchester WI
3238	R-E-W So Lois	09/01/2017	B&O	S-Walnutlawn Solomon-ET D-R-E-W De Likely	Michael R Wolf Lebanon CT
3239	Reyncrest Byway Letty-ET	09/01/2017	B&O	S-Oh-River-Syc Byway-ET D-Reyncrest Alexndr Lavish-ET	Andrew Reynolds Corfu NY
Class 708 Summer Yearling Heifer					
Born 06/01/2017 - 08/31/2017					
Premiums: \$100, 95, 90, 85, 80, 75, 70, 65, 60, 55, 50, 40, 40, 40, 35, 35, 35, 30, 30, 30, 30, 25, 25, 20					
1st Place Award and Bred & Owned Award presented by International Protein Sires, Rock Springs, WI					
3240	Hardscrabble 1st Grade Glem	08/10/2017	B&O	S-Farnear-Bh 1st Grade-ET D-Hardscrabble Wood Glemz	Hardscrabble Farms Jim Falls WI
3241	Maple-Downs-PV Drman Gavina	07/23/2017	B&O	S-Val-Bisson Doorman-ET D-Maple-Downs-Al Chip Galina	Maple Downs Farms II & Peter Vail Middleburgh NY
3242	Cow-Palace Diamond Hazel	07/17/2017	B&O	S-Mr D Apple Diamondback D-Walk-Era Gchip Hailey	San-Ron Holsteins Sheboygan WI
3243	Lakeshore Solomon Emore	07/01/2017	B&O	S-Walnutlawn Solomon-ET D-Lakeshore Atwood Emily-ET	Justin Powell Tremont IL
3244	Miss Petitclerc Serena	06/29/2017		S-Walnutlawn Solomon-ET D-Petitclerc Mccutchen Sky	Graisson Schmidt, Garrett Schmidt, Ronald Deboer Riverdale CA
3245	Golden-Oaks Dback Adara-ET D-05-09 211 21,200 4.6% 971	06/25/2017	3.3%P 698P	S-Mr D Apple Diamondback D-Kingsway Goldwyn Artichoke-ET	Golden Oaks Farm Wauconda IL

3246	Rosedale MB Lucky Lady	06/22/2017	B&O	S-Dymenthalm Mr Apples Avalanche D-Rosedale Achieverslegacy-ET	Rosedale Genetics and F & D Borba Oxford WI
3247	Grace Crush Elegance	06/20/2017		S-Maverick Crush D-Grace Palermo Ecstasy	Mikayla Knorn Casco WI
3248	B-J-Grove Doorman Maddie-ET D-02-06 305 23,983 4.2% 996	06/14/2017	B&O	S-Val-Bisson Doorman-ET D-B-J-Grove Sammy Mandy	Kasey Clanton Mulberry Grove IL
3249	Lida-Acres Solomon Taylor	06/13/2017	B&O	S-Walnutlawn Solomon-ET D-Lida-Acres Lookin 4 Trouble	Dana Johnson Pelican Rapids MN
3250	Coredale Diamondback Ivy-ET	06/11/2017		S-Mr D Apple Diamondback D-Coredale Denison Icey	Glamourview-lager & Walton Walkersville MD
3251	B-J-Grove GC Jizzy Jew D-02-00 305 19,462 4.2% 820	06/09/2017	B&O	S-Mr Chassity Gold Chip-ET D-B-J-Grove Careyprice Jigs	Kasey Clanton Mulberry Grove IL
3252	Comstar Larion Control-ET D-03-10 305 33,650 3.4% 1,150	06/05/2017		S-JK Eder-I Control-ET D-Comstar Laria Goldwyn	C & J Hill, C Umbrel, M Hawbaker, and Bulldog Hol Thurmont MD
3253	Liddleholme Dback Thunder	06/05/2017		S-Mr D Apple Diamondback D-Liddleholme Thunder	Alexis C Papageorge Farr West UT
3254	Luncrest Kenosha Whack 1892	06/05/2017		S-Larcrest Kenosha 2515-ET D-Luncrest Gdsn Wandr-1470-ET	Madison Borchardt Edgar WI
3255	Milksource Taelyn-ET	06/05/2017	B&O	S-Mr Apples Armani-ET D-Strans-Jen-D Tequila-Red-ET	MilkSource Genetics, LLC Kaukauna WI
3256	Shadynook Expander Rayna	06/05/2017		S-Stantons Expander D-Shadynook Hill Raylene	Kole & Beau Trapp Taylor WI
3257	Milksource Diamond Sofia	06/04/2017		S-Mr D Apple Diamondback D-Blondin Seisme A-Red-ETN	Joseph, Tammy & Megan Kirchner Memphis MO
3258	Ocd Solomon Bobo-ET	06/04/2017	B&O	S-Walnutlawn Solomon-ET D-Locust-Ridge Plaid Beanie	Oakfield Corners Dairy Oakfield NY
3259	Heart & Soul JK DBack Gypsy	06/03/2017	B&O	S-Mr D Apple Diamondback D-Heart & Soul JK Braxton Genie	Matthew Boop Millmont PA
3260	Miss Solomon Horizon	06/03/2017		S-Walnutlawn Solomon-ET D-Miss Reginald Harper	Kyle Barton Litchfield CT
3261	Ms Milksource Drman Emma-ET D-01-11 305 23,330 3.9% 914	06/03/2017		S-Val-Bisson Doorman D-Nova-Tmj Atwood Estra	Golden Oaks Farm Wauconda IL
3262	Apple-Pts Almeta-ET D-09-01 305 31,120 4.3% 1,324	06/02/2017		S-Walnutlawn Solomon-ET D-Khw Regiment Apple-Red-ET	Golden Oaks Farm Wauconda IL
3263	Blondin Solomon Havana-ET	06/02/2017		S-Walnutlawn Solomon-ET D-Hazels Sid Harriet-ET	M, M & M Price and A & B Ekovich Martinton IL
3264	Crowleyview Doorman Luxi	06/02/2017		S-Val-Bisson Doorman-ET D-Bella-Ridge Luxor-ET	J, L & M Harbaugh and A & A Loehr Marion WI
3265	JM Valley Dempsey Lyzara D-03-02 305 26,122 4.3% 1,113	06/02/2017	B&O	S-Lirr Drew Dempsey D-Idee Windbrook Lynzi	R&s Allyn F&d Borba Jm Valley S Gendreau Canaan CT

3266	Midas-Touch Beem Candor-ET	06/02/2017	B&O	S-Pol Butte Mc Beemer-ET D-Regancrest Chanel	Jennifer King Waddington NY
3267	Ms Castleholm Pep Alma	06/02/2017		S-Windy-Knoll-View Pep-Red-ET D-Castleholm Radiant Alibi-ET	Tom-Kins Farm LLC Edgar WI
3268	Ms Klinedell Bwy Marilyn-ET	06/02/2017	B&O	S-Oh-River-Syc Byway-ET D-Joy-Wil Dundee Millie-ET	Jacob Kline Myerstown PA
3269	Oakfield Blake Luxuriant-ET	06/02/2017		S-Walnutlawn Solomon-ET D-Cowtown Durham Luella-ET	Doeberiner, Bowen and Schilling West Salem OH
3270	Go-Sho Doorman Remedie	06/01/2017	B&O	S-Val-Bisson Doorman-ET D-Zehr-Go-Sho A Ridiculous 1	Tessa VL & Stella RB Schmocker Whitewater WI
3271	Karolstein Lilastruck 1stgrade	06/01/2017		S-Farnear-Bh 1st Grade-ET D-Vogue Beemer Awestruck	Westcoast Holsteins Chilliwick BC
3272	Oakfield Blake Luxurious-ET D-06-07 305 29,980 3.4% 1,029 3.1%P 944P	06/01/2017		S-Walnutlawn Blake-ET D-Cowtown Durham Luella-ET	Carter Liette New Bavaria OH
3273	Petitclerc Solomn Ashlyn-ET	06/01/2017		S-Walnutlawn Solomon-ET D-Petitclerc Dundee Amistie-ET	Brandon Almeida Hilmar CA
3274	Steffes Diamondback Shadow	06/01/2017	B&O	S-Mr D Apple Diamondback D-Kara-Kesh-Rk Sapphire-Red	Darcy E. Steffes Elizabeth IL

Class 709 Spring Yearling Heifer

Born 03/01/2017 - 05/31/2017

Premiums: \$100, 95, 90, 85, 80, 75, 70, 65, 60, 55, 50, 40, 40, 40, 35, 35, 35, 30, 30, 30, 30, 25, 25, 20

1st Place Award presented by International Protein Sires, Rock Springs, WI

Bred & Owned Award presented by Illinois Holstein Association

3275	Ms Dempsey Renita D-03-02 305 25,583 4.3% 1,107 3.4%P 860P	05/10/2017	B&O	S-Lirr Drew Dempsey D-Heatherstone Redhot-Red	MilkSource Genetics, LLC Kaukauna WI
3276	Jacobs Solomon Bridal D-06-01 305 38,162 4.0% 1,517 3.1%P 1,166P 352 41,446 4.0% 1,675 3.1%P 1,299P	04/08/2017	B&O	S-Walnutlawn Solomon D-Jacobs Goldwyn Britany	Ferne Jacobs Cap-Sante QC
3277	Ty-D Doorman Maxim	04/07/2017		S-Val-Bisson Doorman-ET D-Lexis Iota Maabell	Eaton Holsteins, Clarkvalley, Mt. Elgin Marietta NY
3278	Heatherstone High Class D-04-02 305 31,010 3.8% 1,175 3.0%P 937P 361 33,630 3.8% 1,274 3.1%P 1,032P	04/06/2017	B&O	S-Maverick Crush D-Heatherstone Classy-ET	Heatherstone Enterprises, Inc. Baraboo WI
3279	Juniper Sid Always Lookin	03/31/2017		S-Pine-Tree Sid-ET D-Jacobs Goldwyn Abile	Derek Liddle Argyle NY
3280	Bluff-Ridge Sid Jelly	03/27/2017	B&O	S-Pine-Tree Sid-ET D-Bluff-Ridge Goldwyn Jazzy	Sarah Butler Arrowsmith IL
3281	Sherona-Hill Ravish D-03-11 305 28,247 3.7% 1,005 3.5%P 987P 365 30,772 3.7% 1,116 3.5%P 1,073P	03/21/2017		S-Gem-Mark Stmatic Sanchez D-Ms Sherona-Hill Relish-ET	John L Marchand Trent SD
3282	Ms Pfaffsway Bm Getyourgoat	03/11/2017	B&O	S-Pol Butte Mc Beemer-ET D-Pfaffsway-Kb Go For Glory	Kole & Beau Trapp and Olivia Pfaff Taylor WI

3283	Petitclerc Doorman Sapphire-ET	03/11/2017		S-Val-Bisson Doorman-ET D-Petitclerc Goldwyn Spady	Grant Vosters Freedom WI			
3284	Siemers Blake Glandeur-ET	03/06/2017	B&O	S-Walnutlawn Blake-ET D-Dubosson Forteresse Glauco	Jake, Connor & Lauren Siemers Newton WI			
3285	Siemers Blake Glaucina-ET	03/06/2017		S-Walnutlawn Blake-ET D-Dubosson Forteresse Glauco	Arnie, Ashley & Andy Gruenes Richmond MN			
3286	Cranehill Dback Chloe-ET	03/05/2017	B&O	S-Mr D Apple Diamondback D-Golden-Oaks Atwood Chloe-Et Ex-9 Hilmar CA	Cranehill Genetics			
3287	Sahara Beemer Reese	03/05/2017		S-Pol Butte Mc Beemer-ET D-Butlerview Door Rainy-ET	Dymenthalm Genetics & Devans Holsteins Dundas ON			
	D-02-02	305	24,572	4.7%	1,162	3.5%P	840P	
		342	27,117	4.8%	1,307	3.5%P	959P	
3288	Ahd Doorman Silk	03/04/2017		S-Val-Bisson Doorman-ET D-Arrowhead Epic Zoloff-ET	Glamourview-lager & Walton Walkersville MD			
	D-03-01	305	11,258	3.6%	404	3.1%P	353P	
3289	Oakfield Solomon Dandy-ET	03/04/2017	B&O	S-Walnutlawn Solomon-ET D-Woodlawn Dundee Daphne-ET	Jonathan & Alicia Lamb Oakfield NY			
3290	Ms Stookeyholm D-Back Sugar	03/03/2017	B&O	S-Mr D Apple Diamondback D-Ms Stookeyholm Goden Sugar	Korey Oechsle & Hayden Stookey Van Wert OH			
3291	Plum-Line Extra Naughty	03/03/2017	B&O	S-Blondin Lotus-ET D-Rolling-Spring Sid Ellen-ET	Brooke & John Carey Titusville PA			
3292	Prestige-Gen All The Way	03/03/2017		S-Pol Butte Mc Beemer-ET D-Prestige-Gen Gc Anthem-ET	Ben Johnson New Carlisle IN			
3293	Ran-Can Alonzo Cliche-ET	03/03/2017	B&O	S-Norca Silky Alonzo-ET D-Ran-Can Alexander Clair-ET	C&J Hill, T&S Merwarth, G Nell, and F Connelly Thurmont MD			
3294	Bella-Ridge Beauty Queen	03/02/2017	B&O	S-Val-Bisson Doorman-ET D-Bella-Ridge Black Beauty	J, L & M Harbaugh and A & A Loehr Marion WI			
3295	Garay Solomon Alix	03/02/2017		S-Walnutlawn Solomon-ET D-Garay Goldchip Allanis	Triple-T, M Heath, F&D Borba and Lookout Hols North Lewisburg OH			
3296	Heart & Soul JK Solmn Glitter	03/02/2017	B&O	S-Walnutlawn Solomon-ET D-J&K-Vue Goldwyn Glamour-ET	Matthew Boop Millmont PA			
3297	Ryan-Vu Goldwyn Ravish	03/02/2017	B&O	S-Braedale Goldwyn D-Ryan-Geiger Durham Radiant	Doeberiener, Bowen, C & A Ryan, Schilling West Salem OH			
3298	Stranshome Dempsey Tanielle	03/02/2017	B&O	S-Lirr Drew Dempsey D-Ms Stranshome Top It Off-ET	Joseph, Zach, Jerome & Darian Stransky Owatonna MN			
3299	Ttriple-Ent Dor Prize-ETS	03/02/2017	B&O	S-Val-Bisson Doorman-ET D-T-Triple-T-I Durham Poppi	Entourage-LC & Triple-T Holsteins North Lewisburg OH			
	D-06-09	305	41,463	4.8%	1,999	2.9%P	1,194P	
		365	48,457	4.8%	2,288	2.9%P	1,418P	
3300	Cerpolait Doorman Fantastic	03/01/2017	B&O	S-Val-Bisson Doorman D-Pierstein Atwood Fanatic	Ferme Cerpolait St-Louis QC			
	D-05-02	305	32,758	4.0%	1,301	3.0%P	996P	
		365	38,003	4.0%	1,510	3.1%P	1,173P	
3301	Ernest-Anthony Lily	03/01/2017		S-Mr Atwood Brokaw-ET D-Blondin Lanthority Libye-ET	Ndira Inc. Galt CA			

3302 Hillpine Doorman Asap-ET	03/01/2017	B&O	S-Val-Bisson Doorman-ET D-Butlerview Aftersh April-ET	Ryan Lauber Union Grove WI
3303 Lakeshore Sid Eva-ET D-04-00 305 31,370 3.8% 1,200 3.4%P 1,063P	03/01/2017	B&O	S-Pine-Tree Sid-ET D-Ludwigs-Dg Goldwyn Elite-ET	Justin Powell Tremont IL
3304 Midas-Touch Solomon Cher-ET	03/01/2017		S-Walnutlawn Solomon-ET D-Regancrest Chanel-ET	Jennifer King and Eaton Holsteins Waddington NY
3305 Ms Class Limited Edition	03/01/2017	B&O	S-Regancrest Reginald-ET D-Ms Lushous Lookout	Anna Moser Dansville MI
3306 Redline Royal	03/01/2017	B&O	S-Mr Hotstuffs Hypnotic-ET D-Redline Rose	Jacob C Maier Jim Falls WI
3307 Stookeyholm Sam Ridiculous 02-02 305 21,637 3.8% 832 2.8%P 612P	03/01/2017	B&O	S-Gen-I-Beq Sammy-ET D-Stookeyholm Gold Ribbon	Mallarie & Jordan Stookey Milford IN
3308 Winright Beemer Baby Enthem	03/01/2017	B&O	S-Pol Butte Mc Beemer-ET D-Budjon-Jk Wbrk Enthem	Brian Joseph Enright Winchester ON
Class 710 Winter Yearling Heifer (not in milk)				
Born 12/01/2016 - 02/28/2017				
Premiums: \$100, 95, 90, 85, 80, 75, 70, 65, 60, 55, 50, 40, 40, 40, 35, 35, 35, 30, 30, 30, 30, 25, 25, 20				
1st Place Award presented by International Protein Sires, Rock Springs, WI				
Bred & Owned Award presented by Ghost Hollow, Oologah, OK				
3099 Petittclerc Atwood Secret-ET	12/07/2016		S-Maple-Downs-I G W Atwood-ET D-Petittclerc Goldwyn Spady-ET	Eva Doornink and Jacob Harbaugh Baldwin WI
3309 Cocalico Goldwyn Morgan-ET	01/27/2017		S-Braedale Goldwyn D-Joy-Wil Dundee Mackenzie-ET	Doeberiener, Bowen and Heath West Salem OH
3310 Country Path Solo Perfume	01/17/2017	B&O	S-Walnutlawn Solomon-ET D-Country Path Joel Pippi	Jessica Nolt Hartley TX
3311 Sonnenbrook Dback Kendra-ET	12/24/2016	B&O	S-Mr D Apple Diamondback D-Sonnenbrook Pronto Kari	Ryan K & Kayla R Sonnenburg Belleville WI
3312 Savage-Leigh Gotta Look-ET	12/23/2016		S-Pine-Tree Sid-ET D-Savage-Leigh Gold Lona-ET	Doeberiener, Bowen, Conroy, Gunkleman West Salem OH
3313 Craigcrest Rubies Smarty Pants	12/19/2016		S-Braedale Goldwyn D-Montdale Dundee Rubie	Aspiration-Lyndon Stewart & Associates Inc Guelph ON
3314 Hillpine Rain Katcher-ET	12/19/2016	B&O	S-Rainyridge Barnie-ET D-Cleland Advent Korie-Red-ET	J, Z, J & D Stransky and M Lauber Owatonna MN
3315 Brush-Creek-Vu C Pretzel	12/17/2016		S-Maverick Crush D-Brush-Creek-Vu Sz Paisley	Andrew Blauser Oil City PA
3316 DJL Purepride Br Preachit-ET	12/15/2016		S-Butz-Bulter Atwood Brady-ET D-Hilrose Guthrie Peanut-ET	Kaylie Zapalac and Melissa Sprecher Arlington WI
3317 Ms Klinedell SIm Mozelle-ET	12/14/2016	B&O	S-Walnutlawn Solomon-ET D-Joy-Wil Dundee Millie-ET	Jacob Kline Myerstown PA
3318 Rob-Jo Doorman Embrace D-02-03 305 23,871 3.8% 908 2.9%P 699P	12/14/2016		S-Val-Bisson Doorman-ET D-Robjo Goldwyn Eve-ET	Richard & Shannon Allyn Canaan CT

3319	Quietcove Winning Ways-ET D-02-02 305 25,118 3.5% 874	12/13/2016	B&O 2.8%P 695P	S-De-Su BKM Mccutchen 1174-ET D-Quietcove-W Foxy Lady-ET	Quietcove Holsteins Wapakoneta OH
3320	Hilrose Solomon Pineapple	12/11/2016		S-Walnutlawn Solomon-ET D-Hilrose Braxton Patches	Olivia & Kaden Horn Loyal WI
3321	Brigeen Brash Paddy D-02-07 305 16,198 2.9% 477	12/09/2016	2.5%P 407P	S-Mr Brasch-ET D-Gladtime-Lal Fc Paddy	Glamourview-lager & Walton Walkersville MD
3322	Mcgk Goldwyn Leia	12/08/2016		S-Braedale Goldwyn D-Savage-Leigh Atwd Light-ET	Ryan & Briana Griswold Ixonia WI
3323	Toppklen Atwood Winner-ET	12/07/2016		S-Maple-Downs-I G W Atwood-ET D-Rose-Vue Damion Wooki	Brennan, Marissa and Logan Topp New Bremen OH
3324	Siemers Jacoby Hayasjoy-ET	12/06/2016	B&O	S-Cycle Doorman Jacoby-ET D-Siemers Dundee Haya 9652-ET	Jake, Connor & Lauren Siemers Newton WI
3325	Jm Valley Atwood Aly	12/04/2016	B&O	S-Maple-Downs-I G W Atwood-ET D-Paninou Shottle Annabelle	Jm Valley, Allyndale, Stephane Gendreau, Jp Proulx, Rodemsay Amqui QC
3326	Lorita Kingboy Holly	12/04/2016		S-Morningview Mcc Kingboy D-Lorita Corvette Holly-ET	Mitchell Coleman Hilmar CA
3327	Heart & Soul Gold Runway	12/03/2016	B&O	S-Mr Chassity Gold Chip-ET D-Heart & Soul Dempsey Roxstar	Matt Boop, Madison & F. Hayden Weaver Millmont PA
3328	Ms Klinedell Solo Mariah-ET D-03-05 305 30,460 3.4% 1,042	12/03/2016	2.8%P 883P	S-Walnutlawn Solomon-ET D-Joy-Wil Dundee Millie-ET	M & T Clark, J & D Chupp Inola OK
3329	Oakfield Door Raindrop-ET	12/03/2016		S-Val-Bisson Doorman-ET D-Craigcrest Rubies Rachelle	Mason Ziemba Durhamville NY
3330	Sabofarm Beemer Jasmine	12/03/2016	B&O	S-Pol Butte Mc Beemer-ET D-Sabofarm Cvette Jackie-ET	D & N Schmocker, R Sabo & Legendholm Holsteins Whitewater WI
3331	Al-Shar Sids Ginger Ale-ET D-02-00 305 14,665 3.9% 570	12/02/2016	3.3%P 486P	S-Walnutlawn Solomon-ET D-Edele Gin A Tonic	Jordan Zoellner Groton SD
3332	Budjon-Abbott Alexandra-ET	12/02/2016		S-Val-Bisson Doorman-ET D-Walk-Era Dundee Annelise	Kaelyn, Kenadee & Keegan Weigel Platteville WI
3333	Hatee Jacoby Paris	12/02/2016		S-Cycle Doorman Jacoby-ET D-Hatee Atwood Penelope	Alyson & Kenlee Philips Lingleville TX
3334	Md-Dun Loafin Dbk Excite-ET	12/02/2016		S-Mr D Apple Diamondback D-Ma-Tom-Ba Rubens Elly-ET	Kristopher Ackley, Kaiden & Zailey Conroy East Liberty OH
3335	Midas-Touch Dm Chinker-ET	12/02/2016		S-Val-Bisson Doorman-ET D-Regancrest Chanel-ET	Jessica Stempfle Maynard IA
3336	Ms Stookeyholm Tonys Secret 08-02 305 26,021 4.1% 1,067	12/02/2016	B&O 3.2%P 825P	S-Stookeyholm Dempsey Tony D-L-Beer CF Susie	Jesse W Beer and Jordon Stookey Milford IN
3337	Budjon-Abbott Dr Addidas-ET	12/01/2016		S-Val-Bisson Doorman-ET D-Walk-Era Dundee Annelise	Doeberiener, Bowen and Schilling West Salem OH

3338	Heatherstone Msindependent	12/01/2016	B&O	S-Oh-River-Syc Byway-ET	Chelsea Leigh Holschbach
	D-01-11 305 21,491 4.4% 864 3.4%P 675P			D-Heatherstone Mspersonality	Baraboo WI
	365 24,697 4.1% 1,017 3.2%P 789P				
3339	Highland-H Doorman Chimp-ET	12/01/2016		S-Val-Bisson Doorman-ET	Shelby Rader
				D-Highland-H Seaver Christy	Conneaut Lake PA
3340	MS Smith-Crest Avlnch Java	12/01/2016	B&O	S-Dymentholm Mr Apples Avalanche	Matthew & Kate Smith
	D-08-05 227 20,110 4.0% 797 2.8%P 567P			D-Dri-Land Tempting Jezabelle	Green Isle MN
3341	Winright Gold Chip Explosion	12/01/2016	B&O	S-Mr Chassity Gold Chip-ET	Brian Joseph Enright
				D-Budjon-Jk Wbrk Enthem	Winchester ON
Class 711 Fall Yearling Heifer (not in milk)					
Born 09/01/2016 - 11/30/2016					
Premiums: \$100, 95, 90, 85, 80, 75, 70, 65, 60, 55, 50, 40, 40, 40, 35, 35, 35, 30, 30, 30, 25, 25, 20					
1st Place Award presented by Double S Liquid Feed Services, Inc., Danville, IL					
Bred & Owned Award presented by International Protein Sires, Rock Springs, WI					
3342	Tombeth Ettakaw	10/27/2016	B&O	S-Mr Atwood Brokaw-ET	Sarah Kearns
				D-Tombeth Boxer Etta-Star	Gays Mills WI
3343	Kingsway Gold Chip Logic	10/03/2016		S-Mr Chassity Gold Chip-ET	Alyson & Kenlee Philips
				D-Kingsway Windbrook Loreine	Lingleville TX
3344	Milksource GD Dreams Kendra	10/01/2016		S-Heavenly Golden Dreams-ET	Joseph, Tammy & Megan Kirchner
				D-Macpes Fortune Koquine-ET	Memphis MO
3345	Ovaltop Sid Kracker	09/28/2016	B&O	S-Pine-Tree Sid-ET	Ashlyn C. Wolfe
	D-04-02 305 24,260 4.0% 965 3.1%P 744P			D-Ovaltop Atwood Krispy	Richfield Springs NY
	363 27,530 4.1% 1,128 3.1%P 856P				
3346	Mahoney Cinderdoor Leandra	09/27/2016	B&O	S-Kh Cinderdoor-ET	Keith & Kay Mahoney
				D-Mahoney Chelios Bianca	Cannon Falls MN
3347	Xcaret Gold Chip Aria	09/23/2016		S-Mr Chassity Gold Chip-ET	Glamourview-lager & Walton
	D-03-02 305 14,215 4.1% 582 3.3%P 467P			D-Xcaret Arguably The Best-ET	Walkersville MD
3348	Maple Downs Hypnotic Ali-ET	09/10/2016		S-Mr Hotstuffs Hypnotic-ET	Vogue Cattle Co, Silvercap and Maplewood
	D-02-04 305 29,443 3.4% 989 3.0%P 874P			D-Ms Atlees Gw Abracadabra-ET	Brighton ON
3349	Quietcove Doormn Flicker-ET	09/05/2016	B&O	S-Val-Bisson Doorman-ET	Quietcove Holsteins & Kurt Wolf
	D-03-07 305 24,260 3.6% 870 2.9%P 706P			D-Quietcove-W Gold Flower-ET	New Bavaria OH
3350	Ryan-Crest Hnotic Elisha-ET	09/04/2016		S-Mr Hotstuffs Hypnotic-ET	Ndira, Inc
				D-Ryan-Crest Sanz Extacy-ET	Fond Du Lac WI
3351	Marshland Airlift Hypocrite	09/03/2016	B&O	S-Canyon-Breeze At Airlift-ET	Marshland Farms Inc.
	D-02-02 305 26,240 3.6% 935 3.1%P 821P			D-Marshland Imp Hypnotic	Cushing WI
	347 29,455 3.6% 1,056 3.1%P 926P				
3352	Beckholm Doorman Trish	09/02/2016	B&O	S-Val-Bisson Doorman-ET	Terry Beckett
				D-Beckholm Goldwyn Trisha	Sunderland ON
3353	Hodgons Clark Pearl	09/02/2016		S-Dool-Leigh Goldwyn Clark-ET	Madelyn Topp
	D-02-04 37 1,969 3.5% 68 2.6%P 52P			D-Hodgons Brokaw Bentlty	Wapakoneta OH
3354	Budjon-Vail Drm Sunshine-ET	09/01/2016		S-Val-Bisson Doorman-ET	Trevor Tuman and Chandler Bening
	D-04-11 305 30,013 4.9% 1,455 3.7%P 1,597P			D-Petitclerc Sid Sunkiss	Arlington MN
	365 35,221 4.8% 1,707 3.5%P 1,247P				

3355 Luck-E Beemer Kandygirl	09/01/2016	S-Pol Butte Mc Beemer-ET D-Luck-E Sid Kandygirl	Addison & Jacob Raber Gridley IL
3356 Ms Cow-Palace Union Akira	09/01/2016 B&O	S-Our-Favorite Union 142-ET D-Exels Sanchez Alexandria-ET	Ken & Kathy Elliott and JT & Ronald Roskopf Sheboygan WI
3357 Oakfield Archrival Dina-ET	09/01/2016	S-Eclipse Atwoods Archrival-ET D-Woodlawn Dundee Daphne-ET	Delaware Valley College Of Science & Ag. Doylestown PA

Class 717 Junior Champion Female

Norman E. Magnussen Memorial Award presented by E-Zee Milking Equipment, LLC, McFarland, WI
Champion Banner presented by Select Sires, Inc., Plain City, OH
Rosette presented by GenOvations, Lodi, WI

Class 718 Reserve Junior Champion Female

Award presented by Genes Diffusion, Verona, WI
Reserve Champion Banner presented by Select Sires, Inc., Plain City, OH
Rosette presented by Rivendale Farms, Bulger, PA

Class 719 Junior Best Three Females

Fall Yearling Heifer (not in milk) and under. All must be bred by exhibitor and at least one animal must be owned (solely or in partnership) by the exhibitor. Breeder is identified as listed on the registration paper. Where animals are bred by different members of a family, and where the herd is one unit, they are considered as bred by one breeder. When animals are bred in partnership, each partnership is considered a unique breeder. Each exhibitor is limited to one entry. Entries in the group classes must be entered and shown in their individual classes.

Premiums: \$60, 40, 30, 20, 15

1st Place Award presented by Moondale Farm, the Dan Moon Family, Monona, IA

3358 Brian Joseph Enright
Winchester ON

3359 Budjon Farms & Tim & Sharyn Abbott
Lomira WI

3360 Budjon Farms and Peter & Lyn Vail
Lomira WI

3361 Dylan & Cameron Ryan
Fond Du Lac WI

3362 J M Valley Holstein
Amqui QC

3363 Jennifer King
Waddington NY

3364 Justin & Ashley Kaufman
Berlin PA

3365 Kole & Beau Trapp and Olivia Pfaff
Taylor WI

3366 Matthew Boop
Millmont PA

3367 MilkSource Genetics, LLC
Kaukauna WI

3368 Oakfield Corners Dairy
Oakfield NY

3369 Plum-Line Holsteins
Titusville PA

3370 Quietcove Holsteins
Wapakoneta OH

3371 Reyncrest Farm
Corfu NY

3372 Tim Hoese and Kate Heeren
Glencoe MN

Class **721 Premier Breeder of Heifer Show**
Royal Banner presented by Suneslope Farm, Madison, WI

Class **722 Premier Exhibitor of Heifer Show**
Royal Banner presented by Rivendale Farms, Bulger, PA

Class **723 Premier Sire of the Heifer Show**
Royal Banner presented by Rivendale Farms, Bulger, PA

Class **725 Yearling Heifer in Milk (must have freshened)**
Born 09/01/2016 - 12/31/2016
Premiums: \$120, 110, 100, 90, 85, 80, 75, 70, 65, 60
1st Place Award presented by Holstein Association USA, Inc.
Bred & Owned Award presented by Dane County Holstein Breeders, WI
Best Udder Rosette presented by Cattle Connection, Amery, WI

3373	Willows-Edge Atwood Infer	10/09/2016		S-Maple-Downs-I G W Atwood-ET	Brandon Vieth
	01-09 27 1,210 3.8% 46 3.0%P 36P			D-Willows-Edge Sanchez Intel	Cashton WI
3374	Wedgwood Avalanche Paradise	09/20/2016	B&O	S-Dymentholm Mr Apples Avalanche	Stanhope-Wedgwood
				D-Stanhope Presence Dempsey	Cobble Hill BC
3375	Westcoast Orion Aryane 4727	09/19/2016	B&O	S-Progenesis Orion	Westcoast Holsteins
				D-Ms Apple Aryane-ET	Chilliwack BC
3376	Milksource Gldndrm Asset-ET	09/18/2016		S-Heavenly Golden Dreams-ET	Westcoast Holsteins
				D-Weeks Dundee Anika	Chilliwack BC
3377	Berwen Avalanche Fantom	09/17/2016		S-Dymentholm Mr Apples Avalanche	Ferme Blondin
	D-02-00 177 12,372 4.6% 567 3.6%P 445P			D-Berwen Armani Farrah-Red	Saint-Placide QC
3378	Jacobs Dempsey Lady	09/14/2016	B&O	S-Lirr Drew Dempsey	Ferme Jacobs Inc & Colganados Genetics LLC
	D-05-11 305 36,603 3.4% 1,243 3.0%P 1,113P			D-Crasdale Dundee Liza	Cap-Sante QC
	331 38,799 3.5% 1,340 3.1%P 1,195P				
3379	Vandoskes Dback Carley-ET	09/13/2016		S-Mr D Apple Diamondback	Andrew Hetke, Eric Wetenkamp, and S & C
	D-03-03 305 23,880 4.6% 1,088 3.3%P 796P			D-Ocd Sid Caylee-ET	Holschbach Baraboo WI
3380	Ms Pg Pv Doorman Aspire-ET	09/12/2016		S-Val-Bisson Doorman-ET	Stephen & Patrick Maddox
	01-11 38 3,110 4.1% 128 3.5%P 110P			D-Ms Apples Uno Armana-ET	Riverdale CA
3381	Milksource Dmdbck Taekwondo	09/10/2016	B&O	S-Mr D Apple Diamondback	MilkSource Genetics, LLC
	D-05-05 305 32,943 4.5% 1,381 3.2%P 1,051P			D-Silvermine Adv Tally-Red-ET	Kaukauna WI
	365 38,700 4.2% 1,621 3.2%P 1,254P				

3382	Oakfield Solomon Lou-ET		09/10/2016	S-Walnutlawn Solomon-ET	Derek George	
	D-05-06	305 25,140	3.9% 968	3.3%P 841P	D-Cowtown Durham Luella-ET	Arcade NY
3383	Bonaccueil Ranta Goldwyn		09/07/2016	B&O S-Braedale Goldwyn	Yvon Sicard, Pierre Boulet and A&r Boulet	
	D-06-05	305 30,190	3.7% 1,124	3.2%P 979P	D-Bonaccueil Roset Pronto	St-Justin QC
		365 35,249	3.8% 1,321	3.3%P 1,155P		
3384	Hodglyn Beem Me Up		09/06/2016	B&O S-Pol Butte Mc Beemer	Hodglyn Holsteins	
	D-05-05	305 28,534	4.0% 1,140	3.3%P 928P	D-Ms Rollnvw Gold Delilah-ET	Kincardine ON
		365 32,507	4.1% 1,332	3.3%P 1,074P		
3385	Lellavan Avalanche Fuji		09/06/2016	S-Dymentholm Mr Apples Avalanche	B Almeida and F, C, A, L, J & H Borba	
	D-06-00	270 26,389	3.4% 893	2.9%P 754P	D-Lellavan Fever Fiji	Canton De Hatley QC
3386	Crave G W Atwood Peach-ET		09/05/2016	B&O S-Maple-Downs-I G W Atwood-ET	Roseanne Crave	
				D-Crave Dusk Penny 6262	Waterloo WI	
3387	Sherona-Hill Applesnack		09/03/2016	S-Gillette Windbrook	Timothy, Leah & Barbara Ziemba	
	02-00	4 240	3.3% 8	3.0%P 7P	D-Ms Applesauce	Cambridge WI
3388	Desperle Kerry Goldwyn		09/02/2016	B&O S-Braedale Goldwyn	Lookout , Ferme Laperle	
	D-07-03	305 27,959	3.7% 1,036	2.9%P 822P	D-Desperle Rosanie Sanchez	Canton De Hatley QC
3389	Sherona-Hill DB Arika		09/02/2016	S-Mr D Apple Diamondback	Frank & Carol Borba and Frank & Diane Borba	
				D-Butlerview A&W Ariel-ET	Escalon CA	
3390	Zbw Baileys Sid Belinda		09/02/2016	B&O S-Pine-Tree Sid-ET	B&K Ziemba and B&K Oster	
	01-11	22 1,550	3.8% 59	3.2%P 49P	D-Ms Brandys Gold Bailey	Durhamville NY
3391	Luck-E Avalanche Azoom-ET		09/01/2016	B&O S-Dymentholm Mr App Avalanche-TW	Matt Engel	
	D-06-02	305 35,180	5.0% 1,747	3.3%P 1,149P	D-Luck-E Advent Asia-ET	Hampshire IL
		365 40,150	4.9% 1,984	3.3%P 1,337P		
3392	Midas-Touch Av Cling-ET		09/01/2016	S-Dymentholm Mr Apples Avalanche	Westcoast Holsteins	
	01-09	75 6,082	5.9% 364	2.5%P 153P	D-Regancrest Chanel-ET	Chilliwack BC
3393	Ourway Absolute Belinda		09/01/2016	S-Apples Absolute-Red-ET	Dakota Brown	
	D-04-07	305 31,626	3.8% 1,219	3.1%P 998P	D-Macha Rejena Break	Brooklyn WI
3394	Poly-Kow Solomon Actress		09/01/2016	S-Walnutlawn Solomon-ET	Tim & Sharyn Abbott, Dusty & Nicole Schirm,	
	D-02-03	305 20,320	3.7% 751	3.1%P 628P	D-Velthuis Sg Mrdian Azure-ET	Declan Patten
					Enosburg VT	
3395	Pyramid Doorman Lyric-ET		09/01/2016	S-Val-Bisson Doorman-ET	Wade Yardley and Travis Smith	
	01-11	63 6,010	3.3% 217	2.9%P 176P	D-Donnanview Damion Lyza-ET	Watertown WI
3396	Reyncrest Doorman Denali-ET		09/01/2016	S-Val-Bisson Doorman-ET	Erin Harkenrider	
	D-06-05	305 39,020	3.6% 1,387	2.8%P 1,077P	D-Co-Vale Zenith Darla	Enosburg VT
		365 45,570	3.6% 1,640	2.8%P 1,288P		

Class **727 Junior Two-Year-Old Cow (must have freshened)**

Born 03/01/2016 - 08/31/2016

Premiums: \$200, 150, 145, 140, 135, 130, 125, 120, 115, 110, 100, 95, 85, 80, 75, 70, 65, 65, 60, 60

1st Place Award presented by Addison RC Syndicate, LLC, Brooklyn, IA

Bred & Owned Award presented by International Protein Sires, Rock Springs, WI

Best Udder Rosette presented by Cattle Connection, Amery, WI

3397	Best Nord Atwood Lolly	07/08/2016				S-Maple-Downs-I G W Atwood-ET	Yvon Sicard, Pierre Boulet, Mathieu Chartrand & Kelly Hardy
	D-03-02	305 27,668	3.5% 978	2.9%P	813P	D-Coutown Advent Lollipop-ET	Trois-Rivieres QC
		339 29,729	3.6% 1,069	3.0%P	891P		
3398	Mikelholm Mc Real Deal	07/08/2016	B&O			S-De-Su BKM McCutchen 1174-ET	Emily Mikel
	D-03-03	305 45,240	3.9% 1,780	2.5%P	1,140P	D-Mikelholm Windbrook Rory-ET	Stafford NY
		365 51,600	4.0% 2,074	2.6%P	1,331P		
3399	Roll-N-View Byway Lighting	07/06/2016	B&O			S-Oh-River-Syc Byway-ET	Allison Galton
						D-Savage-Leigh Absolute Light	Nunda NY
3400	ZBW M Light Beam	06/16/2016	B&O			S-Pol Butte Mc Beemer-ET	Mason Ziemba
	02-00	34 2,586	3.8% 99	3.0%P	77P	D-Ms Zbw Dempsey Louana	Durhamville NY
3401	Ms-Tora-Ranway Whiterose-ET	06/11/2016				S-Mr Chassity Gold Chip-ET	Alek T & Brooke S Krueger
						D-Ocd Durham Rosalind-ET	Hazel Green WI
3402	Juniper Sid Chardonnay-ET	06/01/2016	B&O			S-Pine-Tree Sid-ET	Borderview Genetics-Tim & Sharyn Abbott and Juniper Elite Holsteins
	D-03-04	305 27,216	3.3% 906	3.3%P	899P	D-Howardview-WG Gold Casey-ET	Enosburg VT
3403	Midas-Touch Jedi Jangle-ET	04/05/2016				S-S-S-I Montross Jedi-ET	Eaton Holsteins, Clarkvalley, Mt. Elgin
						D-Seagull-Bay S Jillian-ET	Marietta NY
3404	Arethusa Awesome Astrid	03/24/2016	B&O			S-Luck-E Awesome-Red	Arethusa Farm LLC
	02-02	80 6,513	3.4% 222	2.6%P	172P	D-Arethusa Sid Astra	Litchfield CT
3405	Ken-Am Gc Snowbel	03/06/2016				S-Mr Chassity Gold Chip-ET	Borderview Genetics LLC-Tim & Sharyn Abbott
	02-03	62 5,890	3.6% 212	3.1%P	183P	D-Ms Snowflake Uno 2379-ET	Enosburg VT
3406	Floyholm MC Emoji-ET	03/04/2016				S-De-Su BKM Mccutchen 1174-ET	Shawn & Seth Nehls
	D-03-04	305 24,290	3.6% 863	3.1%P	748P	D-Budjon-JK Damion Eklipse-ET	Hustisford WI
3407	Fraeland Doorman Bonnie	03/04/2016				S-Val-Bisson Doorman-ET	Mike & Julie Duckett
	01-11	147 11,342	4.5% 511	3.0%P	342P	D-Fraeland Goldwyn Bonnie-ET	Rudolph WI
3408	Ar-Line Brady Alia-ET	03/03/2016				S-Butz-Bulter Atwood Brady-ET	T & L Ziemba, B Ziemba, Trickey Holsteins
	02-02	101 7,731	3.0% 234	2.5%P	200P	D-Erinwood Tal Andrea-ET	Cambridge WI
3409	Butlerview Anth Artful-ET	03/03/2016				S-Mr Doorman Anthius-ET	Clayton Arntz
						D-Kingsway Goldwyn Artichoke-ET	Cotati CA
3410	Heart & Soul JK Dempsey Glitz	03/03/2016	B&O			S-Lirr Drew Dempsey	Matthew Boop
						D-J&K-Vue Goldwyn Glamour-ET	Millmont PA
3411	Quietcove Foxys Lollipop-ET	03/03/2016	B&O			S-Eclipse Atwoods Archrival-ET	Quietcove Holsteins
	02-02	203 12,712	3.0% 355	2.9%P	341P	D-Quietcove-W Foxy Lady-ET	Wapakoneta OH
3412	Reyncrest Corvette Gracie	03/03/2016	B&O			S-Sonnek Gc Corvette-ET	Reyncrest Farm
	01-11	185 15,800	3.5% 550	3.0%P	526P	D-Guyview Goldwyn Giggles	Corfu NY

3413	Garay Awesome Beauty	03/02/2016	S-Luck-E Awesome-Red	Lookout, Gerald Halbach, Frank & Diane Borba
	02-00 124 21,003 3.2% 666 3.4%P 719P		D-Willowhaven Goldwyn Bliss	Canton De Hatley QC
3414	Holbric GW Atwood A-Grain	03/02/2016 B&O	S-Maple-Downs-I GW Atwood-ET	Elena Olbrich
	02-01 23 1,362 3.5% 48 3.2%P 43P		D-Holbric Mccutchen Asset	Harvard IL
3415	Tolamika Armani Will	03/02/2016	S-Ms Apples Armani-ET	Ferne Glauser Et Fils
	D-05-04 305 22,639 4.4% 988 3.5%P 791P		D-Westar Secure Wilma	Pike River QC
	333 23,913 4.5% 1,065 3.5%P 847P			
3416	Bluff-Ridge BW Bunny	03/01/2016 B&O	S-Hylite Barbwire-Red-ET	Sarah Butler
	D-03-07 305 23,268 3.8% 888 3.2%P 754P		D-Bluff-Ridge Atwood Janet	Arrowsmith IL
3417	Duckett Gc Naomi	03/01/2016 B&O	S-Mr Chassity Gold Chip-ET	Mike & Julie Duckett
	02-03 57 4,073 3.8% 156 2.9%P 117P		D-Kaymanor Nibbles	Rudolph WI
3418	Maple-Downs-CC Blake Ella	03/01/2016 B&O	S-Walnutlawn Blake-ET	C. Countryman & Maple Downs Farm II
	02-01 100 6,008 4.2% 255 3.2%P 190P		D-Maple-Downs-CC AW Expo	Middleburgh NY
3419	Ms Miracles Mykindagiri-ET	03/01/2016	S-Val-Bisson Doorman-ET	Stephen & Patrick Maddox
	02-05 134 12,150 3.1% 377 2.9%P 361P		D-Ms Moniques Miracle-ET	Riverdale CA
3420	Quietcove Foxys Jalepeno-ET	03/01/2016	S-Val-Bisson Doorman-ET	Doeberiner, Bowen, Conroy
			D-Quietcove-W Foxy Lady-ET	West Salem OH
3421	Welsh-Edge DM Highbonlife-ET	03/01/2016 B&O	S-Val-Bisson Doorman-ET	David & Hope Petersheim
			D-Welsh-Edge Atwood Hawaii	Viroqua WI

Class 728 Senior Two-Year-Old Cow (must have freshened)

Born 09/01/2015 - 02/29/2016

Premiums: \$200, 150, 145, 140, 135, 130, 125, 120, 115, 110, 100, 95, 85, 80, 75, 70, 65, 65, 60, 60

1st Place Award presented by PortaCheck, Inc., Moorestown, NJ

Bred & Owned Award presented by Ghost Hollow, Oologah, OK

Production Award presented by Prairie Farms, Edwardsville, IL

Best Udder Rosette presented by Cattle Connection, Amery, WI

3422	Duckett Doorman Giselle-ET	01/20/2016 B&O	S-Val-Bisson Doorman-ET	Mike & Julie Duckett
	02-01 149 10,241 5.8% 597 3.1%P 315P		D-Laidlawn Sanchez Gemini	Rudolph WI
3423	Meitime Chops Tara	01/15/2016 B&O	S-Eildon-Tweed Chops-ET	Robert L Meier
	02-04 80 85 3.8% 254 2.8%P 189P		D-Sugar-Breeze Uno Tate-ET	Belleville WI
3424	Butlerview Arch Cani-ET	01/13/2016	S-Eclipse Atwoods Archrival-ET	Clayton Arntz
			D-Silvermaple Damion Camomile	Cotati CA
3425	Laforstar Voltige Defiant	01/06/2016	S-Scientific B Defiant-ET	Michael Paris & Jocelyn Côté
	D-02-08 305 18,644 3.9% 719 3.4%P 642P		D-Mibelson Volka Absolute	St-Christophe D'arthabasca QC
	363 21,634 3.9% 838 3.5%P 763P			
3426	Bernadale Goldwyn Indigo	01/01/2016	S-Braedale Goldwyn	Michael Paris & Jocelyn Côté
	D-03-05 294 29,185 3.8% 1,113 3.2%P 941P		D-Cobequid Bel Dolman Indigo	St-Christophe D'arthabasca QC
3427	Lesperron High Octane Demi	12/23/2015	S-Stantons High Octane	Ferne Glauser Et Fils
	D-03-05 287 31,367 3.5% 1,098 3.0%P 930P		D-Lesperron Fever Demie	Pike River QC
3428	PA-JA-MA Defiant Flick	12/18/2015	S-Scientific B Defiant-ET	Schwendemann Farms
	02-02 155 11,510 3.5% 404 2.6%P 296P		D-PA-JA-MA Fever Flair	Hartford WI
3429	Wedgwood Hi O Paula	12/16/2015 B&O	S-Stantons High Octane	Stanhope-Wedgwood
			D-Wedgwood Pepper Jasper	Cobble Hill BC

3430 Ludwigs-DG Evie-ET		12/10/2015	S-Val-Bisson Doorman-ET	Majestic View Genetics, Lintredt, R. Connery, R. Shore
03-03	70 5,789 5.3% 1,808 3.2%P 1,195P		D-Ludwigs-DG Goldwyn Ember-ET	Sun Prairie WI
3431 Rocklan-Zbw Defnt Paige-ET		12/10/2015	S-Scientific B Defiant-ET	Jonathan & Alicia Lamb
02-01	225 14,300 3.6% 519 3.1%P 438P		D-Ms-Srp Absolute Pro-Red-ET	Oakfield NY
3432 Zehrview Rainy Silver		12/10/2015 B&O	S-Rainyridge Bernie-ET	Rosalee & Wyatt Zehr
02-05	50 3,645 3.1% 136 3.7%P 114P		D-Zehrview Absolute Salty-ET	Graymont IL
3433 Sco-Lo-Af Sid Sangria-ET		12/09/2015	S-Pine-Tree Sid-ET	James Ostrom & John M Vosters
02-02	110 9,141 4.4% 398 3.0%P 270P		D-Beckholm Goldwyn Suzette	Kaukauna WI
3434 Spungold Airlift Netty		12/02/2015	S-Canyon-Breeze At Airlift-ET	Peter & Lyn Vail
02-05	75 5,861 3.9% 233 2.8%P 168P		D-Spungold Windbrook Nicki	Englewood FL
3435 Pappys Doorman Rose-ET		12/01/2015 B&O	S-Val-Bisson Doorman-ET	Alexis C Papageorge
			D-Pappys Redliner Rosa	Farr West UT
3436 Pleasant Nook Doorman Madison-ET		12/01/2015 B&O	S-Val-Bisson Doorman-ET	Pleasant Nook Farms, Genvue Holsteins, J & P Black, Malden Valley Farms, Ltd
			D-Ms Atwood Madison-ET	Ayr ON
3437 Milgene Defyin Jackolantern		10/24/2015 B&O	S-Scientific B Defiant-ET	Hildebrandt Family Farms LLC
02-05	130 10,014 3.3% 335 2.9%P 287P		D-Milgene Big Red Jezolantern	Hustisford WI
3438 Buells Brokaw Camie		10/19/2015 B&O	S-Mr Atwood Brokaw-ET	Skylar Buell
			D-Buells Yance Camaro	Temperance MI
3439 Jacobs Doorman Victoire		10/05/2015 B&O	S-Val-Bisson Doorman-ET	Ferme Jacobs and Ferme Premium
			D-Jacobs Goldwyn Voltige	Cap-Sante QC
3440 Lida-Acres Wood Andrea		10/04/2015 B&O	S-Pine-Shelter Clay Wood-ET	Dana Johnson
			D-Lida-Acres Durham Andi-ET	Pelican Rapids MN
3441 Ruann Doorman Jean-55162-ET		09/29/2015 B&O	S-Val-Bisson Doorman-ET	Stephen & Patrick Maddox
02-11	203 22,790 3.3% 767 3.1%P 723P		D-Ruann Sidney Jean-85880-ET	Riverdale CA
3442 Ms Milksource RI Krystal-ET		09/23/2015	S-Eclipse Atwoods Archrival-ET	Tristen Hans Ostrom
D-07-09	305 26,994 4.0% 1,069 3.1%P 847P		D-Lovhill Goldwyn Katrysha-ET	Kaukauna WI
	365 31,846 4.1% 1,302 3.2%P 1,015P			
3443 Kentville Blake Genevieve		09/18/2015	S-Walnutlawn Blake-ET	Tim, Barb & Kyle Natzke
01-11	289 18,826 4.7% 851 3.1%P 574P		D-Hi-Hope Sid Genny-ET	Fond Du Lac WI
3444 Mabel Doorman Divou		09/13/2015	S-Val-Bisson Doorman	Ferme Blondin
02-00	263 20,662 4.1% 853 3.3%P 681P		D-Mabel Fever Divoula	Saint-Placide QC
3445 Ms Smith-Oak Pw D Maggie-ET		09/11/2015	S-Val-Bisson Doorman-ET	Eaton Holsteins, Clarkvalley, Mt. Elgin
			D-Smith-Oak Glwyn Mint-ET	Marietta NY
3446 Damestar Doorman Brandy		09/09/2015	S-Val-Bisson Doorman	Ferme Jacobs
D-05-01	305 29,540 4.0% 1,184 3.0%P 895P		D-Damestar Goldwyn Brady	Cap-Sante QC
	365 32,924 4.0% 1,332 3.1%P 1,016P			
3447 Ms Beautys Black Velvet-ET		09/08/2015 B&O	S-Braedale Goldwyn	Triple-T and Tim Cummings
02-06	162 14,927 4.7% 702 2.9%P 445P		D-Ms Exels Dundee Beauty	North Lewisburg OH

3448	Westcoast Doorman Cash 3444	09/08/2015	B&O	S-Val-Bisson Doorman-ET D-Ms Chassity Goldwyn Cash-ET	Westcoast Holsteins Chilliwack BC
3449	Kingsway Doorman Andrea 01-09 296 20,974 3.9% 823 3.1%P 655P	09/06/2015		S-Val-Bisson Doorman-ET D-Kingsway Sanchez Aragatang-ET	Glamourview-lager & Walton Walkersville MD
3450	Maple-Downs Edward Adora 01-09 305 21,353 3.6% 767 3.1%P 669P	09/02/2015	B&O	S-Mr Maple-Downs Wh Edward D-Tillapyke W Brook Aliyah-ET	Jason D. Lloyd Middleburgh NY
3451	Ms Apple Anastasia-Red-ET 01-10 305 22,789 4.7% 1,071 3.1%P 706P	09/02/2015		S-Scientific B Defiant-ET D-KHW Regiment Apple-Red-ET	Alphie G Stoltzfus Gap PA
3452	Morsan Doorman Missy 3362 02-03 243 23,792 4.2% 992 3.3%P 791P	09/01/2015		S-Val-Bisson Doorman-ET D-Eastside Lewisdale Gold Missy	Westcoast Holsteins and Quebequa Holsteins Chilliwack BC
Class 732 Junior Three-Year-Old Cow					
Born 03/01/2015 - 08/31/2015					
Premiums: \$200, 150, 145, 140, 135, 130, 125, 120, 115, 110, 100, 95, 85, 80, 75, 70, 65, 60, 60					
1st Place Award presented by Locust-Vista Registered Holsteins, Steven Fronk, Rice Lake, WI					
Bred & Owned Award presented by International Protein Sires, Rock Springs, WI					
Production Award presented by Prairie Farms, Edwardsville, IL					
Best Udder Rosette presented by Cattle Connection, Amery, WI					
3453	Ms Elmvue Doorman Sasha 03-01 64 5,635 3.8% 213 3.0%P 169P	07/26/2015	B&O	S-Val-Bisson Doorman-ET D-Misty Springs Lauvy Splendid	Elmvue Farm Johnstown NY
3454	Roll N View Def Bojangles	07/22/2015	B&O	S-Scientific B Defiant-ET D-Roll N View Extrme Brita-ET	Cooper Galton Nunda NY
3455	Ms Sid Leap Frog 03-02 76 5,764 4.2% 216 3.0%P 164P	06/15/2015		S-Pine-Tree Sid-ET D-Ocd Shadow Leap Of Faith	Kade Meyer Postville IA
3456	Willows Edge Glauco Leisure 01-10 305 23,400 4.5% 1,056 3.2%P 746P 365 27,279 4.5% 1,238 3.2%P 873P	06/12/2015	B&O	S-Toc-Farm Duplex Glauco D-Bry-Ka Talent Laureen	Bonnie Van Dyk New Richmond WI
3457	Denn-Mar Atwood Sarah 02-01 348 20,304 4.6% 925 3.1%P 629P	06/06/2015	B&O	S-Maple-Downs-I G W Atwood-ET D-Denn-Mar Acme Sierra-Red	Denn-Mar Farm Rice MN
*3458	Butlerview Door Aleah	06/03/2015		S-Val-Bisson Doorman-ET D-BVK Atwood Abrianna-ET	Christian Cunningham Penngrove CA
3459	Elmvue Mccutchen Chase 03-02 104 9,206 3.6% 328 2.8%P 261P	06/02/2015	B&O	S-De-Su BKM Mccutchen 1174-ET D-Elmvue Fever Cayenne	Elmvue Farm Johnstown NY
3460	Ms Hodglyn Brkw Bonus	06/02/2015		S-Mr Atwood Brokaw-ET D-Cavanaleck Bg Bruin	Majestic View Genetics, R Shore and R Connery Sun Prairie WI
3461	Mount Elm Goldchip Juicebox 02-11 302 15,596 4.4% 686 3.1%P 478P	06/01/2015		S-Mr Chassity Gold Chip-ET D-Mount Elm Kite Jawbreaker	Hodglyn Holsteins and Beckholm Holsteins Kincardine ON
3462	Team O Kaliber Mallorie 02-03 254 19,074 4.6% 881 3.1%P 584P	06/01/2015	B&O	S-GS Alliance O Kaliber D-Team Windbrook Maui	Ryan Lauber, Team Holsteins & Ben Wallace Union Grove WI
3463	Ransom-Rail Doorman Alora 02-02 305 17,676 4.4% 734 3.7%P 654P 316 18,270 4.4% 810 3.7%P 678P	04/21/2015	B&O	S-Val-Bisson Doorman-ET D-Annalea Goldwyn Alinda	Jacob & Jared Dueppengieser Perry NY
3464	Webb-Vue Goldchip 7725 01-10 305 33,683 4.0% 380 2.9%P 1,008P	04/12/2015		S-Mr Chassity Gold Chip-ET D-Webb-Vue Explode 6930	Regancrest Holsteins LLC Waukon IA

3465 Ms Mccutchen Delight		03/30/2015	B&O	S-De-Su BKM Mccutchen 1174-ET	Gilbert Teixeira, Frank & Diane Borba, & Leo & Chris Durrer Turlock CA
	02-02	305 25,200	3.6% 918	3.2%P 803P	
		341 27,770	3.6% 1,016	3.2%P 888P	D-Ms Deb Sid Delight-ET
3467 Ms Brazle Royal-ET		03/13/2015	B&O	S-Arrowstar Brazzle-Imp-ET D-Liddleholme Riches-ET	Brock, Adam and Anthony Liddle Argyle NY
3468 Luck-E Powerball Addict-ET		03/12/2015		S-View-Home Powerball-P-ET D-Luck-E Advetn Asia-ET	Bradley & Amy Hoover and Boyd Schaufelberger Lebanon PA
	01-08	305 22,630	4.5% 1,023	3.1%P 712P	
3469 Hez Bo Atwood Ruth-ET		03/09/2015	B&O	S-Maple-Downs-I G W Atwood-ET D-Dubeau Dundee Hezbollah	Borderview Genetics LLC-Tim & Sharyn Abbott Enosburg VT
	02-10	136 13,892	4.4% 605	2.9%P 397P	
3470 Ms Listerines Look At Me-ET		03/07/2015		S-Maple-Downs-I G W Atwood-ET D-Ms Licorice Listerine-ET	Mike & Julie Duckett Rudolph WI
	01-10	305 22,623	3.8% 818	3.1%P 694P	
*3471 Biercrest Chelios Tanysha		03/06/2015		S-Domicole Chelios-ET D-Biercrest Seaver Tilissa	Zach & Ally Bierschenk Van Horne IA
	02-01	305 19,080	3.3% 629	3.2%P 610P	
3472 T-Triple-T Poker Chip-ET		03/04/2015	B&O	S-Mr Chassity Gold Chip-ET D-T-Triple-T Dundee Paige	Triple-T Holsteins North Lewisburg OH
	03-02	102 9,777	4.3% 425	2.7%P 271P	
3473 Unique Dempsey Cheers		03/04/2015		S-Lirr Drew Dempsey D-Unique Alexander Charm	Budjon, Abbott, Vail, Woodmansee & Ferme Blondin Lomira WI
	03-01	112 10,929	4.2% 462	2.8%P 307P	
3474 Luck-E Olympian Action-ET		03/02/2015	B&O	S-Ladys-Manor Olympian D-Luck-E Braxton Aruba-ET	Matt Engel Hampshire IL
	02-02	282 22,452	4.4% 995	3.3%P 735P	
3475 Cache-Valley Brkw Halli-ET		03/01/2015		S-Mr Atwood Brokaw-ET D-Butlerview GC Glory	Matt & Lena Leak Cornish UT
3476 Erbacres Snapple Shakira-ET		03/01/2015		S-GS Alliance O Kaliber D-Miss Apple Snapple-Red-ET	Ferme Jacobs, Ty-D Holsteins, Kilian Theraulaz, Ferme Antelimarck, C&f Jacobs Cap-Sante QC
	02-01	161 5,039	4.8% 244	3.5%P 174P	
3477 Ms Legendholm Hez Hope		03/01/2015	B&O	S-Domicole Chelios-ET D-Hez Atwood Heidilin-ET	Legendholm Holsteins Freedom WI
	02-02	286 20,845	4.5% 932	3.4%P 702P	
3478 Zbw Corvette Alfalfa		03/01/2015	B&O	S-Sonnek Gc Corvette-ET D-Prestige-Gen Allstar	K&b Ziemba, B Oster & S Vail Durhamville NY
	02-01	305 24,089	4.2% 1,004	3.2%P 782P	
		309 24,405	4.2% 1,017	3.2%P 792P	

Class **733 Senior Three-Year-Old Cow**

Born 09/01/2014 - 02/28/2015

Premiums: \$200, 150, 145, 140, 135, 130, 125, 120, 115, 110, 100, 95, 85, 80, 75, 70, 65, 65, 60, 60

1st Place Award presented by International Protein Sires, Rock Springs, WI

Bred & Owned Award presented in memory of Robert "Whitey" McKown

Production Award presented by Prairie Farms, Edwardsville, IL

Best Udder Rosette presented by Cattle Connection, Amery, WI

3479	Ms Macland Caramel Latte	02/06/2015	B&O	S-Erbacres Damion	Scott Culbertson
	02-01 301 18,730 3.7% 696 3.3%P 615P			D-Eastside Brady Caramel	Elgin MN
3480	Jacobs Absolute Beigette	02/02/2015	B&O	S-Apples Absolute-Red-ET	Ferme Jacobs
	02-02 284 16,682 4.4% 741 3.8%P 631P			D-Jacobs Golswyn Beige	Cap-Sante QC
3481	Rotaly Doorman Lys	02/02/2015		S-Val-Bisson Doorman-ET	Pierre Boulet and Clark Valley
	01-11 292 16,803 4.6% 778 3.7%P 622P			D-Rotaly Sidd Lill	Montmagny QC
3482	Kingsway Doorman Wanda	01/22/2015		S-Val-Bisson Doorman-ET	Velthuis Farms LTD.
	03-03 70 7,998 4.4% 348 2.9%P 234P			D-Glengarry Atwood Anne	Osgoode ON
3483	Groenway Unix Mascarade	01/05/2015		S-Croteau Lesperron Unix	D Hovden, M Mitchell, F&D Borba and Rosedale
	02-03 305 21,632 4.1% 886 3.1%P 666P			D-Groenway Myra Saquille	Oxford WI
3484	Mapleley Goldwyn Julia	01/02/2015		S-Braedale Goldwyn	Lookout, G Todd, F & D Borba, Elite Haven
	03-02 130 27,535 4.0% 1,087 3.2%P 880P			D-Mapleley Duplex Juplex	Canton De Hatley QC
3485	Teebrook Dempsey Rebecca	12/28/2014		S-Lirr Drew Dempsey	Dalton J Faris
				D-Teebrook Celeb Rocket	East Gwillimbury ON
3486	Ms Sherona-Hill Riddle-ET	12/23/2014		S-Apples Absolute-Red-ET	Morgan & Adam Olbrich
	02-03 288 18,477 4.3% 790 3.6%P 667P			D-Sherona-Hill-JH Rachel-ET	Harvard IL
3487	Savage-Leigh Gold Lala-ET	12/20/2014	B&O	S-Breadale Goldwyn	Chase Savage
				D-Savage-Leigh Leona-ET	Union Bridge MD
3488	Mapel Wood Kingboy Lacey-ET	12/16/2014		S-Morningview Mcc Kingboy	Jacob Siemers
	02-10 305 44,070 3.7% 1,097 3.5%P 965P			D-Comestar Lautamai Man O Man-ET	Newton WI
3489	Joliam R Penny 4751-ET	12/14/2014	B&O	S-Regancrest Reginald-ET	Nicole Pralle
	03-06 38 4,153 4.3% 177 3.0%P 123P			D-Joliam Dundee 3035	Humbird WI
3490	Kingsway Goldwyn Lauren	12/14/2014		S-Braedale Goldwyn	Select Farm, G&j Gonzalez and Hodglyn Holsteins
	02-02 305 20,538 4.0% 822 3.2%P 655P			D-Kingsway Sanchez Lipstick	Oxford WI
3491	Kingsway Goldwyn Lip Balm-ETS	12/14/2014		S-Braedale Goldwyn	Glamourview-lager & Walton
	02-06 305 12,902 3.7% 476 2.9%P 411P			D-Kingsway Sanchez Lipstock	Walkersville MD
3492	Tree-Hayven Justice-ET	12/10/2014		S-Heavenly Golden Dreams-ET	Hailey, Allison, Jack, & Chloe Zernicke
	03-03 144 12,710 4.0% 503 2.9%P 369P			D-Dannys Durham Jillian-ET	Oxford WI
3493	Ms SNS Blackpepper-ET	12/05/2014	B&O	S-Scientific Destry-ET	Dawn & Virgil Haag
	02-00 305 25,996 3.0% 769 3.4%P 829P			D-AHM Lady Pepperdine-ET	Mt. Horeb WI
	365 29,985 3.0% 912 3.4%P 1,020P				
3494	T-Triple-T Perfect Storm-ET	12/02/2014	B&O	S-Regancrest Reginald-ET	Triple-T Holsteins & Entourage-LC
	03-03 161 16,070 5.7% 927 3.1%P 502P			D-T-Triple-T Dundee Paige	North Lewisburg OH

3495	Weeksdale Absolut Vodka	12/02/2014	B&O	S-Apples Absolute-Red-ET	Weeksdale, Frank & Diane Borba, Rocky Allen				
	02-01	305	25,620	3.7%	948	3.3%P	853P	D-Weeksdale Casino Knockout	Pleasant Valley PE
		365	29,564	3.7%	1,089	3.4%P	1,003P		
3496	Miss Wbk Brittany-ET	12/01/2014	B&O	S-Gillette Windbrook-ETS	Mike & Julie Duckett				
	02-09	305	19,331	5.2%	1,004	3.5%P	681P	D-Sandy-Valley Atwd Blacky-ET	Rudolph WI
3497	Ms Goldwyn Saturday-ET	11/15/2014		S-Braedale Goldwyn	Ferne Jacobs, Ferne Intense and W. Morrille				
	02-01	305	15,809	5.1%	811	3.6%P	571P	D-Happydanny Jayz Sunday-ET	Cap-Santé QC
		365	19,145	5.3%	1,012	3.7%P	703P		
3498	Ej-Acres Chelios Sid Bright	09/22/2014		S-Domicole Chelios-ET	M, M, & M Price and C Cunningham				
				D-Ej-Acres Sid Star	Martinton IL				
3499	Hillpine Ds Night Moves	09/20/2014	B&O	S-Maple-Downs-I G W Atwood-ET	Megan R Lauber				
	02-02	305	23,226	4.6%	1,088	3.5%P	817P	D-Frater Duplex Jeromelle	Union Grove WI
3500	Comestar Hopra Atwood-ET	09/19/2014		S-Maple-Downs-I G W Atwood-ET	Budjon Farms and Peter & Lyn Vail				
	03-06	132	13,026	3.7%	486	2.8%P	370P	D-Comestar Horizon Jasper	Lomira WI
3501	Brookview Sid Loverslane-ET	09/12/2014	B&O	S-Pine-Tree Sid-ET	J. Garrett Havens				
	02-05	305	20,098	4.0%	811	3.1%P	619P	D-Brookview-E Spirit Lilac	Fremont OH
3502	Gleann Brady Privateer	09/10/2014		S-Butz-Bulter Atwood Brady-ET	Jocelyn Cote and Michael Paris				
	02-04	305	23,307	4.2%	985	3.2%P	734P	D-Brookvilla Promptly Duplex	Canton De Hatley QC
		365	27,608	4.1%	1,122	3.2%P	884P		
3503	Vale-O-Skene Gold Karmilla-ET	09/10/2014		S-Braedale Goldwyn	Jonathan & Alicia Lamb				
	02-10	154	11,530	3.9%	452	3.4%P	392P	D-Tiny Acres Dundee Kathleen	Oakfield NY
		359	24,110	4.4%	1,053	3.5%P	850P		
3504	Corlane Seaver Misty	09/09/2014		S-R-E-W Seaver-ET	Frank D & Carol Borba & Frank A & Diane Borba				
	03-09	40	4,077	3.2%	130	2.8%P	115P	D-Corlane Complex Marbles	Owatonna MN
3505	Ms Apple Anzlee	09/02/2014		S-Maple-Downs-I G W Atwood-ET	Ernest Kueffner				
	02-05	305	26,310	4.8%	1,258	3.5%P	932P	D-KHW Regiment Apple-Red-ET	Boonsboro MD
3506	Ms Apple Arrie-ET	09/02/2014		S-Maple-Downs-I G W Atwood-ET	Arrie Syndicate				
	03-10	28	2,144	4.2%	102	3.3%P	72P	D-KHW Regiment Apple-Red-ET	Sun Prairie WI
3507	Elmbridge Atwood Angelina	09/01/2014		S-Maple-Downs-I G W Atwood-ET	Westcoast Holsteins				
				D-BVK Casino Adeen Ada-ET	Chilliwack BC				
3508	Reyncrest Wb Gold Ring	09/01/2014	B&O	S-Gillette Windbrook-ETS	Reyncrest Farm				
	03-06	120	15,000	3.5%	525	3.0%P	500P	D-Reyncrest Gold Locket-ET	Corfu NY

Class 736 Intermediate Champion Female

Premium \$150 (if not Grand or Reserve Grand Champion)

Eugene Nelson Intermediate Champion Award and Rosette presented by GenOvations, Lodi, WI

Champion Banner presented by Boviteq, Madison, WI

Class 737 Reserve Intermediate Champion Female

Premium \$100 (if not Reserve Grand Champion)

Award presented by Mill-Wheel Farm, Johnson Creek, WI

Reserve Champion Banner presented by Boviteq, Madison, WI

Rosette presented by Rivendale Farms, Bulger, PA

Class **738 Four-Year-Old Cow**

Born 09/01/2013 - 08/31/2014

Premiums: \$200, 150, 145, 140, 135, 130, 125, 120, 115, 110, 100, 95, 85, 80, 75, 70, 65, 65, 60, 60

1st Place Award presented by International Protein Sires, Rock Springs, WI

Bred & Owned Award presented by Ram-Elle Holsteins & Jerseys, Michelle & Loren Eilenstine, Mountain Grove, MO

Special Award presented by Hokkaido Holstein Association, Hokkaido, Japan

Production Award presented by Prairie Farms, Edwardsville, IL

Best Udder Rosette presented by Cattle Connection, Amery, WI

3509	Lida-Acres Wood Scarlett	07/10/2014	B&O	S-Pine-Shelter Clay Wood-ET D-Lida-Acres Deann Siera	Gregory Johnson Pelican Rapids MN
3510	Ourway Absolute Lexington 02-04 305 14,642 4.9% 722 3.7%P 548P	06/03/2014	B&O	S-Apples Absolute-Red-ET D-Ourway Redlnr Lexie	Ourway Holsteins Brooklyn WI
3511	Willows-Edge Atwod Faith-ET 03-11 96 13,129 2.5% 324 2.7%P 357P	05/11/2014		S-Maple-Downs-I G W Atwood-ET D-Willows-Edge Bolton Flicker	Velthuis Farms LTD. Osgoode ON
3512	Luck-E Absolute Kelly 04-05 305 26,302 4.1% 1,088 3.3%P 873P	03/16/2014		S-Apples Absolute-Red-ET D-Luck-E Advent Kiata	Trace Johnson Poplar Grove IL
3513	K-Land Kilo Black Diamond 03-05 305 30,301 3.9% 1,209 3.0%P 920P 360 35,006 3.9% 1,385 3.0%P 1,078P	03/13/2014		S-K-Land Kilo D-K-Land Puc-Man Kindle	Black Diamond Partnership Sun Prairie WI
3514	Ms Elmvue Novelty Keeley 04-05 62 5,823 2.4% 140 2.9%P 171P	03/12/2014	B&O	S-Elmvue Gold Novelty-ET D-Ms Elmvue Durham Korin-ET	Elmvue Farm Johnstown NY
3515	Idee Windbrook Lynzi	03/05/2014		S-Gillette Windbrook D-Idee Goldwyn Lucia	Allyndale, Mb-Luckylady, Jm Valley, S. Gendreau Amqui QC
3516	RBCC-Xtreme V Sid-Evil 02-06 305 21,477 4.2% 896 3.0%P 654P	03/02/2014	B&O	S-Pine-Tree Sid-ET D-Velthuis Goldwyn Elegant-ET	Rhett, Shanelle, Wyatt & Garrett Borth Ellsworth WI
3517	Chakelburg Evasion Kaught 03-10 222 21,747 4.8% 1,068 3.1%P 674P	02/21/2014		S-Velthuis Sg Evasion-ETS D-Barwillow Bolton Kenya	Kristopher Ackley East Liberty OH
3518	Mission-Bell Pitbull Oneida 03-02 305 30,162 3.1% 933 2.9%P 880P	01/20/2014	B&O	S-Go-Farm Pitbull D-Mission-Bell Aaron Ornament	Shaun T Jens and Savanah R Barts Sheboygan Falls WI
3519	Lindenright Gold Annabel	12/24/2013		S-Braedale Goldwyn D-Eastside Lewisdale Dundee Abe	Westcoast Holsteins Chilliwack BC
3520	Trulea GW Atwood Candy 03-02 305 20,050 3.9% 782 3.4%P 681P	12/13/2013		S-Maple-Downs-I G W Atwood-ET D-Goldcrest Shottle Cutie	Glamourview-lager & Walton Walkersville MD
3521	Lingle Gold Freaky Girl 04-04 127 12,539 3.7% 461 3.0%P 377P	12/03/2013		S-Braedale Goldwyn D-Lingle Dd Fearsome	Budjon Farms and Peter & Lyn Vail Lomira WI
3522	Ack-Lee Dempsey Passion 03-04 305 25,093 3.9% 978 3.2%P 813P 341 27,838 4.1% 1,088 3.1%P 892P	11/16/2013	B&O	S-Lirr Drew Dempsey D-Ack-Lee Dundee Petunia-ET	Peter Vail, Pat Conroy, Jay Ackley East Liberty OH
3523	Jacobs Windbrook Aimo 03-05 305 27,904 4.1% 1,131 3.3%P 906P 323 29,233 4.1% 1,195 3.3%P 959P	11/14/2013	B&O	S-Gillette Windbrook D-Jacobs Minister Aima	Ferme Jacobs Cap-Sante QC
3524	Hardwood Atwood Botelli	11/11/2013		S-Maple-Downs-I G W Atwood-ET D-Hardwood Windbrook Botessa	Jenna Langer and Joel Kietzman Rio WI

3525	Sunnyhome McCutchen Mildred	11/06/2013	S-De-Su BKM Mccutchen 1174-ET	Connor K Erbsen
	03-09 305 28,998 4.1% 1,188 3.0%P 882P		D-Sunnyhome Dempsey Mildred	Lanark IL
	332 30,585 4.1% 1,253 3.1%P 934P			
3526	Juniper-Haven Atwood Dolly	10/19/2013	S-Maple-Downs-I G W Atwood-ET	Doeberiener, Bowen and Heath
			D-Juniper-Haven Dollys Onward	West Salem OH
3527	Gamblin Armani Glade	10/07/2013	S-Mr Apples Armani-ET	Dan Hovden, F. & D. Borba & Rosedale
	03-01 305 31,253 4.2% 1,299 3.1%P 982P		D-Gamblin Affirmed Glory	Oxford WI
3528	Ryan-Vu Gchip Claudette-ET	09/25/2013	S-Mr Chassity Gold Chip-ET	Joseph Opsal
	03-07 305 33,840 4.0% 1,352 3.0%P 1,022P		D-Frozenes Sanchez Claudia	Blue Mounds WI
	365 38,845 4.0% 1,577 3.1%P 1,197P			
3529	Lantland Windbrook Hysteria	09/23/2013 B&O	S-Gillette Windbrook-ETS	Jacob Menzi
	02-06 201 25,720 4.4% 1,122 3.5%P 903P		D-Landland Aspen Hemley	Millport NY
3530	Rummage Atwood Slenia	09/22/2013	S-Maple-Downs-I G W Atwood-ET	Lookout, G Todd, G Halbach, R Rummage
	02-09 305 25,483 4.7% 1,186 3.3%P 831P		D-Rummage Advent Sugar	Canton De Hatley QC
	365 30,364 4.8% 1,451 3.3%P 1,005P			
3531	Musthaven Goldwyn Jaelyn P	09/11/2013	S-Braedale Goldwyn	M, M, & M Price and C Cunningham
	03-11 305 29,416 3.9% 1,136 3.3%P 974P		D-Musthaven Danon Joriann P	Martinton IL
	306 29,488 3.9% 1,139 3.3%P 976P			
3532	Eastriver Goldwyn Deb 176	09/09/2013	S-Braedale Goldwyn	Andy Stuewe & Corey Feltmann
	03-06 305 27,942 4.2% 1,161 3.2%P 894P		D-Homestead Astronomical Deb	Hamburg MN
	326 29,672 4.2% 1,257 3.2%P 958P			
3533	T-Triple-T Petunia-ET	09/04/2013 B&O	S-Braedale Goldwyn	Colton Thomas and Cole & Olivia Cummings
	02-09 305 22,332 4.7% 1,057 3.2%P 721P		D-T-Triple-T Dundee Paige	North Lewisburg OH
	365 25,417 4.7% 1,214 3.2%P 836P			
3534	Plum-Line Reginald Velour	09/03/2013 B&O	S-Regancrest Reginald-ET	Brooke Carey
	04-05 166 18,045 3.7% 667 2.9%P 527P		D-Plum-Line Sanchez Valley	Titusville PA
3535	Willows Edge Golds Matilda	09/03/2013 B&O	S-Toc-Farm Goldsun-ET	Bonnie Van Dyk
	02-10 305 24,900 4.0% 995 3.3%P 823P		D-Willows Edge Advent Malika	New Richmond WI
	333 26,288 4.0% 1,054 3.3%P 872P			
3536	Ms Rocklan Goldwyn Ashlyn-ET	09/01/2013	S-Braedale Goldwyn	Tyler J. Meyer
	04-09 95 11,112 3.8% 427 2.8%P 312P		D-Butlerview Shottle Amy-ET	Delavan WI

Class 739 Five-Year-Old Cow

Born 09/01/2012 - 08/31/2013

Premiums: \$200, 150, 145, 140, 135, 130, 125, 120, 115, 110, 100, 95, 85, 80, 75, 70, 65, 65, 60, 60

1st Place Award presented by Bertschland Farms, Inc., Dr. & Mrs. James Bertsch, Cambridge City, IN

Bred & Owned Award presented by Ontario Holstein Branch, Canada

Production Award presented by Prairie Farms, Edwardsville, IL

Best Udder Rosette presented by Cattle Connection, Amery, WI

3537	Vriesdale Control Bethany	08/01/2013	S-JK Eder-I Control-ET	Mike & Julie Duckett
	04-01 248 20,913 3.6% 753 3.1%P 649P		D-Vriesdale Goldwyn Barbi-ET	Rudolph WI
3538	Walkerbrae Dorman Locket-ET	06/06/2013	S-Val-Bisson Doorman-ET	Tim & Sharyn Abbott and Ferme Blondin
	04-09 96 13,571 4.9% 664 2.9%P 396P		D-Gloryland-I Goldwyn Locket-ET	Enosburg VT
3539	TJR Arieta Mccut 2256-ET	05/21/2013	S-De-Su BKM McCutchen 1174-ET	Andrew Jay & Lynettee Buttles
			D-Ms Ariel Moman Arita-ET	Peosta IA

3540	Jacobs Gold Liann		05/14/2013		S-Mr Chassity Gold Chip-ET D-Redama Allen Lice	Westcoast Holsteins Chilliwack BC
3541	Tuytel Atw Barbara-9-ET		05/01/2013		S-Maple-Downs-I G W Atwood-ET D-Butz-Butler Gold Barbara-ET	Samuel Fisher and Christopher Savage Union Bridge MD
3542	Ms Stadview Atwood Felicia		04/20/2013		S-Maple-Downs-I G W Atwood-ET D-Keli Aspen Fantasy	Dillon Gratz Atwater MN
	04-10	159	15,006	4.1%	614	2.6%P 395P
3543	Sunrose Jaily		04/17/2013	B&O	S-Mr Chassity Gold Chip-ET D-Sunrose Jalyssa	Bruce & Tricia Gingerich Millersburg IN
	03-08	305	23,213	3.8%	881	3.1%P 717P
		348	24,646	3.8%	948	3.1%P 767P
3544	Sunrose Demi		03/13/2013	B&O	S-Toc-Farm Goldsun-ET D-Sunrose Donna	Bryce & Brant Gingerich Millersburg IN
	04-05	303	25,703	3.8%	978	3.1%P 804P
3545	Millbrooke Atwood Ooh La La		03/08/2013		S-Maple-Downs-I G W Atwood-ET D-Millbrooke Dolman Oshie	Regan Demmer Peosta IA
	04-01	305	30,340	3.5%	1,054	3.2%P 976P
3546	Al-Shar Dempsey Alison		03/02/2013		S-Lirr Drew Dempsey D-Ms Al-Shar Dundee Adore-ET	Yvon Sicard and Ferme Blondin St-Justin QC
	04-04	305	31,394	3.8%	1,199	3.2%P 1,001P
		313	32,125	3.8%	1,230	3.2%P 1,030P
3547	Farnear TBR Aria Adler-ET		03/02/2013		S-De-Su BKM Mccutchen 1174-ET D-Ms Apples Aria-ET	A Dougherty, A Simon and A, C, & C Rauen Farley IA
	03-11	289	34,239	4.9%	1,736	3.3%P 1,098P
3548	Webb View Betsy Sanchez		02/02/2013		S-Gen-Mark Stmatic Sanchez D-Webb View Betty Final Cut	Brennan Woker Greenville IL
	02-09	305	22,026	3.4%	646	2.9%P 638P
3549	Bluff-Ridge Destry Bernice		12/21/2012	B&O	S-Scientific Destry-ET-RC D-Bluff-Ridge Talent Bailey	Sarah Butler Arrowsmith IL
	03-08	305	22,536	3.5%	783	3.3%P 738P
3550	Jacobs Jordan Carmel		12/12/2012		S-Gillette Jordan D-Robrook Dundee Constance	Ferme Blondin Saint-Placide QC
	03-07	305	30,622	4.0%	1,210	3.1%P 935P
		365	35,115	4.0%	1,396	3.1%P 1,093P
3551	Ms Andis GW Astra-ET		12/03/2012		S-Braedale Goldwyn D-MS Andis Shottle Aneeda-ET	Matthew Boop Millmont PA
	04-05	305	42,866	3.8%	1,631	3.0%P 1,299P
3552	Bonivista Cyclone Moon		11/10/2012		S-Comestar Lavanguard D-Bonivista Twister Moon	Kade Meyer Postville IA
	05-09	305	31,080	2.7%	830	3.0%P 942P
3553	Groves-Vu Brax Brooklyn-ET		11/10/2012		S-Regancrest S Braxton-ET D-Kellogg-Bay Jasper 11-ET	Blake Wright Verona MO
	04-04	305	22,390	3.2%	706	2.9%P 648P
		365	25,655	3.2%	827	2.9%P 756P
3554	Springbend Windhammer Slash		09/23/2012	B&O	S-Gillette Windhammer-ETS D-Springbend Roy Serona-ET	Springbend Farms Owatonna MN
	05-10	5	253	5.1%	13	4.0%P 10P
3555	Beaverbrock Goldwyn Zoey-ET		09/16/2012		S-Braedale Goldwyn D-Beaverbrock Dundee Rosey	MilkSource Genetics, LLC Kaukauna WI
	03-05	305	32,005	3.4%	1,075	3.0%P 949P
		365	37,010	3.4%	1,276	3.0%P 1,112P
3556	Bucks-Pride Gold Chip Winie		09/07/2012	B&O	S-Mr. Classify Gold Chip-ET D-Bucks-Pride Toy Story Tigger	Topp-View/Bucks Pride Botkins OH
	04-05	305	26,273	3.7%	985	2.8%P 745P
3557	Co-Vale Dempsey Dina 4270-ET		09/05/2012		S-Lirr Drew Dempsey D-Co-Vale Jasper Darla 3366	Ransom Rail and MilkSource Genetics, LLC Kaukauna WI
	04-06	305	33,395	4.0%	1,330	3.2%P 1,075P
		365	38,401	4.0%	1,549	3.3%P 1,252P

3558	Vale-O-Skene Attic Stars	09/02/2012	S-Allyndale-I Attic-ET	M, E & N Gilbertson, G & H Flannery and H Reeson Hollandale WI
	04-05	305 25,490 4.1% 1,050 3.0%P 754P	D-Vale-O-Skene Gibson Skye	
		365 28,890 4.3% 1,245 3.1%P 882P		
3559	Harvue Atwood Ginger	09/01/2012 B&O	S-Maple-Downs-I G W Atwood-ET	Mike & Julie Duckett and Harvue Farms Rudolph WI
	04-10	305 34,265 3.4% 1,149 2.7%P 907P	D-Harvue Blitz Glitz	
		365 40,460 3.4% 1,375 2.7%P 1,088P		
Class 740 Six-Year-Old & Older Cow				
Born before 08/31/2012				
Premiums: \$200, 150, 145, 140, 135, 130, 125, 120, 115, 110, 100, 95, 85, 80, 75, 70, 65, 65, 60, 60				
1st Place Award presented by Addison RC Syndicate, LLC, Brooklyn, IA				
Bred & Owned Award presented by International Protein Sires, Rock Springs, WI				
Production Award presented by Prairie Farms, Edwardsville, IL				
Best Udder Rosette presented by Cattle Connection, Amery, WI				
3560	Masal Sanchez Gail	08/04/2012	S-Gen-Mark Stmatic Sanchez	Brad & Sophie Fuhrman & Brant Gingerich Millersburg IN
	03-10	305 30,132 4.1% 1,224 3.1%P 926P	D-Masal Grand 4677	
		365 35,430 4.0% 1,426 3.1%P 1,110P		
3561	Knonaudale Mudpie-ET	06/14/2012	S-Pine-Tree Sid-ET	Justin Powell Tremont IL
	04-08	305 30,120 4.6% 1,377 3.3%P 989P	D-Knonaudale Jasmine-ET	
3562	Gamlake Destry Sallie	05/14/2012 B&O	S-Scientific Destry-ET-RC	Samantha Gambonini Petaluma CA
	05-03	305 36,380 3.7% 1,334 3.1%P 1,115P	D-Gamlake Garrison Celeste	
3563	Lovhill Braxton Funky-ET	05/12/2012	S-Regancrest S Braxton-ET	Joseph, Zach, Jerome & Darian Stransky Owatonna MN
	04-04	305 30,642 3.5% 1,067 2.7%P 833P	D-Stanhope Felicia Dundee-ET	
3564	Jacobs Lauthority Loana	04/15/2012 B&O	S-Comestar Lauthority	Ferme Jacobs & Pat Conroy Cap-Sante QC
	04-00	305 27,388 4.3% 1,164 3.2%P 882P	D-Jacobs Outside Linsey	
		365 30,732 4.4% 1,338 3.3%P 1,012P		
3565	Cache-Valley Gc Jazzy Girl	03/15/2012 B&O	S-Mr Chassity Gold Chip-ET	Xander Harris Richmond UT
	04-08	305 23,310 4.0% 937 3.2%P 753P	D-Cache-Valley Shot 2397-ET	
		364 25,870 4.0% 1,048 3.2%P 849P		
3566	Farnear-TBR-BH-At Corona-ET	03/02/2012	S-Maple-Downs-I G W Atwood-ET	Westcrest Farms/ Robert & James Weston Watertown WI
	05-02	305 26,790 4.3% 99 3.4%P 666P	D-Mystique Sanchez Corona-ETS	
3567	Tk-Plain-View Ripley	03/01/2012	S-Lirr Drew Dempsey	MilkSource Genetics, LLC Kaukauna WI
	05-00	305 29,880 4.6% 1,361 3.3%P 987P	D-Tk-Plain-View Remi	
		365 34,040 4.7% 1,599 3.4%P 1,159P		
3568	Tombeth Linjet Louise	12/11/2011 B&O	S-Sunnylodge Linjet	Tom and Elizabeth Kearns Gays Mills WI
	06-00	233 26,277 4.0% 1,057 2.8%P 730P	D-Tombeth Durham Ellen	
3569	Cavanaleck Dempsey Bozica	12/02/2011	S-Lirr Drew Dempsey	Yvon Sicard, Pierre Boulet, Ferme Du Petit Chene St-Justin QC
	05-01	305 34,445 3.9% 1,329 3.2%P 1,093P	D-Cavanaleck Gibson Bramble	
		365 39,015 3.9% 1,526 3.3%P 1,270P		
3570	Bluff-Ridge Atwood Bridget	12/01/2011 B&O	S-Maple-Downs-I G W Atwood-ET	Sarah Butler Arrowsmith IL
	06-01	176 14,833 4.1% 603 3.2%P 470P	D-Bluff-Ridge Rubens Bridget	
3571	Jobo Seaver Ainsly	10/25/2011	S-R-E-W Seaver-ET	Jake, Connor & Lauren Siemers Newton WI
	04-08	305 33,840 3.6% 1,224 3.3%P 1,100P	D-Jobo Mw 329 Alicia	
3572	Cavanaleck BG Bruin	09/08/2011	S-Braedale Goldwyn	Majestic View Genetics, R Shore and R Connery Sun Prairie WI
	06-08	82 9,402 3.3% 317 2.5%P 236P	D-Cavanaleck Dundee Branco	

3573	Weeks Dundee Anika	06/03/2011	S-Regancrest Dundee-ET	MilkSource Genetics, LLC
	05-10 268 25,417 3.4% 875 3.5%P 901P		D-Whittier Farms Gold Anna-ET	Kaukauna WI
3574	Zimmer Krusader Ava	05/09/2011 B&O	S-O-Bee Krusader	Benbie Holsteins, Robella Holsteins, Zimmer Holsteins
	05-09 305 40,351 4.7% 1,885 3.5%P 1,415P		D-Smithden Bolton Alexandria	Caron SK
	365 46,352 4.7% 2,167 3.6%P 1,942P			
3575	Liddleholme-Y H G Rae-ET	10/10/2010	S-Braedale Goldwyn	Arnie, Ashley & Andy Gruenes
	07-04 70 7,830 4.0% 312 3.0%P 232P		D-Liddleholme-R Drhm Rhonda-ET	Richmond MN
3576	Butlerview Aftersh April-ET	09/19/2010	S-Ms Atlees Sht Aftershock-ET	Ryan Lauber
	05-04 305 22,193 4.0% 1,187 2.9%P 849P		D-Brookvilla Jasper Aka	Union Grove WI
3577	Bella-Rosa GW Sara-ET	09/12/2008	S-Braedale Goldwyn	Jonathan & Alicia Lamb
	08-06 305 25,850 4.3% 1,120 3.1%P 806P		D-Bella-Rosa Spendide	Oakfield NY
	365 29,760 4.4% 1,295 3.2%P 950P			
Class 741 150,000 Lb. Production Cow				
Born before 08/31/2012				
Lifetime production over 150,000 Lbs. of milk. Official milk production test sheets are required.				
Premiums: \$200, 150, 145, 140, 135, 130, 125, 120, 115, 110				
1st Place Award presented by International Protein Sires, Rock Springs, WI				
Bred & Owned Award presented by Addison RC Syndicate, LLC, Brooklyn, IA				
Production Award presented by Prairie Farms, Edwardsville, IL				
Best Udder Rosette presented by Cattle Connection, Amery, WI				
3578	Siemers Bradnick Takira	07/03/2012	S-Regancrest-Gv Bradnick-ET	Ken Horn & Garrett Schmidt
	03-01 305 41,215 3.1% 1,295 2.6%P 1,095P		D-Laumax Final Cut Tamia-ET	Melrose WI
3579	Jacobs Fever Cael	09/03/2011 B&O	S-Crackholm Fever	Ferne Jacobs
	05-08 305 37,024 4.8% 1,766 3.3%P 1,208P		D-Combination Champion Crosby	Cap-Sante QC
	321 38,290 4.8% 1,836 3.3%P 1,261P			
3580	T-Triple-T Platinum-ET	09/02/2010 B&O	S-Braedale Goldwyn	Triple-T Holsteins, Aaron Eaton & Brad Murphy
	07-04 214 29,863 7.1% 2,143 3.0%P 869P		D-T-Triple-T Dundee Paige	North Lewisburg OH
3581	Laidlawn Sanchez Gemini	08/25/2010	S-Gen-Mark Stmatic Sanchez	Mike & Julie Duckett
	05-00 305 37,941 3.7% 1,398 2.8%P 1,011P		D-Laidlawn Goldwyn Gem-TW	Rudolph WI
	365 45,502 3.7% 1,692 2.8%P 1,249P			
3582	TC Sanchez Kristina	12/01/2009	S-Gen-Mark Stmatic Sanchez	Eaton Holsteins and Cooper Galton
	07-09 169 26,280 3.3% 850 2.7%P 729P		D-TC Terrason Krista	Marietta NY
3583	Cache-Valley Lheroes 2331-ET	09/05/2009	S-Comestar Lheros-ET	Ernest Kueffner
	07-06 305 39,049 5.2% 2,028 2.8%P 1,096P		D-Cache-Valley W Dezi Dur	Boonsboro MD
3584	Tombeth Shottle Enhance	06/19/2009 B&O	S-Picston Shottle-ET	Tom and Elizabeth Kearns
	08-06 216 21,416 3.8% 809 2.8%P 610P		D-Tombeth Durham Ellen	Gays Mills WI
3585	Liddleholme Resur Lu-ET	12/01/2008 B&O	S-Carrousel Resurrect-Red-ET	Anthony Liddle
			D-Brigeen-Hh Sept St LuLu-Red-ET	Argyle NY
3586	Ky-Blue Gw Debbie	06/04/2008	S-Braedale Goldwyn	Nick & Jessica Sarbacker and Matthew & Lauren
	08-06 305 32,584 3.9% 1,274 2.9%P 960P		D-BVK Outside Diana-ET	Evangelo Whitewater WI
3587	Sunrose Delaney	08/03/2007 B&O	S-Regancrest Dundee-ET	Brant Gingerich
	06-08 305 37,490 4.0% 1,492 2.7%P 1,008P		D-Sunrose Black Ice Denise	Millersburg IN
	365 41,150 4.0% 1,643 2.7%P 1,128P			

3588	Loyalyn Goldwyn June	06/16/2006	S-Braedale Goldwyn	Pierre Boulet
	08-00	305 31,731 4.3% 1,354 3.3%P 1,047P	D-Loyalyn Allen April	Montmagny QC
		360 35,849 4.4% 1,578 3.4%P 1,219P		

Class 742 Best Three Females

All must be bred by the exhibitor and at least one animal must be owned (solely or in partnership) by the exhibitor. Breeder is identified as listed on the registration paper. Where animals are bred by different members of a family, and where the herd is one unit, they are considered as bred by one breeder. When animals are bred in partnership, each partnership is considered a unique breeder. Each exhibitor is limited to one entry. Entries in the group classes must be entered and shown in their individual classes.

Premiums: \$80, 50, 40, 30, 20

John Hetts Memorial Trophy courtesy of National Dairy Shrine, Fort Atkinson, WI

3589 David King
Waddington NY

3590 Ferme Jacobs
Cap-Sante QC

3591 Harris Dairyland
Richmond UT

3592 Kingsway Farms
Hastings ON

3593 Kole & Beau Trapp and Olivia Pfaff
Taylor WI

3594 Mike & Julie Duckett
Rudolph WI

3595 Oakfield Corners Dairy
Oakfield NY

3596 Reyncrest Farm
Corfu NY

3597 Sarah Butler
Arrowsmith IL

3598 Sunrose Holsteins
Millersburg IN

3599 Triple-T Holsteins
North Lewisburg OH

Class 743 Produce of Dam

Two animals, any age, the produce of one cow. Dam must be named. Each exhibitor is limited to one entry from the same dam. Animals may be owned by one or more exhibitors.

Premiums: \$80, 50, 40, 30, 20

1st Place Award presented by International Protein Sires, Rock Springs, WI

3600 Budjon Farms & Tim & Sharyn Abbott
Lomira WI

D-Walk Era Dundee Annelise

3601 Budjon Farms and Peter & Lyn Vail
Lomira WI

D-Lottos Atwood Lizette

3602 Ernest Kueffner
Boonsboro MD

D-Khw Regiment Apple-Red

3603 Jacob Kline Myerstown PA	D-Joy-Wil Dundee Millie-ET
3604 Jason J Kearns Gays Mills WI	D-Tombeth Durham Ellen
3605 Maple Downs Farms II Middleburgh NY	D-Maple-Downs-Al Gchip Galina
3606 Morgan Olbrich Harvard IL	D-Sherona-Hill-J H Rachel-ET
3607 Norman E. Nabholz West Union IA	D-KHW Regiment-Apple-Red-ET
3608 Precision Genetics Chilliwack BC	D-Westcoast Doorman Cash 3444
3609 Triple-T Holsteins North Lewisburg OH	D-T-Triple-T Dundee Paige
3610 Triple-T Holsteins North Lewisburg OH	D-T-Triple-T Dundee Paige

Class 744 Champion Bred & Owned

All first place animals, bred and owned by exhibitor are eligible.
The Fay Barney Recognition Award presented by Nasco, Fort Atkinson, WI
Award presented by Holstein Association USA, Inc.

Class 745 Nasco International Type & Production Award

Award presented by Nasco, Fort Atkinson, WI

Class 766 Senior Champion Female

Premium \$150 (if not Grand or Reserve Grand Champion)
James Crowley, Sr. Senior Champion Award presented by GenOvations, Lodi, WI
Champion Banner and Rosette presented by GenOvations, Lodi, WI

Class 767 Reserve Senior Champion Female

Premium \$100 (if not Reserve Grand Champion)
Award presented by Oakfield Corners Dairy, Jonathan & Alicia Lamb, Oakfield, NY
Reserve Champion Banner presented by GenOvations, Lodi, WI
Rosette presented by Rivendale Farms, Bulger, PA

Class 768 Grand Champion Female

Premiums: \$500
Allen Hetts Grand Champion Trophy presented by World Dairy Expo, Inc.
\$1,000 Udder Comfort Grand Champion Award presented by Udder Comfort International, Inc., Williamsburg, ON, Canada
Champion Banner presented by Select Sires, Inc., Plain City, OH
Rosette presented by GenOvations, Lodi, WI
Award presented by Holstein Association USA, Inc.

Class 769 Reserve Grand Champion Female

Premiums: \$250
Award presented by Green County Holstein Breeders Association, WI
Reserve Champion Banner presented by Select Sires, Inc., Plain City, OH
Rosette presented by Rivendale Farms, Bulger, PA

- Class **790 State Herd**
State Herd Banner and Individual Banners presented by Masters Choice Hybrids, Anna, IL

- Class **791 Premier Breeder**
Royal Banner presented by WeCover Structures Inc., Thamesville, ON, Canada

- Class **792 Premier Exhibitor**
Royal Banner presented by Select Sires, Inc., Plain City, OH

- Class **793 Premier Sire**
Award presented in memory of Ted Krueger by National Dairy Shrine, Fort Atkinson, WI

List of Exhibitors - Holstein

id	Name(s)	Farm Name	Address	City	State	Zip
8293	Kristopher Ackley	Ack-Lee Registered Holsteins	9738 Twp Rd 141	East Liberty	OH	43319
8500	Kristopher Ackley, Kaiden & Zailey Conroy	Ack-Lee Registered Holsteins	9738 Twp Rd 141	East Liberty	OH	43319
9111	Kristopher Ackley and Durham Meyer	Ack-Lee Registered Holsteins	9738 Twp Rd 141	East Liberty	OH	43319
9412	James Bertsch, Pat Conroy, Jay Ackley	Ack-Lee Registered Holsteins	00jdbgf	East Liberty	OH	43319
9112	Peter Vail, Pat Conroy, Jay Ackley	Ack-Lee Registered Holsteins	9738 Twp Rd 141	East Liberty	OH	43319
9748	Aleah Farms, Kingsway Farms, Werrhurst Holsteins	Aleah Farms	B2115 Concession 4 Thorah	Beaverton	ON	l0k 1a0
6005	Justin & Ashley Kaufman	All-Glo Farms	1683 Wills Church Road	Berlin	PA	15530
9238	Rick & Shannon Allyn Jeremiah Lungwitz	Allyndale	148 Clayton Rd	Canaan	CT	06018
9242	Richard & Shannon Allyn	Allyndale	148 Clayton Rd	Canaan	CT	06018
9245	R&s Allyn F&d Borba Jm Valley S Gendreau	Allyndale	148 Clayton Rd	Canaan	CT	06018
6634	Jordan Zoellner	Al-Shar	12897 407th Ave	Groton	SD	57445
2865	Arethusa Farm LLC	Arethusa Farm LLC	P.O. Box 1143	Litchfield	CT	06759
9319	Aspiration-Lyndon Stewart & Associates Inc	Aspiration Farms	5 Dormie Lane	Guelph	ON	N1G1G6
2933	Shawn & Levi Banowetz	Banowetz Dairy Farm	1276 320 Ave	Charlotte	IA	52731
9471	Terry Beckett	Beckholm Holsteins	23700 Lakeridge Rd	Sunderland	ON	L0C1H0
7297	Jaydn & Kennedy Kimball and Noah Reid	Beech Haven Ladies	9 Knox Rd	Windham	ME	04062
7714	Kennedy Kimball and Noah Reid	Beech Haven Ladies	9 Knox Rd	Windham	ME	04062
5512	J, L & M Harbaugh and A & A Loehr	Bella-View Holsteins	N11912 Graetz Rd.	Marion	WI	54950
7182	Benbie Holsteins, Robella Holsteins, Zimmer Holsteins	Benbie Holsteins	Box 68	Caron	SK	SOH 0R0
9410	Westcoast Holsteins, Benbie Holsteins, & Associates	Benbie Holsteins	Box 68	Caron	SK	SOH0R0
9771	Claire Betley	Betley Farms LLC	W1630 Redwood Dr	Pulaski	WI	54162
2324	Kasey Clanton	B-J Grove Holsteins	1199 N. 100th	Mulberry Grove	IL	62262
7949	Alek T & Brooke S Krueger	Blackrock Livestock	4168 Whaley Rd	Hazel Green	WI	53811
6874	Sarah Butler	Bluff-Ridge Holsteins	35310 E 900 N Rd	Arrowsmith	IL	61722
9675	Frank & Carol Borba and Frank & Diane Borba	Borba & Borba	25381 E. Dodds Rd.	Escalon	CA	95320
9107	Tim & Sharyn Abbott and Ferme Blondin	Borderview Genetics	2593 East Sheldon Rd.	Enosburg	VT	05450
7956	Borderview Genetics LLC-Tim & Sharyn Abbott	Borderview Genetics LLC	2593 East Sheldon Rd.	Enosburg	VT	05450
9205	Erin Harkenrider	Borderview Genetics LLC	2593 East Sheldon Rd.	Enosburg	VT	05450
9236	Tim & Sharyn Abbott, Dusty & Nicole Schirm, Declan Patten	Borderview Genetics LLC	2593 East Sheldon Rd.	Enosburg	VT	05450
9785	Borderview Genetics-Tim & Sharyn Abbott and Juniper Elite Holsteins	Borderview Genetics LLC	2593 East Sheldon Rd.	Enosburg	VT	05450
4947	Brandon Almeida	Brand-O Holsteins	Post Office Box 296	Hilmar	CA	95324
3382	Bradley & Amy Hoover and Boyd Schaufelberger	Brook-Corner Holsteins	531 Old Mt. Gretna Road	Lebanon	PA	17042
7118	J. Garrett Havens	Brookview Farms	4293 Tiffin Road	Fremont	OH	43420
4697	Bucks Pride LLC	Bucks Pride LLC	6387 E. Cr 12	Bloomville	OH	44818
8116	Budjon Farms & Tim & Sharyn Abbott	Budjon Farms	N9995 Soo Road	Lomira	WI	53048
3428	Budjon Farms	Budjon Farms	N9995 Soo Road	Lomira	WI	53048
8935	Skylar Buell	Buell's Bovines	7075 N Lewis Ave	Temperance	MI	48182
8006	M & T Clark, J & D Chupp	Chupps Farm	8464 W 580 Rd	Inola	OK	74036
8957	Justin, Daniel, Neveah, Emmet & Tyler Chupp	Chupps Farm	8464 W 580rd	Inola	OK	74036
2392	Cloverkey Farm	Cloverkey Farm	N4416 Cloverland Road	Ladysmith	WI	54848
4438	Cory Ryan Thompson	Coredale Farms	9080 Carlisle Rd	Wellsville	PA	17365
4441	Jessica Nolt	Country Path Holsteins	PO Box 407	Hartley	TX	79044
7203	Cranehill Genetics	Cranehill Genetics	21859 Crane Ave	Hilmar	CA	95324
3417	Roseanne Crave	Crave Brothers Farm LLC	W11650 Torpy Road	Waterloo	WI	53594
3440	Crave Brothers Farm LLC	Crave Brothers Farm LLC	W11650 Torpy Road	Waterloo	WI	53594
8208	Tim, Barb & Kyle Natzke	Crestbrooke Holsteins & Jerseys	N4543 County Highway K	Fond Du Lac	WI	54937
8982	Ryan Goedken	Crown Cattle Company	2307 270th Ave.	Earlville	IA	52041
1135	Ashlee Crubel	Crubelcrest Jerseys	8105 County A	Lancaster	WI	53813
2889	Noah Bilz	Dejong Dairy LLC	3398 Draper Rd	Dorchester	WI	54425
9849	Delaware Valley College Of Science & Ag.	Delaware Valley University	700 E Butler Ave	Doylestown	PA	18901
9575	Denn-Mar Farm	Denn-Mar Farm	2028 165th St. Ne	Rice	MN	56367
8990	Andrew Blausner	Dirty Boots Farm	202 Blausner Road	Oil City	PA	16301
8542	Gabbie Gregorio	Double G Jerseys	10950 E Janant Rd	Acampo	CA	95220
9221	Dawson Nickels, Madison & Melanie Sarbacker	Dreamfix Holsteins and Jerseys	W7478 Provimi Rd	Watertown	WI	53098
4724	Mike & Julie Duckett	Duckett Holsteins	7285 Cty Rd S	Rudolph	WI	54475
8995	Kade Meyer	Dusty Hollow	1117 Hwy 52	Postville	IA	52162
6139	Eaton Holsteins	Eaton Holsteins	3039 Brewer Rd.	Marietta	NY	13110
6143	Eaton Holsteins and Cooper Galton	Eaton Holsteins	3039 Brewer Rd.	Marietta	NY	13110
8848	Eaton Holsteins, Clarkvalley, Mt. Elgin	Eaton Holsteins	3039 Brewer Rd	Marietta	NY	13110
9474	Elmvue Farm	Elmvue Farm	1562 State Highway 67	Johnstown	NY	12095
1050	Connor K Erbsen	Erbacres	10974 Benson Rd	Lanark	IL	61046
1935	Ferme Blondin	Ferme Blondin	620 Rang St-Vincent	Saint-Placide	QC	J0V 2B0
9073	Ferme Cerpolaît	Ferme Cerpolaît S.e.n.c	1365 Rang Du Bord De Leau O	St-Louis	QC	j0g1k0
7908	Ferme Glauser Et Fils	Ferme Glauser Et Fils	1221 Rte 133	Pike River	QC	J0J 1P0
1450	Ferme Jacobs	Ferme Jacobs	63 St-Francois Est	Cap-Sante	QC	G0A1L0
9069	Ferme Jacobs & Ferme Jean-Paul Petitclerc Et Fils	Ferme Jacobs	71 Rang St-Francois Est	Cap-Sante	QC	g0a1l0
9072	Ferme Jacobs, Ty-D Holsteins, Kilian Theraulaz, Ferme Antelimarck, C&f Jacobs	Ferme Jacobs	71 Rang St-Francois Est	Cap-Sante	QC	g0a1l0
9075	Ferme Jacobs Inc & Colganados Genetics LLC	Ferme Jacobs	71 Rang St-Francois Est	Cap-Sante	QC	g0a1l0
9081	Ferme Jacobs & Pat Conroy	Ferme Jacobs	71 Rang St-Francois Est	Cap-Sante	QC	g0a1l0
1006	Pierre Boulet	Ferme Pierre Boulet	766 Boul TachÃ© Ouest	Montmagny	QC	G5V 3R8
7903	Yvon Sicard and Ferme Blondin	Ferme Sicy	241 Rue GagnÃ©	St-Justin	QC	J0K 2V0
2959	Yvon Sicard, Pierre Boulet, Mathieu Chartrand & Kelly Hardy	Ferme Yvon Sicard	3790 De Rougemont	Trois-Rivieres	QC	G9B 2A7
5535	Yvon Sicard, Pierre Boulet and A&r Boulet	Ferme Yvon Sicard	241 Rue GagnÃ©	St-Justin	QC	G9B 2A7
9699	Fier-View\ Russ& Heather Thyen	Fier-View\ Empty-Pockets	18928 Minnesota Hwy 4	Grove City	MN	56243
8013	Fischerdale Syndicate	Fischerdale Holsteins	1485 Range Trail	Verona	WI	53593
8333	Andy Stuewe & Corey Feltmann	Flower-Brook Registered Holsteins	15335 Martha St.	Hamburg	MN	55339

List of Exhibitors - Holstein

id	Name(s)	Farm Name	Address	City	State	Zip
9282	Dusty & Nicole Schirm & Silver-Mist	Franchise	11304 Wheeler Rd	Ashville	OH	43103
7859	Samantha Gambonini	Gamlake Dairy	7149 Lakeville Highway	Petaluma	CA	94954
9321	Greg, Kimberly & Kayla Moret	Gbm Holsteins	32861 St Highway 27	Prairie Du Chien	WI	53821
9583	Heath & Payton Gibbs	Gibbs Holsteins	9482 Bierman Rd	Epworth	IA	52045
9566	M, E & N Gilbertson, G & H Flannery and H Reeson	Gildale Holsteins	605 First Ave	Hollandale	WI	53544
1227	Gilbert Teixeira	Gil-Tex	5601 Mt. View Rd.	Turlock	CA	95382
5254	Glamourview-lager & Walton	Glamourview-lager & Walton	9847 Woodsboro Pike	Walkersville	MD	21793
1522	Brooke Morgan Clark of GMC Farm	GMC Farm	PO Box 34	Cornish Flat	NH	03746
978	Golden Oaks Farm	Golden Oaks Farm, LLC	P.O. Box 37	Wauconda	IL	60084
6162	Tessa VL & Stella RB Schmocker	Go-Sho Cattle Co	11729 N Warner Rd	Whitewater	WI	53190
8388	D & N Schmocker, R Sabo & Legendholm Holsteins	Go-Sho Cattle Co	11729 N Warner Road	Whitewater	WI	53190
9035	Graisson Schmidt, Garrett Schmidt, Ronald Deboer	Grai-Rose	Po Box 895	Riverdale	CA	93656
9434	Xander Harris	Harrisdairyland	85n400w	Richmond	UT	84333
939	Heatherstone Enterprises, Inc.	Heatherstone Enterprises, Inc.	55455 State Rd 136	Baraboo	WI	53913
9227	Andrew Hetke, Eric Wetenkamp, and S & C Holschbach	Heatherstone Enterprises, Inc.	55455 State Rd 136	Baraboo	WI	53913
1323	Nick & Jessica Sarbacker and Matthew & Lauren Evangelo	Heritage Holsteins	10501 State Road 59	Whitewater	WI	53190
2454	Brett Hildebrandt	Hildebrandt Family Farms LLC	N2963 Cty Rd R	Hustisford	WI	53034
9411	Hodglynn Holsteins	Hodglynn Holsteins	4877 Highway 9	Kincardine	ON	N2z2x5
2147	Morgan Olbrich	Holbric Holsteins	1213 Route 23	Harvard	IL	60033
8537	Elena Olbrich	Holbric Holsteins	1213 Rt. 23	Harvard	IL	60033
9595	Olivia & Kaden Horn	Hornland Farms	N6952 County Road K	Loyal	WI	54446
3252	Cory Schmidt	Intrigue	54648 145 St	Cosmos	MN	56228
8974	Korey Oechsle & Hayden Stookey	Jacher Holsteins	11247 Wren Landeck Rd	Van Wert	OH	45891-9234
3188	J M Valley Holstein	JM Valley Holstein	296, Rang St-Joseph	Amqui	QC	G5J 3N5
8861	Allyndale, Mb-Luckylady, Jm Valley, S. Gendreau	Jm Valley Holstein	296, Rang St-Joseph	Amqui	QC	G5J 3N5
7177	Trace Johnson	Johnson-Five Holsteins	6431 State Line Rd	Poplar Grove	IL	61065
767	Mikayla Knorn	Junion Homestead Farm LLC	E1939 County Road K	Casco	WI	54205
4384	Kimberly Keller	Kellercrest Registered Holsteins, Inc.	1141 County Road JG	Mt. Horeb	WI	53572
9133	Kingsway Farms	Kingsway	8291 County Road 30 Rr2	Hastings	ON	K0L1Y0
9015	Jacob Kline	Klinedell Farms	610 South Ramona Road	Myerstown	PA	17067
1574	Ernest Kueffner	Kueffner Holsteins & Jerseys	431 Potomac Street	Boonsboro	MD	21713
8112	Jacob Menzi	Lantland Farms	1323 Crans Road	Millport	NY	14864
3681	Ryan Lauber	Lauber Farm	612 55th Drive	Union Grove	WI	53182
6777	Ryan Lauber, Team Holsteins & Ben Wallace	Lauber Farm	612 55th Drive	Union Grove	WI	53182
5634	Megan R Lauber	Lauber Farms	612 55th Dr	Union Grove	WI	53182
9313	Legendholm Holsteins	Legendholm Holsteins	N3763 Vanden Bosch Rd	Freedom	WI	54130
7351	Regan Demmer	Le-O-La Holsteins	6222 Sundown Road	Peosta	IA	52068
4757	Dana Johnson	Lida-Acres Holsteins	23314 430th Street	Pelican Rapids	MN	56572
4762	Gregory Johnson	Lida-Acres Holsteins	23314 430th Street	Pelican Rapids	MN	56572
4080	Brock Liddle	Liddleholm Holsteins	58 Tripp Road	Argyle	NY	12809
9611	Derek Liddle	Liddleholm Holsteins	58 Tripp Road	Argyle	NY	12809
1833	Anthony Liddle	Liddleholme	58 Tripp Rd.	Argyle	NY	12809
7909	Lindsay L'Amoreaux	Lindlaur Holsteins	7261 Paris Ave	Louisville	OH	44641
7546	Lookout, G Todd, G Halbach, R Rummage	Lookout	35 Minton Hill Road	Canton De Hatley	QC	J0B 2C0
9040	Lookout , Ferme Laperle	Lookout	35 Minton Hill Road	Canton De Hatley	QC	J0B 2C0
9043	B Almeida and F, C, A, L, J & H Borba	Lookout	35 Minton Hill Road	Canton De Hatley	QC	J0B 2C0
9077	Jocelyn Cote and Michael Paris	Lookout Farm	35 Minton Hill Rd	Canton De Hatley	QC	J0B 2C0
4784	Lookout and Gerald Halbach	Lookout Holsteins And Jerseys	35 Minton Hill Rd	Canton De Hatley	QC	J0B 2C0
8043	Lookout, G Todd, F & D Borba, Elite Haven	Lookout Holsteins and Jerseys	35 Minton Hill Rd	Canton De Hatley	QC	J0B 2C0
8044	Lookout, Gerald Halbach, Frank & Diane Borba	Lookout Holsteins and Jerseys	35 Minton Hill Rd	Canton De Hatley	QC	J0B 2C0
3545	Matt Engel	Luck-E Holsteins	15n638 Walker Rd.	Hampshire	IL	60140
8296	Kyle Dennis Engel	Luck-E Holsteins	15n638 Walker Rd.	Hampshire	IL	60140
1275	Scott Culbertson	Macland	4934 Hwy 247 NE	Elgin	MN	55932
6642	Scott Culbertson and T&L Cattle Company	Macland	4934 Hwy 247 Ne	Elgin	MN	55932
1375	Keith P Mahoney	Mahoney Holsteins	10292 335th St.	Cannon Falls	MN	55009
1339	Majestic View Genetics	Majestic View Genetics	3012 Providence St	Sun Prairie	WI	53590
7866	Maple Downs Farms II	Maple Downs Farms II	167 Amelia Lane	Middleburgh	NY	12122
8807	Tanner Schmaling	Maple-Leigh	N4556 County Road P	Delavan	WI	53115
9181	Marshland Farms Inc.	Marshland Farms	2419 State Road 87	Cushing	WI	54006
254	Chris & Jennifer Hill	MD-Hillbrook	8517 Orndorff Rd	Thurmont	MD	21788
9223	Mallory Nifong	Me-Do Meadows	3516 S Dickey Rd	Orfordville	WI	53576
9876	Robert L Meier	Meier Dairy	N8887 Schilt Road	Belleville	WI	53508
1457	Tyler J. Meyer	Meyervilla Holsteins	830 E Geneva St	Delavan	WI	53115
9743	Michael Paris & Jocelyn CÃtÃ	Michael Paris & Jocelyn CÃtÃ	46 Rue Lecours	St-Christophe D'arthabasca	QC	G6R1P2
973	Jennifer King	Midas-Touch Genetics	69 Halfway House Rd	Waddington	NY	13694
1622	Emily Mikel	Mikelholm Holsteins	6321 E Bethany Leroy Rd	Stafford	NY	14143
8090	MilkSource Genetics, LLC	Milk Source Genetics	N3569 Vanden Bosch Road	Kaukauna	WI	54130
9167	Shaun T Jens and Savannah R Barts	Mission-Bell Dairy Farm	W4089 Cty. Rd. V	Sheboygan Falls	WI	53085
6719	Walker & Carter Behnken	Mohrview Farm, Inc.	12101 Pawnee Road	Omaha	NE	68142
9550	Madison Borchardt	Moo-Dy Acres	W4370 Wien Dr	Edgar	WI	54426
3817	Norman E. Nabholz	Nabholz Farm	24807 Neon Rd	West Union	IA	52175
325	Shawn Nehls	Nehls-Valley	N3365 Level Valley Rd	Hustisford	WI	53034
8219	Oakfield Corners Dairy	Oakfield Corners Dairy	3650 Batavia-Elba Townline Rd	Oakfield	NY	14125
9441	Olivia & Lillian Finke and Ruth Baumbauer	Oakvale	1285 Sr 29 Ne	London	OH	43140
9503	Ocean View Genetics	Ocean View Genetics	4274 Weier Lane	Deerfield	WI	53531
9220	Joseph Opsal	Opsal's Ridge Registered Holsteins	3017 North Road	Blue Mounds	WI	53517
9370	Todd and Mary Stanek	Our-Favorite Holsteins	E12600 County Road Jj	Fall Creek	WI	54742
258	Ourway Holsteins	Ourway Holsteins	W2303 Alpine Rd	Brooklyn	WI	53521
8561	Dakota Brown	Ourway Holsteins	W2303 Alpine Rd	Brooklyn	WI	53521
5648	Ashlyn C. Wolfe	Ovaltop Holsteins	436 Chyle Road	Richfield Springs	NY	13439
9120	Makayla & Kaleb Osinga	Overside	16257s Us Hwy 281	Hico	TX	76457

List of Exhibitors - Holstein

id	Name(s)	Farm Name	Address	City	State	Zip
9121	Kylie Osinga	Overside	16257s Us Hwy 281	Hico	TX	76457
3157	Matthew Pacheco	Pacheco Dairy, Inc.	19950 W. Belmont Ave.	Kerman	CA	93630
8911	Alexis C Papageorge	Pappys Farm	1594 West Farr West Dr	Farr West	UT	84404
9793	Ella M Hlavaty	Pa-Stonemill Farm	141 Reifsnnyder Road	Lititz	PA	17543
8058	Brooke & John Carey	Plum-Line Holsteins	176 Carey Lane	Titusville	PA	16354
8062	Brooke Carey	Plum-Line Holsteins	176 Carey Lane	Titusville	PA	16354
9878	Precision Genetics	Precision Genetics	49476 Yale Road	Chilliwack	BC	V4Z 0B2
9362	M, M & M Price and A & B Ekovich	Prestige Genetics	3143 N 1780 E Rd	Martinton	IL	60951
9102	Kanani Price and Kristopher Ackley	Price-View	3535 W 700 S	Jonesboro	IN	46938
9123	M. Sprecher, K Zapalac & S Paulson	Pv Boarding	W5816 State Rd 60	Arlington	WI	53911
8436	Kaylie Zapalac and Melissa Sprecher	Pv Boarding	W5816 State Rd 60	Arlington	WI	53911
9168	Quietcove Holsteins	Quietcove Holsteins	17932 Fryburg East Rd	Wapakoneta	OH	45895
9169	Lilly Elsass	Quietcove Holsteins	17932 Fryburg East Rd	Wapakoneta	OH	45895
8961	Addison & Jacob Raber	Raber Farms	6654 E 1200 N Road	Gridley	IL	61744
9068	Shelby Rader	Rader Show Cattle	9684 Us Hwy 322	Conneaut Lake	PA	16316
4473	Jacob & Jared Dueppengiesser	Ransom-Rail	7835 Butler Rd	Perry	NY	14530
5572	Alissa M Maier	Redline	11477 200th Street	Jim Falls	WI	54748
2158	Regancrest Holsteins LLC	Regancrest	1095 Hwy 9	Waukon	IA	52172
2972	Michael R Wolf	R-E-W Farm	1152 Trumbull Hwy	Lebanon	CT	06249
9291	Reyncrest Farm	Reyncrest Farm	9666 Alleghany Rd	Corfu	NY	14036
9347	Hailey, Allison, Jack, & Chloe Zernicke	Rosedale	3066 Cty Rd G	Oxford	WI	53952
9335	D Hovden, M Mitchell, F&D Borba and Rosedale	Rosedale Genetics	3066 Cty Rd G	Oxford	WI	53952
9336	Dan Hovden, F. & D. Borba & Rosedale	Rosedale Genetics	3066 Cty Rd G	Oxford	WI	53952
9303	Stephen & Patrick Maddox	Ruann Dairy	12863 W. Kamm	Riverdale	CA	93656-9761
7965	Dylan & Cameron Ryan	Ryan-Vu Holsteins	N4067 Twin Oaks Drive	Fond Du Lac	WI	54937
9179	Wayne & Samantha Giese	Samway Dairy	F1761 Huckleberry Road	Edgar	WI	54426
6807	Ron Roskopf	San-Ron Holsteins	N7730 Dairyland Drive	Sheboygan	WI	53083
8181	Ken & Kathy Elliott and Ronald Roskopf	San-Ron Holsteins	N7730 Dairyland Drive	Sheboygan	WI	53083
1911	Christopher Savage	Savage-Leigh	8728 Dollyhyde Rd.	Union Bridge	MD	21791
3598	Chase Savage	Savage-Leigh	8728 Dollyhyde Rd	Union Bridge	MD	21791
9599	Rodney Bohnhoff	Scenic-Edge Holsteins	N4297 Cedar Lane Rd.	Plymouth	WI	53073
8734	Schwendimann Farms	Schwendimann Farms	5950 Clover Rd	Hartford	WI	53027
6121	Nicole Pralle	Selz-Pralle Dairy	N4621 Hwy 12	Humbird	WI	54746
9009	Quietcove Holsteins & Kurt Wolf	Shadow-W Holsteins	B602 Co Rd 17b	New Bavaria	OH	43548
9874	Dylan Brantner	Show-Mar	1510 Mars Evans City Rd	Evans City	PA	16033
6439	Show-N-Style Cattle Co and K. Luchterhand	Show-N-Style Cattle Co.	Po Box 343	Orangeville	IL	61060
8983	Yvon Sicard, Pierre Boulet, Ferme Du Petit Chene	Sicy	241 Rue GagnÃ©	St-Justin	QC	J0K 2V0
8513	Jacob & Lauren Siemers	Siemers Holsteins	14421 Mineral Springs Road	Newton	WI	53063
9091	Jake, Connor & Lauren Siemers	Siemers Holsteins	14421 Mineral Springs Road	Newton	WI	53063
9095	Jacob Siemers	Siemers Holsteins	14421 Mineral Springs Rd	Newton	WI	53063
9585	Robb Hart and Matt MacLaury	Skyridge Holsteins	7566 Lakeport Road	Chittenango	NY	13037
9202	Wade Yardley and Travis Smith	Smith-Crest Holsteins	W7465 County Trunk Q	Watertown	WI	53098
9800	Mike and Cindy Weimer And Wade Sturgeon	Solid Gold Holsteins	154 Crossroads Church Rd	Emlenton	PA	16373
7961	Ryan K & Kayla R Sonnenburg	Sonnenbrook Holsteins	W4149 Fahey Road	Belleville	WI	53508
3456	Darcy E. Steffes	Steffes Registered Holsteins	5127 E. Bethel Rd	Elizabeth	IL	61028
1683	Jessica Stempfle	Stempfle Holsteins	16707 100th St	Maynard	IA	50655
9458	Alphie G Stoltzfus	Stolhaven	281 White Horse Rd	Gap	PA	17527
2585	Stookeyholm Holsteins	Stookeyholm Holsteins	7653 N 250 W	Milford	IN	46542
3384	Reid Stransky	Stranshome	3209 Austin Rd	Owatonna	MN	55060
7688	Benjamin Donnay	Sunkist Acres	6245 120th St	Glencoe,	MN	05533
3106	Bryce & Brant Gingerich	Sunrose Holsteins	13330 Cr 42	Millersburg	IN	46543
9451	Brant Gingerich	Sunrose Holsteins	13330 County Road 42	Millersburg	IN	46543
9457	Brad & Sophie Fuhrman & Brant Gingerich	Sunrose Holsteins	13330 County Road 42	Millersburg	IN	46543
9464	Bruce & Tricia Gingerich	Sunrose Holsteins	13330 County Road 42	Millersburg	IN	46543
3109	Sunrose Holsteins	Sunrose Holsteins	13330 Cr 42	Millersburg	IN	46543
8454	Ryan & Briana Griswold	Tag Lane Dairy	N8812 River Valley Rd	Ixonia	WI	53036
8949	Jenna Thorgerson	Thorgy-Way Holsteins	W14869 Buckhorn Road	Sheldon	WI	54766
9522	Tom-Kins Farm LLC	Tomkins Farm LLC	F 4680 Walnut Road	Edgar	WI	54426
9039	Brennan, Marissa and Logan Topp	Toppflen	5170 Lock Two Road	New Bremen	OH	45869
1761	Topp-View	Topp-View	9477 Botkins Rd.	Botkins	OH	45306
9376	Madelyn Topp	Topp-View	10356 Kohler Rd	Wapakoneta	OH	45895
9540	Triple-T, M Heath, F&D Borba and Lookout Hols	Triple-T	6948 Brush Lake Road	North Lewisburg	OH	43060
1307	Triple-T Holsteins	Triple-T Holsteins	6948 Brush Lake Road	North Lewisburg	OH	43060
3075	Triple-T Holsteins & Entourage-LC	Triple-T Holsteins	6948 Brush Lake Road	North Lewisburg	OH	43060
4320	Entourage-LC & Triple-T Holsteins	Triple-T Holsteins	6948 Brush Lake Road	North Lewisburg	OH	43060
4321	Triple-T Holsteins, Aaron Eaton & Brad Murphy	Triple-T Holsteins	6948 Brush Lake Road	North Lewisburg	OH	43060
4324	Colton Thomas and Cole & Olivia Cummings	Triple-T Holsteins	6948 Brush Lake Road	North Lewisburg	OH	43060
5916	Colton Thomas	Triple-T Holsteins	6948 Brush Lake Road	North Lewisburg	OH	43060
6093	Arnie Gruenes	Twin Spruce Farm	17565 County Road 43	Richmond	MN	56368
9012	Mitchell Coleman	Valley Jem Genetics	19566 Portofino Court	Hilmar	CA	95324
1415	Velthuis Farms LTD.	Velthuis Farms LTD.	3554 Swale Rd	Osgoode	ON	K0A2W0
3421	Timothy, Leah & Barbara Ziemba	Violet-Hill	1397 Hillside Rd	Cambridge	WI	53523
1096	Karsen Haag	Virhada Holstein	9158 Britt Valley Rd.	Mt. Horeb	WI	53572
5959	Vogue Cattle Co.	Vogue Cattle Co.	1925 County Road 26	Brighton	ON	K0K1H0
9499	Weeksdale, Frank & Diane Borba, Rocky Allen	Weeksdale	3399 Millvale Road	Pleasant Valley	PE	C0A 1E0
8952	Kaelyn, Kenadee & Keegan Weigel	Weigland Registered Holsteins	5528 High Ridge Lane	Platteville	WI	53818
9902	David & Hope Petersheim	Welsh Edge	E5633 A Sag City Rd	Viroqua	WI	54665
9147	Christopher Van Dyk & Nathan Goldenberg	West Croix Genetics	1741 190th St.	New Richmond	WI	54017
6721	Westcoast Holsteins	Westcoast Holsteins	47749 Prairie Central Road	Chilliwack	BC	v2p 6h3
9250	Westcrest Farms/ Robert & James Weston	Westcrest Farms	N8471 Thoren Lane	Watertown	WI	53094
5683	Matt & Lena Leak	Whey-Mat Holsteins	13322 N 4400 W	Cornish	UT	84308
8440	Kole & Beau Trapp and Olivia Pfaff	Wildwynde & Pfaffsway	W16080 Merlin Road	Taylor	WI	54659
9604	Bonnie Van Dyk	Willows Edge	931 140th Avenue	New Richmond	WI	54017

List of Exhibitors - Holstein

id	Name(s)	Farm Name	Address	City	State	Zip
9294	Brian Joseph Enright	Winright Holsteins	12494 County Road 3	Winchester	ON	K0C2K0
8896	Joseph, Tammy & Megan Kirchner	Wisouri	450 S. Knott St.	Memphis	MO	63555
1360	Larry & Jodi Wright	Wrightvale	11449 Lawrence 2220	Verona	MO	65769
7547	Tim Hoese and Kate Heeren	Xcaret Holsteins	12928 Dairy Ave	Glencoe	MN	55336
4650	Rhett & Shanelle Borth	Xtreme Genetics	470 South Maple St	Ellsworth	WI	54011
6528	Rhett, Shanelle, Wyatt & Garrett Borth	Xtreme Genetics	470 South Maple St	Ellsworth	WI	54011
4537	Rosalee Zehr	Zehrview Farms	19455 N 900 East Rd	Pontiac	IL	61764
5417	Mason Ziemba	Ziembarbway	6162 Dunbarton Rd	Durhamville	NY	13054
9448	Kevin & Barb Ziemba and Brian Oster	Ziembarbway	6162 Dunbarton Rd	Durhamville	NY	13054
9454	K&b Ziemba, B Oster & S Vail	Ziembarbway	6162 Dunbarton Rd	Durhamville	NY	13054
8540	Clayton Arntz		8939 Poplar Ave	Cotati	CA	94931
7585	Zach & Ally Bierschenk		6845 25th Avenue	Van Horne	IA	52346
9379	Elise & Brady Bleck		N6990 Sugarbush Rd	Glenbeulah	WI	53023
7160	Matthew Boop		1070 Ranck Road	Millmont	PA	17845
9925	Cherry Crest, Weavercoft		5135 N Elyria Rd	West Salem	OH	44287
9275	Kyle Barton		Po Box 1143	Litchfield	CT	06759
9721	Greg Cornish		2572 Edwards Road	North Fairfield	OH	44855
8195	Savannah & Kolton Crack		262 Ch De La Riviere	Richmond	QC	J0B 2H0
9900	M Decker, M Farber, S & J Swarts		71 Deckertown Tpk	Wantage	NJ	07461
3568	Doeberier, Bowen and Heath		5135 N Elyria Rd	West Salem	OH	44287
8416	Doeberier, Bowen and Dymont		5135 N Elyria Rd	West Salem	OH	44287
9415	Doeberier, Bowen, C & A Ryan, Schilling		5135 N Elyria Rd	West Salem	OH	44287
9424	Doeberier, Bowen, Conroy, Miley Holsteins		5135 N Elyria Rd	West Salem	OH	44287
9428	Doeberier, Bowen, Conroy		5135 N Elyria Rd	West Salem	OH	44287
9432	Doeberier, Bowen, Conroy, Gunkleman		5135 N Elyria Rd	West Salem	OH	44287
9924	Doeberier, Conroy, Burdette, Bowen		5135 N Elyria Rd	West Salem	OH	44287
4245	Eva Doornink		247 County Rd. Y	Baldwin	WI	54002
5801	Mike & Julie Duckett and Harvue Farms		7285 Cty Rd S	Rudolph	WI	54475
9126	Dymentholm Genetics & Devans Holsteins		468 Fallsview Road	Dundas	ON	L9H 5E2
7313	Eaton Holsteins, Brad & Cindy Murphy, and CLF, LLC		3039 Brrewer Rd.	Marietta	NY	13110
8937	Allison Galton		2146 Mill Street	Nunda	NY	14517
9003	Derek George		320 Genesee Rd	Arcade	NY	14009
8395	Dillon Gratz		18100 75th Ave Ne	Atwater	MN	56209
6097	Arnie, Ashley & Andy Gruenes		17565 County Road 43	Richmond	MN	56368
8891	Ferme Jacobs, Ferme Intense and W. Morrille		63 St-Francois Est	Cap-SantÃ©	QC	g0a110
6236	Jason J Kearns		21542 Thistle Lane	Gays Mills	WI	54631
4920	Doeberier, Bowen and Schilling		5135 N Elyria Rd	West Salem	OH	44287
6351	Wyatt Zehr		19455 N 900 East Rd	Pontiac	IL	61764
9425	Jenna Langer and Joel Kietzman		W4678 Martinson Drive	Rio	WI	53960
9570	Jm Valley , Fortale, Jp Proulx		296 Rang St Joseph	Amqui	QC	G5J3N5
9572	Jm Valley, Allyndale, Stephane Gendreau, Jp Proulx, Rodemsay		296 Rang St Joseph	Amqui	QC	G5J3N5
9942	Eaton, Clark Valley, Boulet		1040 Lundy Rd	Granville	NY	12832
9103	Kinsey Maes		102 Fox Rd	Lebanon	PA	17042
9867	John L Marchand		Box701 201 2nd Ave	Trent	SD	57065
5012	Anna Moser		394 S. Osburne	Dansville	MI	48819
9465	Joseph & Amanda Nash & Oakfield Corners		S Lyndonville Rd	Lyndonville	NY	14098
9127	David Dymont, Kathleen O'Keefe & Dusty Schirm		866 161st Street	Hammond	WI	54015
6526	Alyson & Kenlee Philips		P.o. Box 222	Lingleville	TX	76461
8905	Kenlee Philips		P.o. Box 222	Lingleville	TX	76461
2847	Justin Powell		8999 Kessinger Rd	Tremont	IL	61568
7430	M, M, & M Price and C Cunningham		3143 N 1780 E Road	Martinton	IL	60951
9342	Christian Cunningham		430 Lichau Road	Penngrove	CA	94951
9355	H & H Mclsaac and M, M & M Price		3143 N 1780 E Road	Martinton	IL	60951
9393	Ben Johnson		5224 Colsen Court	New Carlisle	IN	46552
9394	John Cunningham		430 Lichau Road	Penngrove	CA	94951
9695	Mallory Rhodes		359 Lower Middle Rd	Millport	NY	14864
9290	Darren Ropp and Delbert Dahl		26773 E 100 N	Strawn	IL	61775
8475	Rosedale Genetics and F & D Borba		3066 Cty Rd G	Oxford	WI	53952
9255	Dusty & Nicole Schirm, Lourenco Pires & Joseph Osinga		11304 Wheeler Rd	Ashville	OH	43103
9825	Ken Horn & Garrett Schmidt		W14340 W Indies Rd	Melrose	WI	54642
9826	Garrett Schmidt		W14340 W Indies Rd	Melrose	WI	54642
9509	Matthew & Kate Smith		350 McGrann Street	Green Isle	MN	55338
9539	Triple-T, Mike Heath & Jeff Brown		6948 Brush Lake Road	North Lewisburg	OH	43060
9542	Triple-T, Entourage-Lc & Tim Cummings		6948 Brush Lake Road	North Lewisburg	OH	43060
6548	Peter Vail		5 Beam Lane	Valatie	NY	12184
9365	Brandon Vieth		28752 Navajo Rd	Cashton	WI	54619
8939	Brylie Volker		12686 U Avenue	Sumner	IA	50674
7804	Grant Vosters		W1668 Huss Ct.	Freedom	WI	54130
9715	Caydee Weese		10625 W Linwood Ave	Turlock	CA	95380
9404	Stanhope-Wedgwood		3920 Lefran Rd	Cobble Hill	BC	V0R 1L4
7410	Brennan Woker		754 Dudleyville Road	Greenville	IL	62246
5836	Wolf & Heath		B602 Co Rd 17b	New Bavaria	OH	43548
9174	Carter Liette		B602 Co Rd 17b	New Bavaria	OH	43548
9873	T & L Ziemba, B Ziemba, M Day and R Halhaus		1397 Hillside Rd	Cambridge	WI	53523



MASTERSCHOICE

SEEDCORN.COM



Come visit us at booths:
2417, 2418, 2517, 2518

Let Dairy Agenda Today help you milk your advertisement for all its worth!

**Why would you
expect to advertise
once and have your
name stay in front of
customers?**

EDITOR

Melissa Hart | 517-398-1957
farm.writer@hotmail.com | Michigan

SALES STAFF

Ron Schaap | 608-334-2348
ronschaap@hotmail.com | Wisconsin
Chad Griffith | 513-543-2315
xavier12146@yahoo.com | Ohio
Mary Angelo | 417-880-5732
angelo@1791.com | Missouri

MANAGER

David Jons | 913-634-3526
david.jons@att.net | Kansas

**More EYES
on YOUR ad
when YOUR
ad is on
DAIRY AGENDA
TODAY!**

Visit www.dairyagendatoday.com





SAVE time money water



Ritchie water is smart water.

Provide fresh water for your animals, and have more left for other things in your life. See what owning a Ritchie automatic waterer can do for you at www.ritchiefount.com.

Partner to the American Dairyman since 1921.

Ritchie[®]
Fresh Water
For Life[™]

Visit Ritchie in booth EH 1405-1407

MADE IN
AMERICA
SINCE 1921



Remember when “MADE IN AMERICA” meant something? It still does

Always ask for Y-TEX® All-American® ear tags for American quality at its very best. Our All-American® tags feature an advanced polyurethane formulation for greater flexibility and durability. A long, ribbed neck to prevent breakage and allow for greater tag visibility. A flexible male button and proven Snap-Lok® collar to prevent snagging and tag-button separation. And a longer shaft to enhance air circulation around the incision site for faster healing.

So when it's time to tag your cattle, ask your retailer for the brand made with pride right here in the USA. To learn more, visit www.ytex.com or call (888) 600-YTEX.

COME BY AND VISIT
US AT THE
WORLD DAIRY EXPO
BOOTH EH4014 &
EH4015

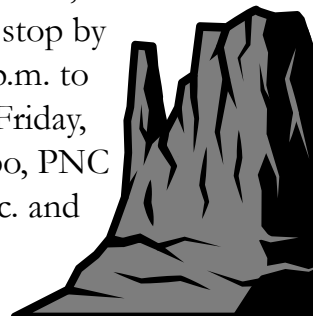


Y-TEX®, All-American® and Snap-Lok® are registered trademarks of Y-TEX Corporation.
© 2017 Y-TEX Corporation.

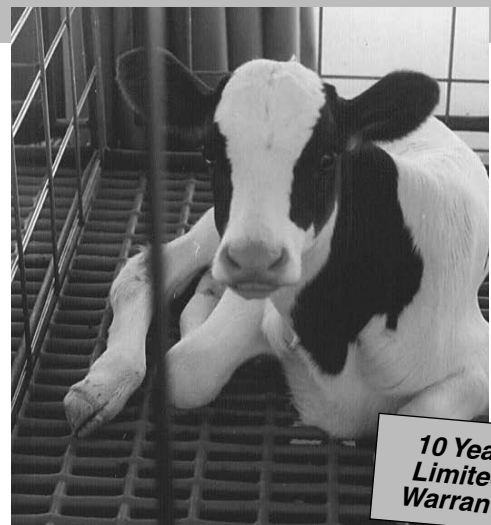
WELCOME TO THE TANBARK!

Expo's exclusive bar and grill, located on the east end of the Sale Pavilion. Full bar service from 11 a.m. to close; lunch served from 11 a.m. until 3 p.m.

A casual meeting place for attendees and exhibitors to conduct business, socialize and enjoy ExpoTV. Be sure to stop by for Happy Hour from 4 p.m. to 6 p.m., Monday through Friday, hosted by World Dairy Expo, PNC Bank, Turner Inc. and Zoetis.



Tenderfoot® Calf Flooring Systems



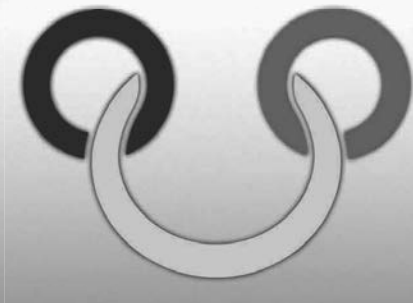
10 Year
Limited
Warranty

- Less Labor
- Healthier Environment
- Self-Cleaning Design
- Proven Durability



Tandem Products, Inc.
3444 Dight Ave S, Mpls, MN 55406

1-800-533-0509



GGI-SPERMEX
Genetics made in Germany

GGI+SPERMEX have joined forces

A genetic potential second to none!

GGI-SPERMEX is your source for bovine genetics, resulting from modern and efficient German breeding programs for the benefit of your herd. Make use of the entire width of cattle breeding "Made in Germany" for a successful future.

Visit our homepage at: www.ggi-spermex.de

Angler



Red Holstein



Holstein



Fleckvieh



Brown Swiss



Visit us at booth #140 at the Coliseum!

Ag-Link International Inc.
78 Baker Road
Tunkhannock PA 18657
Phone +1-570-836-6593
Mobile +1-570-840-8185
Email: aglinkspablo@gmail.com
Internet: www.ag-link.com/ggi/



Global Genetic Resources.
517 Main Street
Downing WI 54734
Phone +1-715-866-790-BULL (2855)
Email: globalgeneticresources@yahoo.com
Internet: <https://ggresources.com/>

Extrutech FORM Wall System
**Wall and Ceiling
 Liner Panels**

NEW PRODUCTS

Brighten Your Dairy Walls
 with Panels from
**EXTRUTECH
 PLASTICS, INC.**

- Concrete Form System
- Water and corrosion-proof
- Panels will not rust, rot or flake
- Custom cut panel kits to 20 feet
- Cleans easily - low maintenance
- Brightens the interior of any building
- Fewer seams - 2 foot wide panels
- Resists mold, mildew, bacteria growth
- 6" and 8" thick stay-in-place concrete form
- Available in a bright white, high gloss, hard surface
- Low maintenance, easy-to-clean, with water/mild cleaner
- Protective film on both sides keeps panels clean during construction



Stop by our booth to learn more about our many Products: Wall & Ceiling Liner Panels, Concrete FORM Wall System, Doors, Suspended Ceiling Panels; Our New 2 1/4" Partition Panel and New Aqua-Tank Panels!



See the new FORM construction video

888-818-0118

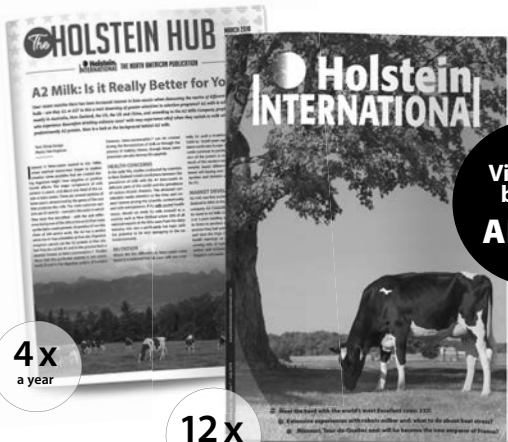
www.epioplastics.com • email: info@epioplastics.com

EXTRUTECH PLASTICS, INC.



Ask for Extrutech - Ask for the Best - The Best Surface, Shine, and Strength in the Industry!

**Holstein International
 helps you making
 the best breeding decisions**



Visit our booth
AL162

4x
 a year

12x
 a year

Your monthly source for unbiased and professional articles on Holstein bulls and cow families worldwide.

Subscribe online

WITH DISCOUNT CODE: **WDE2018**

www.holsteininternational.com

CHORE BOOT CENTRAL

**FIND THE PERFECT FIT!
 Try them on in Arena 414**



The Quatro®
Comfort Plus

*Expandable Gusset For
 Bigger Calves!*

See the full Quatro line up at the show!

The Quatro®
EXTREME

*Rated to -60°F with the comfort
 you expect from Quatro!*



Reed® Romeo & Juliet

*Slip-on comfort now in
 Men's and Women's sizes!*

Reed® Glacier

*Gel Coosh insole cushion
 with -60°F insulation*

NOW AVAILABLE IN FULL CAMO!

DUNLOP®
 PROTECTIVE FOOTWEAR

Purofort Thermo + Full Safety

*Super long lasting safety toe
 boots and rated to -58°F*

DUNLOP®
 PROTECTIVE FOOTWEAR

Purofort +

*Dunlop durability in a
 lightweight boot that's
 perfect for warm weather*

Insulated • Non-Insulated • Safety Toe • Camo • Over Shoes

**Find Your Local Dealer or Shop Online!
 800-796-5333 www.ChoreBootCentral.com**

Osnabrueck Holstein Genetics



SUPREM

ICO 4734



ROYCE

NVI 341



ROLLS

RZRobot 127



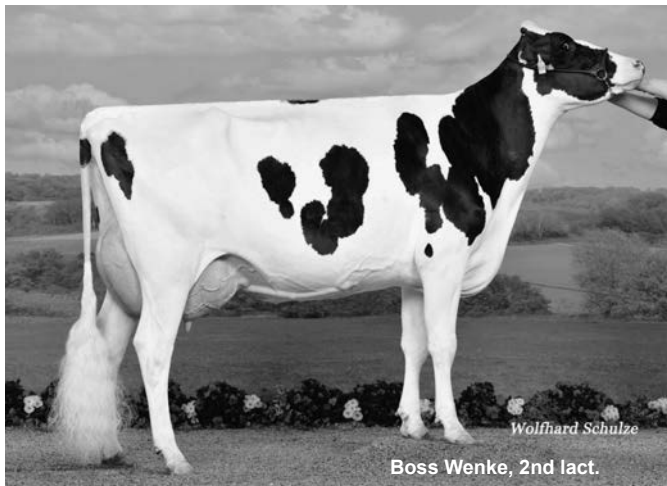
FELIX

NTM 36



KENT

+72 fat kg



JETSON

RZE 137



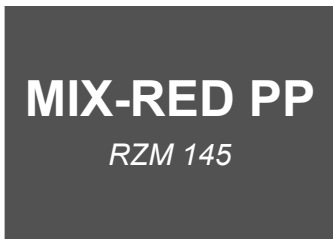
NOBEL-RED

RZFit 146



ADLON P

ISU 226



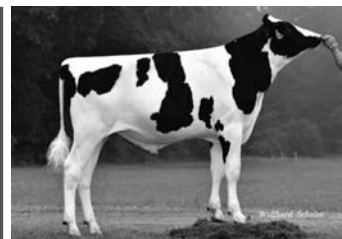
MIX-RED PP

RZM 145



HOLO PP

milking speed 121

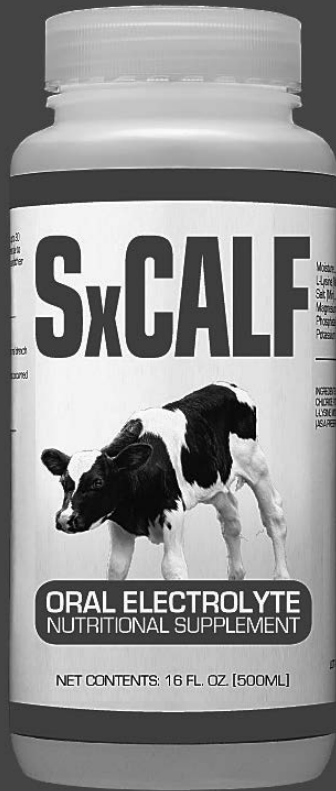


Osnabrücker Herdbuch eG
Ochsenweg 40-42
49324 Melle
Tel: +49 54 22 / 987-0
Fax: +49 54 22 / 987-100
info@ohg-genetic.de
www.ohg-genetic.de

**Breeding Center for Holsteins
in Germany**

Visit OHG booth IL312
(top floor Coliseum)

SxCALF



Oral Electrolyte Nutritional Supplement

- Rehydrates the calf and improves fecal consistency more quickly than any other product
- Requires only one oral feeding*
- Reduces mortality/morbidity up to 75% versus other products
- Saves time and labor expense
- Improves gut health
- Non-antibiotic/No VFD required

* In up to 90% of cases.

EcoPlanet Environmental, LLC

info@ecoplanetearth.com • www.ecoplanetearth.com

Contact: EcoPlanet (406) 451-9311

Agri-Sales (800) 251-1141

Visit our booth at World Dairy Expo – EH 4219



Paul WERNER INC.
Hoofcare Technology

Visit us
at Booth
Stand
TM714

Paul WERNER Inc.
17810 NW US HWY 441
High Springs, FL 32643
Phone: (386) 292 - 0708
www.hoof-trimming-tec.com
info@hoof-trimming-tec.com



THE COBURN COMPANY, INC.

Quality agricultural supplies
and milking equipment
SINCE 1925.



Milking Equipment

Barn Equipment

Cleaning & Sanitizing

Calf Raising

Animal Health

Feeding & Watering

Animal Care

Fencing

Farm & Home

COBURN.COM  

Visit us at **WORLD DAIRY EXPO** | EH 2801-2905 • EH 2703, 2704 • TC 825, 826

CLIPPER PARTS & REPAIR

IF IT CLIPS, WE CAN FIX IT!


AESCULAP



Authorized Aesculap
Distributor & Service Center.

andis



 Find us on
Facebook
Clipper Parts & Repair

Heiniger
quality + swiss made



Yes we have
**GROUND
DOWN
BLADES**

Oster

Visit us
at Booth
MC87

*Proud Sponsor of the
Youth Fitting
Contest*

**TIM SOLLMAN • 897 2-3/8 STREET • CLAYTON, WI
715-641-1057 • CLIPRFIX@AMERYTEL.NET**



booth 3007 to 3309

Come to our booth and visit your next mixer

ready to work as hard as you



www.supremeinternational.com

1-800-563-2038

Let's Get Social

Follow us on Twitter @SupremeMixer

Like our Facebook Page @SupremeInternationalLimited

Check out our photos and videos on Instagram @superinternationalLtd

FRESH, ALL-ROUND & K-BB!



COME SEE US AT WDE 2018
BOOTH AL 174B

OCONNORS POWERBALL LINDLEY VG86 - dam

Vogue Letsgo

VOGUE LETSGO ET TV TL TY CF - CA000012687225
APPLICABLE x POWERBALL P x N. UNO

GPFT +4.207 AND K-CASEIN BB WITH
OUTSTANDING TYPE & UDDER.
COMPLETE PATTERN WITH CORRECT
RUMP ANGLE, IDEAL LEGS SIDE VIEW
AND TEAT SIZE. HIGH GENOMICS BULL
BACKED BY COMESTAR LAURIE SHEIK
COW FAMILY. LETSGO DAM IS FULL
SISTER TO LABATT DAM .

GPFT	+4.207	IES €	+1173
MILK	+1240	K - CASEIN	BB
PR. %	+0,17	β - CASEIN	A1A2
FAT %	+0,22	TYPE	+3,12
LONGEVITY	120	UDDER	+4,27
GTPI	+2689	GLPI	+3410

At your side since 1974.

Intermizoo®

Why Showcase Selections?

Showcase Selections is so much more than just creating pretty cows for the show ring. It's about creating memories and it starts with a kid and a calf. For many of us in the dairy industry, some of our earliest memories are about that first show calf. The excitement, the work, the dedication, the anticipation; these are memories that last a lifetime. We have the Showcase Selections program because win, lose or draw, we hope to be part of that experience for the next kid and their calf.

Visit www.selectsires.com or talk to your Select Sires representative for a complete listing of our Showcase Selections sires.

™Showcase Selections is a trademark of Select Sires Inc. Photo by The Bullvine.



WHERE WINNING BEGINS!



YOUR SUCCESS *Our Passion.*

Phone: (614) 873-4683 ♦ www.selectsires.com