

BROWN SWISS CATTLE LOG

2-6
OCT.

THE NEXT FRONTIER

52ND
ANNUAL

★ 2018 ★
WORLD
DAIRY
EXPO
WORLDDAIRYEXPO.COM



ALLIANT ENERGY CENTER  MADISON, WI, USA



OPEN YOUR CUTTING WINDOW. AND YOUR LIFE.

HarvXtra® with Roundup Ready® Technology gives you the flexibility to manage your operation your way, and maybe even give yourself the day off.

See your alfalfa seed supplier booth for a chance to win a vacation of your choice.

HARVXTRA.
with Roundup
Ready® Technology

© 2018 Forage Genetics International, LLC. HarvXtra® is a trademark of Forage Genetics International, LLC. Roundup Ready® is a trademark of Monsanto Technology LLC, used under license by Forage Genetics International, LLC.

HarvXtra® Alfalfa with Roundup Ready® Technology is subject to planting and use restrictions. Visit www.ForageGenetics.com/legal for the full legal, stewardship and trademark statements for these products.





International Brown Swiss Show

2 p.m. Wednesday, October 3 (Heifers)
7:30 a.m. Thursday, October 4 (Cows and Groups)

Dairy Cattle Exhibitor Committee

Chair

Tom Morris, Amery, WI

Vice-Chair

Bryan Voegeli, Monticello, WI

Overall Dairy Cattle Show Superintendent

Dave Bollig, Belleville, WI

Ethics Coordinator

David Jeans, DVM, Evansville, WI

Katie Agnew, Oconomowoc, WI

Angela Brown, Dodgeville, WI

Justin Burdette, Mercersburg, PA

John Dalton, Hartland, WI

Dean Dohle, Halfway, MO

Bruce Gingerich, Millersburg, IN

Gene Hall, Jr., Cushing, OK

Lynn Harbaugh, Marion, WI

Julie Hemp, Beaverville, IL

Jennifer Hill, Thurmont, MD

Ysabel Jacobs, Cap-Sante, QC

Jason James, Mineral Point, WI

Randy Knapp, Epworth, IA

Deb Lakey, Trempealeau, WI

Billy Lattire, Lawrenceburg, IN

Sheila McGuirk, DVM, Madison, WI

Donna Mertz, DVM, Blair, NE

Roger Owens, Frederic, WI

Terri Packard, Boonsboro, MD

Christy Ratliff, Garnett, KS

Mark Rueth, Oxford, WI

Chad Ryan, Fond du Lac, WI

Boyd Schaufelberger, Greenville, IL

Rick "RT" Thompson, Darlington, WI

Phillip Topp, Botkins, OH

Bonnie Van Dyk, New Richmond, WI

Clark Vilter, Hartland, WI

World Dairy Expo's Board of Directors

President

**Alan Deming, President, East Central/Select Sires

1st Vice-President

**Bill Hageman, Jr., At-Large Director

2nd Vice-President

**Debbie Crave, At-Large Director

Secretary/Treasurer

**Michael Hellenbrand, Purebred Breeders of World Dairy Expo

Bill Barlass, Purebred Breeders of World Dairy Expo

Cliff Becker, Farm Journal Media

Dan Belk, Foremost Farms USA

Steve Blessing, Purebred Breeders of World Dairy Expo

**Dave Bollig, Overall Dairy Cattle Show Superintendent

Paula Bovre, Wisconsin Holstein Association

David Cooper, National Milk Producers Federation

Jim Crowley, Jr., Director Emeritus

Jason Danhof, Purebred Breeders of World Dairy Expo

Glen Easter, Dairy Farmers of America

Troy Esser, BouMatic

Randy Geiger, Lakeshore Federated Dairy Cooperative

Tim Griswold, Dane County Holstein Breeders

**Bob Hagenow, At-Large Director

**Dean Hermsdorf, ABS Global, WDE Commercial Exhibitor
Committee Chair

Kevin Jorgensen, Select Sires, Inc.

Ernie Kueffner, At-Large Director

Ray Kuehl, Director Emeritus

Dave Kyle, Foremost Farms USA

Steve Larson, At-Large Director

Joan Lau, At-Large Director

Julie Luedkte, Cooperative Resources International

Chuck Miller, Nasco

**Tom Morris, WDE Dairy Cattle Exhibitor Committee Chair

Boyd Schaufelberger, Holstein Association USA, Inc.

Mike Schiller, Associated Milk Producers, Inc.

Steve Strickler, Dairy Farmers of America

Kate VandenBosch, UW-Madison CALS

Clark Vilter, WI Guernsey Breeders Association

**Bryan Voegeli, Purebred Breeders of World Dairy Expo

Doug Williams, At-Large Director

**Denotes Member of Executive Committee



Judge

Steve Wagner
Richford, Vermont

Associate Judge

Christopher "Chip" Savage
Union Bridge, Maryland

Superintendent

Dave Bollig
Belleville, Wisconsin

World Premier

Brown Swiss Sale
Thursday, October 4
2 p.m.
Sale Pavilion

★ 2018 ★
**WORLD
 DAIRY
 EXPO**

Please see the World Dairy Expo Premium Book for additional Dairy Cattle Show award sponsors.



World Dairy Expo, Inc.
 3310 Latham Drive
 Madison, Wisconsin 53713 USA
 Phone: 608-224-6455 • Fax: 608-224-0300
 worlddairyexpo.com • wde@wdexpo.com
 facebook.com/worlddairyexpo • twitter.com/wdexpo
 instagram.com/wdexpo • snapchat: worlddairyexpo
 ExpoFM: 95.7 FM

Staff

Scott Bentley, General Manager
 Ann Marie Magnochi, Dairy Cattle Show Manager
 Laurie Breuch, Dairy Cattle Show Coordinator
 Crystal Ripp, Trade Show Manager
 Becky Bachman, Trade Show Coordinator
 Katie Schmitt, Communications Specialist
 Annette Ziegler, Accounting Manager
 Dawn Dommissie, Administrative Services Manager
 Cassi Miller, Program Assistant
 Laura Herschleb, Attendee Services Coordinator
 Joan Judd, Administrative Assistant

Future Dates:

Oct. 1-5, 2019 • Sept. 29-Oct. 3, 2020 • Sept. 28-Oct. 2, 2021

A special "Thank You" to all Dairy Cattle Show sponsors including:

Supreme Champion of the Open Show
 Gregory Blaska Memorial Trophy: World Dairy Expo, Inc.

Supreme Champion of the Open Show Cash Awards: BouMatic

Supreme Champion of the Open Show Royal Blanket: Agpro, Inc.

Supreme Champion of the Open Show Director's Chair:
 International Protein Sires

Reserve Supreme Champion of the Open Show Cash Award:
 Trans Ova Genetics

Reserve Supreme Champion of the Open Show Royal Blanket:
 E-Zee Milking Equipment, LLC

Reserve Supreme Champion of the Open Show Director's Chair:
 Joe & Patti Schluter

Grand Champion of the Open Show Sashes: Arethusa Farm

\$1,000 Grand Champion of the Open Show Cash Awards:
 Udder Comfort International, Inc.

Intermediate Champion of the Open Show
 One free ovum pick-up (OPU): Vytelle, LLC

Supreme Champion Heifer of the Open Show
 W. Terry Howard Memorial Trophy: World Dairy Expo, Inc.

Supreme Champion Heifer of the Open Show Cash Award:
 Trans Ova Genetics

Supreme Champion Heifer of the Open Show Royal Banner:
 Trans Ova Genetics

Reserve Supreme Champion Heifer of the Open Show Cash Award:
 Golden Calf Company

Reserve Supreme Champion Heifer of the Open Show Royal Banner:
 Golden Calf Company

Junior Champion of the Open Show Sashes: GHD

Neck Ribbons & Medallions:
 Y-TEX Corporation

Morning Coffee Cart: ABS Global and St. Jacobs ABC

Pre-Show Donuts & Coffee: Dane County Holstein Breeders

DeLaval Dairy Cattle Exhibitor Appreciation Picnic: DeLaval, Inc.

Herdsmanship Jackets & Awards: Select Sires, Inc.

Superintendent Jackets: Masters Choice Hybrids

Milking Parlor Equipment & Supplies: BouMatic

Exhibitor Hats: Agri-Plastics Mfg.

Exhibitor Welcome Bags & Milk Buckets: Nasco

Milk Receiving Tanks: Poly Dome

Barn Disinfectant: Ecolab

Cattle Check-In Apparel: Bio-Vet, Inc.

Sharps Containers: Elanco Animal Health

RFID Tag Sponsor: Datamars, Inc.

ExpoTV Broadcast: Boehringer Ingelheim, Dairy Tech, Inc.
 Madero Dairy Systems, and STgenetics

A special "Thank You" to all Junior Dairy Cattle Show sponsors including:

Junior Show Gold Sponsor: MilkSource Genetics, Trans Ova Genetics and Tom Morris Ltd.

Supreme Champion of the Junior Show Cash Award: BouMatic

Supreme Champion of the Junior Show Trailer Award: Frenchville Trailer Service, LLC

Supreme Champion of the Junior Show Royal Blanket: Select Sires, Inc.

Supreme Champion of the Junior Show Director's Chair: International Protein Sires

Reserve Supreme Champion of the Junior Show Cash Award: Udder Comfort International, Inc.

Reserve Supreme Champion of the Junior Show Royal Blanket: Ameriprint

Reserve Supreme Champion of the Junior Show Director's Chair, In Memory of Tom Lyon: Maple Lawn Farm

Grand Champion of the Junior Show Sashes: FarmFirst Dairy Cooperative

\$500 Grand Champion of Junior Show Cash Awards: Udder Comfort International, Inc.

Supreme Champion Heifer of the Junior Show Cash Award: Golden Calf Company

Supreme Champion Heifer of the Junior Show Royal Banner: Scott Culbertson

Reserve Supreme Champion Heifer of the Junior Show Cash Award: Ghost Hollow

Reserve Supreme Champion Heifer of the Junior Show Royal Banner: Ebert Enterprises LLC

Junior Champion of the Junior Show Sashes: Duane T. Cole, DDS

Junior Show Neck Ribbons & Medallions: Accelerated Genetics

Dairy Cattle Youth Exhibitor Pizza: Endovac Animal Health

THE NEXT FRONTIER

★
SHOWRING SPONSORS

TRANS OVA
genetics

SEMEX[®]

Genetics for Life[®]

Phibro
ANIMAL HEALTH CORPORATION **TM**

RAILBIRD JUDGING CONTEST

See how your placings match up to the official judges in Expo's new Railbird Judging Contest!

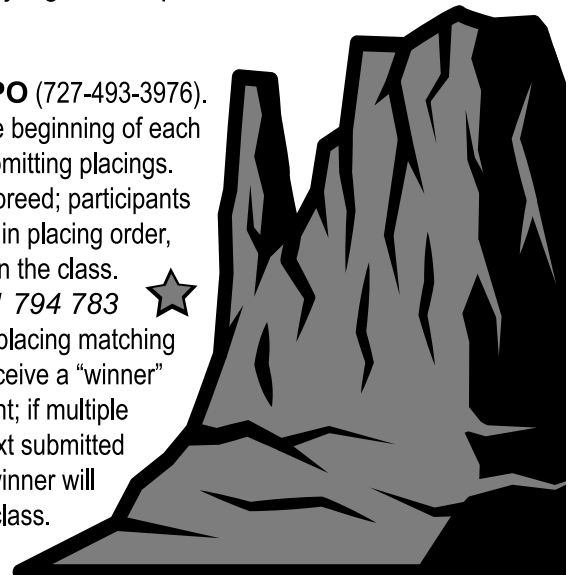
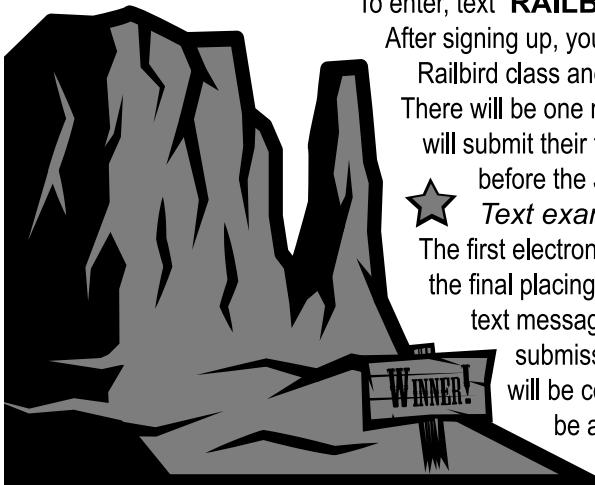
To enter, text "**RAILBIRD**" to **727-4-WDEXPO** (727-493-3976).

After signing up, you will receive an alert at the beginning of each Railbird class and given instructions for submitting placings.

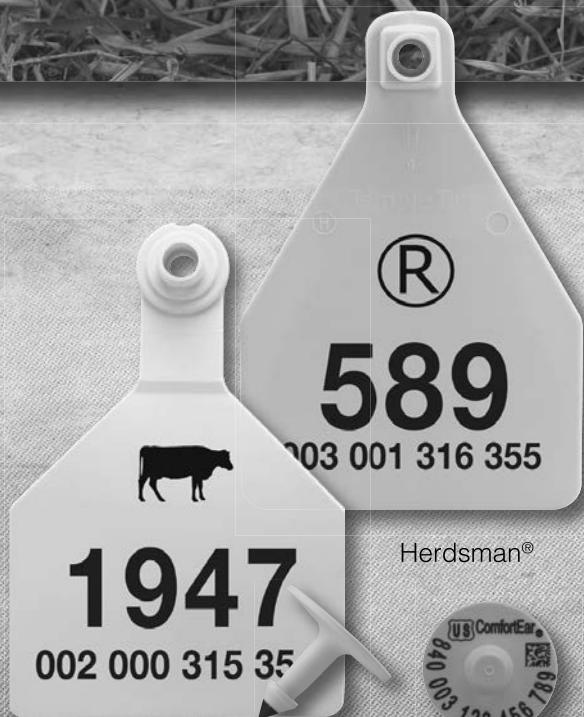
There will be one milking class selected per breed; participants will submit their top four backtag numbers, in placing order, before the Judge makes his first pull in the class.

★ *Text example: Railbird 798 781 794 783* ★

The first electronic time-stamped accurate placing matching the final placing of the official judge will receive a "winner" text message. One entry per participant; if multiple submissions are made, the last text submitted will be considered the entry. One winner will be awarded for each Railbird class.



TOUGH TAGS FOR TENDER EARS



Z2 No-Tear-Tag®

ComfortEar® 840

There are plenty of tough ear tags on the market today. But only genuine Z Tags and Temple Tags combine rugged durability with advanced design features that make it easy to tag young calves without tearing tender young ears. So this calving season, invest in the trusted tags that treat your calves with TLC – Z Tags and Temple Tags.



For more information call 800-433-3112 or contact your distributor.

© 2018 DATAMARS. Z Tags and Temple Tag are registered trademarks of DATAMARS. All rights reserved.



Solutions for Animal Health and Productivity



We know a healthy herd is a productive one. Our comprehensive portfolio of dairy offerings includes proven and effective solutions that help you address important challenges and optimize the opportunity to support the health and productivity of your cows.

Providing you products such as:

Nutritional Specialties, Mineral Nutrition Ingredients
and Vaccines

Phibro
ANIMAL HEALTH CORPORATION TM

AB20

Animate

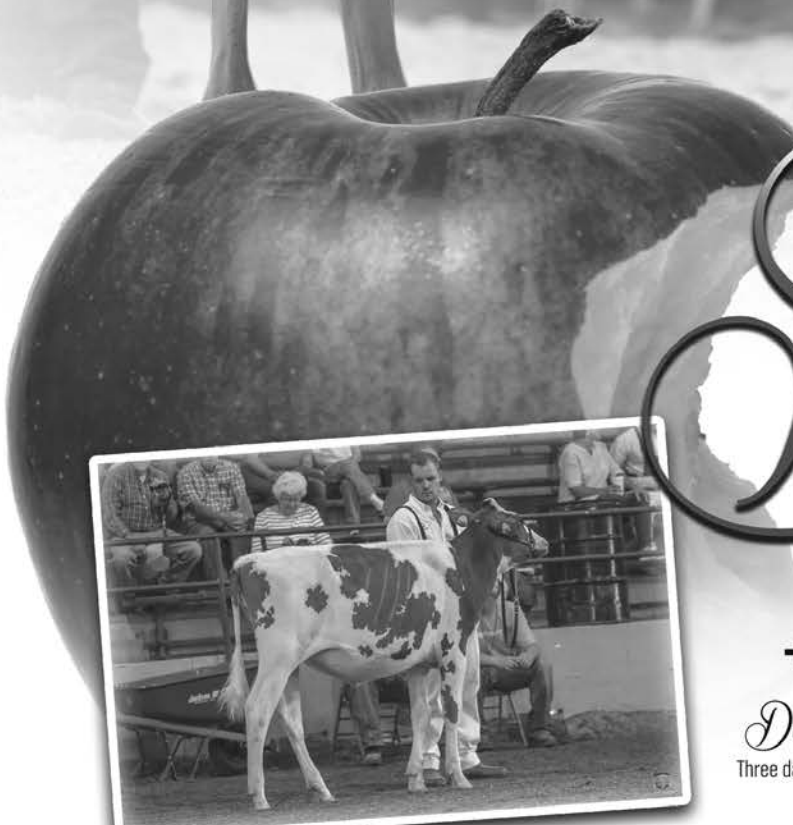
cellerate
YEAST SOLUTIONS

OmniGen-AF

GemStone



>>DTR: **INTENSE DEVOUR POUTINE-RED**
Res Jr. Champion & 1st Intermediate Calf
Quebec Spring Red Holstein Show- 2018
Owned by: Westcoast Holsteins, BC



Devour^{RC}

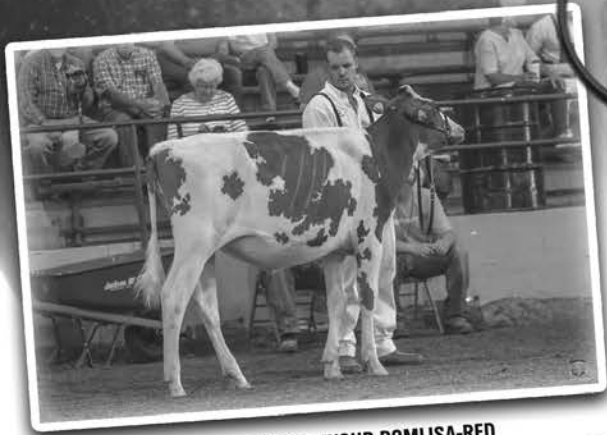
14H07802

HIGH OCTANE ♣ (EX-94-2E-EX-MS) DESTRY
(EX-94-2E-EX-MS) TALENT ♣ (EX-96-4E-EX-MS-DOM) APPLE

+3.06 PTAT
+3.55 UDC | +4.94 RUH | +4.54 RUW

Devour comes from an All-American family and his seven closest dams average 94.6 points. Three dams have 12 All-American nominations under their belt, they have proven they transmit to the next generation. DEVOUR this line of the Apple family to make the next GREAT RED ONE!

CONTACT YOUR LOCAL REPRESENTATIVE TODAY!



>>DTR: **INTENSE DEVOUR POMLISA-RED**
1st Place Winter Heifer Calf | Ohio State Fair Red & White Show- 2018
Owned by: Alyson & Kenlee Philips

Accelerated Genetics®



Kleen Flo Inflations

Compatible with Conewango and Milk-Rite Inflations

This rubber is FDA compliant and has been specifically engineered for the Kleen Flo Liners and are “Phthalates Free”. Soft and Responsive in relation to pulsation signals and maintains an excellent teat massage. Kleen Flo Liners are designed for High Performance, Consistency, Quick Break in time and a great Vacuum shut-off

FOR 06 SHELL			
<p>25076 - Kleen Flo TLC-D1 Compatible with: Conewango ID-T1, Milk Rite TLC-D1</p> <p>25077 - Kleen Flo TLC-D1-V - vented Compatible with: Conewango ID-T1-V, Milk Rite TLC-D1-V</p> <ul style="list-style-type: none"> NARROW BORE LOWER VACUUM <p>Replacement for: 25050 & 25053</p>	<p>25072 - Kleen Flo 01A Compatible with: Conewango ID-01A, Milk Rite 01BU, Kleen Flo 01</p> <ul style="list-style-type: none"> NARROW BORE LARGE FLEXIBLE MOUTH PIECE to accommodate different teat sizes 	<p>25073 - Kleen Flo 01AU-LI Compatible with: Conewango ID-08E, Milk Rite 01AU, Milk Rite 01A-U-LT, Milk Rite 08E-U-LT</p> <ul style="list-style-type: none"> MEDIUM/NARROW BORE LOW SUP MEDIUM MOUTH <p>Replacement for: 25011, 25010 & 25010</p>	<p>25075 - Kleen Flo 01D Compatible with: Conewango Jersey ID-01D, Milk Rite Jersey</p> <ul style="list-style-type: none"> NARROW BORE SMALLER FIRM MOUTH LOW SUP <p>Replacement for: 25037</p>
FOR SS BM SHELL		FOR BIO	FOR PLASTIC UN SHELL
<p>25086 - Kleen Flo BM400M Compatible with: Conewango IB-LB, Milk Rite BM 400M</p> <p>25087 - Kleen Flo BM400M-V - vented Compatible with: Conewango IB-LB-V, Milk Rite BM 400M-V</p> <ul style="list-style-type: none"> LOW SUP LARGE BORE REINFORCED LINE <p>Replacement for: 25019 & 25020</p>	<p>25092 - Kleen Flo 004U Compatible with: Conewango IW-004, Milk Rite 004U</p> <ul style="list-style-type: none"> NARROW BORE MILKS FAST & CLEAN <p>Replacement for: 25024</p>	<p>25096 - Kleen Flo IU-282 Compatible with: Conewango IU-282, Milk Rite 282U, Milk Rite IU-282, Milk Rite 282U-LT</p> <ul style="list-style-type: none"> NARROW BORE FLEXIBLE MILK TUBE LOW SLIPPAGE <p>Replacement for: 25031</p>	

We trust you will be happy with the Kleen Flo Liners. If not we will issue a full credit if returned within 30 days of sale. Offer good through 2018

“PHATHALATES FREE”

STOP BY OUR BOOTH FOR A FREE SAMPLE TODAY.

STOP BY OUR BOOTH AND SEE OUR RAPID EXIT PARLOR

REQUEST A COPY OF OUR 2018 PARLOR CATALOG!



Booth EH2811-2911

Offices in Gordonville, PA and McFarland, WI
For more information on Custom Parlor Packages contact us at:
800-729-4118 info@ezmilking.com www.ezmilking.com



Time. Labor. Fuel. Feed. Save on all of these with our EXCLUSIVE Balanced Flow™ Technology.

Don't Just Feed...





GENUINE CERTIFIED HARVESTORE PARTS

- > Engineered Specifically for Harvestore Systems and Unloaders
- > 67+ Years of Experience
- > Local Authorized Dealer Network
- > Competitively Priced
- > Long Lasting
- > Best Warranty in the Market



NEW CHAINS



NEW BREATHER BAG



NEW GEARBOX

QUALITY FEED FROM QUALITY PRODUCTS

CST's Harvestore® BLUEPRINT Parts represent the finest quality and service for your Harvestore System. Don't settle for sub-standard after-market parts. Get Harvestore BLUEPRINT Parts, the only parts specifically engineered and manufactured for your Harvestore System.

Join Us at
World Dairy Expo
Booth #1201-1303
**ENTER TO WIN
OUR RAFFLE!**

- > **Cutter and Conveyor Chains for XL 200, XL 400, Alliance and Goliath Unloaders**
 - Smooth bearing surfaces
 - Laser-cut finished pitch holes
 - Shot peened sidebars
 - Proprietary steel alloys
 - Case hardened pins & bushings
 - Heat treated sidebars
 - Pre-lubricated joints
- > **Breather Bags**
 - Individual grommeted mounting tabs
 - Heavy-duty material withstands 2x greater pressure & pull force
 - 3-year warranty - Ask your local dealer
 - 3x stronger than competition after exposure to caustic conditions
- > **Gearbox**
 - Extended bearings for better drive shaft support
 - Regreasable bearing that prevents bearing contamination
 - Integrated drive shaft for reduced clearances & improved gearbox life

CST Industries | 345 Harvestore Drive | DeKalb, IL 60115 | 844-44-TANKS | harvestore.com



Reduced aerobic spoilage and improved silage bunk life

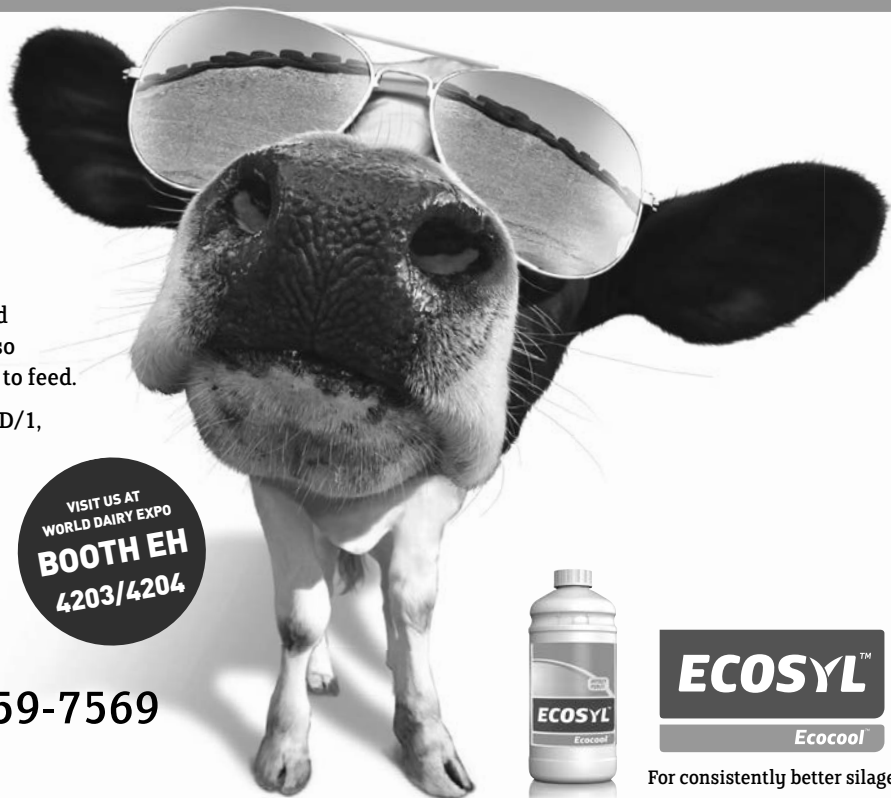
How cool is that?

Ecocool improves fermentation and reduces aerobic spoilage in silage so there is more, better-quality silage to feed.

- Contains *L. plantarum* strain MTD/1, the world's most proven *Lactobacillus* strain
- Plus *L. buchneri* strain PJB/1 for improved feedout and bunk life

VISIT US AT
WORLD DAIRY EXPO
**BOOTH EH
4203/4204**

Telephone 800-759-7569
www.ecosyl.com



For consistently better silage

Visit us at
EH 2011



Cow Comfort Solutions



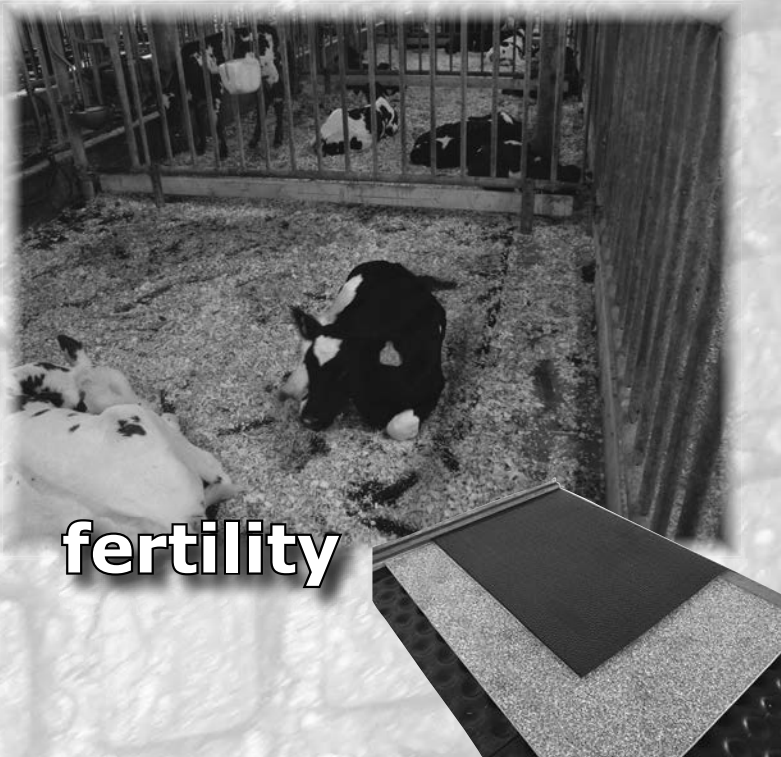
milk yields



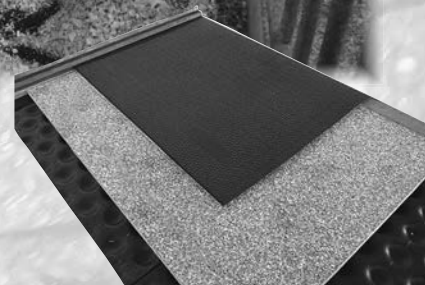
hoof health



lying time



fertility



Agromatic INC

(800) 800-5824
www.agromatic.net
Fond du Lac, WI

Purple Cow Gift Shop

Located on the north end of the Exhibition Hall lobby, the Purple Cow will be open from 9 a.m. - 6 p.m. Tuesday through Friday and 9 a.m. - 4 p.m. on Saturday. Bring your list and shop early for the largest selection!



World Dairy Expo's
Official Gift Shop



UDDER TECH



VISIT OUR BOOTH ARENA BUILDING #500
or SHOP ONLINE: UDDERTECHINC.COM
888.438.8683



UDDER TECH

**FREE SHIRT WITH
\$50 ORDER AT OUR BOOTH
AT WORLD DAIRY EXPO**

*WHILE SUPPLIES LAST



Get your fix just outside
the Coliseum at the
grilled cheese stand.

Featuring award-winning AMPI cheese.



www.ampi.com
800-533-3580

Stop by the AMPI booth,
Exhibition Hall #4407,
to learn more about the
dairy farmer-owned
cooperative behind the
delicious cheese.

YOUR PARTNER FOR:
DAIRY, BEEF
AND GOAT GENETICS

DAIRY BREEDS



HOLSTEIN



BROWN SWISS



PIE ROUGE



NORMANDE

HIGH POTENTIAL BEEF BREEDS



CHAROLAISE



LIMOUSINE



BLONDE D'AQUITAINE



PARTHENAISE



BAZADAISE



ROUGE DES PRÉS

HARDY DAIRY BREEDS



ABONDANCE



TARENDAISE

GOATS



ALPINE



SAANEN



BOER

CROSSING BEEF BREEDS



CHAROLAIS EXCELLENCE



INRA 95



LIMOUSIN



BLOND

HARDY BEEF BREEDS



AUBRAC



GASCONNE



SALERS

LE FRENCH TOUCH

reliability & performance

COME VISIT US AT OUR BOOTH AL 221-222 AT WORLD DAIRY EXPO, MADISON !

The new DeLaval VMS™ V300 milking robot

99.8%
Attachment rate

Up to
50%
faster
attachment
time

Up to
7500 lbs
milk per day

10%
Higher capacity

**IT ALL REVOLVES
AROUND YOU**

We live milk



www.delaval.com

★ 2018 ★
**WORLD
DAIRY
EXPO**

Visit our booths
EH3011-3315 & TM754

LEGEND.

They say with age comes wisdom.

Well, when the business is passed down over 5 generations, wisdom is something you're born into. But you're responsible for adding value beyond that inheritance. It's your progressive thinking that leads to the next generation of our product.

Creating "Legendary" is a modern day practice.

**VISIT US AT
WORLD DAIRY EXPO
OCT. 2-6
BOOTH EH 2008-2309**



calf-tel.com

**SHOP CALF-TEL ACCESSORIES
NOW AVAILABLE ONLINE**



HEART MEETS SMART

© 2018 HAMPEL - ALL RIGHTS RESERVED

Class **305 Spring Heifer Calf**

Born 03/01/2018 - 05/31/2018

Premiums: \$110, 90, 80, 65, 55, 50, 45, 45, 40, 40, 35, 35, 30, 30, 15, 10, 10

1st Place Award presented by Long Lane Farms, Roger & Brian Nierman, Brownstown, IN

Bred & Owned Award presented by Ohio Brown Swiss Association

Junior Premiums: \$30, 20, 15, 10, 5

Junior Award presented by Armbruster Bros. Farms, Inc., the Armbruster Family, Muscodia, WI

1670	Pine-Tree 7082 Hami 7998-ETV D-01-09	120 7,987	4.1%	324	3.2%P	254P	05/25/2018	B&O	S-Jo-Lane Dario Hampton-ET D-Pine Tree Driver Atlanta-ETV	Matt Steiner Marshallville OH
*1671	Hager Hill Fantale Everleigh D-04-04	144 13,525	4.1%	483	2.9%P	396P	03/24/2018		S-Classic Jet Fantale Imp-ET D-Jaden Carter Elegance	Roslind & Riley Anderson Ellsworth WI
1672	Top diMark Cali100 B Wizzy 2						03/24/2018	B&O	S-Jobo Wonder Bosephus-ET D-Top Acres Hp B Wizer-ETV	Carol Regusci and Louie Oliveria Modesto CA
1673	Md-West-View Carter Sassy						03/22/2018		S-Voelkers TD Carter D-Md-West-View Sapphire-ET	Alexis Sherry New Castle PA
1674	Whitland W Snowmore						03/17/2018	B&O	S-Top Acres Winmore-ET D-Whitland Trump Snowin-ET	Justin Whitney Fort Ann NY
1675	Quality Quest Moon Rae						03/14/2018	B&O	S-La Rainbow B Moonlight D-Quality Quest Rebecca	Paul & Cynthia Magnussen Fort Atkinson WI
1676	Meado-Brook Fast Kasablanca D-02-07	305 19,700 319 20,440	4.2%	819 859	3.7%P 3.7%P	729P 760P	03/12/2018	B&O	S-Brown Heaven R Fast&Furious-ET D-Sun-Made SD Suprm Kaylee-ET	Mitch Kappelman Manitowoc WI
1677	Cutting Edge B Frozen-ETV D-06-05	305 25,660 365 29,750	4.5%	1,144 1,304	3.4%P 3.4%P	880P 1,021P	03/10/2018	B&O	S-Jobo Wonder Bosephus-ET D-Round Hill Legacy Flyhi-ET	Ken Main and Peter Vail Copake NY
*1678	Cutting Edge S Diva-ETV D-03-04	305 19,420 306 19,450	5.0%	975 978	3.9%P 3.9%P	765P 766P	03/09/2018	B&O	S-Cutting Edge Seaman D-Cutting Edge T Delilah	Kyle Barton Ancramdale NY
*1679	Autumn Creek Thunder Pandora D-08-05	195 13,319	3.1%	419	3.3%P	440P	03/07/2018	B&O	S-Cutting Edge Thunder D-Fair Hill Parker Promise Et	Nicholas Love Scottdale PA
1680	Blessing Garbro T Page ET D-03-09	305 28,150 365 31,970	4.7%	1,332 1,480	3.4%P 3.4%P	947P 1,081P	03/07/2018	B&O	S-Cutting Edge Thunder D-Sun-Made GB Pretzel-ET	Blessing Farms and Garrison Bros. Fort Wayne IN
*1681	Cutting Edge S Dazed-ETV D-03-04	305 19,420	5.0%	975	3.9%P	765P	03/07/2018	B&O	S-Cutting Edge Seaman D-Cutting Edge T Delilah	Kyle Barton Ancramdale NY
1682	Jaden To Die For						03/07/2018	B&O	S-Sunnyisle Total-ET D-Jaden Rich Dorito	Hayden Hauschildt Ellsworth WI
1683	Alba Gen Pimprn Coca Twin						03/06/2018	B&O	S-Triangle Acres B Pimprn D-Triangle Acres Alloy Joy	Mark Hornbostel West Salem IL
1684	Alba Gen Pimprn Cola Twin						03/06/2018	B&O	S-Triangle Acres B Pimprn D-Triangle Acres Alloy Joy	Mark Hornbostel West Salem IL
1685	C & A Rich Renegade						03/06/2018	B&O	S-Jo-Dee Nemo Richard-ET D-C & A Biver Rikke	Ashley Swenson Nicollet MN

1686	Port-Haven Lost Arts 2035 D-01-11 154 9,336 5.1% 474 3.7%P 342P	03/06/2018 B&O	S-BMG Breeders Lost Art-ET D-Port-Haven Deegans 1813	Thomas & Mark Portner Sleepy Eye MN
1687	Top Acres Durham Wanita-ET D-05-07 305 29,580 5.1% 1,516 3.3%P 982P 365 34,914 5.3% 1,840 3.3%P 1,163P	03/06/2018 B&O	S-Hilltop Acres W Durham-ET D-Top Acres Supreme Wizard-ET	Wayne E. Sliker St Paris OH
*1688	Autumn Creek Wizdom Katrina-ET D-02-06 25 1,800 3.8% 800 3.2%P 600P	03/05/2018 B&O	S-Top Acres Wizdom D-Cutting Edge C Kitty	Olivia & Nicholas Love Scottdale PA
1689	Blessing Bosephus Karla D-05-00 305 22,620 4.2% 949 3.3%P 741P 365 26,830 4.2% 1,116 3.3%P 896P	03/05/2018 B&O	S-Jobo Wonder Bosephus-ET D-Niermans Price Kylie	Blessing Farms Ft Wayne IN
1690	Cliff-Brook Cadence Hanna	03/05/2018 B&O	S-Shiloh Brookings Cadence-ET D-Cliff-Brook Mad Hatter-OCS	Cliff Brook Farm and Zachary Thompson South Wayne WI
1691	Indelible Winning Mylove	03/05/2018 B&O	S-Brown Heaven Winningformula-ET D-Indelible GS Miss Myra	Rose Morian Atlantic PA
*1692	La-Foster Chili Pep Dharma	03/05/2018	S-Voelkers Wndt Chilli Pepper D-Dublin-Hills Donut	Ryan Lawton Newark Valley NY
*1693	Autumn Creek Thunder Foxy-ET	03/04/2018 B&O	S-Cutting Edge Thunder D-Autumn Creek Brook Frisky	Olivia Love Scottdale PA
1694	Brook Hollow FF Sugar Pants	03/04/2018 B&O	S-Brown Heaven R Fast&Furious-ET D-Brook Hollow Smartie Pants	Delbert & Heather Yoder West Salem OH
*1695	Nor-Bert Cadence Silver Lining	03/04/2018 B&O	S-Shiloh Brookings Cadence-ET D-Nor-Bert Thunder Silverflake	Dalton, Dillon & Breanne Freeman Bremen IN
*1696	Open-Road Stryker Wanna-Be D-02-05 125 7,375 3.3% 235 3.1%P 217P	03/04/2018 B&O	S-Maverick Mr Nemo Stryker D-Top Acres Braien Winzit-ET	William Hughes Killbuck OH
1697	Siegrets Winmore Brownberry	03/04/2018	S-Top Acres Winmore-ET D-Siegerts Jack Blackberry	Leslie & Linda Bruchey Westminster MD
*1698	Dublin-Hills Saoirse	03/03/2018	S-Top Acres Wizdom D-Dublin-Hills Sassenach Et	Jacob B. Johns Chapel Hill TN
1699	M&M T Sweetie	03/03/2018	S-Cutting Edge Thunder D-M&m Kingpin Sierra	Tammy Voegeli and Louis & Garen Oliveira Arlington WI
1700	Round Hill Braiden Wiley-ET	03/03/2018	S-Blessing Tex Braiden-ET D-Top Acres Garbo Wanda-ET	Leslie & Linda Bruchey Westminster MD
1701	Brown Heaven Bigstar Florence	03/02/2018	S-Zumbuhl's Big Star D-Lentjeroche Vigor Flower	Fred Mathys Wawanesa MB
1702	Just So F Whistler	03/02/2018	S-Brown Heaven R Fast&Furious-ET D-Just So W Whistle	Karen Bejster Spring Valley IL
1703	Kulp-Terra Hilton Castle-ET D-02-02 305 26,930 4.5% 1,208 3.6%P 978P 365 31,453 4.5% 1,417 3.6%P 1,152P	03/02/2018 B&O	S-Jo-Lane Dario Hilton-ET D-Kulp-Terra Cartel Cathy-ET	David & Anne Kulp and Dan & Laura Chard Manheim PA
1704	RADical Tequila Trump	03/02/2018 B&O	S-Cozy Nook Carter Tequila-ET D-RADical Trump Train	Lindsey Rucks Okeechobee FL

*1705 Top diMark Dynamite Adele	03/02/2018	B&O	S-La Rainbow Bfly Dynamite-ETV D-Top diMark Flash Amelia	Elise Regusci Modesto CA
*1706 Topp-View Jongleur Go Crazy D-03-00 128 8,046 2.8% 230 3.1%P 250P 365 13,261 4.4% 587 3.5%P 463P	03/02/2018	B&O	S-Jolahofs Polo Jongleur D-Johann Gettysburg	Madelyn Topp Wapakoneta OH
1707 V-Lane Tarzan Annabeth	03/02/2018		S-Wil-Rene Jackson Tarzan D-Dee-Va Tanbark Alma	V-Lane Farms Cushing OK
1708 Allandra Rich Marcy	03/01/2018	B&O	S-Jo-Dee Nemo Richard-ET D-Cutting Edge CP Margo-ET	Allan Brisson Vergennes VT
1709 Cutting Edge W Nelly-ET D-05-02 305 32,120 4.1% 1,332 3.2%P 1,039P 365 37,750 4.1% 1,539 3.3%P 1,243P	03/01/2018	B&O	S-Top Acres Wizdom D-Jo-Dee Wonderment Nuclear-ET	Ken Main and Peter Vail Copake NY
1710 Double W Daredevil Nightrap	03/01/2018		S-Hilltop Acres B Daredevil D-Powerline Emergency Nellie	Double W Dairy and Udder Confusion Dairy Farm Durand IL
1711 Fairdale Bosephus Nickel D-02-01 305 19,930 4.1% 822 3.6%P 721P 365 24,090 4.2% 1,003 3.7%P 888P	03/01/2018	B&O	S-Jobo Wonder Bosephus-ET D-Niermans RH Pepper Nippy	Fairdale Farm LLC Owenton KY
1712 Just So C Twinkie D-04-06 305 34,280 4.0% 1,375 3.2%P 1,081P 365 40,896 4.0% 1,620 3.2%P 1,289P	03/01/2018	B&O	S-Shiloh Brookings Cadence-ET D-Just So Twizzler	Just So Farm Lake Mills WI
1713 Knapps Tequila Arrow	03/01/2018		S-Cozy Nook Carter Tequila-ET D-Udderly Seaman 167	Tammy Voegeli and Louis & Garen Oliveira Arlington WI
1714 Merringdale Thunder Adeline	03/01/2018	B&O	S-Cutting Edge Thunder D-Merringdale Tally Addie	Emma Brennan Big Bend WI
*1715 Wapsi-Ana Seaman Dineout	03/01/2018		S-Cutting Edge Seaman D-Spring Acres Vigor Dino	Abby & Kaylee Fairbanks Anamosa IA

Class 306 Winter Heifer Calf

Born 12/01/2017 - 02/28/2018

Premiums: \$110, 90, 80, 65, 55, 50, 45, 45, 40, 40, 35, 35, 30, 30, 15, 10, 10

1st Place Award presented by Almost Mine Farms, LLC, Tom, Roberta & Jason Hoesly, Brodhead, WI

Bred & Owned Award presented by Elite Dairy, Peter Vail and Ken Main, Copake, NY

Junior Premiums: \$30, 20, 15, 10, 5

Junior Award presented by Maryland Junior Brown Swiss Association

1716 M & M Total Snickers	01/14/2018	B&O	S-Sunnyisle Total-ET D-M & M Nemo Shes Mine	M & M Swiss-M, M, J & L Stuessel Alma Center WI
1717 Topp-View Braiden Dramatic D-04-09 241 18,681 3.0% 562 3.2%P 605P	01/11/2018	B&O	S-Blessing Tex Braiden-ET D-Unrast Durango 417	Madelyn Topp Wapakoneta OH
1718 Five Star Snapple D-02-11 197 14,980 4.2% 677 3.4%P 519P	01/09/2018	B&O	S-Wil-Rene Jackson Tarzan D-Five Star Sami	Five Star Dairy Elk mound WI
1719 Blessing Biver Milly D-03-08 305 25,810 4.7% 1,260 3.6%P 930P 365 29,480 4.7% 1,400 3.6%P 1,074P	01/08/2018	B&O	S-Scherma Blooming Biver D-Blessing Galaxy Mist	Blessing Farms Fort Wayne IN
*1720 SCF Carter Caddilac	01/06/2018		S-Voelkers TD Carter D-Kruses M Rosco Mercedes-ET	Mackenzie Denman Bridgeport TX

1721	Schweizer Assay Pouffa	01/03/2018	B&O	S-Assay D-Schweizer Lee Pency	Ferne Hans Acton Vale QC
*1722	Brook Hollow Totally Tempted	12/30/2017		S-Sunnyisle Total-ET D-Brook Hollow Star Tahiti-ET	Carissa Pittman West Salerm OH
*1723	LJF Carter Noels Hangover	12/26/2017	B&O	S-Voelkers TD Carter D-DMF Parker Laney	Jacob B. Johns Chapel Hill TN
1724	Kulp-Terra Seaman Carla-ETV D-02-06 305 23,300 4.4% 1,023 3.5%P 812P 365 28,538 4.4% 1,268 3.6%P 1,023P	12/22/2017	B&O	S-Cutting Edge Seaman D-Voelkers Brook Cara	David & Anne Kulp and Dan & Laura Chard Manheim PA
1725	Empire Legacy Petal-ET D-06-04 305 23,040 3.9% 907 3.0%P 686P 365 25,400 4.0% 1,018 3.1%P 777P	12/21/2017		S-Blessing Mort Laura Legacy D-Towpath Shock Patti	L: Kirbie Nichols, O: R Gould and K Kelly Hadley MA
*1726	Silver Top Cadence Twinter	12/21/2017	B&O	S-Shiloh Brookings Cadence-ET D-Silver Top Total Tweet-ET	L: Adele Biasini, O: Silver Top Swiss Morrisville VT
*1727	Fudges Angelina Kaylan	12/20/2017		S-Blessing Mort Wd Dusty D-Fudge Hannah Angelina	Kendall Willingham Gamaliel KY
*1728	IE KE Saddle Wizdom Soapy	12/20/2017		S-Top Acres Wizdom D-IDR KE Shasta TiUp Sadie	Kiele Eberling Postville IA
1729	R-Plaine All Lady Luck-ET	12/20/2017	B&O	S-Twinkle-Hill Cadnc All-Star D-R-Plaine Wonder Liberty	Jon & Alexis Retzlaff Belle Plaine WI
*1730	Rough Road Dur Pancake	12/20/2017		S-Hilltop Acres W Durham-ET D-Niermans C Pepper Precious	Mckenzie Pedigo Smiths Grove KY
1731	Blessing Garbro F Pausha-ET	12/19/2017		S-Brown Heaven Winningformula-ET D-Sun-Made GB Plt Pretzel-ET	Jeffrey McKissick New Castle PA
*1732	Horseshoe Hill Goliath Lucy D-03-06 305 20,162 4.9% 957 3.7%P 720P	12/17/2017	B&O	S-Old Mill Tray Goliath-ET D-Horseshoe Hill Licketysplit	L: Cal Anderson; O: Nick & Joyce Uglow Fort Atkinson WI
1733	R N R FNF Jewett ET D-04-06 305 25,280 5.3% 1,351 3.5%P 877P 365 30,140 5.4% 1,622 3.5%P 1,063P	12/17/2017	B&O	S-Brown Heaven R Fast&Furious-ET D-R N R Emergency Jera-ET	Ronald M. & E. Renee Michalovich Lakeville OH
1734	Brown Heaven Fara Seaman ET	12/16/2017		S-Cutting Edge Seaman D-Swiss Dream Agenda Faith	Ferne Vannod St-Louis De Gonzague QC
*1735	Blessing Garbro P Robbie-ET	12/14/2017		S-Voelkers Wndt Chilli Pepper D-Garbro JP Ravioli-ET	Matthew Pacheco Kerman CA
1736	B-M Goliath Getty	12/12/2017	B&O	S-Old Mill Tray Goliath-ET D-Rad-ical B Gorgeous-ETV	Dale & Deanna Bendig and Tony Moreno Gettysburg PA
*1737	Prime Time Tequila Ginger-ET	12/12/2017		S-Cozy Nook Carter Tequila-ET D-Top Acres HP Peppy Glow-ET	Alexis Geiwitz New Castle PA
*1738	Blessing Garbro F Porsha-ET	12/10/2017		S-Brown Haven Winning Formula-ET D-Sun-Made GB P LT Pretzel-ET	Amy Hughes and Ayden Watts Killbuck OH
1739	Kulp-Gen Carrier Fauna-Twin	12/10/2017		S-Kulp-Terra Cartl Carrier-ET D-Kulp-Gen Drakar Farah	Blue Royal Dairy LLC Reedsville WI

1740	Kruses LJ Baxter Isabella D-03-08	305 17,700 3.4% 609	3.3%P 587P	12/08/2017 B&O	S-Sun-Made KB Baxter-ET D-Kruses LJ Stuart Ingrid	Loras Kruse Holy Cross IA
*1741	Miami Hills Richard Janessa D-04-03	305 34,029 4.4% 1,484 365 38,074 4.4% 1,688	3.4%P 1,169P 3.4%P 1,336P	12/08/2017 B&O	S-Jo-Dee Nemo Richard-ET D-Nor-Bert MC Mint Julip-ET	Kevin Frye Logansport IN
*1742	Nor-Bert Cadence Rumor Has It D-02-02	259 24,431 6.8% 1,661	3.6%P 882P	12/07/2017 B&O	S-Shiloh Brookings Cadence-ET D-Blessing Norbert Garbro Ran	Dalton, Dillon & Breanne Freeman Bremen IN
1743	New View C Bravo			12/05/2017	S-Voelkers TD Carter D-Cutting Edge Titanium Branch	John & Bonnie Ayars and Dr. Kenny Manion Mechanicsburg OH
1744	Schaerli Bebette Carrier			12/05/2017	S-Kulp-Terra Cartl Carrier-ET D-Schaerli Bobitte Power Surge	Ferme Beauvoir, S Boulanger and C Dulac Lambton QC
1745	Twinkle-Hill R Starbuc 1289			12/05/2017 B&O	S-Kaligen Nesta Nescardo D-Twinkle-Hill King Starbucks	Jeannie & Laurie Winkelman Watertown WI
1746	A Joy Kings Shazam D-03-04	264 14,889 4.4% 662	3.4%P 502P	12/04/2017 B&O	S-Cutting Edge Kingsman D-Kuhlkows Lebron Shakira	Michala Kuhlman Athens PA
1747	Brown's Ganas Genoa			12/04/2017	S-Top Acres Wizdom D-Brown's Goochies Gania	Becky Allen Terreton ID
*1748	Autumn Creek Wizdom Kandi-ET 02-06	25 1,800 3.8% 80	3.2%P 70P	12/03/2017 B&O	S-Top Acres Wizdom D-Cutting Edge C Kitty-ET	Olivia & Nicholas Love Scottdale PA
*1749	Blessing Garbo OS Tara-ETV 05-01	305 31,510 4.2% 1,324 365 36,430 4.4% 1,592	3.2%P 1,006P 3.3%P 1,194P	12/03/2017	S-Scherma Blooming Biver D-Cutting Edge S Treasure-ET	Caylee Nicole James Wolcottville IN
1750	Bradner-4G Carter Triumph			12/03/2017 B&O	S-Voelkers TD Carter D-Bradner PS Tristan-ET	Golden Gate Farms Abbotsford BC
1751	Brook Hollow Winmore Melee			12/03/2017	S-Top Acres Winmore-ET D-Brook Hollow Malaki-ET	Tammy Voegeli and Louis & Garen Oliveira Arlington WI
*1752	Browns Galenas Gracie Lou D-03-01	305 21,490 3.9% 845 359 24,240 3.9% 957	3.6%P 763P 3.6%P 861P	12/03/2017	S-Bleassing WD Prize D-Browns Goochies Galena	Otis, Malcolm & Quincee Johnson Evansville WI
1753	Cliff-Brook Cadence Carry			12/03/2017 B&O	S-Shiloh Brookings Cadence-ET D-Odyssey Sky Pilot Charm	Cliff Brook Farm and Zachary Thompson South Wayne WI
1754	New View C Jam			12/03/2017 B&O	S-Voelkers TD Carter D-KY Blue Jello	New View Swiss Mechanicsburg OH
1755	Echo Hill F Wizdom Hadley D-05-00	289 30,618 4.2% 1,300	3.1%P 956P	12/02/2017	S-Top Acres Wizdom D-Echo Hill Surge Hilda	Fairdale Farm LLC and Willy Campbell Owenton KY
1756	Hills Valley Cadenc Wicked-ET			12/02/2017	S-Shiloh Brookings Cadence-ET D-Hills Valley R Whopper-ET	Voegeli Farm, Inc. Monticello WI
1757	Kruses LJ Kendal Darlene D-01-11	296 15,220 4.2% 639	3.3%P 505P	12/02/2017 B&O	S-Kruses LJ Patrick Kendal-ET D-Kruses LJ Stuart Dorothy	Loras Kruse Holy Cross IA
*1758	Hill-Over Thunder Sizzle			12/01/2017	S-Citting Edge Thunder D-Hill-Over Wonder Shivver	Dylan Skiff Greenwich NY

*1759 Little A Cadence Billionaire	12/01/2017	B&O	S-Shiloh Brookings Cadence-ET D-Alpine Echo Goldenboy Babe	Aaliyah Gunn Orfordville WI
1760 Siegerts Damian Pinapple	12/01/2017		S-Hilltop Acres Bk Damian-ET D-Precious B Priceless	Leslie & Linda Bruchey Westminster MD
1761 Top Acres HP B Whizkid-ET	12/01/2017	B&O	S-Blessing Tex Braiden-ET D-Top Acres Supreme Wizard-ET	Wayne E. Sliker St. Paris OH
1762 Udderconfusion TB Margarita	12/01/2017	B&O	S-Pit-Crew Wonder Tankbark-ET D-Udderconfusion Motown Maple	Udder Confusion Dairy Farm Durand IL
*1763 Wapsi-Ana Thunder Julie	12/01/2017		S-Harts Thunder D-Wapsi-Ana Torch Miller	Abby & Kaylee Fairbanks Anamosa IA
Class 307 Fall Heifer Calf				
Born 09/01/2017 - 11/30/2017				
Premiums: \$110, 90, 80, 65, 55, 50, 45, 45, 40, 40, 35, 35, 30, 30, 15, 10, 10				
1st Place Award presented by Brown's Brown Swiss, Dave & Donna Brown Family, Monroe, WI				
Bred & Owned Award presented by Autumn Creek Farm, the Love Family, Scottdale, PA				
Junior Premiums: \$30, 20, 15, 10, 5				
Junior Award presented by Stylin Genetics, Leslie and Linda Bruchey, Westminster, MD				
*1764 Horseshoe Hill Twister-ET	11/04/2017		S-Brown Heaven Winningformula-ET D-Random Luck Koors On Taps	L: Cal Anderson; O: Joyce Uglow Fort Atkinson WI
	D-04-10	305 18,913 4.9% 930	3.9%P 732P	
1765 Schweizer Dynamite Chanel	10/26/2017	B&O	S-La Rainbow Bfly Dynamite-ETV D-Schweizer Alloy Puce	Ferne Hans Acton Vale QC
1766 Holyland Top Down 3269	10/18/2017	B&O	S-Jo-Lane Dario Hampton-ET D-Holyland Top The Chart 2459-ET	Joe & Mark Loehr Mt Calvary WI
	D-02-00	305 20,180 4.6% 934	3.7%P 753P	
		365 24,830 4.7% 1,177	3.7%P 921P	
*1767 Devores Delite Rocky	10/12/2017		S-Hilltop Acres PP Delite D-Devores Martini Raquel	Coltin, Morgan, Claytin & Mady Wingert Harmony MN
1768 Kalos Beu Dell J Autumn	10/11/2017		S-Beu Dell Rich Javier D-Kalos Beu Dell Sea Armada	Morgan Cavitt Madison WI
*1769 Hilltop Acres CT Glaze	10/08/2017		S-Voelkers TD Carter D-Telleen-KB Vigor Gloria	Kaleb, Cole & Carter Kruse Dyersville IA
*1770 M & M Thunder Struck	10/04/2017	B&O	S-Cutting Edge Thunder D-M & M Total Shotski	L: Jaxon Boe O: M, M, J & L Stuessel Alma Center WI
*1771 Red Brae La Allstar Starie	10/04/2017		S-Twinkle-Hill Cadnc All-Star D-Red Brae La T Sparkie Twin	Elise & Brady Bleck Glenbeulah WI
	D-02-06	305 13,541 4.4% 590	3.4%P 463P	
		310 13,737 4.4% 600	3.4%P 469P	
1772 Voelkers Thunder Cinema-ETV	09/29/2017	B&O	S-Cutting Edge Thunder D-Voelkers Migel Candid	Charles Voelker Perryville MO
	D-11-09	305 13,970 3.9% 546	3.2%P 446P	
		365 16,529 4.0% 657	3.2%P 532P	
1773 Shanks Flash B 232	09/28/2017	B&O	S-Lentreeroche Biver Flash D-Shanks Pepper Bouquet 101	Walter Shanks Harvard IL
*1774 Twinkle-Hill L Annie 1267	09/26/2017		S-Bmg Biver Liberate D-Twinkle-Hill Cart Anne Twin	Aaliyah Gunn Orfordville WI

*1775 Buttercrest Stryker Colorado	09/21/2017	S-Maverick Mr Nemo Stryker D-Buttercrest Rich Canada	Suton Paulson Arlington WI
*1776 Open-Road Bosephus Windian-ET D-02-05 125 7,375 3.3% 235 3.1%P 217P	09/20/2017 B&O	S-Jobo Wonder Bosephus-ET D-Top Acres Braiden Winxit-ET	William Hughes Killbuck OH
*1777 Random Luck Whiskey Tea D-02-11 305 22,340 5.1% 1,132 3.5%P 778P 334 23,990 5.1% 1,230 3.5%P 845P	09/20/2017 B&O	S-Manis Glenn Whiskey-ET D-Random Luck B Tea Rose	Allison Thompson Darlington WI
1778 Top Acres Durham Wintu-ET	09/20/2017	S-Hilltop Acres W Durham-ET D-Top Acres Supreme Wizard-ET	Dennis & Tanner Mashek Calmar IA
1779 Vogrin Cali Wizdom Wine	09/20/2017 B&O	S-Top Acres Wizdom D-Vogrin Renegade Why Not Me	Tammy Voegeli and Louie Oliviera Arlington WI
1780 Pit-Crew Braiden Taran	09/17/2017 B&O	S-Blessing Tex Braiden-ET D-Pit-Crew Brook Tara-ET	L: Allison Foss O: Pit-Crew Genetics Cambridge MN
*1781 Cutting Edge T Frascati-ETV	09/13/2017 B&O	S-Cutting Edge Thunder D-Round Hill Legacy Flyhi	L: Jacob Harbaugh O: Ken Main & Peter Vail Marion WI
*1782 GMC Tray Ruth	09/13/2017	S-Shen-Val Omf Leg Tray-ET D-Cutting Edge PS Reba	Megan Hill Bristol VT
1783 North Lanes Thunder Caramel D-02-00 305 17,559 4.0% 697 3.9%P 614P	09/13/2017 B&O	S-Cutting Edge Thunder D-North Lanes VCE Comfy	Chelsea Skidmore Union City OH
1784 Top Acres Braiden Winz-ET	09/12/2017	S-Blessing Tex Braiden-ET D-Top Acres Supreme Winzer-ET	Kelly Jo Manion Mechanicsburg OH
1785 Brook Hollow Totally Had It-ET	09/11/2017	S-Sunnyisle Total-ET D-Brook Hollow JP Honolulu	Leslie & Linda Bruchey Westminster MD
1786 Blessing Mort Garbro O Grace-ETV D-05-09 305 29,000 4.9% 1,424 3.2%P 924P 365 33,740 4.9% 1,638 3.3%P 1,100P	09/10/2017	S-Blessing Tex Braiden-ET D-Top Acres Pilot Groovey-ET	Blessing Farms, Garrison Bros., B Osborn and R Mort Fort Wayne IN
1787 Brook Hollow Total Payback	09/10/2017 B&O	S-Sunnyisle Total-ET D-Brook Hollow Miss Pout	Delbert & Heather Yoder West Salem OH
1788 Pit-Crew Richard Pip-Twin D-05-05 305 29,570 3.9% 1,162 3.3%P 966P 365 34,174 4.0% 1,362 3.3%P 1,131P	09/10/2017 B&O	S-Jo-Dee Nemo Richard-ET D-Pit-Crew Wonder Piper-ET	Pit-Crew Genetics Cambridge MN
1789 Rad-Ical Fly To Amarillo-ETV D-03-04 305 28,890 3.5% 1,018 3.4%P 974P	09/10/2017	S-Top Acres Wizdom D-Cutting Edge W Amber-ET	E Kueffner, T Packard and M & L Hellenbrand Boonsboro MD
*1790 Topp-View Braiden Venna D-02-03 183 9,315 3.0% 279 3.3%P 333P	09/10/2017 B&O	S-Blessing Tex Braiden-ET D-Topp-View Phoenix J Lo	Keaton, Kinley & Madelyn Topp Botkins OH
*1791 Hackmatack Devil Herself-ET	09/09/2017	S-Hilltop Acres B Daredevil D-Victory Acres Car Cally-ET	Brooke J Soffer Portageville NY
*1792 JC Daredevil Ryder	09/08/2017	S-Hilltop Acres B Daredevil D-CIE Sunrise Hill Seaman Royale	Ashlee Garbers and Spencer Clark La Crosse WI
1793 Cutting Edge D Trava-ETV	09/07/2017 B&O	S-Hilltop Acres G Durango-ET D-Dublin-Hills Treats	Ken Main and Peter Vail Copake NY

1794 Bradner-4G Thunder Bolt-ET		09/06/2017	B&O	S-Cutting Edge Thunder D-Bradner Pasture Bedtime-ET	Golden Gate Farms Abbotsford BC				
1795 Bradner-4G Thunder Power-ET		09/06/2017	B&O	S-Cutting Edge Thunder D-Bradner Pasture Bedtime-ET	Golden Gate Farms Abbotsford BC				
*1796 DeVores Delite Sweet Pickle		09/06/2017	B&O	S-Hilltop Acres PP Delite D-DeVores Goldrush Piper	L: Allyson Heinrich, O: Kayla Whipple Wilton IA				
1797 Del-Rose Thunder Simone		09/05/2017	B&O	S-Cutting Edge Thunder D-Del-Rose Bonanza Somoa	Ladd E. Hanselman Bloomville NY				
1798 Cutting Edge D Nadine-ETV		09/04/2017		S-Hilltop Acres G Durango-ET D-Jo-Dee Wonderment Nuclear	P, K & R Linke and G & L Adams Brookings SD				
1799 Fick Prism Pretty		09/04/2017	B&O	S-Brown Heaven Winningformula-ET D-Fick Princess Prism	Galen Fick Boyden IA				
	D-06-03	305	21,870	4.1%	907	3.3%P	723P		
		345	23,016	4.1%	950	3.3%P	761P		
1800 IE Roeen Lebron Andie		09/04/2017		S-Rose Lane M Lebron Elroy-ET D-ID Roeen Ann	L: Jaynie Rule O: Robert & Doreen Wesp Dodgeville WI				
*1801 Autumn Creek Carter Snugget		09/03/2017	B&O	S-Voelkers TD Carter D-Autumn Creek Gold Snuggle	Nicholas Love Scottdale PA				
	D-04-11	298	17,854	5.1%	908	4.1%P	724P		
1802 Cutting Edge GL Oleana-ETV		09/03/2017		S-BMG Lust Get Lucky-ET D-Twinkle-Hill Cadence Oakley	Kelly Jo Manion Mechanicsburg OH				
1803 Cutting Edge GL Opal-ETV		09/03/2017		S-BMG Lust Get Lucky D-Twinkle-Hill Cadence Oakley	Laurie A. Winkelman Watertown WI				
*1804 Spring Vale Daisy		09/03/2017	B&O	S-Cutting Edge Seaman D-Spring Vale Dawn	Jonathan Hubbard Thurmont MD				
*1805 Stanley Kingsman Piper		09/03/2017	B&O	S-Cutting Edge W Kingsman D-Sun-Made HP Supreme Ping	Chandra Stanley Enosburg VT				
1806 All-Glo Carter Popsicle		09/02/2017	B&O	S-Voelkers TD Carter D-Just-In Braiden Paradise	Justin & Ashley Kaufman Berlin PA				
	D-02-05	275	11,105	3.9%	441	3.2%P	365P		
1807 Arthurst Double W C Sean-ET		09/02/2017	B&O	S-Vetschs Nesta Calvin-ET D-Old Mill SDF Glenn Shakti-ET	Arthurst Farm & Double W Dairy Plato MN				
	D-04-10	305	22,650	4.5%	1,030	3.6%P	817P		
		365	24,668	4.7%	1,148	3.7%P	906P		
1808 Fairdale Renegade B Cali-ET		09/02/2017		S-Jobo Wonder Bosephus-ET D-Renegade-Fairdale PS Carma-ET	Fairdale Farm LLC Owenton KY				
	D-02-02	305	18,799	3.8%	710	3.2%P	610P		
*1809 Hendzelwood Thunder Weslyn		09/02/2017	B&O	S-Cutting Edge Thunder D-Hendzelwood Jet Wyn	Lila Kilsdonk Seymour WI				
*1810 KS Shila Bobby Suzie		09/02/2017		S-KE Babs Jaguar Bobby D-KS Susan Brookings Shila-ET	Kiele Eberling Postville IA				
1811 Nolandale Haywire Jalyn		09/02/2017	B&O	S-Northill Trace Haywaire D-Nolandale PS Jala	Nolandale Farm Lexington IL				
1812 Thorndale Blueeye Shadow		09/02/2017	B&O	S-Blessing Tex Braiden-ET D-Thorndale W Pilot Blueeyes	Scott C. Partridge Batavia NY				

1813 As Is Kings Soco	09/01/2017	B&O	S-Cutting Edge Kingsman D-Ole Acres Osborn South T-ET	Abbie & Donald Kuhlman and Scott Partridge Batavia NY
1814 Hilltop Acres Scubd Nevada-ET D-01-09 305 23,470 4.2% 975 3.7%P 864P	09/01/2017	B&O	S-BMG Biver Liberate D-Hilltop Acres Scubd Nutella-ET	Dennis Mashek Calmar IA
1815 RADical Fly To Aruba-ETV	09/01/2017	B&O	S-Top Acres Wizdom D-Cutting Edge W Amber-ET	Lindsey Rucks Okeechobee FL
1816 Sunrise Hill Daredevil Phoebe	09/01/2017	B&O	S-Hilltop Acres B Daredevil D-Sunrise Hill Cadence Petra	Nate Lemire Blue Mounds WI
1817 VB HP Moonlight Bay	09/01/2017	B&O	S-La Rainbow B Moonlight D-VB HP C Pepper Bacardi	Voegeli Farm, Inc. and Hillpoint Partners Monticello WI
1818 VB HP Whiskey Martha D-04-00 305 31,170 4.6% 1,429 3.1%P 980P 365 35,290 4.5% 1,601 3.2%P 1,123P	09/01/2017	B&O	S-Manis Glenn Whiskey-ET D-VB Tot Milkshake-ET	Voegeli Farm and Hillpoint Partners Monticello WI
1819 Won-Bell Protege Shayla	09/01/2017	B&O	S-Pit Crew Pepper Protege D-Cutting Edge J Shay	Daniel Wonders Mineral Point WI

Class 308 Summer Yearling Heifer

Born 06/01/2017 - 08/31/2017

Premiums: \$110, 90, 80, 65, 55, 50, 45, 45, 40, 40, 35, 35, 30, 30, 15, 10, 10

1st Place Award presented by Kalos Brown Swiss, Sara Harn, Brooklyn, WI

Bred & Owned Award presented by Elite Dairy, Peter Vail and Ken Main, Copake, NY

Junior Premiums: \$30, 20, 15, 10, 5

Junior Award presented by Maple Sugar Farm, the Young Family, Brandon, VT

1820 Grand Veue Allstar Zoe	08/28/2017	B&O	S-Twinkle-Hill Cadnc All-Star D-CIE Grand Veue Seaman Zsa Zsa	Lucas H. Baker Hoosick Falls NY
1821 Del-Rose Kingpin Yolo	08/01/2017	B&O	S-Jo-Dee Trooper Kingpin D-Classy Creek Joel Yahoo	Chelsea N. Hanselman Bloomville NY
*1822 Iroquois Acres Total Candy	07/17/2017		S-Sunnyisle Total-ET D-Iroquois Acres Jong Cali	Matthew Pacheco Canton De Hatley QC
1823 R-Plaine Shes All Lady-ET	07/16/2017	B&O	S-Twinkle-Hill Cadnc All-Star D-R-Plaine Wonder Liberty	Jon & Alexis Retzlaff Belle Plaine WI
1824 Horseshoe Hill Cart Frills D-04-05 305 23,100 4.2% 963 3.3%P 763P	07/10/2017		S-Voelkers TD Carter D-Horseshoe Hill Leg Falcon	Gregg Christianson & William Medo Bonduel WI
1825 Brown Heaven Carter Beaver	07/08/2017		S-Voelkers TD Carter D-Brown Heaven B Little Biver	Ferme Hans Acton Vale QC
1826 Hills Valley Carter Fashion-ET	07/07/2017	B&O	S-Voelkers TD Carter D-Hills Valley Total Fierce	Hill's Valley Farm, LLC Cattaraugus NY
*1827 Sar-Boh Wizdom Sassafrass	07/05/2017	B&O	S-Top Acres Wizdom D-Cutting Edge T Summer-ETV	Sarah Hagenow Poynette WI
*1828 Edsall Hill Allstar Confetti	07/02/2017		S-Twinkle-Hill Cadnc All-Star D-Edsall Hill Cotton Candy	Sean Shults Sharon Springs NY
1829 Sunrise Hill Daredevil Fatima	06/30/2017	B&O	S-Hilltop Acres B Daredevil D-Sunrise Hill Vigor Fortitude	Nate Lemire Blue Mounds WI

1830 Pit-Crew Formula Koda	06/25/2017	B&O	S-Brown Heaven Winningformula-ET D-Pit-Crew Total Kiara	L: Allison Foss O: Pit-Crew Genetics Cambridge MN
1831 Alpine Echo B Natalia	06/21/2017		S-Jobo Wonder Bosephus-ET D-Alpine Echo Totally Naked	Amy Schultz Dakota IL
*1832 Cutting Edge Sandman Fantasia	06/18/2017		S-Cutting Edge Sandman D-Cutting Edge B Fawn-ET	Trenton Hammerand Epworth IA
*1833 Cutting Edge S Egberta	06/17/2017		S-Cutting Edge Sandman D-Cutting Edge G Gaiety-ETV	Cole Mahlkuch Juda WI
*1834 Cutting Edge S Dagmar	06/16/2017		S-Cutting Edge Sandman D-Cutting Edge K Derby Twin	Dakota J Fraley Muncy PA
1835 Blessing Formula Vicky D-02-00 305 21,054 4.2% 892 3.4%P 713P 365 25,136 4.3% 1,079 3.4%P 856P	06/15/2017	B&O	S-Brown Haven Winning Formula-ET D-Blessing Mort Osborn Vica-ETV	Blessing Farms Fort Wayne IN
*1836 A Logansway Winning Gloplug	06/14/2017	B&O	S-Brown Heaven Winningformula-ET D-A Logansway Tanbark Gracie	Zachary Logan Farmdale OH
1837 Cutting Edge S Nikita D-02-06 252 17,823 4.8% 864 3.6%P 646P	06/14/2017		S-Cutting Edge Sandman D-Sun-Made Caup Nina-ET	Kelly Jo Manion Mechanicsburg OH
1838 Cutting Edge C Skylar	06/12/2017	B&O	S-Voelkers TD Carter D-Fulp Agenda Snickers-ET	Ken Main and Peter Vail Copake NY
1839 Ros-Sue-Kle Vegas D-01-11 305 16,949 4.9% 825 3.4%P 568P	06/11/2017	B&O	S-R Hart Cayenne Pepper D-Ros-Sue-Kle Valorie	Ross & Sue Kleingartner Gackle ND
1840 GMC Kingpin Jailyln	06/10/2017	B&O	S-Jo-Dee Trooper Kingpin D-Bo Joy Tanbark Jaicee-ET	Brooke M Clark of GMC Farm Cornish Flat NH
*1841 Kruses GK Stuart Linsey	06/09/2017		S-Kruses LJ Wonderment Stuart D-Kruses GK Marty Lottey	D Anderson, K Rumbeck and G Cast Beaver Crossing NE
*1842 Hidden Hill TV R Party Girl	06/07/2017		S-Jo-Dee Nemo Richard-ET D-Blessing Mort Osborn Penny	Ally Jones and Madelyn Topp Glasgow KY
*1843 Jenlar Davnpt Turtle Sundae D-03-07 305 23,856 3.6% 865 3.2%P 767P 309 24,011 3.6% 872 3.2%P 772P	06/07/2017		S-Hilltop Acres CT Davenport-ET D-Jenlar C Pepper Tillie	Austin & Brianna Meyer Chilton WI
*1844 Onword V Vernita-TW	06/07/2017	B&O	S-Onword P Visionary D-Onword Logan Verna	L: Carter Kruse; O: Dennis Worden Oelwein IA
1845 Red Brae Faust Livia D-05-05 305 27,030 4.8% 1,305 3.3%P 891P 365 30,940 4.8% 1,478 3.3%P 1,035P	06/06/2017	B&O	S-Riedland Camelot Faust-ET D-Red Brae Solution Licons	Armbruster Bros. Farm, Inc. Muscodia WI
1846 Brook Hollow B Posh Party	06/05/2017	B&O	S-Blessing Tex Braiden-ET D-Brook Hollow Total Party	D & H Yoder and Interstate Heifer Care West Salem OH
*1847 CIE TSC Star Cadence Twister	06/02/2017	B&O	S-Shiloh Brookings Cadence-ET D-IE Chwala-T VG Thunder	Trysten Chwala Jefferson WI
*1848 Cutting Edge D Shiloh-ETV	06/02/2017		S-Hilltop Acres G Durango-ET D-Cutting Edge Wonderment Star	Micheal Barton Copake NY

1849 DSKM Carter Juniper	06/02/2017	S-Voelkers TD Carter D-DSKM JZ Jellyfish	Brothers Three Brown Swiss North Prairie WI
*1850 Brown Heaven Carter Tutti	06/01/2017	S-Voelkers TD Carter D-Brown Heaven Fabulous Timbits	Matthew Pacheco Canton De Hatley QC
*1851 DeVores Delite Pennilyn	06/01/2017 B&O	S-Hilltop Acres PP Delite D-DeVores Martini Picka	L: Allyson Heinrich, O: Kayla Whipple Wilton IA
1852 Open-Road Car Pink	06/01/2017 B&O	S-Kulp-Terra Prde Car-ET D-Open-Road Tanbark Pinkie	Steven D. Watts Killbuck OH
		D-04-03 305 22,492 3.6% 804 3.4%P 758P 365 25,960 3.6% 903 3.4%P 874P	
*1853 Red Brae EB Manchester Jessi	06/01/2017 B&O	S-Cozy Nook W Manchester D-Red Brae Daa Java Jessica	Elise Bleck Muscodia WI
		D-02-03 305 17,803 3.7% 655 3.4%P 613P 365 21,016 3.7% 795 3.4%P 732P	
1854 Top Acres A Winner-ET	06/01/2017 B&O	S-Oak View Zeus August D-Top Acres Supreme Wizard-ET	Wayne E. Sliker St. Paris OH
		D-07-05 305 29,962 4.9% 1,482 3.6%P 1,066P 365 35,404 4.9% 1,737 3.6%P 1,246P	
*1855 Topp-View Braiden Paige	06/01/2017 B&O	S-Blessing Tex Braiden-ET D-Topp-View August Paisley	Madelyn Topp Wapakoneta OH
		D-01-11 222 9,304 3.6% 330 3.4%P 319P	
Class 309 Spring Yearling Heifer			
Born 03/01/2017 - 05/31/2017			
Premiums: \$110, 90, 80, 65, 55, 50, 45, 45, 40, 40, 35, 35, 30, 30, 15, 10, 10			
1st Place Award presented by Horseshoe Hill, Norm & Joyce, Nick & Buffy Uglow, Watertown, WI			
Bred & Owned Award presented by Jenlar Brown Swiss, Larry & Jennifer Meyer and Family, Chilton, WI			
Junior Premiums: \$30, 20, 15, 10, 5			
Junior Award presented by Topp-View, Botkins, OH			
*1856 Seths Bosephus Fanatic	09/03/2017	S-Jobo Wonder Bosephus-ET D-Seths Total Frosty-ET	Paul Grulke Watertown WI
1857 Brook Hollow Wonder Macaroon	05/15/2017 B&O	S-Top Acres C Wonderment-ET D-Brook Hollow Jongleur Manini	Delbert & Heather Yoder West Salem OH
1858 Horseshoe Hill Nu Farruggio	05/05/2017 B&O	S-Voelkers TD Carter D-Horseshoe Hill Nu Fathom	Nick Uglow Watertown WI
		D-02-00 305 16,196 3.6% 585 3.3%P 535P	
1859 Red Brae WF Teresina J	04/29/2017 B&O	S-Brown Heaven Winningformula-ET D-Red Brae Bosephus Teresa J	Jill Armbruster Muscodia WI
		D-03-07 305 22,134 4.8% 1,051 3.3%P 726P 365 25,138 4.8% 1,211 3.3%P 842P	
1860 CIE Chwala-T Cadence Tulip	04/26/2017	S-Shiloh Brookings Cadence-ET D-IE Chwala-T PS Twinkie-TW	Gerald, Emily & Kizzy Chwala Jefferson WI
1861 Pit-Crew Richard Talina	04/18/2017 B&O	S-Jo-Dee Nemo Richard-ET D-Pit-Crew Total Talia	Pit-Crew Genetics Cambridge MN
*1862 Kruses Carter Karmel	04/13/2017	S-Voelkers TD Carter D-Kruses Joey Kitten-ET	Cooper Denman Bridgeport TX
1863 Brown Heaven C Burberry	04/09/2017 B&O	S-Voelkers TD Carter D-Brown Heaven Bloom Bluberry-ET	Brown Heaven Verchères QC
1864 Udderconfusion Lulybye Twin	04/03/2017 B&O	S-Brown Haven Winning Formula-ET D-Wundrow Liberty Bell	Udder Confusion Dairy Farm Durand IL

*1865	Cherry Crest S Jaylee		03/31/2017		S-Cutting Edge Seaman D-Turnpike View Tan Janelle	Eden Groff Ronks PA
1866	Top diMark Cali100 B Wizzy		03/20/2017	B&O	S-Jobo Wonder Bosephus-ET D-Top Acres HP B Wizer-ETV	Carol Regusci and Louie Oliveria Modesto CA
1867	Arethusa Northern Lights		03/19/2017	B&O	S-Jo-Dee Trooper Kingpin D-Arethusa Supreme Northstar	Arethusa Farm LLC Litchfield CT
1868	Pit-Crew Rich Prankster-ET		03/18/2017	B&O	S-Jo-Dee Nemo Richard-ET D-Pit-Crew Wonder Pizzaz-ET	Pit-Crew Genetics Cambridge MN
1869	Alba Gen Alloy Steel		03/14/2017	B&O	S-Cozy Nook Beamer Torch D-Shiloh Lane Alloy Scarlet	Mark Hornbostel West Salem IL
1870	Cutting Edge V Novella-ETV		03/12/2017	B&O	S-SCF Jet Victor-Twin D-Jo-Dee Wonderment Nuclear-ET	Ken Main and Peter Vail Copake NY
*1871	Jenlar Daredevil Trickster		03/12/2017	B&O	S-Hilltop Acres B Daredevil D-Jenlar Carter Trix-TW	Brianna Meyer Chilton WI
	D-02-00	305	22,122	5.0%	1,100	3.1%P 683P
		365	27,308	5.1%	1,387	3.2%P 864P
*1872	Silver Top Allstar Trick		03/11/2017	B&O	S-Twinkle-Hill Cadnc All-Star D-Silver Top Durham Treat	L: Shelby Biasini, O: Silver Top Swiss Morrisville VT
1873	Top Acres J Whirl-ET		03/10/2017		S-Jolahofs Polo Jongleur D-Top Acres Supreme Wizard-ET	Izzy Bohrer Walkersville MD
	D-02-03	305	21,236	5.2%	1,151	3.3%P 717P
1874	Cliff-Brook Seaman Betty		03/08/2017	B&O	S-Cutting Edge Seaman D-Clif-Brook Faust Bess-ET	Cliff Brook Farm and Zachary Thompson South Wayne WI
1875	A Joy Durham Colada-ET		03/07/2017	B&O	S-Hilltop Acres W Durham-ET D-AJK CL EM Corona	Abbie (Kuhlman) Evans Athens PA
	D-08-09	295	16,136	5.1%	826	3.9%P 627P
*1876	Horseshoe Hill Rootbeer		03/06/2017	B&O	S-Jo-Dee Trooper Kingpin D-Horseshoe Hill Razzledazzle	L: Otis Johnson; O: Nick Uglow Watertown WI
	D-02-01	305	20,072	3.8%	756	3.1%P 618P
1877	Blessing Mort Jazz Victoria		03/05/2017	B&O	S-Blessing Pepper Jazz-ET D-Blessing Mort Pepper Vanna	Blessing Farms and Rex Mort Fort Wayne IN
	D-02-05	305	22,938	4.0%	912	3.3%P 761P
		365	25,807	4.1%	1,055	3.4%P 868P
1878	Md-West-View Sicily-ET		03/05/2017		S-Top Acres Winmore-ET D-Md-West-View Sapphire-ET	Hayleigh Geurink, Kelvin Webster and Velmar Green Grand Rapids MI
1879	Cutting Edge V Tinker-ETV		03/04/2017	B&O	S-SCF Jet Victor-Twin D-Dublin-Hills Treats	Ken Main and Peter Vail Copake NY
1880	Kruses Frontier Satine ET		03/04/2017	B&O	S-Kruses Lazer Frontier D-Kruses Joey Sugar	Rick Kruse Earlville IA
	D-04-08	305	23,602	4.4%	1,032	3.3%P 780P
*1881	SCF Carter Clair		03/04/2017		S-Voelkers TD Carter D-SCF PK Victor Clair	Jaelyn Jobe Bridgeport TX
1882	Bradner-4G Norwin Portrait		03/03/2017	B&O	S-Norwin D-Bradner Jongleur Poem	Golden Gate Farms Abbotsford BC
1883	Cutting Edge C Truelove		03/03/2017	B&O	S-Voelkers TD Carter D-Cutting Edge T Trudy	Walter Vail, Kyle Barton and Elite Dairy Copake NY

1884 Hilltop Acres Ddevil Cassidy-ET D-02-11 305 20,541 5.1% 1,054 4.0%P 821P	03/03/2017 B&O	S-Hilltop Acres B Daredevil D-Hilltop Acres Brook Kari	Dennis Mashek Calmar IA
*1885 Pit-Crew Durham Tuscany	03/03/2017 B&O	S-Hilltop Acres W Durham-ET D-Pit-Crew Supreme Torino-ET	L: Abby Foss O: Pit-Crew Genetics Cambridge MN
1886 Kruses Carter Jillian-ET D-04-06 294 21,172 4.2% 886 3.6%P 756P	03/02/2017 B&O	S-Voelkers TD Carter D-Kruses Victor Jiterbug-ET	Rick Kruse Earlville IA
*1887 On-A-Whim Purple Fawn	03/02/2017	S-On-A-Whim Tb Purple Fever D-On-A-Whim Sandman Faith	Alyssa Grocott Edmeston NY
*1888 Silhouette Cadence Malibu	03/02/2017 B&O	S-Shiloh Brookings Cadence-ET D-Morrvue Durham Mittens	Brooke J Soffer Portageville NY
*1889 Buckeye Knoll Cad Sure Shot	03/01/2017 B&O	S-Shiloh Brookings Cadence-ET D-Buckeye Knoll Vigor Saige	Carrie Rhoades Greenville OH
1890 Hills Valley Lucky Raylinn	03/01/2017 B&O	S-BMG Lust Get Lucky D-Hills Valley Durham Rascal	Hill's Valley Farm, LLC Cattaraugus NY
1891 Jaden R Noty Hog	03/01/2017 B&O	S-Jo-Dee Nemo Richard-ET D-Jaden Not Too Shabby	Hayden Hauschildt Ellsworth WI
*1892 Lafoster Chili Pepperskyler	03/01/2017	S-Voelkers Wndt Chilli Pepper D-Dublin-Hills Sunita Twin	Ryan Lawton Newark Valley NY
1893 Robland Norwin Mayday D-02-07 305 23,966 3.8% 899 3.1%P 749P	03/01/2017 B&O	S-Norwin D-Robland Tanbark Molly	Elijah Landgraf Jackson MO
1894 Round Hill Supre Welcome-ET D-04-00 305 23,790 4.7% 1,109 3.6%P 864P	03/01/2017	S-Old Mill WDE Supreme-ET D-Top Acres Garbro Wanda-ET	Emily & Ron Heffner and Nathan Goldenberg Hagerstown MD
1895 Top Acres HP Winanna-ET	03/01/2017	S-Oak View Zeus August D-Top Acres Supreme Wizard-ET	Brilee Tucker, Hadleigh, Ezra & Kenna Tate Jones Edmonton KY

Class 310 Winter Yearling Heifer (not in milk)

Born 12/01/2016 - 02/28/2017

Premiums: \$110, 90, 80, 65, 55, 50, 45, 45, 40, 40, 35, 35, 30, 30, 15, 10, 10

1st Place Award presented by Autumn Creek Farm, the Love Family, Scottdale, PA

Bred & Owned Award presented by Wisconsin Brown Swiss Association, Inc.

Junior Premiums: \$30, 20, 15, 10, 5

Junior Award presented by Rose-Maar Dairy, Garnavillo, IA

*1896 Onword Dirk Volume D-04-02 305 29,410 4.1% 1,218 3.4%P 1,014P 365 35,000 4.2% 1,484 3.5%P 1,238P	02/04/2017 B&O	S-Switzer Tals Alimony Dirk-ET D-Onword Carter Vivace-ET	L: Brylie Volker, O: Dennis L. Worden Oelwein IA
1897 Hills Valley Durham Ryder	01/17/2017 B&O	S-Hilltop Acres W Durham-ET D-Hills Valley Bonanza Rose-ET	Hill's Valley Farm, LLC Cattaraugus NY
*1898 Pit-Crew Formula Rosebud ET	01/11/2017 B&O	S-Brown Heaven Winningformula-ET D-Cozy Valley Tumbleweed-ET	L: Abby Foss O: Pit-Crew Genetics Cambridge MN
1899 4th Generation Milkshake	01/08/2017	S-Reads Driver Kaleb-Twin D-4th Generation Star	Lloyd Hardy Black Earth WI
1900 Blessing Win V Osborn Nice-ETV	01/07/2017	S-Voelkers Wndt Chilli Pepper D-Blessing Agenda Nicki	Fred Mathys and Donna Harp Brandon MB

1901	M & M Nemo Sophia	01/02/2017	B&O	S-Jo-Dee Prelude Nemo-ET D-M & M Wonderment Shilo-ET	M & M Swiss - Matt, Megan, Jake & Levi Stuessel Alma Center WI
1902	IE Twinkle-Hill Oriana 1206	12/21/2016	B&O	S-Switzer Tals Alimony Dirk D-IDR Twinkle-Hill Pep Ornate	John & Dee Winkelman Watertown WI
*1903	Acacia August Cleo	12/10/2016		S-Oak View Zeus August D-Acacia Galaxy Cookie	Elizabeth Howman West Salem OH
*1904	Blessing Bosephus Franny 04-11 305 21,340 4.4% 946 3.1%P 653P 365 24,470 4.4% 1,083 3.2%P 774P	12/10/2016		S-Jobo Wonder Bosephus-ET D-Blessing Bonanza Frankie-TW	Caylee Nicole James Wolcottville IN
1905	Blessing Biver Kristian	12/08/2016		S-Scherma Blooming Biver D-Niermans Price Kylie	Alexis Sherry New Castle PA
*1906	Jenlar Chpew Whiskers-ETV D-03-04 305 29,158 4.3% 1,248 3.4%P 981P 365 37,320 4.3% 1,594 3.4%P 1,254P	12/06/2016		S-Voelkers Wndt Chilli Pepper D-Top Acres Garbro S Wish-ET	Austin & Brianna Meyer Chilton WI
1907	Top Acres C Wizzie Winit-ET D-07-05 305 29,960 4.9% 1,482 3.6%P 1,066P	12/05/2016		S-Voelkers TD Carter D-Top Acres Supreme Wizard-ET	John & Bonnie Ayars and Dr. Kenny Manion Mechanicsburg OH
1908	Jenlar Seaman Tinsel D-06-11 305 27,352 5.0% 1,360 3.3%P 906P 365 32,271 5.1% 1,644 3.3%P 1,080P	12/04/2016	B&O	S-Cutting Edge Seaman D-Jenlar Legacy Taffy	Larry & Jennifer Meyer Chilton WI
1909	Siegerts Power Merry	12/04/2016		S-Hilltop Acres Dm Power D-Siegerts Braiden Mystic	Hayleigh Geurink and Kelvin Webster Grand Rapids MI
1910	Dochaven Carson Ruby	12/03/2016	B&O	S-DJ Pilot Carson-ET D-Cutting Edge W Roxanne-ET	Jeffrey McKissick New Castle PA
1911	Kuhlows B Shebang D-03-04 264 14,889 4.4% 662 3.4%P 502P	12/03/2016	B&O	S-Blessing Tex Braiden-ET D-Kuhlows Lebron Shakira	Michala Kuhlman Athens PA
1912	RADical B Showbiz-ETV OCS D-06-11 305 30,125 4.1% 1,235 3.6%P 1,084P 365 35,800 4.1% 1,375 3.6%P 1,202P	12/03/2016	B&O	S-Scherma Blooming Biver D-Kulp-Terra TA Showgirl-ET	Lindsey Rucks Okeechobee FL
*1913	Red Brae Spa Cayenne Neola D-03-10 305 22,928 3.8% 875 3.2%P 733P 365 26,729 3.9% 1,044 3.3%P 872P	12/02/2016		S-R Hart Cayenne Pepper D-Red Brae Spa Cd Neona	Calli & Wyatt Storms Muscodia WI
1914	Top Acres C Wizzie Fly-ET D-07-05 305 29,962 4.9% 1,482 3.6%P 1,066P 365 35,404 4.9% 1,737 3.6%P 1,246P	12/02/2016	B&O	S-Voelkers TD Carter D-Top Acres Supreme Wizard-ET	Wayne E. Sliker St. Paris OH
1915	Kruses All Star Ninja D-02-01 305 14,637 4.2% 608 3.5%P 518P	12/01/2016	B&O	S-Twinkle-Hill Cadnc All-Star D-Kruses Fabulous Jane	Rick Kruse Earlville IA
*1916	La Rainbow Bfly Starstruck 01-11 305 18,500 4.6% 843 3.6%P 671P	12/01/2016		S-Shiloh Brookings Cadence-ET D-La Rainbow Bfly Starlight-ET	Addison A. Goldenberg McGregor TX
*1917	Top Acres C Wizzie Show-ET	12/01/2016		S-Voelkers TD Carter D-Top Acres Supreme Wizard-ET	Elisabeth & Elise Regusci Modesto CA
1918	Udderconfusion P Magnolia	12/01/2016	B&O	S-Mil-K Tonto Paco D-Udderconfusion TM Mahogany	Udder Confusion Dairy Farm Durand IL

1919 Wind Mill Carter Snow Angel D-02-00 305 18,020 4.6% 835 3.4%P 604P	12/01/2016	S-Voelkers TD Carter D-Wind Mill Wonder Snow 1164	E Kueffner, T Packard and M & L Hellenbrand Boonsboro MD
Class 311 Fall Yearling Heifer (not in milk)			
Born 09/01/2016 - 11/30/2016			
Premiums: \$110, 90, 80, 65, 55, 50, 45, 45, 40, 40, 35, 35, 30, 30, 15, 10, 10			
1st Place Award presented by RAD-ical Genetics, the Rucks Family, Okeechobee, FL			
Bred & Owned Award presented by Adams Creek, Eleva, WI			
Junior Premiums: \$30, 20, 15, 10, 5			
Junior Award presented by Ghost Hollow, Oologah, OK			
*1920 Onword Richard Kyla	10/14/2016	S-Jo-Dee Nemo Richard-ET D-Onword Valor Kylee	Carter Kruse Dyersville IA
1921 Nolandale Kingpin Callie	10/05/2016 B&O	S-Jo-Dee Trooper Kingpin D-Trulea Parker Caught You	Chad Nolan Lexington IL
*1922 JC Carter Bella	10/01/2016	S-Voelkers TD Carter D-JC Astronaut Bacardi	Spencer Clark Lacrosse WI
1923 Blessing Gil Josee D-02-00 305 21,420 4.1% 879 3.4%P 719P 365 24,960 4.1% 1,011 3.4%P 852P	09/30/2016 B&O	S-Blessing Mort Garbro Gil-ET D-Blessing Narley Joyanne	Blessing Farms Fort Wayne IN
1924 4th Generation Confetti	09/28/2016	S-Riedland Camelot Faust-ET D-4th Generation Sophia	Lloyd Hardy Black Earth WI
*1925 Pit-Crew Formula Twilight	09/24/2016 B&O	S-Brown Heaven Winningformula-ET D-Pit-Crew Wonder Tropical	L: Abby Foss O: Pit-Crew Genetics Cambridge MN
*1926 Hartmanhills Durham Sizzle	09/15/2016	S-Hilltop Acres W Durham-ET D-To-Bran B Sandy-ET	Bethany Hartman Marshfield WI
1927 Cutting Edge W Trifecta-ET	09/12/2016	S-Manis Glenn Whiskey-ET D-Dublin-Hills Treats	Joshua & Larry Geiwitz Volant PA
1928 Vogrin Fabulous Ping-TW	09/10/2016 B&O	S-Brown Heaven J Fabulous D-Vogrin Parker Priceless	Tammy Voegeli Arlington WI
1929 Round Hill Talant Wilona-ET D-04-00 305 23,790 4.7% 1,109 3.6%P 864P	09/07/2016	S-Cutting Edge Tallant-ET D-Top Acres Garbro Wanda-ET	Ronald & Emily Heffner Hagerstown MD
1930 Top Acres Biver Whiz-ET D-07-05 305 29,962 4.9% 1,482 3.6%P 1,066P 365 35,404 4.9% 1,737 3.6%P 1,246P	09/07/2016 B&O	S-Sherma Blooming Biver D-Top Acres Supreme Wizard-ET	Wayne E. Sliker St. Paris OH
1931 Jaden Le Go	09/06/2016 B&O	S-R N R Supreme Lebron D-Mill Wheel B Grateful	Hayden Hauschildt Ellsworth WI
1932 Cutting Edge C Ruffles-ET D-04-03 305 24,789 4.1% 1,016 3.6%P 892P	09/05/2016 B&O	S-Voelkers Wndt Chillii Pepper D-Bittersweet Victor Roxanne	Ken Main and Peter Vail Copake NY
1933 Twinkle-Hill Pan Stark 1181	09/05/2016 B&O	S-Hilltop Acres JK Panama D-Twinkle-Hill King Starbucks	Jeannie & Laurie Winkelman Watertown WI
1934 Dublin Hills Sawyer-ET	09/04/2016	S-Cutting Edge Tallant-ET D-Dublin-Hills Sasha-ET	John & Bonnie Ayars and Dr. Kenny Manion Mechanicsburg OH
1935 Fairdale Hill Braiden Shey-ET	09/02/2016	S-Blessing Tex Braiden-ET D-Dublin Hills Shaeley	Leslie & Linda Bruchey Westminster MD

1936 Xtreme Flash Eclipse	09/02/2016	S-Top diMark Dynasty Flash D-Extreme Pepper Equisite	Tammy Voegeli and Louis & Garen Oliveira Arlington WI
1937 Brown Heaven N Falbala	09/01/2016	S-Norwin	Wayne E. Sliker St Paris OH
D-01-09	305 25,291 4.3% 1,085 3.8%P 952P	D-Brown Heaven J Fancy-ET	
	365 29,121 4.3% 1,257 3.8%P 1,113P		
1938 DeVores Delite Phalicity	09/01/2016	S-Hilltop Acres PP Delite D-Steubers George Pheobe	Kayla (Devore) Whipple Wilton IA
*1939 Ferrand Bosephus Farrah	09/01/2016	S-Jobo Wonder Bosephus-ET	Keaton & Kinley Topp
01-09	305 18,732 4.3% 804 3.2%P 601P	D-Ferrand Braiden Joey-ET	Botkins OH
*1940 Johann Jongleur Amaze	09/01/2016	S-Jolahofs Polo Jongleur	Madelyn Topp
10-07	93 5,405 3.0% 160 3.1%P 168P	D-Johann Adrift	Wapakoneta OH
	365 17,878 3.3% 596 3.5%P 631P		
1941 RADical Carrier Peep Show	09/01/2016 B&O	S-Kulp-Terra Carl Carrier-ET	Lindsey Rucks
D-06-11	305 30,125 4.1% 1,235 3.6%P 1,084P	D-Kulp-Terra TA Showgirl-ET	Okeechobee FL
	365 35,800 4.1% 1,375 3.6%P 1,202P		

Class 315 Junior Champion Female of the Junior Show

Award presented by Lee-Ann's Swiss LLC, Lee Barber, Dewitt, IA
 Chromado Clipper and Lister Star Clipper presented by Wahl Clipper & Lister Shearing, Sterling, IL
 Champion Banner presented by Select Sires, Inc., Plain City, OH
 Rosette presented by Second Look Holsteins, LLC, the Hodorff Family, Eden, WI

Class 316 Reserve Junior Champion of the Junior Show

Award presented by Almost Mine Farms, LLC, Tom, Roberta & Jason Hoesly, Brodhead, WI
 Reserve Champion Banner presented by Select Sires, Inc., Plain City, OH
 Rosette presented by Second Look Holsteins, LLC, the Hodorff Family, Eden, WI

Class 317 Junior Champion Female

Norman E. Magnussen Memorial Award presented by E-Zee Milking Equipment, LLC, McFarland, WI
 Champion Banner presented by Select Sires, Inc., Plain City, OH
 Rosette presented by GenOvations, Lodi, WI

Class 318 Reserve Junior Champion Female

Award presented by Royal Hill Swiss, Don Graft, Fort Wayne, IN
 Reserve Champion Banner presented by Select Sires, Inc., Plain City, OH
 Rosette presented by Rivendale Farms, Bulger, PA

Class 319 Junior Best Three Females

Group to consist of 3 animals Fall Yearling (not in milk) and younger, none of which have freshened. All three animals must have been bred by exhibitor and at least one owned by exhibitor. Partnership bred animals, outside the family, may not be included in this class. Each exhibitor limited to one entry.

Premiums: \$75, 65, 55, 45, 35

1st Place Award presented by Elite Dairy, Peter Vail and Ken Main, Copake, NY

1942 Armbruster Bros Farms Inc
Muscodia WI

1943 Blessing Farms
Fort Wayne IN

1944 Brown Heaven
Verchères QC

1945 Delbert & Heather Yoder
West Salem OH

1946 Golden Gate Farms
Abbotsford BC

1947 Hill's Valley Farm, LLC
Cattaraugus NY

1948 Ken Main and Peter Vail
Copake NY

1949 Ken Main and Peter Vail
Copake NY

1950 L: Abby Foss O: Pit-Crew Genetics
Cambridge MN

1951 Larry & Jennifer Meyer
Chilton WI

1952 Laurie A. Winkelman
Watertown WI

1953 Lindsey Rucks
Okeechobee FL

1954 M & M Swiss - Matt, Megan, Jake & Levi Stuessel
Alma Center WI

1955 Nick Uglow
Watertown WI

1956 Olivia Love
Scottsdale PA

1957 Pit-Crew Genetics
Cambridge MN

1958 Rick Kruse
Earlville IA

1959 Steven D. Watts
Killbuck OH

1960 Wayne E. Sliker
St. Paris OH

Class **320 Genomic Merit of the Heifer Show**
Award presented by Brown Swiss Cattle Breeders Association

Class **321 Premier Breeder of Heifer Show**
Royal Banner presented by Suneslope Farm, Madison, WI

Class **322 Premier Exhibitor of Heifer Show**
Royal Banner presented by Rivendale Farms, Bulger, PA

Class **323 Premier Sire of the Heifer Show**
Royal Banner presented by Rivendale Farms, Bulger, PA

Class **325 Yearling Heifer in Milk (must have freshened)**

Born 09/01/2016 - 12/31/2016

Premiums: \$200, 150, 135, 125, 115, 105

1st Place Award presented by Elite Dairy, Peter Vail and Ken Main, Copake, NY

Bred & Owned Award presented by Armbruster Bros. Farms, Inc., the Armbruster Family, Muscoda, WI

Best Udder Rosette presented by Cattle Connection, Amery, WI

Junior Premiums: \$30, 20, 10, 10, 10

Junior Award presented by Hilltop Acres Farm, Dennis & Barb Mashek, Calmar, IA

1961	Blessing Biver Felica-ETV								12/09/2016	S-Scherma Blooming Biver D-Blessing Dynasty Fern-ET	Ken Main and Peter Vail Copake NY
1962	Joshry Durham Brynn								10/11/2016	S-Hilltop Acres W Durham-ET D-Joshry Pepper Victoria	William Kelly III & Nate Goldenberg McGregor TX
1963	All-Glo Tray Paradigm								10/06/2016 B&O	S-Shen-Val OMF Leg Tray-ET D-Just-In Agenda Parvel	Justin & Ashley Kaufman Berlin PA
	D-03-08	305	15,704	4.6%	720	3.6%P	560P				
		365	18,621	4.6%	858	3.6%P	675P				
1964	Just So D Belle								09/30/2016 B&O	S-Hilltop Acres W Durham-ET D-Jobo Be My Valentine-ET	Just So Farm Lake Mills WI
	D-03-11	305	24,943	4.5%	1,127	3.5%P	867P				
		365	9,891	4.5%	1,399	3.5%P	1,057P				
1965	Double W Cadence Cally								09/27/2016	S-Shiloh Brookings Cadence-ET D-CIE Double W Lebron Clipper	Double W Dairy and Udder Confusion Dairy Farm Durand IL
	01-09	65	3,380	3.9%	528	3.4%P	360P				
*1966	Cal-Ticino Flash Oprah								09/24/2016	S-Top diMark Dynasty Flash D-Oprahs James Little O	Hunter Glass Modesto CA
	D-02-02	252	14,240	4.0%	570	3.2%P	455P				
1967	Kruses Carter Jewel-ET								09/20/2016 B&O	S-Voelkers TD Carter D-Kruses Victor Jiterbug-ET	Rick Kruse Earlville IA
	D-04-06	294	21,172	4.2%	886	3.6%P	756P				
1968	Round Hill Braidr Wanita-ET								09/20/2016	S-Blessing Tex Braiden-ET D-Top Acres Garbro Wanda-ET	Lindsey Rucks and Jenna Hoffman Okeechobee FL
	D-04-00	305	23,790	4.7%	1,109	3.6%P	864P				
1969	Johann American								09/19/2016 B&O	S-Shiloh Brookings Cadence-ET D-Johann Anchorage	Madelyn Topp Wapakoneta OH
	D-03-07	305	21,038	3.5%	851	3.6%P	794P				
*1970	CIE Sugar Brook S Dream								09/13/2016	S-Cutting Edge Seaman D-IE Sugar Brook G Disney	L: Kaleigh Krueger; O: Joni Gill Albany WI
1971	Ace-N-Spades Faust Lainey								09/12/2016 B&O	S-Riedland Camelot Faust-ET D-Ace-N-Spades Goldwyn Lia	Beth Nelson Blair WI
	D-04-06	305	21,668	3.7%	826	3.3%P	756P				
1972	Just So B Wish								09/11/2016 B&O	S-Scherma Blooming Biver D-Just So L Winsome	Just So Farm Lake Mills WI
	D-02-00	305	17,545	3.7%	651	3.2%P	561P				
		365	796	3.7%	770	3.2%P	666P				
*1973	Lucky Charms A Fling								09/03/2016 B&O	S-Oak View Zeus August D-Lucky Charms Agenda Festive	L: Lila Kilsdonk; O: Heidi Heller Seymour WI
1974	Kulp-Gen Thunder Busy Bee-ET								09/02/2016	S-Cutting Edge Thunder D-Cutting Edge Tit Beauty-ET	Scott & Ashley Schugel Shawano WI
1975	Lone Acres C Jazz								09/02/2016 B&O	S-Voelkers TD Carter D-Lone Acres PS Janie	Emily Kipp North Prairie WI
	D-08-09	243	10,209	3.8%	393	3.4%P	350P				
1976	Bradner-4G Brook Betty-ET								09/01/2016 B&O	S-R N R Payoff Brookings-ET D-Bradner Pasture Bedtime-ET	Golden Gate Farms Abbotsford BC

1977 Robland Anibal Bailee-ET D-06-01	305 25,622 4.6% 1,179 3.2%P 824P	09/01/2016 B&O	S-Scharz Bs Vigor Anibal-ET D-Robland Brookings Brownie 26	Robert Landgraf Jackson MO
1978 VB HP Norwin Teanna-ET D-03-04	305 20,649 4.4% 922 3.4%P 703P 365 23,108 4.4% 1,016 3.4%P 789P	09/01/2016 B&O	S-Norwin D-Sun-Made Whiskey Tea	Voegeli Farm, Inc. and Hillpoint Partners Monticello WI
1979 VB HP Norwin Tyra-ET D-03-04	305 23,510 4.4% 922 3.4%P 703P 365 23,108 4.4% 1,016 3.4%P 789P	09/01/2016	S-Norwin D-Sun-Made Whiskey Tea	Hilary Damke Monticello WI
1980 Voelkers Carter Boob D-05-07	305 20,617 4.4% 901 3.8%P 775P 307 20,731 4.4% 905 3.8%P 779P	09/01/2016 B&O	S-Voelkers TD Carter D-Voelkers FD Bella	Chad Voelker Perryville MO

Class 327 Junior Two-Year-Old Cow

Born 03/01/2016 - 08/31/2016

Premiums: \$200, 150, 135, 125, 115, 105, 95, 90, 85, 80, 70, 65, 60, 50, 45

1st Place Award presented by Muffets Twin Acres, Jacob & Elizabeth Roedl, Edgewood, IL

Bred & Owned Award presented by Brothers Three Brown Swiss, the Hushon Family, North Prairie, WI

Best Udder Rosette presented by Cattle Connection, Amery, WI

Junior Premiums: \$30, 20, 10

Junior Award presented by RAD-ical Genetics, the Rucks Family, Okeechobee, FL

1981 Voelkers Norwin Maid D-04-11	171 6,755 3.3% 225 3.6%P 243P	07/28/2016 B&O	S-Norwin D-Voelkers Galaxy Model	Chad Voelker Perryville MO
1982 Shanks Protege Jenna 192 D-04-09	305 20,943 4.1% 862 3.5%P 725P	07/26/2016 B&O	S-Pit Crew Pepper Protege D-Just So A Jubilation	Philip Shanks Harvard IL
*1983 Goldfawn Victor Suzie D-03-01	247 16,659 3.8% 676 3.6%P 586P	07/22/2016 B&O	S-SCF Jet Victor-Twin D-Terra Rose T Sabrina-ET	Addison A. Goldenberg McGregor TX
*1984 KE Shea Trace Sapphire D-02-00	305 23,856 4.4% 1,047 4.0%P 966P	07/21/2016	S-Cozy Nook Wonderment Trace D-CIE KE Sadie Pepper Shea	Kiele Eberling Postville IA
1985 DeVores Delite Pecca		07/19/2016 B&O	S-Hilltop Acres PP Delite D-DeVores Goldrush Piper	Kayla (Devore) Whipple Wilton IA
1986 Kuhlkwos Total Brooklyn-ET D-07-05	305 23,835 4.2% 1,001 3.2%P 766P 350 25,908 4.2% 1,087 3.3%P 844P	07/03/2016 B&O	S-Sunnyisle Total-ET D-Blue Heaven JW Barclay-ET OCS	Michala Kuhlman Athens PA
1987 Power Line KP Waverly-ET D-05-04	305 25,710 4.7% 1,208 3.8%P 972P 365 30,440 4.8% 1,451 3.8%P 1,166P	06/26/2016	S-Jo-Dee Trooper Kingpin D-Round Hill Prem Wishlist-ET	Frosted Beauty Swiss Epworth IA
1988 Bradner B Forget Me Not		06/10/2016 B&O	S-Scherma Blooming Biver D-Brown Heaven Bonanza Frosty	Golden Gate Farms Abbotsford BC
*1989 Milk & Honey Richard Tempest D-03-02	305 14,531 3.5% 502 3.2%P 462P	06/07/2016	S-Jo-Dee Nemo Richard-ET D-Milk & Honey Bonanza Tegan-ET	Aubree, Aiden & Alaina Topp Botkins OH
1990 Jo-Dee Supreme Rosette-ET		06/05/2016	S-Old Mill WDE Supreme-ET D-Jo-Dee Nemo Risky	Bruce Jenks Hadley MA
*1991 Trackside Java Cadillac D-02-11	305 22,564 3.4% 779 3.0%P 683P	06/04/2016 B&O	S-Mort Blessing Dynsty Java D-Trackside Wonderment Cassidy	Otis, Malcolm & Quincee Johnson Evansville WI

1992	Power Line Rich Whatever-ET	06/02/2016	S-Jo-Dee Nemo Richard-ET	Just So Farm
	D-06-07 305 29,390 4.1% 1,187 3.4%P 983P		D-Round Hill Prem Wishlist-ET	Lake Mills WI
	365 34,830 4.1% 1,443 3.4%P 1,197P			
1993	Brown Heaven Gboy Bubblegum-ET	06/01/2016 B&O	S-Studer's Bs Glen Genox-Boy	Brown Heaven
	D-04-00 305 24,357 4.5% 1,105 3.4%P 822P		D-Brown Heaven Thunder Betsy	Verchères QC
1994	Latimore Braiden Twinkie	06/01/2016	S-Blessing Tex Braiden-ET	Lindsey Rucks
	02-00 42 2,432 3.1% 75 2.6%P 63P		D-Latimore Leg Tray Twinkle	Okeechobee FL
1995	IE Ros-Sue-Kle Charm	05/29/2016 B&O	S-Ros-Sue-Kle Victory	Ross & Sue Kleingartner
	D-02-00 249 12,351 4.5% 559 3.4%P 422P		D-IDR Ros-Sue-Kle Cherry-TW	Gackle ND
1996	Cutting Edge B Kandy	05/09/2016	S-Cutting Edge Baxter	Ferme Intense, A Beauchemin and Ferme P Boulet
			D-Cutting Edge T Kara	Ste-Brigitte Des Sauls QC
1997	Vogrin Strictly Business	04/30/2016 B&O	S-Jo-Dee Denmark Rosco	Tammy Voegeli
	D-03-07 305 25,856 4.2% 1,100 3.8%P 837P		D-Vogrin Galaxy Shanigans	Arlington WI
*1998	Elder Creek August Pam	04/19/2016	S-Oak View Zeus August	Amber Heisler and Caleb Whittemore
	D-06-07 305 14,864 4.8% 723 3.3%P 447P		D-Elder Creek Jet Peggy	Springport MI
1999	Red Brae Spa Carter Millie	04/07/2016 B&O	S-Voelkers TD Carter	Steven Armbruster
	02-01 70 4,204 3.3% 140 2.9%P 123P		D-Red Brae Spa Vigor Miley	Muscoda WI
2000	Double W Brady Incense	03/29/2016	S-Shiloh Jackson Brady-ET	Double W Dairy and Udder Confusion Dairy Farm
	01-11 198 11,480 4.6% 528 3.2%P 367P		D-Double W Chaplin Intense-TW	Durand IL
*2001	LJF Seamans Coll Party	03/29/2016 B&O	S-Cutting Edge Seaman	Jacob B. Johns
	D-07-11 60 546 3.0% 164 3.3%P 18P		D-Dmf Parker Laney	Chapel Hill TN
*2002	Cutting Edge S Daisy	03/26/2016 B&O	S-Cutting Edge Seaman	Kyle Barton
			D-Towpath Agenda Dancer	Copake NY
2003	Round Hill Braiden Fenny	03/23/2016	S-Blessing Tex Braiden-ET	Hill's Valley Farm, LLC
	02-02 61 4,391 3.6% 158 2.8%P 123P		D-Round Hill Wonder Fenway-ET	Cattaraugus NY
2004	Brown Heaven T Frootloops	03/14/2016 B&O	S-Sunnyisle Total-ET	Brown Heaven
	01-10 196 13,208 4.3% 573 3.5%P 467P		D-Brown Heaven Glenn Fantasy	Verchères QC
*2005	Jenlar Carter Waltz-ETV	03/14/2016	S-Voelkers TD Carter	Brianna Meyer
	02-01 98 8,395 3.7% 309 3.1%P 259P		D-Top Acres Garbro S Wish-ET	Chilton WI
2006	VB HP Bring Me A Mimosa	03/14/2016	S-Jobo Wonder Bosephus-ET	Jeremy & Kelsi Mayer
	02-03 57 2,010 3.3% 67 3.1%P 62P		D-VB HP DY Warrenty Melida	Monroe WI
2007	Cutting Edge B Truffles	03/09/2016 B&O	S-Scherma Blooming Biver	Ken Main and Peter Vail
			D-Cutting Edge T Trudy-ET	Copake NY
2008	Locin NV F Satin	03/07/2016	S-Brown Heaven Winningformula-ET	John & Bonnie Ayars and Dr. Kenny Manion
	D-04-02 157 17,849 3.5% 624 3.7%P 665P		D-Locin Braiden Silk	Mechanicsburg OH
2009	VB CV Seaman Royalty	03/07/2016 B&O	S-Cutting Edge Seaman	Chris Voegeli
	D-04-08 305 29,443 4.5% 1,329 3.6%P 1,052P		D-VB CV Grand Royal-ET	Monticello WI
	365 32,560 4.5% 1,477 3.6%P 1,170P			
2010	Blessing Formula Flourish	03/06/2016 B&O	S-Brown Haven Winning Formula-ET	Blessing Farms
	D-02-02 305 22,618 4.0% 900 3.2%P 726P		D-Blessing Pepper Flair	Fort Wayne IN
	365 27,759 4.1% 1,131 3.2%P 900P			

2011 Muffets Twin Acre Ms Kandid 02-00 161 10,043 4.2% 415	03/04/2016 3.3%P 296P	S-Cutting Edge Kingsman D-Muffets Twin Acre Ant Dani	Heidi Roulet, Allyn Paulson and Tammy Voegeli Arlington WI
2012 Colorblind Rich Deanna	03/03/2016	S-Jo-Dee Nemo Richard-ET D-Colorblind Daisy-ET	Allan Brisson Vergennes VT
2013 Miss Twilight Fling 02-00 125 9,322 3.3% 335	03/03/2016 B&O 3.2%P 327P	S-Cozy Nook Twilight Twin D-Miss Pepper Flash-ET	Jeff Rupp and Kieth & Pam Lowe West Saalem OH
*2014 SCF PK Lynx Trinket	03/03/2016	S-Tierra Verde LJ Lynx D-SCF PK Secret Trinket	Jaelyn Jobe Bridgeport TX
*2015 Goldfawn Braiden Adeana D-03-05 305 19,360 3.0% 586	03/02/2016 B&O 3.4%P 655P	S-Blessing Tex Braiden-ET D-Goldfawn Titm Ms America	Addison A. Goldenberg McGregor TX
2016 Jaden Rich Dorito 02-05 148 11,100 3.8% 422	03/01/2016 B&O 3.4%P 377P	S-Jo-Dee Nemo Richard-ET D-Jaden El Dorado	Hayden Hauschildt Ellsworth WI
Class 328 Senior Two-Year Old Cow			
Born 09/01/2015 - 02/29/2016			
Premiums: \$200, 150, 135, 125, 115, 105, 95, 90, 85, 80, 70, 65, 60, 50, 45			
1st Place Award presented by Elite Dairy, Peter Vail and Ken Main, Copake, NY			
Bred & Owned Award presented by Round Hill Acres, Cynthia Warner, Frederick, MD			
Production Award presented by Prairie Farms, Edwardsville, IL			
Best Udder Rosette presented by Cattle Connection, Amery, WI			
Junior Premiums: \$30, 20, 10			
Junior Award presented by Elite Dairy, Peter Vail and Ken Main, Copake, NY			
2017 Kruses Carter Keeper-ET 02-01 119 8,145 4.0% 324	02/26/2016 B&O 2.9%P 234P	S-Voelkers TD Carter D-Kruses Victor Keeper-ET	Rick Kruse Earlville IA
2018 Jo-Dee Glamorous Nancy-ET	02/06/2016	S-Schamaun BS Gordon Glenn-ET D-Jo-Dee Prelude Nancy-ET	Ken Main and Peter Vail Copake NY
2019 VB HP Carters Milkshake 02-03 76 5,361 3.7% 198	02/05/2016 B&O 3.0%P 160P	S-Voelkers TD Carter D-VB Tot Milkshake-ET	Voegeli Farm, Inc. and Hillpoint Partners Monticello WI
*2020 Open-Road C Pepper Who-Izit 02-01 111 5,203 4.1% 204	01/26/2016 B&O 3.1%P 164P	S-Voelkers Wndt Chili Pepper D-Top Acres Grand Wizit-ET	Amy Hughes Killbuck OH
*2021 Sugar Brook B Delilah	01/24/2016	S-Blessing Tex Braiden-ET D-Sugar Brook P Dahilia	Kaleigh Krueger Albany WI
2022 Cutting Edge B Trail-ETV 01-11 245 16,737 5.0% 832	12/18/2015 3.8%P 640P	S-Scherma Blooming Biver D-Dublin Hills Treats	Laurie A. Winkelman Watertown WI
*2023 Thataway Twisters Tenacity D-03-10 305 19,183 4.8% 926	12/16/2015 B&O 3.8%P 737P	S-Riedland Camelot Faust-ET D-Riedland Jaguar Viv	Cole Mahlkuich Juda WI
2024 Cutting Edge C Kadie-ET 02-04 89 4,873 4.6% 215	12/15/2015 B&O 3.5%P 164P	S-Voelkers TD Carter D-Eloc Wagor Kandid	Ken Main and Peter Vail Copake NY
*2025 Cutting Edge C Kitty-ET 02-06 25 1,800 3.8% 80	12/15/2015 3.2%P 60P	S-Voelkers TD Carter D-Eloc Wagor Kandid	Nicholas Love Scottdale PA
2026 Sun-Made Elite Noreen-ET 02-03 163 10,410 4.3% 447	12/12/2015 2.8%P 292P	S-Snow Valley Tbar Powerplay D-Jo-Dee Wondermint Nuclear-ET	Don Graft Oxford WI
2027 Rad-ical Goliath Good Luck D-02-08 305 17,630 4.1% 731	12/07/2015 3.3%P 587P	S-Old Mill Tray Goliath-ET D-Rad-ical B Glamorous	Terri Packard and Cynthia Warner Boonsboro MD

*2028	Stone Hill Blooms Blossom					12/07/2015	S-Blessing Tex Braiden-ET	Brooke J Soffer
	02-09	226	20,939	3.9%	871	3.4%P 707P	D-Empire Legacy Bloom	Portageville NY
*2029	Sun-Made Elite Neith-ET					12/03/2015	S-Old Mill WDE Supreme-ET	Leif Thompson
							D-Jo-Dee Wondement Nuclear	Viroqua WI
2030	R Hard BJ 25					12/02/2015	S-Blessing Braiden James-ET	Leslie & Linda Bruchey
	02-07	212	19,940	4.2%	842	3.4%P 681P	D-R Hart Whiskey 953-ET	Westminster MD
2031	Eloc Biver Rennie					12/01/2015	S-Scherma Blooming Biver	Pierre Boulet and Yvon Sicard
	D-03-00	305	21,466	4.4%	946	3.9%P 847P	D-Eloc Brookings Rascal	St-Justin QC
		311	21,735	4.4%	955	3.9%P 855P		
2032	Glenmar-Dale Seaman Poppy					11/02/2015 B&O	S-Cutting Edge Seaman	Becky Brown
	D-04-03	305	19,536	4.6%	898	3.5%P 688P	D-Glenmar-Dale Agenda Petunia	Stitzer WI
2033	Top Acres Braiden Wiza-ET					10/07/2015	S-Blessing Tex Braiden-ET	Lindsey Rucks
	02-04	141	10,602	3.9%	415	3.2%P 342P	D-Top Acres Supreme Wizard-ET	Okeechobee FL
*2034	Red Brae Brookings Triana J					10/06/2015	S-R N R Payoff Brookings-ET	Elise Bleck
	02-05	145	11,090	3.9%	438	3.3%P 361P	D-Red Brae Berretta Trina J	Muscoda WI
2035	Triangle Acres Pandora-ET					09/18/2015 B&O	S-Jo-Dee Nemo Richard-ET	Rebecca Korth
	D-04-09	305	25,278	4.4%	1,113	3.5%P 894P	D-Triangle Acres Dally Pisces	Freeport IL
		365	29,772	4.4%	1,322	3.6%P 1,075P		
2036	Bradner Genox-Boy Hillbilly HW-ET					09/11/2015	S-Studer's Bs Glen Genox-Boy	Golden Gate Farms
	02-09	51	19,606	3.4%	800	3.2%P 677P	D-Ja-Ka Hillary Hillbilly	Abbotsford BC
2037	Brown Heaven Biver Frenchfries-ET					09/10/2015 B&O	S-Scherma Blooming Biver	Brown Heaven
	01-10	305	8,522	5.0%	423	3.8%P 326P	D-Brown Heaven Manchest Freckles	Verchères QC
2038	Blessing Prize Nadine					09/09/2015 B&O	S-Blessing WD Prize	Blessing Farms
	D-04-05	305	22,876	4.1%	937	3.6%P 816P	D-Blessing Bonanza Novice	Fort Wayne IN
		365	26,766	4.1%	1,101	3.5%P 950P		
2039	Double W Cadence Carolina					09/06/2015	S-Shiloh Brookings Cadence-ET	Double W Dairy and Udder Confusion Dairy Farm
	01-10	305	20,674	3.8%	794	3.4%P 707P	D-SDF Yall River Chalina-ET	Durand IL
		330	21,818	3.8%	834	3.4%P 746P		
2040	QC-Edge Thunder Rosebud					09/06/2015	S-Cutting Edge Thunder	Lindsey Rucks
	02-07	73	4,586	3.7%	169	3.1%P 141P	D-QC-Edge Rosemary-ET	Okeechobee FL
2041	Horseshoe Hill Hot Toddy					09/05/2015 B&O	S-Sunnyisle Total-ET	Joyce Uglow
	01-11	305	15,710	4.3%	680	3.5%P 553P	D-Random Luck Koors On Taps	Watertown WI
*2042	Siegerts Braiden Sheena					09/05/2015	S-Blessing Tex Braiden-ET	Coltin, Morgan, Claytin & Mady Wingert
	02-11	62	67	4.7%	176	3.3%P 122P	D-Vin Vic T B Sincere	Harmony MN
2043	Sun-Made Elite Nova-ET					09/04/2015	S-Old Mill WDE Supreme-ET	John & Bonnie Ayars and Kenny & Kelly Manion
							D-Jo-Dee Wonderment Nuclear-ET	Mechanicsburg OH
2044	Hoodstead Goliath Peach-ETV					09/01/2015	S-Old Mill Tray Goliath-ET	Joe Sparrow
	02-01	305	23,710	4.2%	999	3.4%P 817P	D-Hoodstead Vigor Perfecta	Owenton KY

2045 Lee-Anns Durham Finley	09/01/2015	S-Hilltop Acres W Durham-ET D-Lee-Anns Charge Firefly	Ken Main and Peter Vail Copake NY
*2046 Red Brae Faust Lisetta E 02-06 160 9,544 4.2% 400 3.1%P 298P	09/01/2015 B&O	S-Riedland Camelot Faust-ET D-Red Brae Nemo Lisee	Elise Bleck Muscodia WI
Class 332 Junior Three-Year-Old Cow			
Born 03/01/2015 - 08/31/2015			
Premiums: \$200, 150, 135, 125, 115, 105, 95, 90, 85, 80, 70, 65, 60, 50, 45			
1st Place Award and Bred & Owned Award presented by Royal Hill Swiss, Don Graft, Fort Wayne, IN			
Production Award presented by Prairie Farms, Edwardsville, IL			
Best Udder Rosette presented by Cattle Connection, Amery, WI			
Junior Premiums: \$30, 20, 10			
Junior Award presented by Dairy Agenda Today, Bashor, KS			
2047 Red Brae Spa August Lillia 02-08 114 8,153 4.2% 346 3.0%P 243P	08/12/2015 B&O	S-Oak View Zeus August D-Red Brae Spa Brookings Lila	Steven Armbruster Muscodia WI
2048 Kruseland Jeopardy Flourish 02-01 305 16,256 4.3% 698 3.2%P 519P	07/13/2015 B&O	S-Kruses Lebron Jeopardy D-Kruseland Vintage Flower	Rick Kruse Earlville IA
2049 Double W Chacal Gazell 01-11 279 21,780 3.7% 800 3.2%P 690P	06/19/2015	S-SDF Yaal River Chacal-ET D-Double W Wunder Gist	Double W Dairy and Udder Confusion Dairy Farm Durand IL
2050 Blessing Mort Osborn Vica-ETV 02-00 305 21,054 4.2% 892 3.4%P 713P 365 25,136 4.3% 1,079 3.4%P 856P	06/12/2015 B&O	S-Voelkers Wndt Chilli Pepper D-Alpine Hills Star Venus-ET	Blessing Farms Fort Wayne IN
*2051 Cutting Edge S Suri 02-00 296 14,155 4.9% 698 3.8%P 540P	06/08/2015 B&O	S-Cutting Edge Streamline D-Cutting Edge P Sherry	Micheal Barton Copake NY
*2052 Top Acres HP B Winning-ET 02-00 305 14,801 5.2% 766 3.4%P 508P 352 16,631 5.2% 849 3.4%P 570P	06/05/2015	S-Mort Legacy Bonanza D-Top Acres Supreme Wizard-ET	John Henry Hughes Killbuck OH
*2053 Iroquois Acres Jong Cali 02-01 305 14,562 4.0% 584 3.6%P 518P	06/03/2015	S-Jolahofs Polo Jongleur D-Iroquois Ares Terror Carly	Matthew Pacheco Canton De Hatley QC
2054 Brown Heaven Biver Fay 02-03 304 18,977 5.1% 968 3.7%P 710P	06/02/2015 B&O	S-Scherma Blooming Biver D-Brown Heaven J Fancy	Brown Heaven Verchères QC
2055 Brown Heaven B Sweety Dally ET 02-02 305 22,952 5.3% 1,210 3.7%P 847P	06/01/2015 B&O	S-Scherma Blooming Biver D-Brown Heaven Tract Sweet Dally	Brown Heaven Verchères QC
2056 Brown Heaven Glenn Fanny-ET 02-00 305 19,487 4.1% 796 3.6%P 705P	06/01/2015 B&O	S-Schamaun BS Gordon Glenn-ET D-Swiss Dream Agenda Faith	Brown Heaven Verchères QC
2057 R-Plaine Richard Legend 03-02 305 17,536 3.6% 615 3.3%P 577P	06/01/2015 B&O	S-Jo-Dee Nemo Richard-ET D-R-Plaine Legacy Lissa	Jon & Alexis Retzlaff Belle Plaine WI
2058 IE Twinkle-Hill Bush Jengas 01-08 305 17,076 4.6% 788 3.6%P 610P 365 20,631 4.7% 961 3.7%P 759P	05/22/2015 B&O	S-Jobo Vigor Bush-ET D-IDR Twinkle-Hill Emerg Jenga	John & Dee Winkelman Watertown WI
2059 Hills Valley B Run Away 02-01 305 16,631 4.2% 703 3.5%P 589P	04/20/2015 B&O	S-Blessing Tex Braiden-ET D-Hills Valley Dynasty Raven	Hill's Valley Farm, LLC Cattaraugus NY
*2060 Niermans Braiden Lace 02-00 305 14,923 4.0% 596 3.3%P 495P 364 17,427 4.0% 694 3.4%P 587P	04/12/2015 B&O	S-Blessing Tex Braiden-ET D-Niermans Gslam Livia	Ryland & Brayton Nierman Brownstown IN

*2061	Top diMark Bush Faith		04/02/2015		S-Jobo Vigor Bush-ET D-Top diMark Parker Fanny-ET	Elise Regusci Modesto CA
2062	Horseshoe Hill Nu Icecream		03/20/2015	B&O	S-SCF Jet Victor-Twin D-Browns Izzys Icee	Nick Uglow Watertown WI
	02-00	305 10,683	3.6%	388 3.3%P 357P		
*2063	Almost Mine Surge Adrianna		03/18/2015		S-Cutting Edge Surge D-Almost Mine Mains Apple Pie	Landen Knapp Epworth IA
	03-02	54 5,385	4.5%	243 3.2%P 170P		
2064	Old Mill Braiden Cinnamon		03/16/2015		S-Blessing Tex Braiden-ET D-Old Mill E Snickerdoodle	Allen Bassler Jr. Sarasota FL
	03-00	6 600	3.8%	23 3.2%P 18P		
2065	DeVores Martini Pheona		03/14/2015	B&O	S-Hilltop Acres CP Martini-ET D-Steubers George Phoebe	Kayla (Devore) Whipple Wilton IA
	02-01	305 32,582	4.3%	1,388 3.5%P 1,146P		
2066	Just-In Braiden Paradise		03/12/2015	B&O	S-Blessing Tex Braiden-ET D-Just-In Agenda Parvel	Justin & Ashley Kaufman Berlin PA
	02-04	275 11,105	3.9%	441 3.2%P 365P		
*2067	IE Hylight Bosephus Callie		03/11/2015		S-Jobo Wonder Bosephus-ET D-IDR Hylight Pepper Cayenne	Elizabeth D Schieferstine Vernon NY
	02-06	46 4,233	3.7%	157 2.8%P 120P		
2068	Voelkers Teller Cupcake		03/09/2015	B&O	S-Blessing Bonanza Teller-ET D-Voelkers Thunder Cupid	Chad Voelker Perryville MO
	02-01	305 15,683	3.8%	602 3.6%P 563P		
		365 17,391	3.9%	685 3.6%P 632P		
*2069	Cutting Edge T Taylor-ET		03/05/2015		S-Cutting Edge Thunder D-Cutting Edge L Taffy	Aubree, Aiden & Alaina Topp Botkins OH
	02-03	305 11,572	4.1%	470 3.7%P 423P		
2070	Random Luck Purple Rosette-ET		03/04/2015		S-R N R Supreme Lebron D-Random Luck V Precious	Robbie Watson Darlington WI
	03-00	103 8,653	5.6%	486 3.0%P 258P		
2071	Arthurst Sunlove-ET		03/02/2015		S-Jolahofs Polo Jongleur D-Bridge View Romancer Susann	Bill & Lynn Vanderham Hillsboro IA
	02-02	305 21,658	4.0%	865 3.1%P 702P		
2072	Cutting Edge V Tory-ET		03/02/2015		S-SCF Jet Victor-Twin D-Dublin-Hills Treats	Just So Farm Lake Mills WI
	02-01	251 14,480	4.3%	617 3.6%P 517P		
*2073	Toppview Woods Push It		03/02/2015	B&O	S-Jolahofs Polo Jongleur D-CIE Car A Mac Peggy Plunder	Keaton & Kinley Topp Botkins OH
	03-02	305 18,609	4.6%	871 3.7%P 712P		
2074	Wittspride Mias Marie		03/02/2015		S-Hilltop Acres W Durham-ET D-Wittspride Minnies Mia	Goldfawn, Wittspride and Random Luck Farm Darlington WI
	02-11	153 9,344	3.7%	342 3.1%P 288P		
2075	USA C Saffron		03/01/2015		S-R Hart Cayenne Pepper D-Top Acres M W Sunny	Hager Hill Holsteins and Swiss Ellsworth WI
	03-05	200 13,026	3.6%	508 3.5%P 445P		
2076	VB HP Pepper Whammer-ET		03/01/2015	B&O	S-R Hart Cayenne Pepper D-VB HP Faust Whami-ET	Voegeli Farm, Inc. and Hillpoint Partners Monticello WI
	02-00	305 18,940	5.1%	914 3.9%P 714P		
		365 21,866	5.0%	1,093 3.9%P 844P		

Class 333 Senior Three-Year-Old Cow

Born 09/01/2014 - 02/28/2015

Premiums: \$200, 150, 135, 125, 115, 105, 95, 90, 85, 80, 70, 65, 60, 50, 45

1st Place Award presented by Elite Dairy, Peter Vail and Ken Main, Copake, NY

Bred & Owned Award presented by PortaCheck, Inc., Moorestown, NJ

Production Award presented by Prairie Farms, Edwardsville, IL

Best Udder Rosette presented by Cattle Connection, Amery, WI

Junior Premiums: \$30, 20, 10

Junior Award presented by Dairy Agenda Today, Bashor, KS

2077	Twinkle-Hill Bush Raquel	02/10/2015	B&O	S-Jobo Vigor Bush-ET	John & Dee Winkelman				
	02-01	305	20,845	4.4%	923	3.6%P	745P	D-Twinkle-Hill Opie Rita-TW	Watertown WI
		351	23,833	4.5%	1,070	3.6%P	862P		
*2078	Gin-Val WM T Snickers	01/19/2015		S-Sunnyisle Titanium-ET	Johnathon A Clark				
	02-02	305	18,790	3.8%	717	3.2%P	597P	D-Old Mill TR Snick Three-ET	Cornish NH
2079	Kruses Medallion Sandy	12/28/2014		S-VB HP Brookings Medallion	Fairdale Farm and Buckmeadow Farm				
	02-02	305	24,924	4.8%	1,203	3.5%P	879P	D-Kruses Trooper Shelby	Owenton KY
*2080	IE Siegerts Braiden Farley	12/18/2014		S-Blessing Tex Braiden-ET	Addison Goldenberg and Makayla Osinga				
	02-02	305	14,929	4.1%	599	3.5%P	527P	D-ID Siegerts Agenda Fairlee	McGregor TX
		365	16,820	4.1%	694	3.5%P	592P		
2081	Voelkers Win Magnum	12/12/2014	B&O	S-Jobo CP Winner-ET	Suzanne Voelker				
	02-01	305	17,510	4.2%	729	3.5%P	615P	D-Voelkers Motown Magdale	Perryville MO
		326	18,452	4.2%	782	3.5%P	653P		
2082	IE Shanks Jag Rightroony 141	12/09/2014	B&O	S-Hilltop Acres BK Jaguar	Philip Shanks				
	02-06	283	17,615	3.9%	682	3.4%P	596P	D-ID SDF Rummie 7328	Harvard IL
*2083	Blessing Mort Osborn Penny	12/06/2014		S-Voelkers Wndt Chilli Pepper	Ally Jones and Madelyn Topp				
	02-05	220	9,755	4.2%	408	3.5%P	338P	D-Iroquois Acres B Pretti-ET	Glasgow KY
2084	Lorreda SS Bloom Panda	11/24/2014		S-Lime Rock Seaside Bloom	Fairdale Farm LLC				
	01-10	305	15,406	4.0%	622	3.2%P	497P	D-Lorreda Catino Polaris	Owenton KY
2085	Cuting Edge CP Margo-ET	10/07/2014		S-Voelkers Wndt Chili Pepper	Allan Brisson				
				D-Old Mill Snickpack Mercy	Vergennes VT				
2086	Shen Val Supreme Satin-ET	09/30/2014		S-Old Mill WDE Supreme-ET	Ken Main and Peter Vail				
	02-09	305	19,117	4.0%	764	3.4%P	647P	D-Siegerts Jetway Sable-ET	Copake NY
2087	RADical Showring Ready-ETV	09/18/2014	B&O	S-Blessing Mort Garbro Gib-ET	Lindsey Rucks				
	02-07	305	24,115	4.2%	1,023	3.5%P	840P	D-Kulp-Terra TA Showgirl-ET	Okeechobee FL
		365	29,217	4.3%	1,255	3.5%P	1,021P		
2088	KE Fala Tip Up Fallon	09/11/2014		S-Holyland Tip Up-ET	Goldfawn Farm				
	03-08	78	5,603	3.6%	201	3.3%P	183P	D-CIE KE Faith Mardi Fala	Darlington WI
2089	Blessing Gib Neva	09/05/2014	B&O	S-Blessing Mort Garbro Gib-ET	Blessing Farms				
	01-09	305	19,128	5.2%	991	3.5%P	675P	D-Blessing Aaron Nann	Fort Wayne IN
		365	22,241	5.2%	1,147	3.6%P	793P		
*2090	Bo Joy Bonanza Geena	09/04/2014		S-Mort Legacy Bonanza	Skyler Reichard				
	02-00	305	19,307	4.0%	754	3.2%P	615P	D-Bo Joy Ensign Miss Gee-ET	Walkersville MD

*2091	Latimore Tanbark Tanzy	09/03/2014	S-Pit-Crew Wonder Tankbark-ET	Zachary Logan
	02-03 262 17,713 3.3% 588 3.1%P 543P		D-Latimore G Me Too-ET	Farmdale OH
2092	Crystal Ball Bo Cookie	09/01/2014 B&O	S-Jobo Wonder Bosephus-ET	Lance & Jolene Nelson
	02-07 305 12,742 4.5% 577 3.4%P 435P		D-Cie Teddy-Bear Agenda Cupcake	Grove City MN
Class	334 Intermediate Champion Female of the Junior Show			
	Award presented by Dave Badula, Cassville, WI			
	Champion Banner presented by Purebred Publishing - Brown Swiss Bulletin, Columbus, OH			
	Rosette presented by Second Look Holsteins, LLC, the Hodorff Family, Eden, WI			
Class	335 Reserve Intermediate Champion Female of the Junior Show			
	Award presented by Maryland Brown Swiss Association			
	Reserve Champion Banner presented by Purebred Publishing - Brown Swiss Bulletin, Columbus, OH			
	Rosette presented by Second Look Holsteins, LLC, the Hodorff Family, Eden, WI			
Class	336 Intermediate Champion Female			
	Eugene Nelson Intermediate Champion Award presented by Elite Dairy, Peter Vail and Ken Main, Copake, NY			
	Champion Banner presented by Boviteq, Madison, WI			
	Rosette presented by GenOvations, Lodi, WI			
	Intermediate Champion is presented one free ovum pick-up (OPU) courtesy of Vytelle, LLC, Hermiston, OR			
Class	337 Reserve Intermediate Champion Female			
	Award presented by Muffets Twin Acres, Jacob & Elizabeth Roedl, Edgewood, IL			
	Reserve Champion Banner presented by Boviteq, Madison, WI			
	Rosette presented by Rivendale Farms, Bulger, PA			
Class	338 Four-Year-Old Cow			
	Born 09/01/2013 - 08/31/2014			
	Premiums: \$200, 150, 135, 125, 115, 105, 95, 90, 85, 80, 70, 65, 60, 50, 45			
	1st Place Award presented by Blessing Farms, Steve & Stan Blessing and Families, Fort Wayne, IN			
	Bred & Owned Award presented by Elite Dairy, Peter Vail and Ken Main, Copake, NY			
	Production Award presented by Prairie Farms, Edwardsville, IL			
	Best Udder Rosette presented by Cattle Connection, Amery, WI			
	Junior Premiums: \$30, 20			
	Junior Award presented by Twinkle-Hill Farm, the Winkleman Family, Watertown, WI			
2093	Double W Thunder Geranium	08/06/2014	S-Harts Thunder	Double W Farm Dairy
	04-00 305 22,410 4.2% 939 3.8%P 844P		D-Double W Pioneer Geeo	Holyoke CO
	326 23,650 4.2% 979 3.8%P 883P			
2094	Voelkers Carter Rachel	08/03/2014 B&O	S-Voelkers TD Carter	Suzanne Voelker
	02-10 305 16,732 4.9% 824 3.8%P 631P		D-Voelkers FD Raepunzol	Perryville MO
	351 18,316 5.0% 922 3.8%P 696P			
2095	Bradner PS Special	08/02/2014	S-Top Acres Power Surge	Golden Gate Farms
	03-07 305 24,848 3.6% 705 3.3%P 650P		D-Bradner Brookings Special	Abbotsford BC
2096	Cutting Edge Fawn	07/29/2014	S-Jo-Dee Prelude Nemo-ET	Ken Main and Peter Vail
	03-04 143 10,900 4.0% 440 3.0%P 327P		D-Cutting Edge Elite Fayann	Copake NY
2097	Wright-Way Tierra Siesta	07/07/2014	S-Jo-Dee Trooper Kingpin	Lookout and Gerald Halbach
	02-05 305 15,697 4.5% 703 3.7%P 580P		D-Dry Hill Acres Treasure Tes	Canton De Hatley QC
	310 15,873 4.5% 712 3.7%P 589P			
2098	Horseshoe Hill Tanqueray	06/20/2014 B&O	S-Sunnyisle Total-ET	Joyce Uglow
	03-02 305 16,644 4.4% 736 3.5%P 581P		D-Random Luck Koors On Taps	Watertown WI

2099 A Joy Braid Crown Royal OCS	06/18/2014	B&O	S-Blessing Tex Braiden-ET	Abbie (Kuhlman) Evans
02-11 305 21,903 3.7% 816 3.2%P 710P			D-AJK CL EM Corona	Athens PA
365 25,551 3.8% 964 3.3%P 848P				
2100 High Style Coffee	06/16/2014		S-Voelkers TD Carter	John & Bonnie Ayars and Kenny & Kelly Manion
			D-Maple Glory Master Mocha OCS	Mechanicsburg OH
2101 VB HP Twilight Daisy-ET	06/16/2014	B&O	S-Cozy Nook Twilight Twin	Voegeli Farm, Inc. and Hillpoint Partners
03-01 305 23,479 4.6% 1,080 3.6%P 829P			D-KB Cutting Edge P Dawn	Monticello WI
365 28,390 4.6% 1,298 3.6%P 1,008P				
*2102 Terra Rose T Sabrina-ET	06/10/2014		S-Cutting Edge Thunder	Addison A. Goldenberg
03-01 247 16,659 3.8% 676 3.6%P 588P			D-Kulp Gen Starbuck Shana-ET	McGregor TX
2103 Coredale Whiskey Peaches	04/24/2014	B&O	S-Manis Glenn Whiskey	Amanda Thompson
			D-Shen-Val Champ Patsy	Wellsville PA
2104 VB HP Bush Minty	04/01/2014		S-Jobo Vigor Bush-ET	Jeremy & Kelsi Mayer
03-02 305 27,779 4.1% 1,143 3.4%P 946P			D-VB Total Mint-ET	Monroe WI
365 32,351 4.1% 1,323 3.4%P 1,107P				
2105 Cutting Edge B Sonny	03/12/2014	B&O	S-Mort Legacy Bonanza	Ken Main and Peter Vail
03-04 305 23,387 4.7% 1,090 3.6%P 845P			D-Cutting Edge PS Storm-ET	Copake NY
2106 Bradner Premium Whiskey	03/02/2014	B&O	S-Manis Glenn Whiskey	Golden Gate Farms
03-05 300 16,186 4.3% 697 3.7%P 600P			D-Lost Elm Pixie-ET	Abbotsford BC
*2107 Top Acres Peppy Songbird	03/01/2014		S-Voelkers Wndt Chilli Pepper	Noah Sparling
03-09 255 18,868 5.3% 1,012 3.6%P 682P			D-Old Mill TA Snickers	Troy PA
2108 Bittersweet Jackhammer Rolanda	02/02/2014	B&O	S-Bittersweet Galaxy Jackhammer	Troy Nevil
03-04 305 26,081 3.6% 946 3.5%P 909P			D-Bittersweet Legacy Rolo-ET	Juda WI
365 30,326 3.7% 1,136 3.5%P 1,060P				
2109 Jaden Carter Elegance	01/05/2014		S-Voelkers TD Carter	Kali J Schaar
04-04 144 13,525 4.1% 483 2.9%P 396P			D-Jaden Marauder Elevate	Ellsworth WI
2110 HF Cadence Aspen	12/24/2013	B&O	S-Shiloh Brookings Cadence-ET	Hendel Farms
03-02 305 22,000 4.0% 880 3.0%P 660P			D-Hf Agio Asia	Caledonia MN
*2111 Bittersweet Dr B Tizzi-ETV	12/09/2013		S-Blessing Tex Braiden-ET	Mark Brugger
03-02 305 17,924 3.5% 622 3.4%P 609P			D-Dublin-Hills Tweepers	Livingston WI
323 18,778 3.5% 657 3.4%P 639P				
*2112 Blessing Tanbark Marcel	12/09/2013		S-Pit-Crew Wonder Tankbark-ET	Landree & Dakota Fraley
			D-Blessing Bonanza Margo	Muncy PA
2113 Lakeview Pepper Ransom	11/23/2013		S-R Hart Cayenne Pepper	Ken Main and Peter Vail
03-06 305 20,573 3.7% 762 3.1%P 646P			D-Lakeview PS Reeces	Copake NY
2114 Vin Vic Ad Society	10/22/2013		S-Sunburst Brookings Admiral	Joyce Uglow
03-04 305 22,300 3.8% 839 3.4%P 756P			D-Vin Vic Jett Sorrel	Watertown WI
365 25,563 3.8% 992 3.4%P 889P				
2115 Joshry Pepper Victoria	10/10/2013		S-R Hart Cayenne Pepper	William Kelly III & Nate Goldenberg
02-00 283 14,918 4.0% 596 3.4%P 503P			D-Joshry PW Surge Vanessa	McGregor TX
2116 Hills Valley Bonanza Ruby-ET	10/09/2013	B&O	S-Mort Legacy Bonanza	Hill's Valley Farm, LLC
03-03 305 27,478 4.4% 1,218 3.3%P 912P			D-Hills Valley Perfecta Ritz	Cattaraugus NY
349 30,399 4.4% 1,351 3.4%P 1,025P				

2117	Ourway Faust Jewel					10/03/2013	S-Reidland Camelot Faust-ET	Bridget Archtenberg
	03-00	305	13,750	4.4%	605	3.6%P 494P	D-Bridgeview Jades Julia	Brooklyn WI
2118	Locin Braiden Silk					09/20/2013	S-Blessing Tex Braiden-ET	John & Bonnie Ayars and Dr. Kenny Manion
	04-02	157	17,849	3.5%	624	3.7%P 665P	D-Locin Wonderment Savannah	Mechanicsburg OH
*2119	Riedland Jaguar Viv					09/16/2013	S-Kruses Wonderment Jaguar-ET	Cole Mahlkuch
	03-10	305	19,183	4.8%	926	3.8%P 737P	D-CIE Riedland Broker Vivian	Juda WI
*2120	Riedland Faust Pastel					09/09/2013	S-Reidland Camelot Faust-ET	Levi Banowetz
	04-11	305	18,848	3.8%	772	3.5%P 659P	D-Random Luck J Pearl-ET	Charlotte IA
2121	Bittersweet Totally Sauced					09/07/2013 B&O	S-Sunnyisle Total-ET	Troy & Lindsey Nevil
	03-07	305	23,853	3.2%	759	3.4%P 819P	D-Oak Forest Vigor Saucy	Juda WI
*2122	Niermans Valor Violet					09/05/2013	S-Niermans Wonderment Valor	Anna Marie & Carter Settles
	03-08	305	29,456	4.3%	1,261	3.6%P 1,061P	D-Niermans Bravo Vinrae	Clayton IN
2123	Peach Kist Total Tango-ET					09/04/2013	S-Sunnyisle Total-ET	Lindsey Rucks
	03-06	305	29,883	4.5%	1,332	3.4%P 1,017P	D-Shen-Val Denver Tequilla-ET	Okeechobee FL
		365	35,280	4.5%	1,573	3.5%P 1,223P		
2124	Bradner Golden Trophy-ET					09/02/2013	S-Bo Joy Agenda Goldwyn	Golden Gate Farms
	03-03	90	22,580	4.1%	1,102	3.3%P 902P	D-Bradner Terrie Wonderment	Abbotsford BC
2125	Brown Heaven J Fancy-ET					09/02/2013 B&O	S-Jolahofs Polo Jongleur	Brown Heaven
	01-09	305	25,291	4.3%	1,085	3.8%P 952P	D-Brown Heaven Glenn Fantasy	Verchères QC
2126	Brothers Three TV Wisco-ETV					09/01/2013	S-Sunnyisle Total-ET	Theo Goldenberg
	03-00	305	14,934	4.3%	676	3.6%P 537P	D-Brothers Three Wisper-OCS	McGregor TX
2127	R N R Pierce Primrose					09/01/2013 B&O	S-R N R Surge Pierce	E. Renee Michalovich
	03-02	305	24,768	5.1%	1,260	3.6%P 822P	D-R N R Goldwyn Poinsetta	Lakeville OH

Class 339 Five-Year-Old Cow

Born 09/01/2012 - 08/31/2013

Premiums: \$200, 150, 135, 125, 115, 105, 95, 90, 85, 80, 70, 65, 60, 50, 45

1st Place Award presented by Royal Hill Swiss, Don Graft, Fort Wayne, IN

Bred & Owned Award presented by Maryland Brown Swiss Association

Production Award presented by Prairie Farms, Edwardsville, IL

Best Udder Rosette presented by Cattle Connection, Amery, WI

Junior Premiums: \$30, 20

Junior Award presented by Illinois Brown Swiss Association

2128	Kalos Braiden Paloma					08/20/2013 B&O	S-Blessing Tex Braiden-ET	Sara Harn
	03-01	305	21,026	4.1%	866	3.4%P 715P	D-Brothers Three Penelope	Brooklyn WI
		365	24,311	4.1%	1,010	3.4%P 833P		
*2129	Milec Glenncore Caramel-ET					06/27/2013	S-Jolahofs Glen Glenncore-ET	Taylor Bigelow
							D-Castel Prestige Clara	Willsboro NY
2130	Top Acres Peppy Wizella					06/11/2013	S-Voelkers Wndt Chilli Pepper	Ken Main and Peter Vail
	04-11	63	5,243	3.9%	206	3.0%P 841P	D-Top Acres Supreme Wizard-ET	Copake NY
2131	Cutting Edge B Stella					06/03/2013 B&O	S-Cutting Edge Thunder	Ken Main and Peter Vail
	04-01	305	22,124	4.9%	1,092	3.6%P 800P	D-Cutting Edge Jp Stacy	Copake NY

2132 New View T Chatty	04/20/2013	S-New View Wonder Trent-ET	Troy Wendorf and Rodney Bohnhoff
05-03	20 1,262 4.1% 52 3.4%P 43P	D-New View Supreme Char	Ixonia WI
	365 27,798 3.9% 1,089 3.2%P 894P		
2133 Udderconfusion Motown Maple	04/04/2013 B&O	S-Olsons Mel Zeus Motown-ET	Udder Confusion Dairy Farm
04-08	230 19,546 3.9% 762 3.3%P 645P	D-Udderconfusion TM Mahogany	Durand IL
*2134 Red Brae Faust Liberty	03/29/2013	S-Riedland Camelot Faust-ET	Calli Storms
03-03	305 19,154 5.2% 1,000 3.6%P 680P	D-Red Brae Solutions Lycon	Muscoda WI
	365 21,014 5.2% 1,073 3.6%P 740P		
2135 Double W Thunder Than	03/26/2013	S-Harts Thunder	Goldfawn, Double W and Random Luck
04-02	305 20,158 4.8% 980 3.4%P 674P	D-CIE Double W Motown Tin	Darlington WI
*2136 Mase's Manor Grandslam Love	03/15/2013 B&O	S-Top Acres Grandslam-ET	Makenna F. Mase
05-02	59 26,425 3.8% 1,001 2.8%P 752P	D-Mase's Manor Adml Lovergirl	Cochranton PA
2137 Top Acres Garbro S Wish-ET	03/13/2013	S-Old Mill WDE Supreme-ET	Larry & Jennifer Meyer
03-04	305 29,158 4.3% 1,248 3.4%P 981P	D-Round Hill Pre Wishful-ET	Chilton WI
	365 37,320 4.3% 1,594 3.4%P 1,254P		
2138 Whitland Bonza Snowdown-ET	03/06/2013 B&O	S-Mort Legacy Bonanza	Justin Whitney
		D-Blue Heaven Snoball Twin-ET	Fort Ann NY
*2139 Kulp-Gen Supreme Dawn-ET	03/03/2013	S-Old Mill WDE Supreme-ET	Madelyn Topp
05-00	114 9,487 2.6% 242 3.0%P 285P	D-Kulp Gen Dynasty Desire-ET	Wapakoneta OH
	365 20,728 3.9% 816 3.5%P 728P		
*2140 Beu Dell Precious Dee	03/02/2013	S-Precious Primetime	Trysten Chwala
04-07	305 16,810 3.7% 634 3.1%P 529P	D-Beu Dell CR Della	Jefferson WI
2141 Red Brae Spa CD Neona	01/17/2013 B&O	S-Olsons Dynasty Music CD-ET	Steven Armbruster
03-10	305 22,928 3.8% 875 3.2%P 733P	D-Red Brae Vigor Needa-TW	Muscoda WI
	365 26,729 3.9% 1,044 3.3%P 872P		
2142 Brown Heaven Thunder Betsy	01/10/2013 B&O	S-Cutting Edge Thunder	Brown Heaven
04-00	305 24,357 4.5% 1,105 3.4%P 822P	D-Brown Heaven J Butterfly	Verchères QC
*2143 Osborn Bros Dill 6820	12/15/2012	S-Cutting Edge P Dillinger-ET	Ellie Albert
04-01	305 23,104 4.1% 958 3.5%P 803P	D-ODF Jolt Penny	Keyesport IL
2144 CNJ Explorer Cognac	12/04/2012 B&O	S-Fair Hill Wonder Explorer	Silas A Jacobs
		D-CNJ Fable Chablis	Pearl City IL
*2145 Cutting Edge T Delilah	12/02/2012 B&O	S-Cutting Edge Thunder	Kyle Barton
04-06	262 16,665 4.9% 812 3.8%P 638P	D-Towpath Agenda Dancer	Copake NY
2146 Groves-Sun Total Toto-ET	12/01/2012	S-Sunnyisle Total-ET	Troy Nevil
04-08	305 25,696 3.1% 780 3.2%P 821P	D-Milk & Money Tonis Tessa	Juda WI
2147 Riedland Lebron Floral	09/16/2012	S-R N R Supreme Lebron	Blessing Farms, Rex Mort and Bob Osborn
04-00	305 26,927 4.1% 1,115 3.7%P 987P	D-Riedland Faust Flower	Fortt Wayne IN
	365 32,081 4.1% 1,328 3.7%P 1,176P		
*2148 Precious B Pretty-ET	09/01/2012	S-Mort Legacy Bonanza	Elise Regusci
04-00	305 16,330 3.0% 492 3.3%P 544P	D-Random Luck V Precious	Modesto CA

Class 340 Aged Cow, Six-Year-Old & Over Cow

Born before 09/01/2012

Premiums: \$200, 150, 135, 125, 115, 105, 90, 85, 80, 70, 50, 45

1st Place Award presented by Royal Hill Swiss, Don Graft, Fort Wayne, IN

Bred & Owned Award presented by Iowa Brown Swiss Association

Production Award presented by Prairie Farms, Edwardsville, IL

Best Udder Rosette presented by Cattle Connection, Amery, WI

Junior Premiums: \$30, 20

Junior Award presented by Ghost Hollow, Oologah, OK

2149	Gubelman Vigor Julianah ET	09/01/2012	S-Sun-Made Vigor-ET	Bradner R Farms
	05-02 284 23,054 5.9% 1,276 3.8%P 818P		D-Jolahof Agio Juliana-ET	Abbotsford BC
2150	Twinkle-Hill Carter Alexia	08/27/2012	S-Voelkers TD Carter	Blessing Farms, Rex Mort and Bob Osborn
	04-00 305 26,675 4.1% 1,084 3.5%P 940P		D-Twinkle-Hill Mojo Almanding	Fortt Wayne IN
	365 30,900 4.1% 1,253 3.5%P 1,095P			
2151	CIE Double W Grand Liscilla	08/16/2012	S-Tops Acres Grandslam-ET	Udder Confusion Dairy Farm
			D-IE Double W D List	Durand IL
2152	Beu Dell Bonanza Sadie	07/15/2012	S-Mort Legacy Bonanza	Ken Main and Peter Vail
	05-05 206 15,980 5.0% 804 3.6%P 574P		D-Kruses Four M Jason Sherry	Copake NY
2153	R N R Lebron Emily	07/03/2012 B&O	S-R N R Supreme Lebron	Ronald M. & E. Renee Michalovich
	04-11 305 23,621 4.4% 1,045 3.5%P 817P		D-Windmill Jackpot Emma-TW	Lakeville OH
*2154	Sugar Brook P Dahilia	06/29/2012	S-New View D Promotion-ET	Marley D Malkow
			D-V B Sugar Brook M Destiny	Monticello WI
2155	Voelkers Carter Cargil	06/24/2012 B&O	S-Voelkers TD Carter	Grant Voelker
	04-01 305 19,013 4.2% 796 3.5%P 666P		D-Voelkers TP Cisie	Perryville MO
	365 22,699 4.2% 950 3.6%P 811P			
2156	Bittersweet Victor Roxanne-ET	06/09/2012	S-SCF Jet Victor Twin	Ken Main and Peter Vail
	04-02 305 23,292 4.7% 1,098 3.7%P 869P		D-V B Hillpoint Beam Roxy-ET	Copake NY
	365 26,777 4.7% 1,250 3.7%P 1,004P			
2157	C & A Sweet Wonderment Ruth	03/02/2012 B&O	S-Top Acres C Wonderment-ET	Ashley Swenson
	03-09 305 26,675 3.2% 841 3.3%P 892P		D-C & A Agio Ruby	Nicollet MN
	365 30,475 3.3% 1,007 3.4%P 1,027P			
2158	La Rainbow Bfly Sunkist-ETV	12/08/2011	S-Old Mill WDE Supreme-ET	Richard Sparrow & Family
	05-00 305 31,384 3.5% 1,102 3.4%P 1,058P		D-Potluck SB Butterfly-ET	Owenton KY
*2159	Top Acres Garbro Winner-ET	12/02/2011	S-Top Acres C Wonderment-ET	Jonathan Hubbard
	05-03 305 26,157 3.7% 967 3.5%P 915P		D-Round Hill Pre Wishful-ET	Thurmont MD
2160	Whitland Trump Snowup-ET	10/12/2011 B&O	S-Sunnyisle Trump-ET	Justin Whitney
			D-Blue Heaven Snoball-ET-TW	Fort Ann NY
2161	Sun-Made HP Supreme Pixel-ET	09/16/2011	S-Old Mill WDE Supreme-ET	Voegeli Farm, Inc.
	05-07 305 28,012 5.5% 1,539 3.4%P 932P		D-Triangle Acres Post It Twin	Monticello WI
	365 32,937 5.5% 1,808 3.4%P 1,122P			
2162	SCF PK Secret Trinket	09/15/2011 B&O	S-Cutting Edge Secret-ET	Sandy Creek Farm and John & Constance Anderson
			D-Trinkets Wonderment Talley	Bridgeport TX
2163	Cutting Edge Stratus Sue	09/14/2011	S-Cutting Edge Z Stratus	Ronald R Kelm
	04-10 305 29,533 4.8% 1,430 3.8%P 1,117P		D-Cutting Edge PS Storm-ET	Markesan WI
	365 36,138 5.0% 1,810 3.8%P 1,356P			

2164	M & M Nemo Shania	09/04/2011	B&O	S-Jo-Dee Prelude Nemo-ET	M & M Swiss - Matt, Megan, Jake & Levi Stuessel
	05-04	305 26,538	3.9% 1,037	3.6%P 946P	D-M & M Jason Summer
		335 28,418	3.8% 1,092	3.5%P 1,003P	Alma Center WI
*2165	Random Luck B Tea Rose	07/07/2011	B&O	S-Mort Legacy Bonanza	Allison Thompson
	02-11	305 22,341	5.1% 1,132	3.5%P 925P	D-Random Luck Twinkle Ocs-ET
					Darlington WI
2166	Kruses GK Vengeance Tippy	12/11/2010	B&O	S-Onword Vengeance-ET	Gary & Karen Kruse & Family
	06-00	305 23,676	4.7% 1,105	3.6%P 840P	D-Siegerts Victor Tease
					Dyersville IA
2167	Daveco Vigor Flirty-ET	10/01/2010	B&O	S-Sun-Made Vigor-ET	Jillian Bonow
	07-02	240 20,300	5.5% 1,128	2.8%P 584P	D-Daveco Tex Foxy-ET
					Lewiston MN
*2168	North Lanes Ag Paisley-ET	09/07/2010		S-Blessing Banker Agenda-ET	Chelsea Skidmore
	05-10	305 23,815	4.4% 1,054	3.8%P 898P	D-North Lanes Precise Pearl
		365 27,443	4.4% 1,240	3.8%P 1,037P	Union City OH
2169	Steubers George Pheobe	04/09/2010		S-Steubers Boy George-ET	Kayla (Devore) Whipple
				D-Steubers Titan Parker	Wilton IA
2170	VB Hillpoint Mischief-ET	05/04/2007		S-Old Mill TA Starsky-ET	Trygve L. Olson
				D-VB Hillpoint Marilyn-ET	Black Earth WI
Class 341 Component Merit Class					
Born before 08/31/2013					
Lifetime production of at least 8,500 lbs. combined fat & protein, be shown in milking form and be in her third or higher lactation. Record must be met by July 1 of current show year. Official test must be provided.					
Premiums: \$200, 150, 135, 125, 115, 105, 90, 75, 65, 60					
1st Place Award and Bred & Owned Award presented by Elite Dairy, Peter Vail and Ken Main, Copake, NY					
Production Award presented by Prairie Farms, Edwardsville, IL					
Best Udder Rosette presented by Cattle Connection, Amery, WI					
Junior Premiums: \$30, 20, 15, 10					
Junior Award presented by Elite Dairy, Peter Vail and Ken Main, Copake, NY					
2171	VB HP Advantage Sugar	04/26/2012	B&O	S-Blessing Vigor Advantage-ET	Voegeli Farm, Inc. and Hillpoint Partners
	05-02	305 38,903	4.5% 1,758	3.2%P 1,253P	D-VB Hillpoint Magnitude Sugar
		325 41,615	4.5% 1,893	3.2%P 1,350P	Monticello WI
2172	Twinkle-Hill AI Starry Sky	06/23/2011	B&O	S-Twinkle-Hill Dynasty Alloy	Jeannie & Laurie Winkelman
	05-05	305 26,988	4.7% 1,273	3.6%P 963P	D-Twinkle-Hill Pront Starlust
		356 29,436	4.7% 1,397	3.6%P 1,061P	Watertown WI
2173	CIE Double W Parker Duch	09/26/2010		S-Brothers Three Parker-ET	Udder Confusion Dairy Farm
	06-02	305 29,948	3.3% 993	3.0%P 900P	D-IE Double W Juror Duchess
					Durand IL
2174	R N R Emergency Jera ET	09/02/2010	B&O	S-Olson Mel Scip Emergency	Ronald M. & E. Renee Michalovich
	06-00	305 23,007	5.6% 1,283	3.5%P 979P	D-R N R President Jewett
					Lakeville OH
*2175	Jonlee Secret Langwathby	07/02/2010		S-Cutting Edge Secret-ET	Dalton, Dillon & Breanne Freeman
	06-00	305 41,847	5.5% 2,302	3.8%P 1,570P	D-Jonlee Gking Kirkstyle
					Bremen IN
*2176	Unrast Emergency 273	12/09/2009		S-Olson Mel Scip Emergency	Madelyn Topp
	07-08	303 25,929	2.3% 590	3.4%P 872P	D-Unrast Javon 946
		365 25,682	2.3% 585	3.4%P 864P	Wapakoneta OH
*2177	Alfa Creek Parker Victory	12/01/2009		S-Brothers Three Parker-ET	Keaton & Kinley Topp
	07-08	305 24,350	5.0% 1,199	3.5%P 849P	D-North Lanes Cash Victory
					Botkins OH

2178	Old Mill Tray Gilberta-ET	09/27/2009	S-Shen-Val OMF Leg Tray-ET	Ken Main and Peter Vail
	08-05 133 11,167 5.7% 642 3.0%P 331P		D-Old Mill JP Grace-ET	Copake NY
2179	Random Luck V Precious	06/02/2008	S-Kruses Jade Vision	Random Luck, Voegeli and Riedland
	03-00 305 22,851 4.6% 1,017 3.4%P 771P		D-Random Luck KB Phoebe	Darlington WI
2180	Grassland Speedy	02/18/2008	S-Harts Elevation-TW	Topp-View
	07-03 305 24,763 4.2% 1,039 3.2%P 788P		D-Grassland Harriet	Botkins OH
	365 27,761 4.2% 1,176 3.3%P 910P			

Class 342 Best Three Females

Group to consist of any three females. At least one must have freshened, the other two any age, all bred by exhibitor, and at least one owned by exhibitor. Partnership bred animals, outside the family, may not be included in this class. Each exhibitor is limited to one entry.

Premiums: \$100, 85, 70, 60, 45

Norman E. & Marion Magnussen Memorial Best Three Females Award presented by Norman E. Magnussen Family, Lake Mills, WI

2181 Armbruster Bros Farms Inc
Muscodia WI

2182 Brown Heaven
Verchères QC

2183 Dayne Voelker
Perryville MO

2184 Golden Gate Farms
Abbotsford BC

2185 Hill's Valley Farm, LLC
Cattaraugus NY

2186 Kayla (Devore) Whipple
Wilton IA

2187 Ken Main and Peter Vail
Copake NY

2188 Ken Main and Peter Vail
Copake NY

2189 Laurie A. Winkelman
Watertown WI

2190 Lindsey Rucks
Okeechobee FL

2191 Nick Uglow
Watertown WI

2192 Rick Kruse
Earville IA

2193 RNR Swiss
Lakeville OH

2194 Voegeli Farm, Inc. and Hillpoint Partners
Monticello WI

Class 343 Produce of Dam

Group to consist of two animals, any age, the produce of one cow which must be named. Animals need not both be owned by one exhibitor.

Premiums: \$70, 60, 50, 40, 30

1st Place Award presented by Royal Hill Swiss, Don Graft, Fort Wayne, IN

2195 Abbie (Kuhlman) Evans Athens PA	D-Ajk Cl Em Corona
2196 Brown Heaven Verchères QC	D-Brown Heaven Glenn Fantasy
2197 Hill's Valley Farm, LLC Cattaraugus NY	D-Hills Valley Perfecta Ritz
2198 Jacob B. Johns Chapel Hill TN	D-Dmf Parker Laney
2199 Just So Farm Lake Mills WI	D-Dublin-Hills Treats
2200 Justin & Ashley Kaufman Berlin PA	D-Just-In Agenda Parvel
2201 Justin Whitney Fort Ann NY	D-Blue Heaven Snoball Twin Et
2202 Kayla (Devore) Whipple Wilton IA	D-DeVores Gold Rush Piper
2203 Kayla (Devore) Whipple Wilton IA	D-Steubers George Pheobe
2204 Ken Main and Peter Vail Copake NY	D-Cutting Edge T Trudy
2205 Ken Main and Peter Vail Copake NY	D-Dublin-Hills Treats
2206 Larry & Jennifer Meyer Chilton WI	D-Top Acres Garbro S Wish Et
2207 Laurie A. Winkelman Watertown WI	D-Twinkle-Hill King Starbucks
2208 Laurie A. Winkelman Watertown WI	D-Dublin Hills Treats
2209 Lindsey Rucks Okeechobee FL	D-Top Acres Supreme Wizard ET
2210 Lindsey Rucks Okeechobee FL	D-Kulp-Terra TA Showgirl ET
2211 Marley D Malkow Monticello WI	D-Sugar Brook P Dahilia
2212 Michala Kuhlman Athens PA	D-Kuhlkows Lebron Shakira

2213	Nicholas Love Scottsdale PA	D-Cutting Edge C Kitty
2214	Nick Uglow Watertown WI	D-Random Luck Koors On Taps
2215	Random Luck, Voegeli and Riedland Darlington WI	D-Random Luck V Precious
2216	Rick Kruse Earlville IA	D-Kruses Victor Jiterbug-ET
2217	Steven D. Watts Killbuck OH	D-Top Acres Braiden Winzit-ET
2218	Voegeli Farm, Inc. and Hillpoint Partners Monticello WI	D-Sun-Made Whiskey Tea

Class 344 Total Performance Winner

1st Place Award presented by Royal Hill Swiss, Don Graft, Fort Wayne, IN

Class 345 Nasco International Type & Production Award

Award presented by Nasco, Fort Atkinson, WI

Class 348 Senior Champion Female of the Junior Show

Award presented by Dave Badula, Cassville, WI

Champion Banner presented by GenOvations, Lodi, WI

Rosette presented by Second Look Holsteins, LLC, the Hodorff Family, Eden, WI

Class 349 Reserve Senior Champion Female of the Junior Show

Award presented by Elite Dairy, Peter Vail and Ken Main, Copake, NY

Reserve Champion Banner presented by GenOvations, Lodi, WI

Rosette presented by Second Look Holsteins, LLC, the Hodorff Family, Eden, WI

Class 350 Grand Champion Female of the Junior Show

Lillian & Keith King and Jim King Grand Champion of the Junior Show Award presented by Kingsdale Farms, Victoria, IL

\$500 Udder Comfort Grand Champion Award presented by Udder Comfort International, Inc., Williamsburg, ON, Canada

Grand Champion Trophy presented by World Dairy Expo, Inc.

Champion Banner presented by Select Sires, Inc., Plain City, OH

Rosette presented by Second Look Holsteins, LLC, the Hodorff Family, Eden, WI

The Howard Voegeli Award presented by the Family of Howard Voegeli

The Sally Paaske Award presented by the Paaske Family

Class 351 Reserve Grand Champion Female of the Junior Show

Award presented by Carol's Original WorkS (COWS), Amboy, MN

Lillian & Keith King and Jim King Reserve Grand Champion of the Junior Show Award presented by Kingsdale Farms, Victoria, IL

Reserve Champion Banner presented by Select Sires, Inc., Plain City, OH

Rosette presented by Second Look Holsteins, LLC, the Hodorff Family, Eden, WI

The Howard Voegeli Award presented by the Family of Howard Voegeli

Class 366 Senior Champion Female

James Crowley Sr., Senior Champion Award presented by Maryland Brown Swiss Association

Champion Banner and Rosette presented by GenOvations, Lodi, WI

Class 367 Reserve Senior Champion Female

Award presented by Kruses Swiss Farm, Larry & Judy Kruse and Family, Earlville, IA

Reserve Champion Banner presented by GenOvations, Lodi, WI

Rosette presented by Rivendale Farms, Bulger, PA

Class 368 Grand Champion Female

Allen Hetts Grand Champion Trophy presented by World Dairy Expo, Inc.
 \$1,000 Udder Comfort Grand Champion Award presented by Udder Comfort International, Inc., Williamsburg, ON, Canada
 Champion Banner presented by Select Sires, Inc., Plain City, OH
 Rosette presented by GenOvations, Lodi, WI
 Vid Vye Memorial Trophy presented by Brown Swiss Cattle Breeders Association
 Swiss Bell presented by Brown Swiss Association of Switzerland

Class 369 Reserve Grand Champion Female

Award presented by Wisconsin Brown Swiss Association, Inc.
 Reserve Champion Banner presented by Select Sires, Inc., Plain City, OH
 Rosette presented by Rivendale Farms, Bulger, PA

Class 390 State Herd (This is not a lead out class.)

State Herd Banner and Individual Banners presented by Masters Choice Hybrids, Anna, IL
 Fred S. Idtse Recognition Award - The State Herd winner at each National Show will be recognized by having its name placed on a plaque located at the National Office.

Class 391 Premier Breeder

Royal Banner presented by WeCover Structures Inc., Thamesville, ON, Canada
 Ira Inman Award - Awarded annually to the Premier Breeder at each National Brown Swiss Show. A replica of the original trophy, which is kept at the National Office, is given to each winner.

Class 392 Premier Exhibitor

Royal Banner presented by Select Sires, Inc., Plain City, OH

Class 393 Premier Sire

Award presented in memory of Ted Krueger by National Dairy Shrine, Fort Atkinson, WI

List of Exhibitors - Brown Swiss

id	Name(s)	Farm Name	Address	City	State	Zip
6309	Morgan Wingert of 7-Ayr-S Farms	7-Ayr-S Farms	31195 Cty 44	Harmony	MN	55939
8577	Elizabeth Howman	Acacia Swiss	10333 Martin Rd.	West Salem	OH	44287
9513	Mark Hornbostel	Alba Genetics	1054 Co Rd 1900 N	West Salem	IL	62476
9580	Fred Mathys and Donna Harp	Aldee	Box 127	Brandon	MB	R7A5Y1
9233	Allan Brisson	Allandra Farm	1535 Monkton Road	Vergennes	VT	05491
6005	Justin & Ashley Kaufman	All-Glo Farms	1683 Wills Church Road	Berlin	PA	15530
828	Amy Schultz	Alpine Echo	1984 Hickory Grove Road	Dakota	IL	61018
2865	Arethusia Farm LLC	Arethusia Farm LLC	P.O. Box 1143	Litchfield	CT	06759
9041	Armbruster Bros. Farm, Inc.	Armbruster Bros. Farm, Inc	20280 Hwy 60	Muscoda	WI	53573
1352	Olivia Love	Autumn Creek Farm	156 Creek Road	Scottsdale	PA	15683
1354	Nicholas Love	Autumn Creek Farm	156 Creek Road	Scottsdale	PA	15683
8362	Alyssa Grocott	Autumn Moon Dairy	186 Parker Hill Rd	Edmeston	NY	13335
2933	Shawn & Levi Banowetz	Banowetz Dairy Farm	1276 320 Ave	Charlotte	IA	52731
9036	L: Jacob Harbaugh O: Ken Main & Peter Vail	Bella-View Holsteins	N11912 Graetz Rd.	Marion	WI	54950
1357	Troy & Lindsey Nevil	Bittersweet Farm	N2256 Bagley Road	Juda	WI	53550
1707	Troy Nevil	Bittersweet Farm	N2256 Bagley Rd	Juda	WI	53550
8800	Hayleigh Geurink and Kelvin Webster	Black-Tie Genetics	3944 Tallman Creek Dr Nw	Grand Rapids	MI	49534-8438
2007	Blessing Farms	Blessing Farms	9534 Arcola Road	Fort Wayne	IN	46818
9045	Blessing Farms	Blessing Farms	9534 Arcola Rd	Ft Wayne	IN	46818
9128	Blue Royal Dairy LLC	Blue Royal Dairy LLC	1329 Menchalville Road	Reedsville	WI	54230
3455	Bill & Lynn Vanderham	Blue Skies Swiss and Holsteins	1235 Henry Lee St.	Hillsboro	IA	52630
1086	Delbert & Heather Yoder	Brook Hollow Farm	8820 Camp Rd	West Salem	OH	44287
5752	Brothers Three Brown Swiss	Brothers Three	W330 S5245 Meadowlark Lane	North Prairie	WI	53153
3140	Brown Heaven	Brown Heaven Farm	490 Bas Terres Noires	Verchères	QC	J0L2R0
3056	Carrie Rhoades	Buckeye Knoll Farm	5554 Bakers Store	Greenville	OH	45331
5814	Ashley Swenson	C & A Swiss	45672 380th Street	Nicollet	MN	56074
9850	Hunter Glass	Cal-Ticino Brown Swiss	1843 North Hart Rd	Modesto	CA	95358
9856	Eden Groff	Cherry Crest Farm	166 Cherry Hill Rd	Ronks	PA	17572
2134	Gregg Christianson	Christianson Dairy	W1315 Two Creek Road	Bonduel	WI	54107
9287	Gerald & Emily Chwala	Chwala-T Acres	N5114 Dewey Rd	Jefferson	WI	53549
7206	James L. Thompson	Cliff-Brook Farm	4963 Sargent Rd	South Wayne	WI	53587
4439	Amanda Thompson	Coredale Farms	9080 Carlisle Rd	Wellsville	PA	17365
5899	Troy Wendorf and Rodney Bohnhoff	CorexentEdge	W2354 Evergreen Road	Ixonia	WI	53036
9371	Lance & Jolene Nelson	Crystal Ball	53875 210th Street	Grove City	MN	56243
9724	Taylor Bigelow	Dale-Lea Stock Farm	149 Coonrod Road	Willsboro	NY	12296
4442	Jillian Bonow	Daveco Swiss	22625 Rupprechts Valley Rd	Lewiston	MN	55952
9859	Ladd E. Hanselman	Del-Rose Farm	9635 Cty Hwy 18	Bloomville	NY	13739
7148	Kayla (Devore) Whipple	Devores Dairy	2955 120th St	Wilton	IA	52778
3959	Jeffrey McKissick	Dochaven Swiss	260 Heckathorne Rd.	New Castle	PA	16101
7891	Double W Farm Dairy	Double W Farm Dairy	416 S Campbell Ave	Holyoke	CO	80734
9687	Kiele Eberling	Eberling Dairy	258 Pole Line Rd	Postville	IA	52162
9476	Sean Shults	Edsall Hill/ Heiview	367 Parsons Rd	Sharon Springs	NY	13459
9048	Kyle Barton	Elite Dairy	646 Rooche Lane	Ancramdale	NY	12503
4220	Ken Main and Peter Vail	Elite Dairy	PO Box 193	Copake	NY	12516
9046	Ken Main and Peter Vail	Elite Dairy	Po Box 193	Copake	NY	12516
982	Ken Main and Peter Vail	Elite Dairy	PO Box 193	Copake	NY	12516
4974	Fairdale Farm LLC	Fairdale Farm LLC	P.O. Box 432	Owenton	KY	40359
9063	Fairdale Farm LLC	Fairdale Farm LLC	Po Box 432	Owenton	KY	40359
9071	Ferme Intense, Alexandre Beauchemin and Ferme Pierre Boulet	Ferme Intense	480 Rang St-David	Ste-Brigitte Des Saults	QC	J0C 1E0
7855	Pierre Boulet and Yvon Sicard	Ferme Sicy	241 Rue Gagné	St-Justin	QC	J0K 2V0
9534	Ferme Vannod	Ferme Vannod	160 Rang Du 5	St-Louis De Gonzague	QC	j0s1t0
9050	Galen Fick	Fick Swiss	2817 Jackson Ave	Boyden	IA	51234
9643	Five Star Dairy	Five Star Dairy	E9817 590th Ave	Elk mound	WI	54739
822	Megan Hill	Four-Hills Farm	722 Burpee Rd	Bristol	VT	05443
9139	Frosted Beauty Swiss	Frosted Beauty Swiss	23334 Kidder Rd	Epworth	IA	52045
5575	Kendall Willingham	Fudge's Dairy	163 Fudge Road	Gamaliel	KY	42140
5254	Glamourview-lager & Walton	Glamourview-lager & Walton	9847 Woodsboro Pike	Walkersville	MD	21793
7954	Becky Brown	Glenmar-Dale	3704 Willow Rd	Stitzer	WI	53825
1533	Greg & Marcia Clark	GMC Farm	PO Box 34	Cornish Flat	NH	03746
6242	Golden Gate Farms	Golden Gate Farms	28670 58th Ave	Abbotsford	BC	v4x2e8
6655	Carol Regusci and Louie Oliveria	Golden State Swiss	5425 Stoddard Road	Modesto	CA	95356
2381	Goldfawn Farm	Goldfawn Farm	2714 Val Verde Rd.	McGregor	TX	76657
9790	Lucas H. Baker	Grand Veue Farm	155 Bowie Hill Road	Hoosick Falls	NY	12090
8439	Hager Hill Holsteins and Swiss	Hager Hill Holsteins and Swiss	N3857 Us Highway 63	Ellsworth	WI	54011
9267	Bethany Hartman	Hartmanhills	10295 Day Road	Marshfield	WI	54449
9596	Ellie Albert	Harvest Breeze Farm	1590 Hookdale Ave.	Keyesport	IL	62253
3135	Ronald & Emily Heffner	Heff Haven Holsteins	10943 Mapleville Rd	Hagerstown	MD	21742
8448	Hendel Farms	Hendel Farms	14306 Gap Drive	Caledonia	MN	55921
1184	Hill's Valley Farm, LLC	Hill's Valley Farm, LLC	11144 Mosher Hollow Road	Cattaraugus	NY	14719
1186	Dennis Mashek	Hilltop Acres Farm	1701 253rd Ave	Calmar	IA	52132
1187	Tanner Mashek	Hilltop Acres Farm	1701 253rd Ave	Calmar	IA	52132
8522	Cal Anderson	Horseshoe Hill	W7804 N. Shore Rd	Fort Atkinson	WI	53538
2943	Nick Uglow	Horseshoehill Swiss	W4932 Horseshoe Rd.	Watertown	WI	53094
7152	Rose Morian	Indelible Brown Swiss	5821 Horne Rd	Atlantic	PA	16111
3665	Hayden Hauschildt	Jaden Swiss	W5897, 410 Ave	Ellsworth	WI	54011
4517	Spencer Clark	JC Swiss	W3507 County Road M	Lacrosse	WI	54601
7878	Ashlee Garbers and Spencer Clark	JC Swiss	W3507 County Road M	La Crosse	WI	54601
3928	Summer Henschel	Jenlar Holsteins & Brown Swiss	N1856 S Washington Rd.	Chilton	WI	53014
786	Larry & Jennifer Meyer	Jenlar Holsteins & Brown Swiss	W2711 Killsnake Rd.	Chilton	WI	53014
4664	Brianna Meyer	Jenlar Holsteins & Brown Swiss	W2711 Killsnake Rd.	Chilton	WI	53014
6714	Austin Meyer	Jenlar Holsteins & Brown Swiss	W2711 Killsnake Rd.	Chilton	WI	53014
9057	Just So Farm	Just So Farm	W 7997 Hope Lake Rd	Lake Mills	WI	53551
3595	Just So Farm	Just So Farm	W7997 Hope Lake Rd	Lake Mills	WI	53551

List of Exhibitors - Brown Swiss

id	Name(s)	Farm Name	Address	City	State	Zip
9311	Kaleb, Cole & Carter Kruse	Kcck Genetics	1507 300th Ave	Dyersville	IA	52040
9314	Carter Kruse	Kcck Genetics	1507 300th Ave	Dyersville	IA	52040
5924	Mckenzie Pedigo	Kinslow Dairy	10600 Old Bowling Green Rd	Smiths Grove	KY	42171
8107	Landen Knapp	Knapp Guernseys	22257 Pilot Grove Rd	Epworth	IA	52045
9477	Becky Allen	Korncrest	1106 E 1400 N	Terreton	ID	83450
250	Rick Kruse	Kruse's Swiss Farm	2938 140th St	Earlville	IA	52041
9059	David & Anne Kulp and Dan & Laura Chard	Kulp-Terra	938 Power Rd	Manheim	PA	17545
6870	Jacob B. Johns	Lazy J Farm	5413 Tennessee Central Rd	Chapel Hill	TN	37034
9060	Joe & Mark Loehr	Loehr Dairy LLC	N 6224 Banner Rd	Mt Calvary	WI	53057
9863	Zachary Logan	Logan Acres	9506 State Roue 193	Farmdale	OH	44417
4210	Emily Kipp	Lone Acres Farm	S54W32290 Hwy ZZ	North Prairie	WI	53153
8168	Ryland & Brayton Nierman	Long Lane Farm	1939 East 300 South	Brownstown	IN	47220
4784	Lookout and Gerald Halbach	Lookout Holsteins And Jerseys	35 Minton Hill Rd	Canton De Hatley	QC	JOB 2C0
8047	Matthew Pacheco	Lookout Holsteins and Jerseys	35 Minton Hill Rd	Canton De Hatley	QC	JOB 2C0
3403	M & M Swiss - Matt, Megan, Jake & Levi Stuessel	M & M Swiss	N9202 North Pole Grove Road	Alma Center	WI	54611
9273	L: Jaxon Boe O: M & M Swiss-M, M, J & L Stuessel	M & M Swiss	N9202 North Pole Grove Road	Alma Center	WI	54611
9317	Paul & Cynthia Magnussen	Magnussen Farms	W5466 Curtis Mill Road	Fort Atkinson	WI	53538
8908	Makenna F. Mase	Mase's Manor	29494 Lake Creek Rd.	Cochranon	PA	16314
6846	Jeremy & Kelsi Mayer	Mayer Homestead Farm	N3926 Cty. N	Monroe	WI	53566
8340	Mitch Kappelman	Meadow Brook Farms	5527 Old County Rd. Q	Manitowoc	WI	54220
9176	Emma Brennan	Merringle	S107w22805 River Avenue	Big Bend	WI	53103
8931	Kevin Frye	Miami Hills Farm	9235 East Co Rd 50 North	Logansport	IN	46947
9791	Mark & Bryanne Brugger	Morning Dew Swiss	1855 County Road Xx	Livingston	WI	53554
1324	Beth Nelson	Nelson Farms	N31999 Schansberg Rd	Blair	WI	54616
5059	John & Bonnie Ayars and Dr. Kenny Manion	New View Swiss	12108 Rosedale Rd	Mechanicsburg	OH	43044
9877	New View Swiss	New View Swiss	4381 Rosedale Rd	Mechanicsburg	OH	43044
7594	Chad & Doug Nolan	Nolandale Farm	24514 S. West St	Lexington	IL	61753
7840	Dalton, Dillon & Breanne Freeman	Nor-Bert Farms, LLC	7220 State Road 106	Bremen	IN	46506
9055	Dalton, Dillon & Breanne Freeman	Nor-Bert Farms, Ltd	7220 St Rd 106	Bremen	IN	46506
1548	Chelsea Skidmore	North Lane Farm	465 Union City-Elroy Rd.	Union City	OH	45390
1870	Oak Knoll Farm	Oak Knoll Farm	2100 Jones Rd.	Dodgeville	WI	53533
1090	Trygve L. Olson	Olson's Brown Swiss Dairy	10113 USH 14 West	Black Earth	WI	53515
9189	Robbie Watson	On The Go	W7749 Ames Road	Darlington	WI	53530
9065	L: Brylie Volker, O: Dennis L. Worden	Onword Swiss	17195 45th St	Oelwein	IA	50662
9645	Steven D. Watts	Open-Road Farm	120 Tr26	Killbuck	OH	44637
258	Ourway Holsteins	Ourway Holsteins	W2303 Alpine Rd	Brooklyn	WI	53521
3157	Matthew Pacheco	Pacheco Dairy, Inc.	19950 W. Belmont Ave.	Kerman	CA	93630
9154	Matt Steiner	Pine Tree Dairy	8586 Benner Rd	Marshallville	OH	44645
9690	Pit-Crew Genetics	Pit-Crew Genetics	1429 313th Ave	Cambridge	MN	55008
1691	Pit-Crew Genetics	Pit-Crew Genetics	1429 313th Ave NW	Cambridge	MN	55008
9847	L: Abby Foss O: Pit-Crew Genetics	Pit-Crew Genetics	1429 313th Ave Nw	Cambridge	MN	55008
9061	Thomas & Mark Portner	Port Haven Dairy	29042 240th St	Sleepy Eye	MN	56085
1947	Ronald R Kelm	Power Line Swiss	N1907 Cty Rd I	Markesan	WI	53946
6423	Joshua & Larry Geiwitz	Prime Time Swiss	963 Coopertown Rd	Volant	PA	16156
5763	Suton Paulson	Pv Boarding	W5816 Hwy 60	Arlington	WI	53911
3453	Heidi Roulet, Allyn Paulson and Tammy Voegeli	Pv Boarding	W5816 Hwy 60	Arlington	WI	53911
8459	Tammy Voegeli and Louie Oliviera	Pv Boarding	W5816 Hwy 60	Arlington	WI	53911
9144	Ronald M. & E. Renee Michalovich	R N R Swiss	6124 State Route 514	Lakeville	OH	44638
9240	Lindsey Rucks and Jenna Hoffman	Radical Genetics	5818 Us Hwy 98 North	Okeechobee	FL	34972
3017	Lindsey Rucks	RAD-ical Genetics	P.o. Box 415	Okeechobee	FL	34973
8115	Goldfawn Farm	Random Luck	7749 Ames Rd	Darlington	WI	53530
6882	Goldfawn, Double W and Random Luck	Random Luck	7749 Ames Rd	Darlington	WI	53530
6891	Allison Thompson	Random Luck	7749 Ames Rd	Darlington	WI	53530
6893	Random Luck, Voegeli and Riedland	Random Luck	7749 Ames Rd	Darlington	WI	53530
8100	Goldfawn, Wittspride and Random Luck Farm	Random Luck	7749 Ames Rd	Darlington	WI	53530
9251	Allison Thompson	Random Luck Farm	7749 Ames Road	Darlington	WI	53530
9372	Armbruster Bros Farms Inc	Red Brae Dairy	20280 Hwy 60	Muscoda	WI	53573
3392	Brilee Tucker, Hadleigh, Ezra & Kenna Tate Jones	Ridgeline Genetics	1155 Ed Turner Rd	Edmonton	KY	42129
2247	RNR Swiss	RNR Swiss	6124 SR 514	Lakeville	OH	44638
9491	Elijah Landgraf	Robland Swiss	656 County Road 542	Jackson	MO	63755
9493	Robert Landgraf	Robland Swiss	656 County Road 542	Jackson	MO	63755
9341	Don Graft	Rosedale	3066 Cty Rd G	Oxford	WI	53952
9586	Karen Bejster	Royal Divide	31745 1800 North Ave	Spring Valley	IL	61362
9568	Jon & Alexis Retzlaff	R-Plaine Swiss	N3480 Grass Lake Road	Belle Plaine	WI	54166
9279	Sandy Creek Farm	Sandy Creek Farm	1674 Cuba Rd	Bridgeport	TX	76426
785	Philip Shanks	Shanks Farm	25303 Stateline Rd	Harvard	IL	60033
9577	Brooke J Soffer	Silhouette Genetics	7563 Lamont Road	Portageville	NY	14536
3184	Shelby Biasini	Silver Top Swiss	730 Bliss Hill Road	Morrisville	VT	05661
9671	Noah Sparling	Sparling Trio	8399 Route 6	Troy	PA	16947
9713	Bruce Jenks	Spinnaker Swiss	102 Mill Valley Road	Hadley	MA	01035
9881	Chandra Stanley	Stanley Farms	1133 Stanley Road	Ensbury	VT	05450
5587	Leslie & Linda Bruchey	Stylin' Genetics	400 Stacy Lee Ct	Westminster	MD	21158
8080	Marley D Malkow	Sugar Brook Dairy	W3403 Oliver Road	Monticello	WI	53570
9006	Kaleigh Krueger	Sugar Brook Dairy Inc.	W2930 Cty Road Ee	Albany	WI	53502
8444	Nate Lemire	Sunrise Hill Swiss	3199 Danhouser Rd	Blue Mounds	WI	53517
6809	Cole Mahlkuch	Thataway Genetics	W2685 Lumberyard Rd	Juda	WI	53550
3572	Leif Thompson	Thompsview Farms	S5815 County Road NN	Viroqua	WI	54665
4237	Scott C. Partridge	Thorndale Farms	9086 Shepard Rd	Batavia	NY	14020
9062	Wayne E. Sliker	Top Acres	8409 Runkle Rd	St Paris	OH	43072
1223	Wayne E. Sliker	Top Acres	8409 Runkle Rd.	St. Paris	OH	43072
2880	Elise Regusci	Top diMark Swiss	5425 Stoddard Rd.	Modesto	CA	95356
5537	Elisabeth & Elise Regusci	Top diMark Swiss	5425 Stoddard Rd.	Modesto	CA	95356
1895	Eric Topp	Topp-View	10356 Kohler Road	Wapakoneta	OH	45895

List of Exhibitors - Brown Swiss

id	Name(s)	Farm Name	Address	City	State	Zip
6073	Keaton & Kinley Topp	Topp-View	19269 Reineke Schipper Rd	Botkins	OH	45306
9376	Madelyn Topp	Topp-View	10356 Kohler Rd	Wapakoneta	OH	45895
1761	Topp-View	Topp-View	9477 Botkins Rd.	Botkins	OH	45306
8366	Otis, Malcolm & Quincee Johnson	Trackside Swiss	16609 W. Butts Corners Road	Evansville	WI	53536
9272	Rebecca Korth	Triangle Acres	800 W Elm Rd	Freeport	IL	61032
9152	Landree & Dakota Fraley	Twin County Farm	4010 Muncy Exchange Road	Muncy	PA	17756
5151	Dakota J Fraley	Twin County Farms	4010 Muncy Exchange Road	Muncy	PA	17756
880	Laurie A. Winkelman	Twinkle-Hill Farm	N7348 Hwy P	Watertown	WI	53094
3857	Udder Confusion Dairy Farm	Udder Confusion Dairy Farm	11350 N. Winslow Road	Durand	IL	61024
9300	V-Lane Farms	V-Lane Farms	348626 E. 810 Rd, Cushing	Cushing	OK	74023
1294	Voegeli Farm, Inc.	Voegeli Farm	N7190 State Rd 69	Monticello	WI	53570
1328	Voegeli Farm, Inc. and Hillpoint Partners	Voegeli Farm	N7190 State Rd 69	Monticello	WI	53570
3239	Chris Voegeli	Voegeli Farm	N7190 State Rd 69	Monticello	WI	53570
7172	Christopher Voegeli and Hilary Damke	Voegeli Farm	N7190 State Rd 69	Monticello	WI	53570
9064	Voegeli Farm and Hillpoint Partners	Voegeli Farm, Inc & Hillpoint Partners	N7190 Hwy 39-69	Monticello	WI	53570
8914	Dayne Voelker	Voelker Swiss Farms	8229 North Highway 61	Perryville	MO	63775
4736	Tammy Voegeli and Louis & Garen Oliveira	Vogrin Swiss	W5816 Hwy 60	Arlington	WI	53911
1663	Tammy Voegeli	VoGrin Swiss	W5816 Hwy 60	Arlington	WI	53911
9455	Abby & Kaylee Fairbanks	Wapsi-Ana	8954 Forest Chapel Rd	Anamosa	IA	52202
6933	Justin Whitney	Whitland Farms	67 Whitney Road	Fort Ann	NY	12827
7108	Daniel Wonders	Won-Bell Dairy Farms	15139 Olson Ln	Mineral Point	WI	53565
9044	Arthurst Farm & Double W Dairy		3068 Hwy 12	Plato	MN	55370
8912	Dale & Deanna Bendig and Tony Moreno		199 Woodside Road	Gettysburg	PA	17325
9437	M Moffett, J & B Ayars and K Manion		5135 N Elyria Rd	West Salem	OH	44287
9398	Dalton Anderson, Karlie Rumbeck and Garrett Cast		4011 A Street Rd.	Beaver Crossing	NE	68313
9422	Morgan Cavitt		841 Jupiter Dr., Apt. 101	Madison	WI	53718
2983	Trysten Chwala		N5114 Dewey Rd.	Jefferson	WI	53549
1197	Johnathon A Clark		30 Cornish Stage Rd	Cornish	NH	03745
9228	Ferme Beauvair, Sylvain Boulanger and Christine Dulac		223 Rang 1	Lambton	QC	g0m 1h0
9280	Abbie (Kuhlman) Evans		7025 Battle Creek Rd	Athens	PA	18810
7253	Alexis Geiwitz		803 Dean Rd	New Castle	PA	16101
9206	Hayleigh Geurink, Kelvin Webster and Velmar Green		3944 Tallman Creek Nw	Grand Rapids	MI	49534
9056	Robert Gould & Kristie Kelly		Po Box 706	Hadley	MA	01035
7268	Paul Grulke		W7465 County Road Q	Watertown	WI	53098
7872	Aaliyah Gunn		508 E Church St	Orfordville	WI	53576
7615	Sarah Hagenow		N2938 Hagen Road	Poynette	WI	53955
9241	Trenton Hammerand		23334 Kidder Road	Epworth	IA	52045
9523	Ferme Hans		164 Route Mcdonald	Acton Vale	QC	j0h1a0
9693	Sara Harn		W1035 Horan Rd.	Brooklyn	WI	53521
9450	Jonathan Hubbard		8735 Ramsburg Rd	Thurmont	MD	21788
9794	Silas A Jacobs		11399 West Goldmine Rd.	Pearl City	IL	61062
8182	Caylee Nicole James		6720 E 300 S	Wolcottville	IN	46795
9426	Ally Jones and Madelyn Topp		257 Leon Nuckols Road	Glasgow	KY	42141
8377	Lila Kilsdonk		W3982 County Road Vv	Seymour	WI	54165
6717	Ross & Sue Kleingartner		6032 60th St Se	Gackle	ND	58442-9738
8089	E Kueffner, T Packard and M & L Hellenbrand		431 Potomac Street	Boonsboro	MD	21713
9281	Michala Kuhlman		7025 Battle Creek Rd	Athens	PA	18810
9374	Ryan Lawton		581 Bridge Street	Newark Valley	NY	13811
9614	P, K & R Linke and G & L Adams		714 6th Ave	Brookings	SD	57006
9516	Fred Mathys		Box 155	Wawanesa	MB	r0k 2g0
5788	Terri Packard and Cynthia Warner		431 Potomac Street	Boonsboro	MD	21713
9157	Abbie & Donald Kuhlman and Scott Partridge		9086 Shepard Rd	Batavia	NY	14020
9297	Elizabeth D Schieferstine		5454 Cooper St	Vernon	NY	13476
7946	Scott & Ashley Schugel		N6830 Kathryn Rd	Shawano	WI	54166
8622	Anna Marie & Carter Settles		671 W Cr 550 S	Clayton	IN	46118
9161	Alexis Sherry		260 Heckathorn Rd.	New Castle	PA	16101
9714	Dylan Skiff		434 Co Rt 74a	Greenwich	NY	12834
8966	Wayne E. Sliker		8409 Runkle Road	St. Paris	OH	43072
9723	Amber Heisler and Caleb Whittemore		28354 W Dr N	Springport	MI	49284
9469	Heather Yoder		8820 Camp Rd	West Salem	OH	44287



MASTERSCHOICE

SEEDCORN.COM



Come visit us at booths:
2417, 2418, 2517, 2518

Let Dairy Agenda Today help you milk your advertisement for all its worth!

**Why would you
expect to advertise
once and have your
name stay in front of
customers?**

EDITOR

Melissa Hart | 517-398-1957
farm.writer@hotmail.com | Michigan

SALES STAFF

Ron Schaap | 608-334-2348
ronschaap@hotmail.com | Wisconsin
Chad Griffith | 513-543-2315
xavier12146@yahoo.com | Ohio
Mary Angelo | 417-880-5732
angelo@1791.com | Missouri

MANAGER

David Jons | 913-634-3526
david.jons@att.net | Kansas

**More EYES
on YOUR ad
when YOUR
ad is on
DAIRY AGENDA
TODAY!**

Visit www.dairyagendatoday.com





SAVE time money water



Ritchie water is smart water.

Provide fresh water for your animals, and have more left for other things in your life. See what owning a Ritchie automatic waterer can do for you at www.ritchiefount.com.

Partner to the American Dairyman since 1921.

Ritchie[®]
Fresh Water
For Life™

Visit Ritchie in booth EH 1405-1407

MADE IN
AMERICA
SINCE 1921



Remember when “MADE IN AMERICA” meant something? It still does

Always ask for Y-TEX® All-American® ear tags for American quality at its very best. Our All-American® tags feature an advanced polyurethane formulation for greater flexibility and durability. A long, ribbed neck to prevent breakage and allow for greater tag visibility. A flexible male button and proven Snap-Lok® collar to prevent snagging and tag-button separation. And a longer shaft to enhance air circulation around the incision site for faster healing.

So when it's time to tag your cattle, ask your retailer for the brand made with pride right here in the USA. To learn more, visit www.ytex.com or call (888) 600-YTEX.

COME BY AND VISIT
US AT THE
WORLD DAIRY EXPO
BOOTH EH4014 &
EH4015

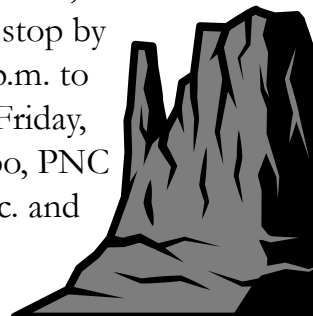


Y-TEX®, All-American® and Snap-Lok® are registered trademarks of Y-TEX Corporation.
© 2017 Y-TEX Corporation.

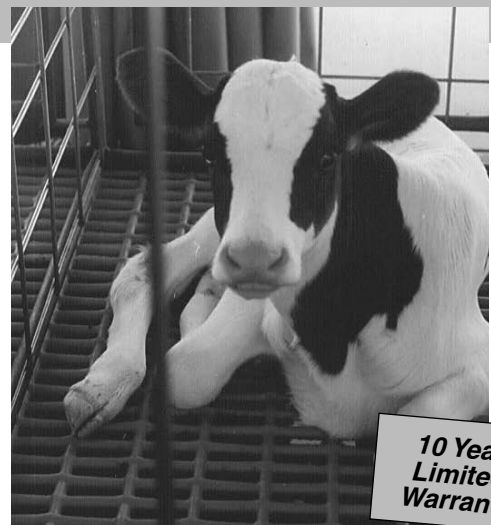
WELCOME TO THE TANBARK!

Expo's exclusive bar and grill, located on the east end of the Sale Pavilion. Full bar service from 11 a.m. to close; lunch served from 11 a.m. until 3 p.m.

A casual meeting place for attendees and exhibitors to conduct business, socialize and enjoy ExpoTV. Be sure to stop by for Happy Hour from 4 p.m. to 6 p.m., Monday through Friday, hosted by World Dairy Expo, PNC Bank, Turner Inc. and Zoetis.



Tenderfoot® Calf Flooring Systems



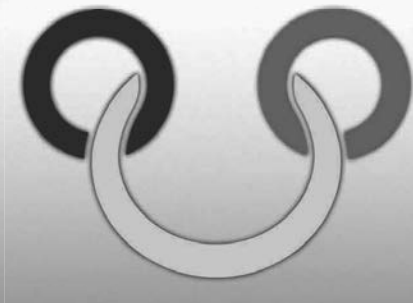
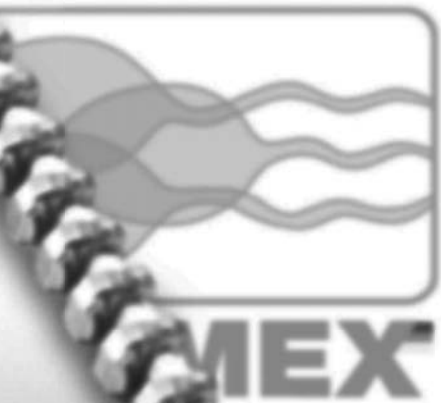
10 Year
Limited
Warranty

- Less Labor
- Healthier Environment
- Self-Cleaning Design
- Proven Durability



Tandem Products, Inc.
3444 Dight Ave S, Mpls, MN 55406

1-800-533-0509



GGI-SPERMEX
Genetics made in Germany

GGI+SPERMEX have joined forces

A genetic potential second to none!

GGI-SPERMEX is your source for bovine genetics, resulting from modern and efficient German breeding programs for the benefit of your herd. Make use of the entire width of cattle breeding "Made in Germany" for a successful future.

Visit our homepage at: www.ggi-spermex.de

Angler



Red Holstein



Holstein



Fleckvieh



Brown Swiss



Visit us at booth #140 at the Coliseum!

Ag-Link International Inc.
78 Baker Road
Tunkhannock PA 18657
Phone +1-570-836-6593
Mobile +1-570-840-8185
Email: aglinkspablo@gmail.com
Internet: www.ag-link.com/ggi/



Global Genetic Resources.
517 Main Street
Downing WI 54734
Phone +1-715-866-790-BULL (2855)
Email: globalgeneticresources@yahoo.com
Internet: <https://ggresources.com/>

Extrutech FORM Wall System
**Wall and Ceiling
 Liner Panels**

NEW PRODUCTS

Brighten Your Dairy Walls
 with Panels from
**EXTRUTECH
 PLASTICS, INC.**

- Concrete Form System
- Water and corrosion-proof
- Panels will not rust, rot or flake
- Custom cut panel kits to 20 feet
- Cleans easily - low maintenance
- Brightens the interior of any building
- Fewer seams - 2 foot wide panels
- Resists mold, mildew, bacteria growth
- 6" and 8" thick stay-in-place concrete form
- Available in a bright white, high gloss, hard surface
- Low maintenance, easy-to-clean, with water/mild cleaner
- Protective film on both sides keeps panels clean during construction



Stop by our booth to learn more about our many Products: Wall & Ceiling Liner Panels, Concrete FORM Wall System, Doors, Suspended Ceiling Panels; Our New 2 1/4" Partition Panel and New Aqua-Tank Panels!



See the new FORM construction video

888-818-0118

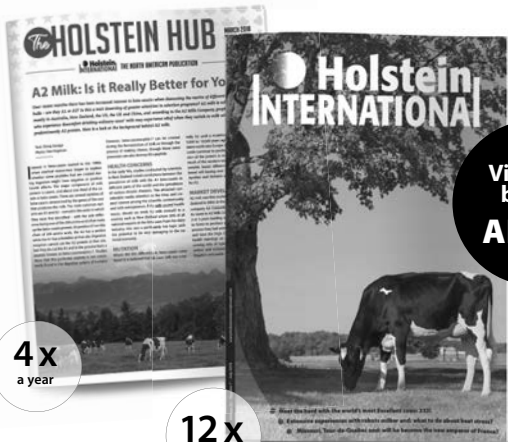
www.epioplastics.com • email: info@epioplastics.com

EXTRUTECH PLASTICS, INC.



Ask for Extrutech - Ask for the Best - The Best Surface, Shine, and Strength in the Industry!

**Holstein International
 helps you making
 the best breeding decisions**



Visit our booth
AL162

4x
 a year

12x
 a year

Your monthly source for unbiased and professional articles on Holstein bulls and cow families worldwide.

Subscribe online

WITH DISCOUNT CODE: **WDE2018**

www.holsteininternational.com

CHORE BOOT CENTRAL

FIND THE PERFECT FIT!
Try them on in Arena 414



The Quatro®
Comfort Plus

*Expandable Gusset For
 Bigger Calves!*

See the full Quatro line up at the show!

The Quatro®
EXTREME

*Rated to -60°F with the comfort
 you expect from Quatro!*



Reed® Romeo & Juliet

*Slip-on comfort now in
 Men's and Women's sizes!*

Reed® Glacier

*Gel Coosh insole cushion
 with -60°F insulation*

NOW AVAILABLE IN FULL CAMO!

DUNLOP®
 PROTECTIVE FOOTWEAR

Purofort Thermo + Full Safety

*Super long lasting safety toe
 boots and rated to -58°F*

DUNLOP®
 PROTECTIVE FOOTWEAR

Purofort +

*Dunlop durability in a
 lightweight boot that's
 perfect for warm weather*

Insulated • Non-Insulated • Safety Toe • Camo • Over Shoes

Find Your Local Dealer or Shop Online!
800-796-5333 www.ChoreBootCentral.com

Osnabrueck Holstein Genetics



SUPREM

ICO 4734



ROYCE

NVI 341



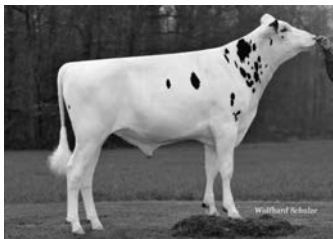
ROLLS

RZRobot 127



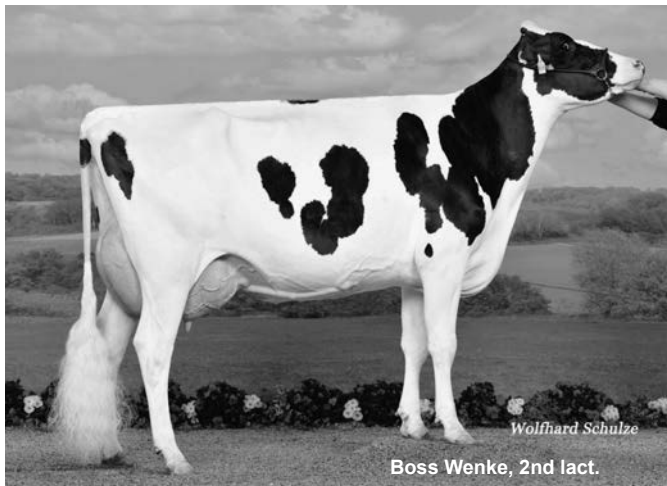
FELIX

NTM 36



KENT

+72 fat kg



JETSON

RZE 137



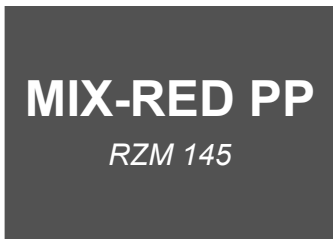
NOBEL-RED

RZFit 146



ADLON P

ISU 226



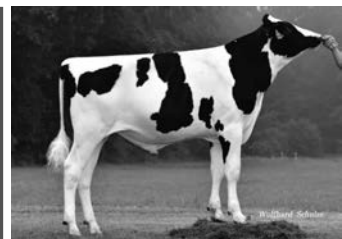
MIX-RED PP

RZM 145



HOLO PP

milking speed 121

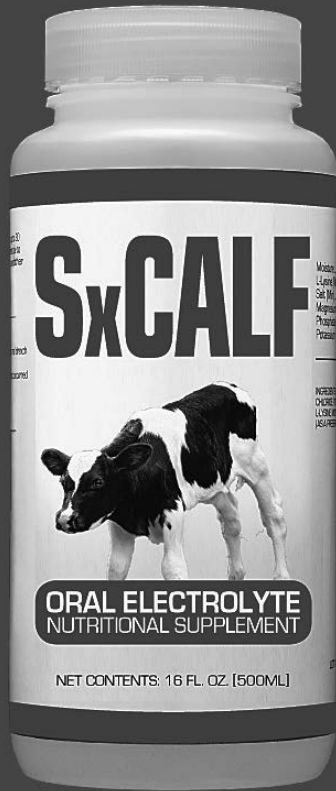


Osnabrücker Herdbuch eG
Ochsenweg 40-42
49324 Melle
Tel: +49 54 22 / 987-0
Fax: +49 54 22 / 987-100
info@ohg-genetic.de
www.ohg-genetic.de

**Breeding Center for Holsteins
in Germany**

Visit OHG booth IL312
(top floor Coliseum)

SxCALF



Oral Electrolyte Nutritional Supplement

- Rehydrates the calf and improves fecal consistency more quickly than any other product
- Requires only one oral feeding*
- Reduces mortality/morbidity up to 75% versus other products
- Saves time and labor expense
- Improves gut health
- Non-antibiotic/No VFD required

* In up to 90% of cases.

EcoPlanet Environmental, LLC

info@ecoplanetearth.com • www.ecoplanetearth.com

Contact: EcoPlanet (406) 451-9311

Agri-Sales (800) 251-1141

Visit our booth at World Dairy Expo – EH 4219



Paul WERNER INC.
Hoofcare Technology

Visit us
at Booth
Stand
TM714

Paul WERNER Inc.
17810 NW US HWY 441
High Springs, FL 32643
Phone: (386) 292 - 0708
www.hoof-trimming-tec.com
info@hoof-trimming-tec.com



THE COBURN COMPANY, INC.

Quality agricultural supplies
and milking equipment
SINCE 1925.



Milking Equipment

Barn Equipment

Cleaning & Sanitizing

Calf Raising

Animal Health

Feeding & Watering

Animal Care

Fencing

Farm & Home

COBURN.COM



Visit us at **WORLD DAIRY EXPO** | EH 2801-2905 • EH 2703, 2704 • TC 825, 826

CLIPPER PARTS & REPAIR

IF IT CLIPS, WE CAN FIX IT!

AESCULAP



Authorized Aesculap
Distributor & Service Center.

andis



 Find us on
Facebook
Clipper Parts & Repair

Heiniger
quality + swiss made



Yes we have
**GROUND
DOWN
BLADES**

Oster

Visit us
at Booth
MC87

*Proud Sponsor of the
Youth Fitting
Contest*

**TIM SOLLMAN • 897 2-3/8 STREET • CLAYTON, WI
715-641-1057 • CLIPRFIX@AMERYTEL.NET**



booth 3007 to 3309

Come to our booth and visit your next mixer

ready to work as hard as you



www.supremeinternational.com

1-800-563-2038

Let's Get Social

Follow us on Twitter @SupremeMixer

Like our Facebook Page @SupremeInternationalLimited

Check out our photos and videos on Instagram @superinternationalLtd

-Notes-

-Notes-

FRESH, ALL-ROUND & K-BB!



COME SEE US AT WDE 2018
BOOTH AL 174B

OCONNORS POWERBALL LINDLEY VG86 - dam

Vogue Letsgo

VOGUE LETSGO ET TV TL TY CF - CA000012687225
APPLICABLE x POWERBALL P x N. UNO

GPFT +4.207 AND K-CASEIN BB WITH
OUTSTANDING TYPE & UDDER.
COMPLETE PATTERN WITH CORRECT
RUMP ANGLE, IDEAL LEGS SIDE VIEW
AND TEAT SIZE. HIGH GENOMICS BULL
BACKED BY COMESTAR LAURIE SHEIK
COW FAMILY. LETSGO DAM IS FULL
SISTER TO LABATT DAM .

GPFT	+4.207	IES €	+1173
MILK	+1240	K - CASEIN	BB
PR. %	+0,17	β - CASEIN	A1A2
FAT %	+0,22	TYPE	+3,12
LONGEVITY	120	UDDER	+4,27
GTPI	+2689	GLPI	+3410

At your side since 1974.

Intermizoo®

Why Showcase Selections?

Showcase Selections is so much more than just creating pretty cows for the show ring. It's about creating memories and it starts with a kid and a calf. For many of us in the dairy industry, some of our earliest memories are about that first show calf. The excitement, the work, the dedication, the anticipation; these are memories that last a lifetime. We have the Showcase Selections program because win, lose or draw, we hope to be part of that experience for the next kid and their calf.

Visit www.selectsires.com or talk to your Select Sires representative for a complete listing of our Showcase Selections sires.

™Showcase Selections is a trademark of Select Sires Inc. Photo by The Bullvine.



WHERE WINNING BEGINS!



YOUR SUCCESS *Our Passion.*

Phone: (614) 873-4683 ♦ www.selectsires.com